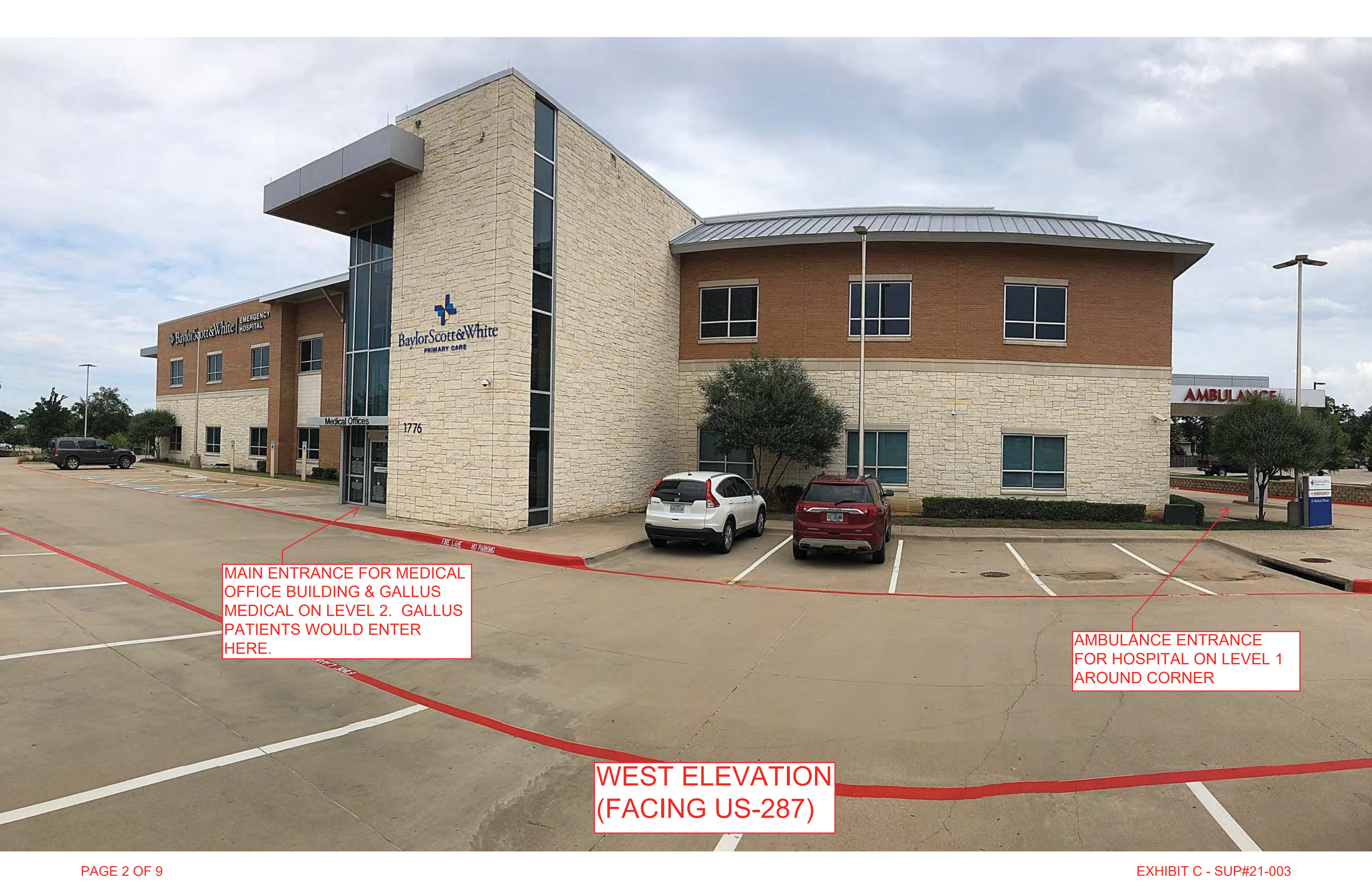




MAIN
ENTRANCE
FOR HOSPITAL
ON LEVEL 1
AROUND
CORNER.

MAIN ENTRANCE FOR MEDICAL
OFFICE BUILDING & GALLUS
MEDICAL ON LEVEL 2. GALLUS
PATIENTS WOULD ENTER
HERE.

WEST ELEVATION
(FACING US-287)



MAIN ENTRANCE FOR MEDICAL OFFICE BUILDING & GALLUS MEDICAL ON LEVEL 2. GALLUS PATIENTS WOULD ENTER HERE.

AMBULANCE ENTRANCE FOR HOSPITAL ON LEVEL 1 AROUND CORNER

WEST ELEVATION (FACING US-287)



AMBULANCE
ENTRANCE
FOR HOSPITAL
ON LEVEL 1

HOSPITAL
FIRE EXIT

SOUTH ELEVATION
(FACING RESTAURANT)



AMBULANCE
ENTRANCE

GENERATOR
ENCLOSURE
FOR HOSPITAL
ON LEVEL 1

STAFF ENTRANCE
FOR MOB/ GALLUS
MEDICAL ON LEVEL 2

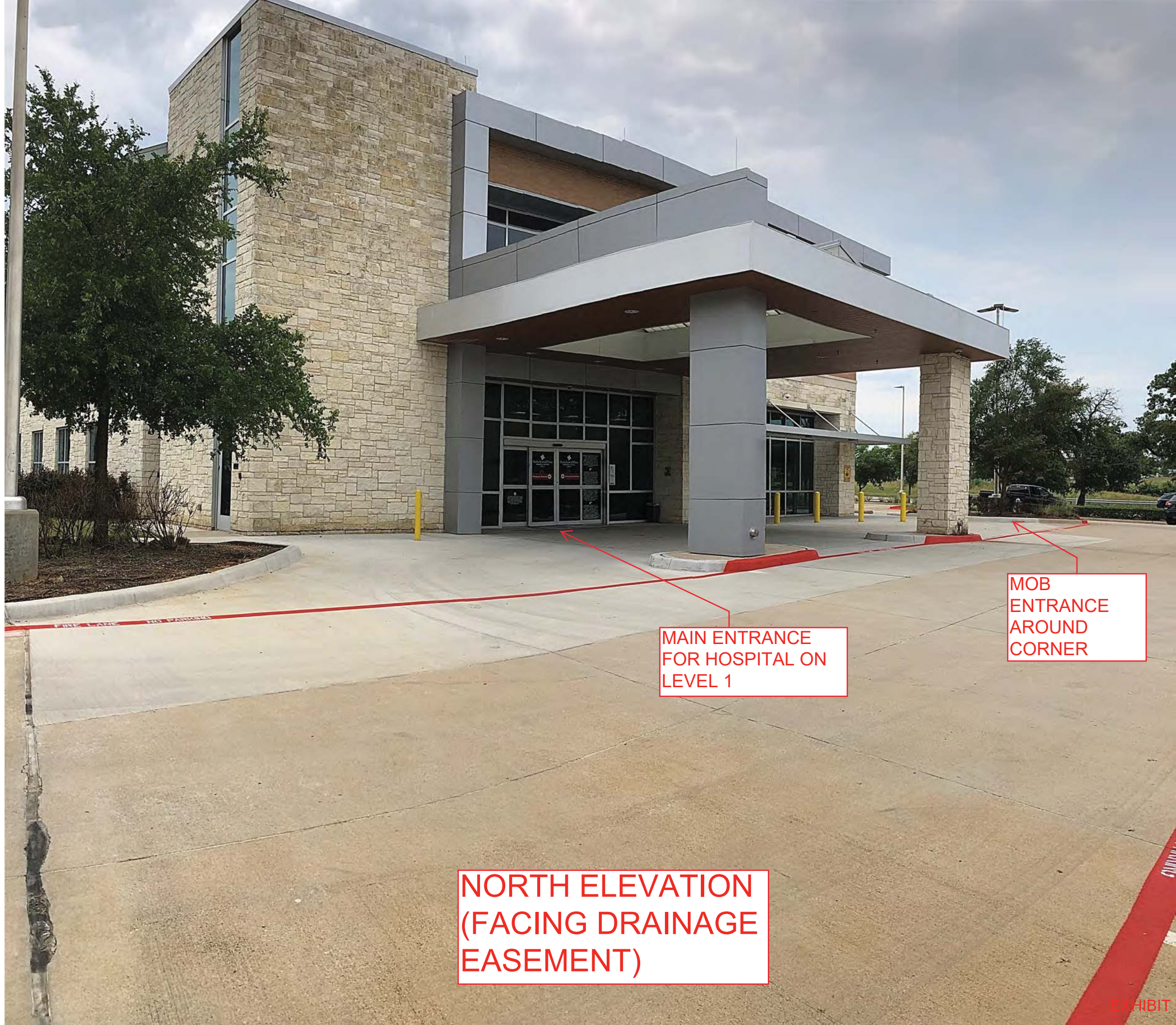
EAST ELEVATION
(FACING NEIGHBORHOOD)



ADJACENT RESTAURANT

STAFF ENTRANCE FOR MOB/ GALLUS MEDICAL ON LEVEL 2

EAST ELEVATION (FACING NEIGHBORHOOD)



MAIN ENTRANCE
FOR HOSPITAL ON
LEVEL 1

MOB
ENTRANCE
AROUND
CORNER

NORTH ELEVATION
(FACING DRAINAGE
EASEMENT)



MAIN
ENTRANCE TO
HOSPITAL ON
LEVEL 1

ENTRANCE FOR MOB/
GALLUS MEDICAL ON
LEVEL 2

NORTH ELEVATION
(FACING DRAINAGE
EASEMENT)



TRASH ENCLOSURE
NORTH ELEVATION



TRASH ENCLOSURE
EAST ELEVATION



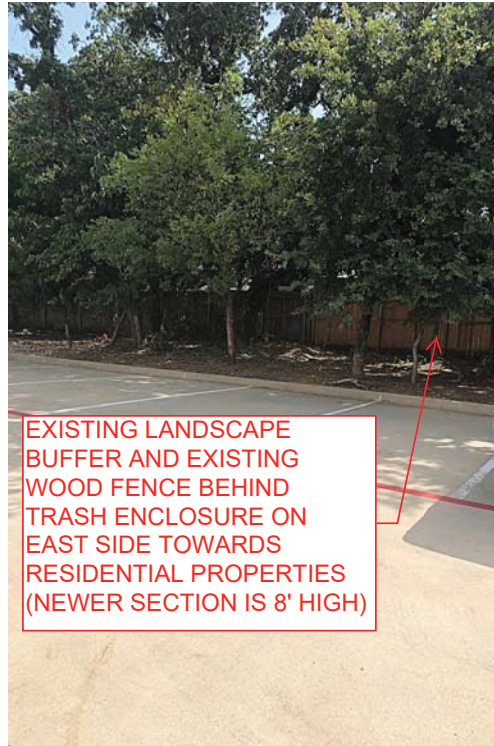
TRASH ENCLOSURE
WEST ELEVATION



TRASH ENCLOSURE
SOUTH ELEVATION



EXISTING
RETAINING
WALL AT
DRAINAGE
EASEMENT ON
NORTH SIDE



EXISTING LANDSCAPE
BUFFER AND EXISTING
WOOD FENCE BEHIND
TRASH ENCLOSURE ON
EAST SIDE TOWARDS
RESIDENTIAL PROPERTIES
(NEWER SECTION IS 8' HIGH)



EXISTING 20' LANDSCAPE
BUFFER AND EXISTING WOOD
FENCE (TYPICAL IS 6' HIGH) ON
EAST SIDE TOWARDS
RESIDENTIAL PROPERTIES



EXISTING
MONUMENT
SIGN ALONG
US-287 ON THE
WEST SIDE