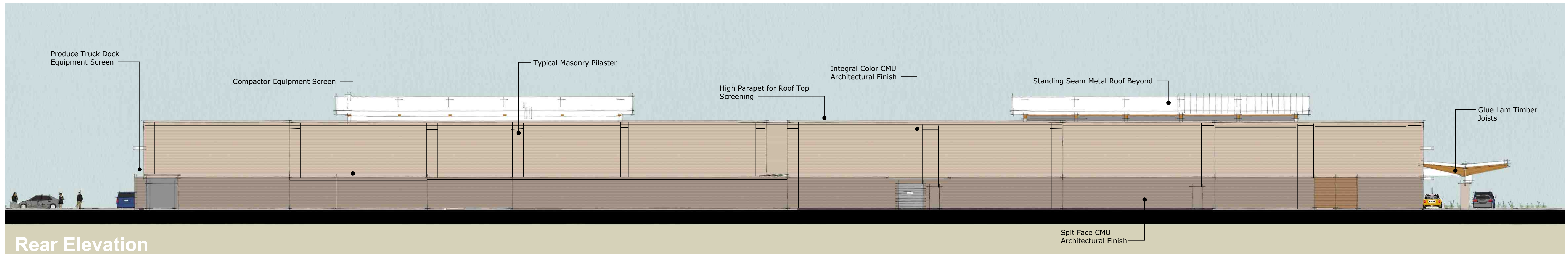


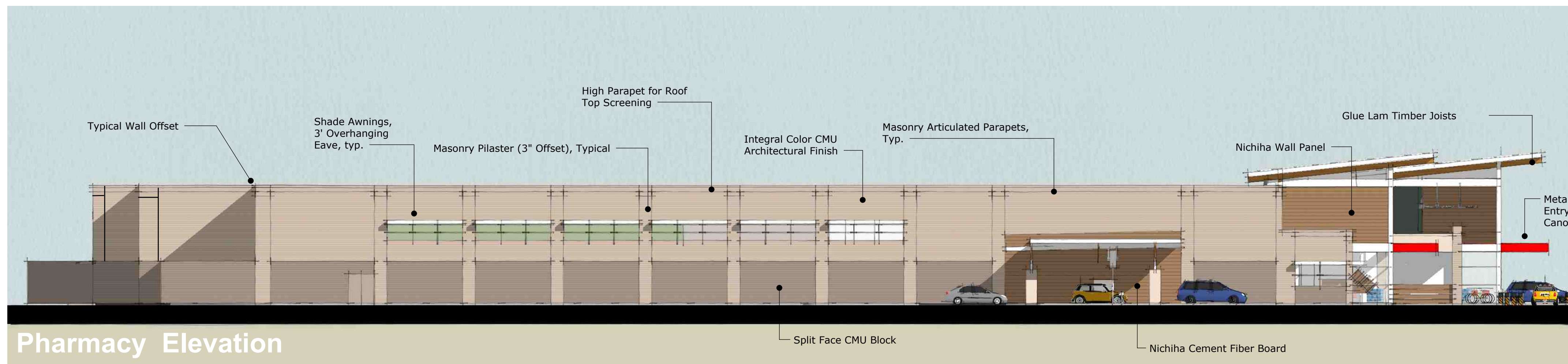
Produce Elevation

Material Calculations: 63% Architectural Integral Color CMU , 25% Architectural Split Face CMU, 1% Nicha Fiber Cement Board 1% Grey Glass



Rear Elevation

Material Calculations: 66% Architectural Integral Color CMU , 35% Architectural Split Face CMU,

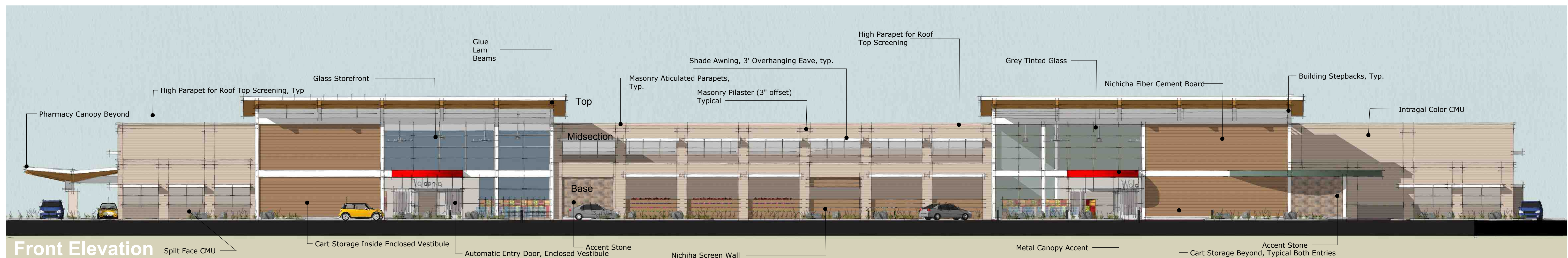


Pharmacy Elevation

Material Calculations: 63% Architectural Integral Color CMU , 25% Architectural Split Face CMU, 1% Nicha Fiber Cement Board 1% Grey Glass

Notes:

Masonry articulated parapets will be a 3 course running bond offset horizontally from the course below by 2 inches. Pilasters will be a 3 inch offset from the wall plane.



Front Elevation

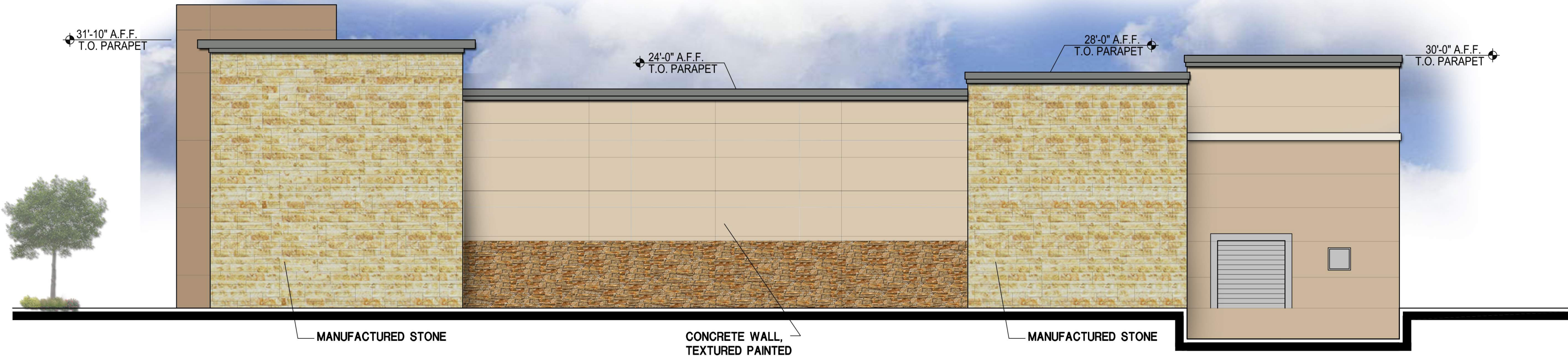
Material Calculations: 30% Architectural Integral Color CMU, 26% Grey Glass, 26% Architectural Split Face CMU, 17% Nichiha Fiber Cement Board, 1% Accent Stone



WEST ELEVATION



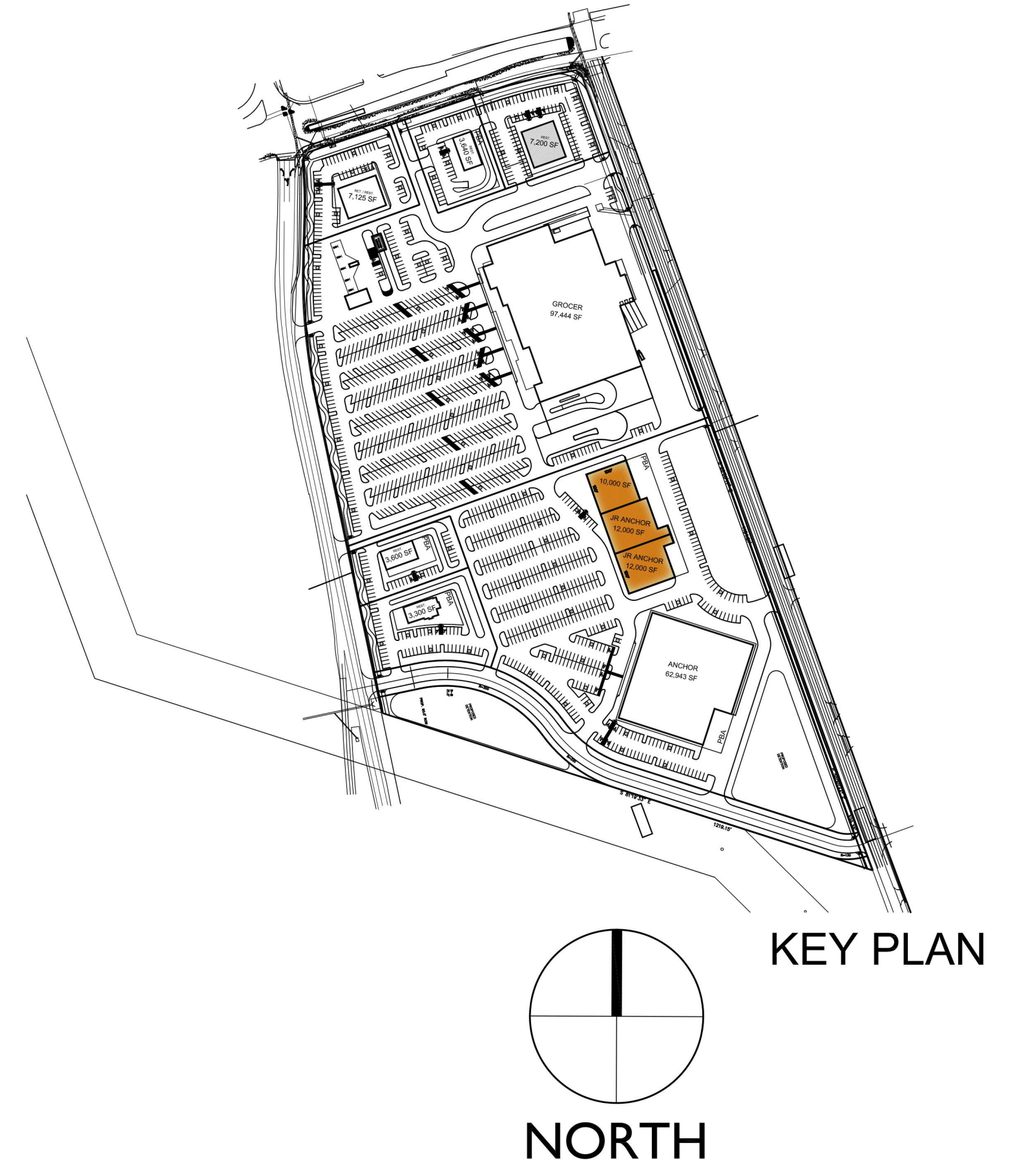
EAST ELEVATION



SOUTH ELEVATION



NORTH ELEVATION



US 287 & Broad St.

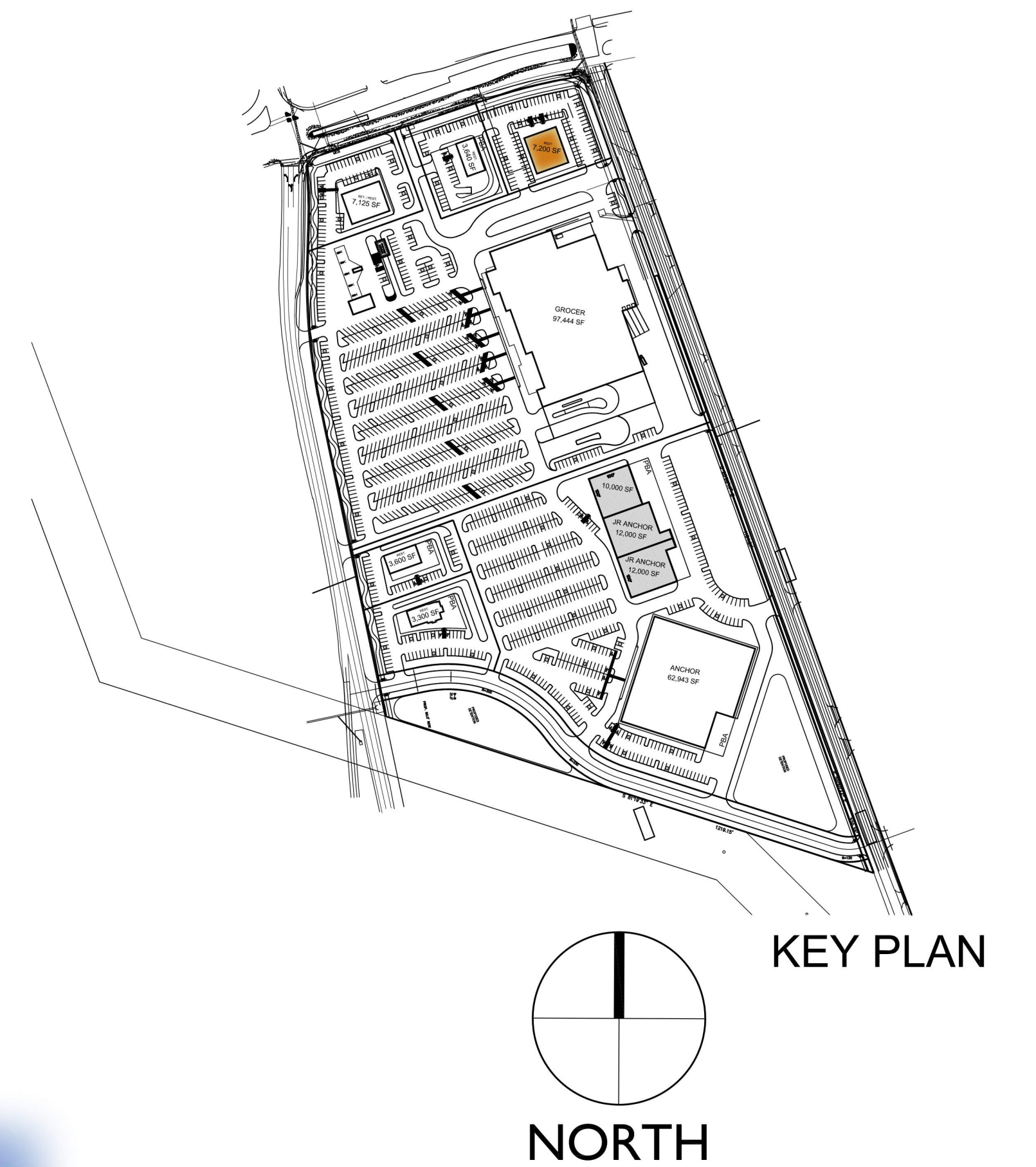
Mansfield, TX

EXAMPLE OF FUTURE BUILDING EXTERIOR FACADES

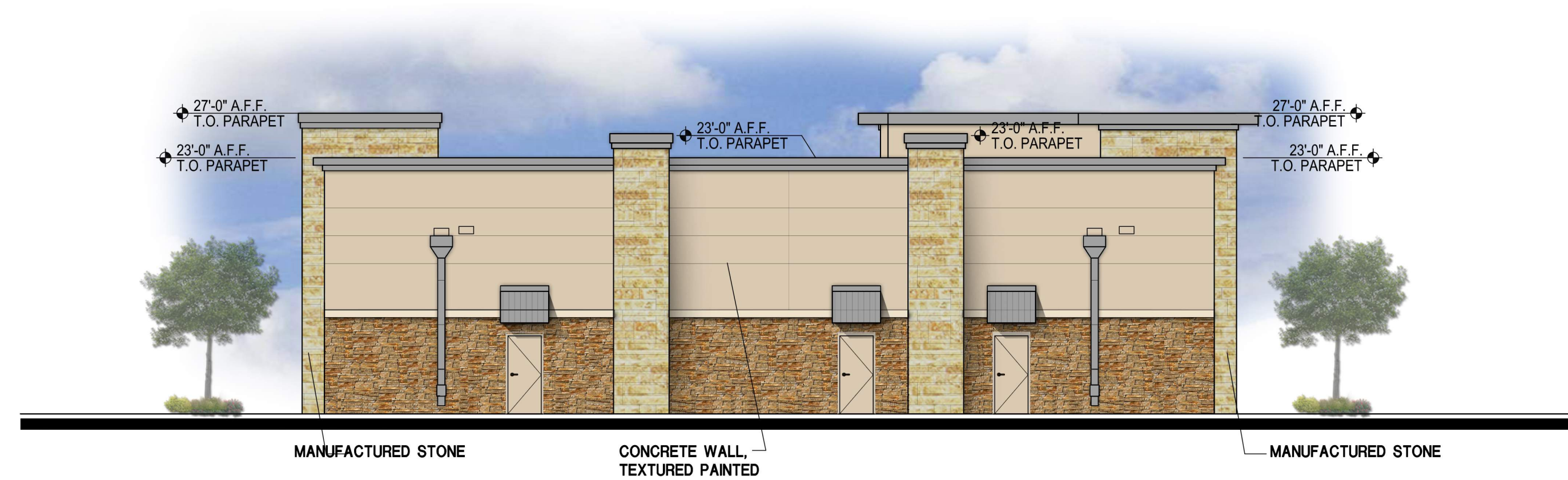
LPC

Date: 06.02.16 Scale 1/8" = 1'-0"





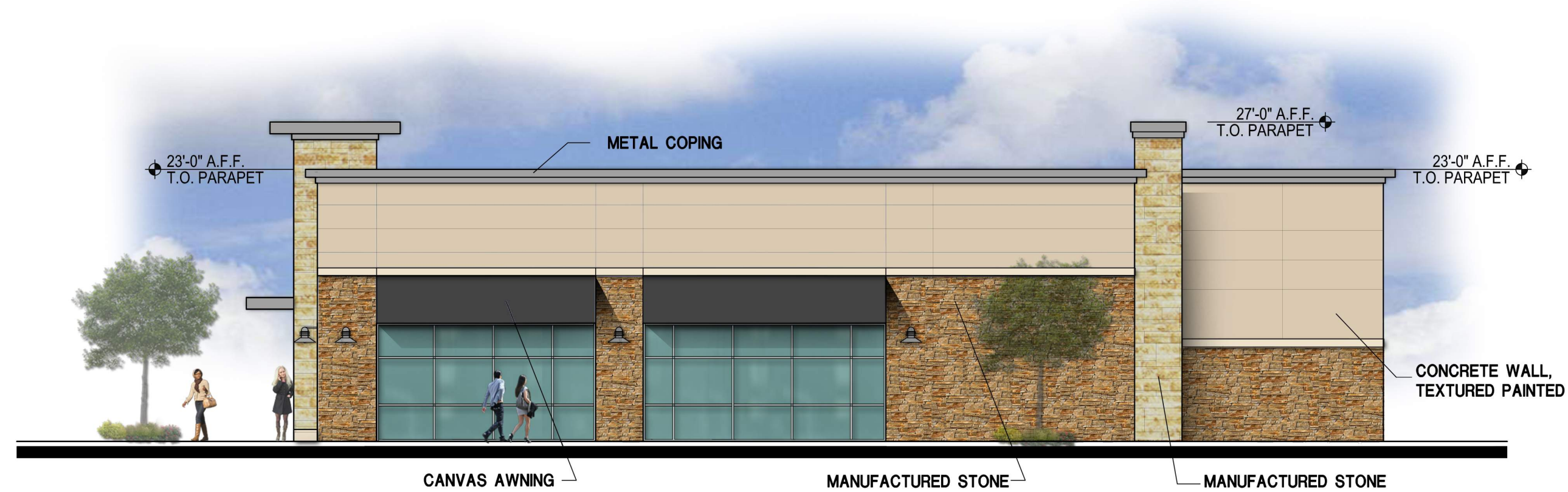
NORTH ELEVATION



SOUTH ELEVATION



EAST ELEVATION



WEST ELEVATION