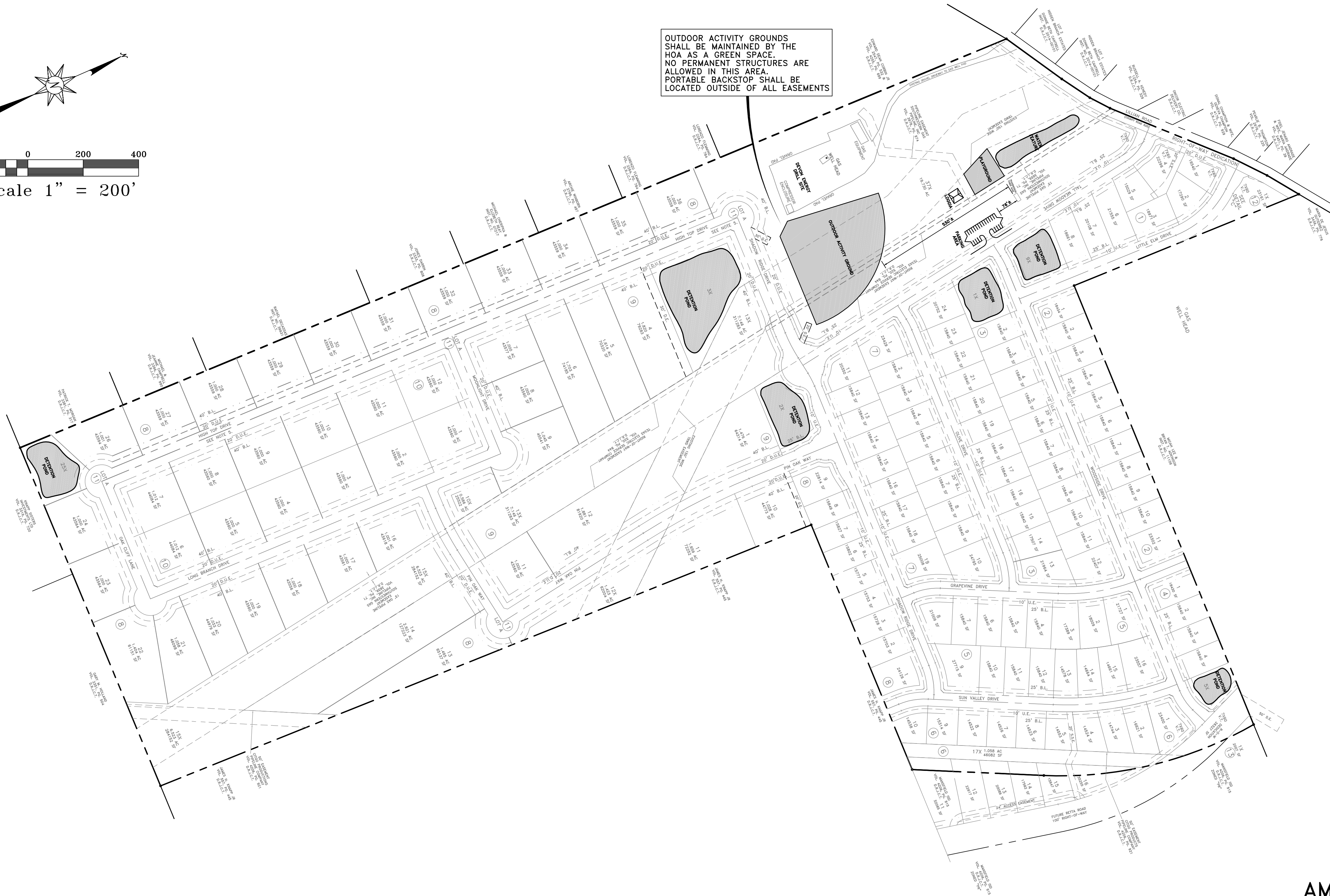


OUTDOOR ACTIVITY GROUNDS
SHALL BE MAINTAINED BY THE
HOA AS A GREEN SPACE.
NO PERMANENT STRUCTURES ARE
ALLOWED IN THIS AREA.
PORTABLE BACKSTOP SHALL BE
LOCATED OUTSIDE OF ALL EASEMENTS



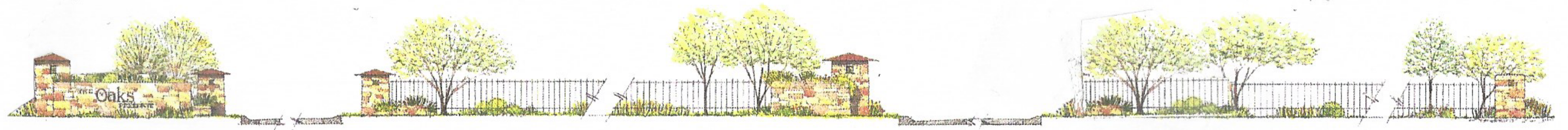
AMENITY CONCEPT PLAN
THE OAKS PRESERVE
MANSFIELD, JOHNSON COUNTY, TEXAS
MKP & ASSOCIATES
1375 GILMAN RD
FT WORTH, TX 76140
817-729-6511
03-13-17

SURVEYOR:
DFW
Geodesy
1108 SOUTH DOBSON STREET
BURLESON, TX 76008
817-447-4122

HCE **Hickman Consulting Engineers, Inc.**
3094 County Road 1024
Farmersville, Texas 75442
Ph (972)784-2499 * Fax (972)793-8654
Engineers Planners
F-12172

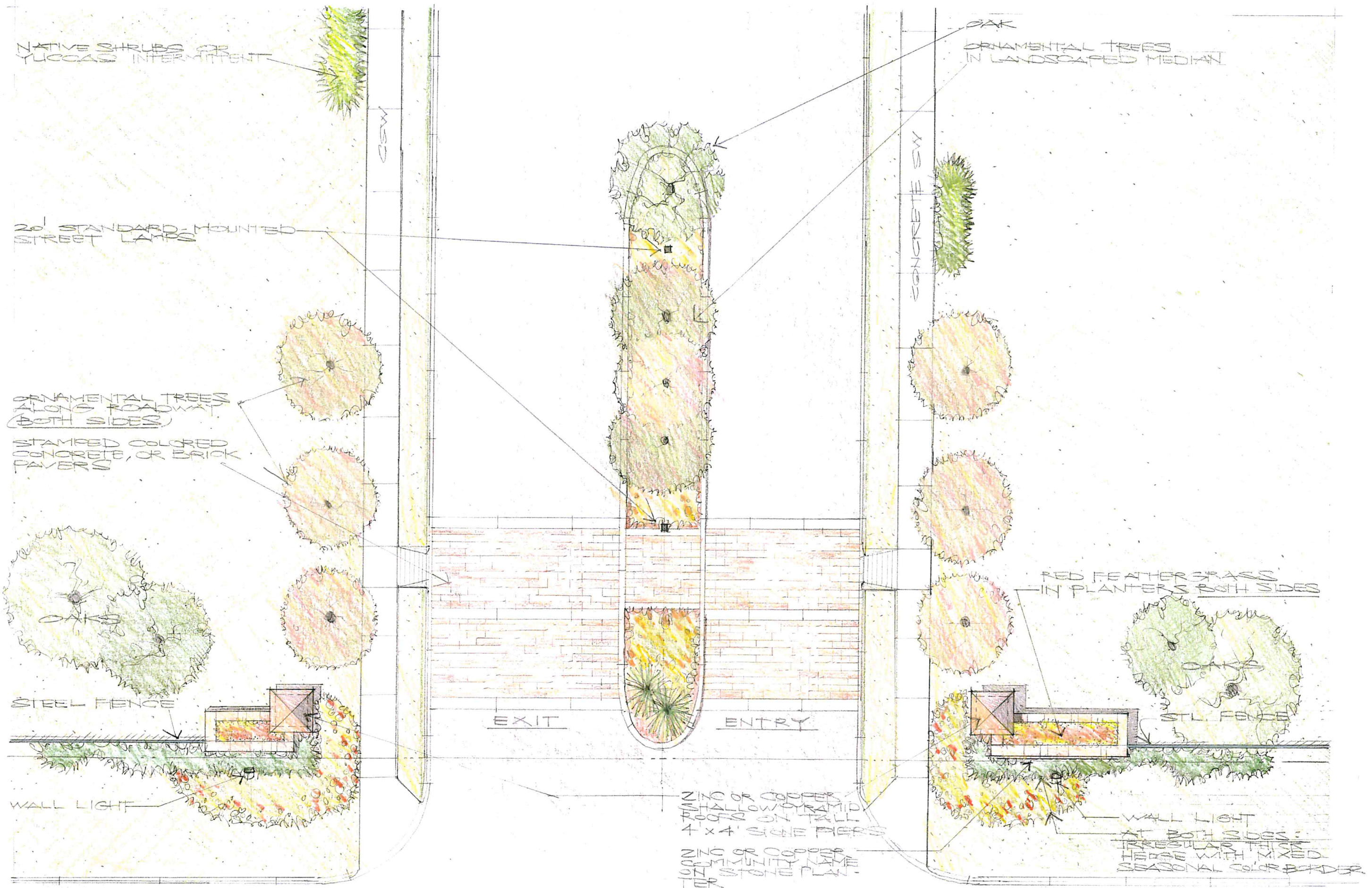
Approved by Council on May 8, 2017

APPROVED DEVELOPMENT PLAN



REVISED EXHIBIT D
PERIMETER WALL ALONG LILLIAN ROAD

Approved by Council on May 8, 2017



THE OAKS PRESERVE
MANSFIELD, 1/8" = 1'-0" TEXAS

EXHIBIT D



REVISED EXHIBIT E
PROPOSED OPEN SPACE AND AMENITIES

Approved by Council on May 8, 2017