



PLANT LIST				
Qty	Botanical Name	Common Name	Scheduled Size	Remarks
Trees				
7	Magnolia grandiflora	Southern Magnolia	3" Cal., 10' Hgt.	Full to ground
7	Quercus virginiana 'Sky Climber'	Live Oak	3" Cal., 12' Hgt.	B & B; single straight leader
3	Taxodium distichum	Bald Cypress	4" Cal., 14' Hgt.	B & B; single straight leader
10	Ulmus americana 'Princeton'	Princeton Elm	3" Cal., 14' Hgt.	B & B; single straight leader
9	Ulmus parvifolia 'Emer II'	Allee Elm	3" Cal., 14' Hgt.	B & B; single straight leader
11	Vitex agnus-castus	Chaste Tree	15G	Multi-trunk
Shrubs				
136	Ilex cornuta 'Needlepoint'	Needlepoint Holly	3 Gal.	
160	Leucophyllum frutescens 'Compacta'	Texas Sage	3 Gal.	
107	Loropetalum chinense 'Chang Nian Hong'	Ever Red Fringe Flower	3 Gal.	
277	Miscanthus sinensis 'Adagio'	Adagio Grass	3 Gal.	
12	Myrica cerifera	Southern Waxmyrtle	4" Hgt.	
141	Rhododendron 'Conled'	Autumn Coral Azalea	3 Gal.	
Groundcovers				
178	Liriope muscari 'Big Blue'	Big Blue Liriope	1 Gal.	Plant 18" O.C.
215	Rosa x 'Noalesa'	Flower Carpet Yellow Rose	3 Gal.	Plant 30" O.C.
88	Rudbeckia fulgida 'Goldsturm'	Black Eyed Susan	1 Gal.	Plant 24" O.C.
2	Trachelospermum jasminoides	Confederate Jasmine	3 Gal.	
Other				

LANDSCAPE REQUIREMENTS

A. SITE DENSITY

REQUIRED 1. Min 10% of site to be landscaped (cannot count parking lot internal or perimeter landscaping)
83,670 SF x 10% = 8,367 SF of landscape area

PROVIDED 1. Landscape area = 8,500 SF of landscape area

B. STREET FRONTAGE

REQUIRED 1. (1) tree per 40 LF of frontage
Debbie Ln: 259 LF / 40 LF = 6 street trees
Interior road: 328 LF / 40 LF = 8 street trees
2. 3 existing tree to be removed = 3 replacement trees

PROVIDED 1. 6 live oak = 6 street trees
4 elm, 1 live oak, 3 magnolia = 8 street trees
2. 3 bald cypress = 3 replacement trees

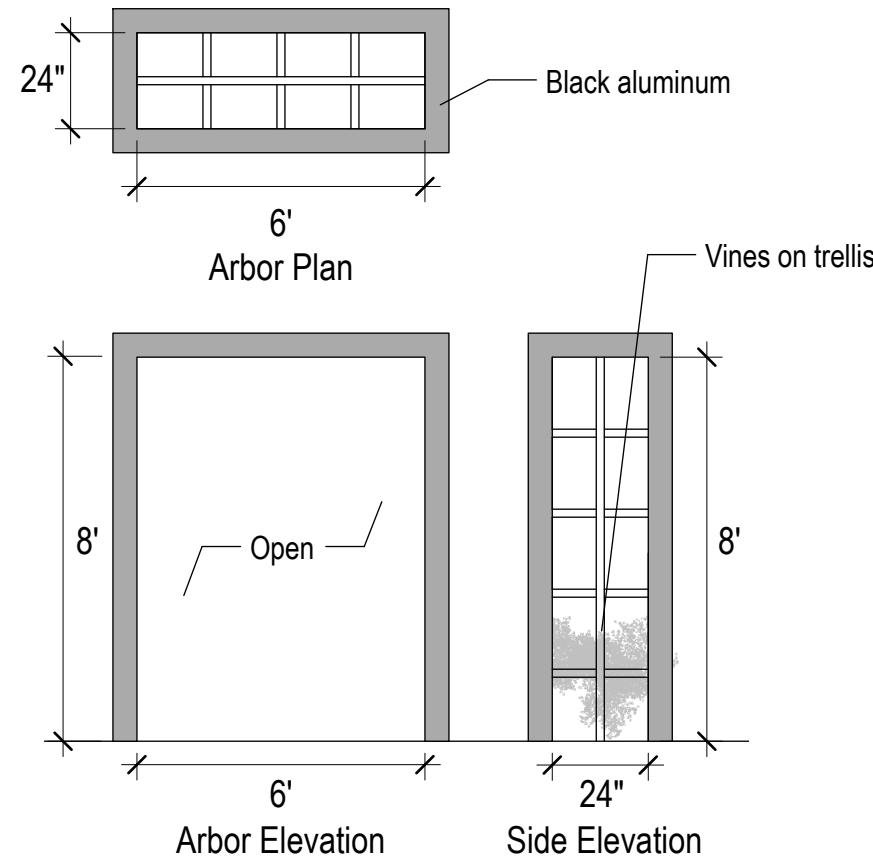
C. PARKING LOT

REQUIRED 1. Each island must contain at least (1) canopy tree
2. (1) tree per 10 parking spaces
70 spaces / 10 = 7 parking lot trees

PROVIDED 1. Each island contains at least (1) canopy tree
2. 7 Allee elm = 7 parking lot trees

LANDSCAPE NOTES

- SOUTHWEST**
- Landscape Contractor to read and understand the Landscape Specifications (sheet L-102) prior to finalizing bids. The Landscape Specifications shall be adhered to throughout the construction process.
 - Contractor is responsible for locating and protecting all underground utilities prior to digging.
 - Contractor is responsible for protecting existing trees from damage during construction.
 - All tree protection devices to be installed prior to the start of land disturbance, and maintained until final landscaping.
 - All tree protection areas to be protected from sedimentation.
 - All tree protection fencing to be inspected daily, and repaired or replaced as needed.
 - No parking, storage or other construction activities are to occur within tree protection areas.
 - All planting areas shall be cleaned of construction debris (ie. concrete, rock, rubble, building materials, etc) prior to adding and spreading of the topsoil.
 - General Contractor is responsible for adding a min of 4" clean friable topsoil in all planting beds and all grassed areas. Graded areas to be held down the appropriate elevation to account for topsoil depth. See Landscape Specifications for required topsoil characteristics.
 - In all parking lot islands, the Contractor is responsible to remove all debris, fracture/loosen subgrade to a min. 24" depth. Add topsoil to a 6"-8" berm height above island curbing; refer to landscape specifications and landscape island detail.
 - Prior to beginning work, the Landscape Contractor shall inspect the subgrade, general site conditions, verify elevations, utility locations, irrigation, approve topsoil provided by the General Contractor and observe the site conditions under which the work is to be done. Notify the General Contractor of any unsatisfactory conditions, work shall not proceed until such conditions have been corrected and are acceptable to the Landscape Contractor.
 - Any deviations from the approved set of plans are to be approved by the Landscape Architect.
 - Landscaping shall be installed in conformance with ANSI Z60.1 the "American Standard for Nursery Stock" and the accepted standards of the American Association of Nurserymen.
 - Existing grass in proposed planting areas shall be killed and removed. Hand rake to remove all rocks and debris larger than 1 inch in diameter, prior to adding topsoil and planting shrubs.
 - Soil to be tested to determine fertilizer and lime requirements prior to laying sod.
 - Annual and perennial beds: add min. 4 inch layer of organic material and till to a min. depth of 12 inches. Mulch annual and perennial beds with 2-3 inch depth of mini nuggets.
 - All shrubs beds (existing and new) to be mulched with a min. 3 inch layer of rock mulch.
 - Planting holes to be dug a minimum of twice the width of the root ball, for both shrub and tree. Set plant material 2-3" above finish grade. Backfill planting pit with topsoil and native excavated soil.
 - Sod to be delivered fresh (Cut less than 24 hours prior to arriving on site), laid immediately, rolled, and watered thoroughly immediately after planting. Edge of sod at planting beds are to be "V" trenched; see Landscape Details.
 - Any existing grass disturbed during construction to be fully removed, regraded and replaced. All tire marks and indentions to be repaired.
 - Water thoroughly twice in first 24 hours and apply mulch immediately.
 - The Landscape Contractor shall guarantee all plants installed for one full year from date of acceptance by the owner. All plants shall be alive and at a vigorous rate of growth at the end of the guarantee period. The Landscape Contractor shall not be responsible for acts of God or vandalism. See Landscape Specifications for Warranty requirements/expectations.
 - Any plant that is determined dead, in an unhealthy, unsightly condition, lost its shape due to dead branches, or other symptoms of poor, non-vigorous growth, shall be replaced by the Landscape Contractor. See Landscape Specifications for warranty requirements/expectations.
 - The Landscape Contractor shall guarantee all plants installed for one full year from date of acceptance by the owner. All plants shall be alive and at a vigorous rate of growth at the end of the guarantee period. The Landscape Contractor shall not be responsible for acts of God or vandalism. See Landscape Specifications for Warranty requirements/expectations.
 - Irrigation as-built shall be provided to the Landscape Architect within 24 hours of irrigation install completion.
 - Stake all evergreen and deciduous trees as shown in the planting detail and as per the Landscape Specifications.
 - Remove stakes and guying from all trees after one year from planting.



ARBOR DETAILS

SCALE: NTS



Chick-fil-A

Chick-fil-A
5200 Buffington Road
Atlanta, Georgia 30349-2998



770.442.8171 tel
770.442.1123 fax

Manley Land Design, Inc.
51 Old Canton Street
Alpharetta, Georgia 30009

manleylanddesign.com



CHICK-FIL-A
MANSFIELD FSU
1570 E DEBBIE LN
MANSFIELD, TX 76063

FSU# 04911

REVISION SCHEDULE
NO. DATE DESCRIPTION

MLD PROJECT # 2021187
PRINTED FOR PERMIT
DATE 11.30.21
DRAWN BY KCN

Information contained on this drawing and in all digital files produced for above named project may not be reproduced in any manner without express written or verbal consent from authorized project representatives.

PERMIT
Landscape Plan

SHEET NUMBER
L-100

SUP#21-007

Landscape Architect
Aaron Neitzke
aneitzke@manleylanddesign.com