

1 ELEVATION - FRONT (FACING WEST)

| | | |
|----------------------------|--------|--------|
| LT SANDSTONE BRICK VENEER: | 189 SF | (50%) |
| STOREFRONT / GLAZING: | 43 SF | (12%) |
| IVORY BRICK VENEER: | 51 SF | (14%) |
| STONE WATERTABLE: | 91 SF | (24%) |
| TOTAL: | 374 SF | (100%) |

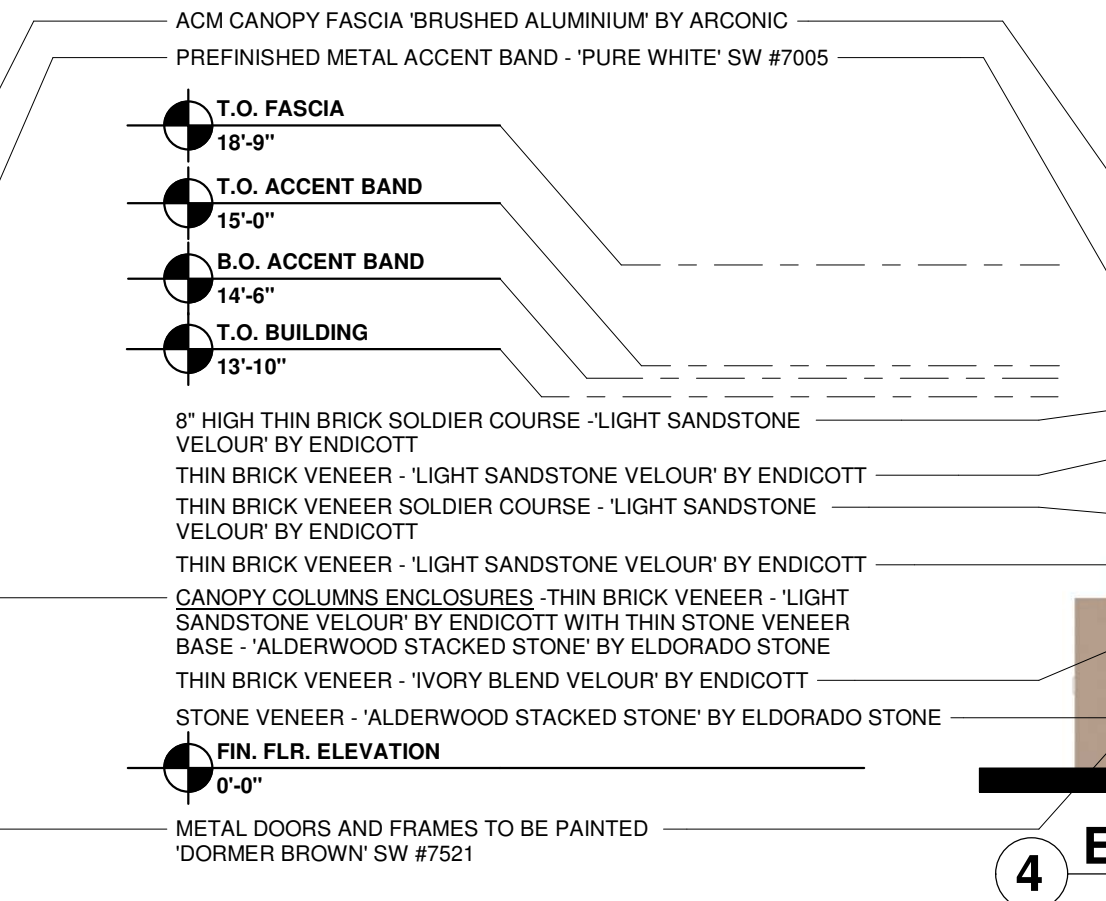
2 ELEVATION - RIGHT (FACING SOUTH)

| | | |
|----------------------------|--------|--------|
| LT SANDSTONE BRICK VENEER: | 280 SF | (40%) |
| STOREFRONT / GLAZING: | 98 SF | (14%) |
| IVORY BRICK VENEER: | 88 SF | (13%) |
| STONE WATERTABLE: | 112 SF | (16%) |
| ACM / METAL FASCIA: | 124 SF | (17%) |
| TOTAL: | 706 SF | (100%) |



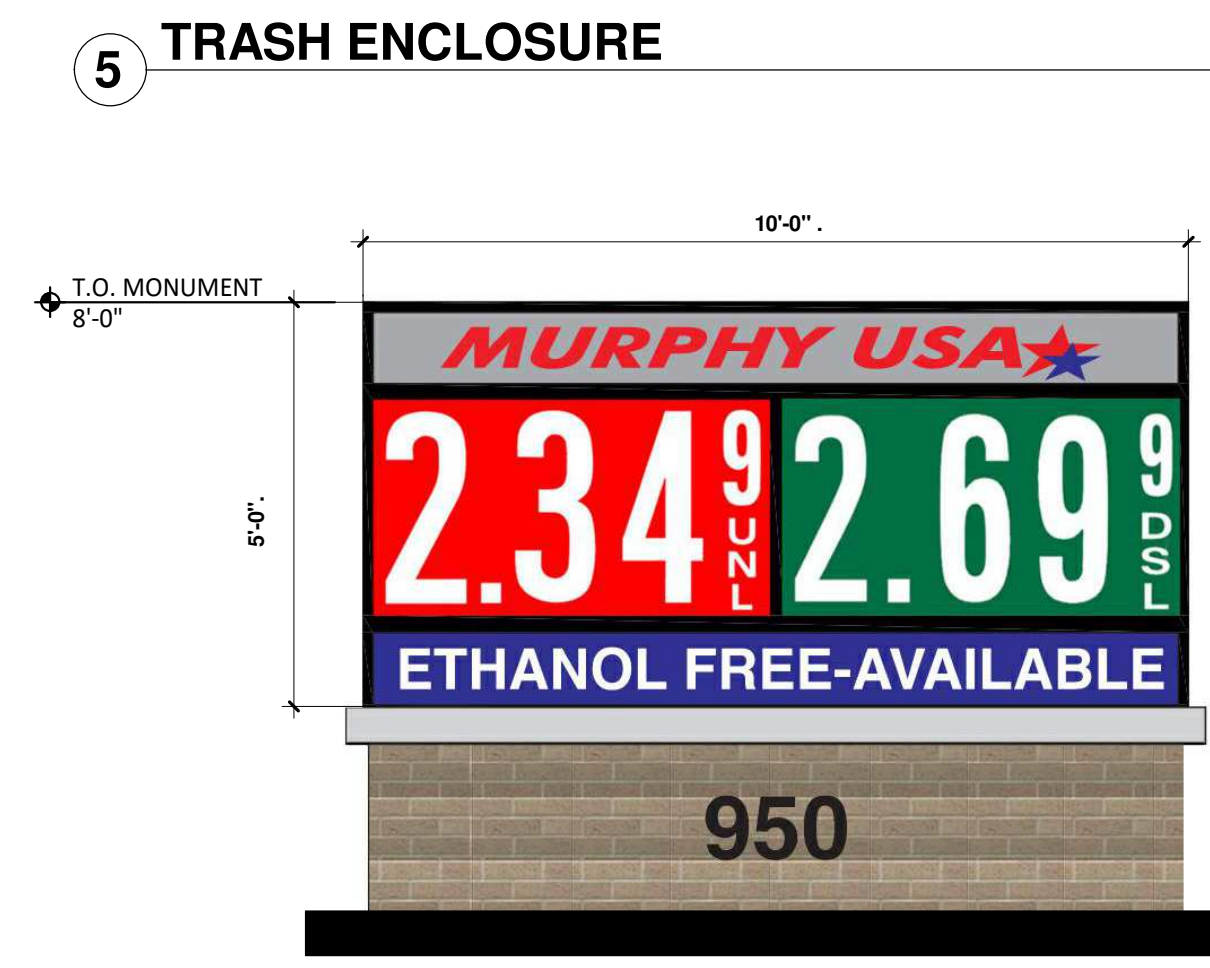
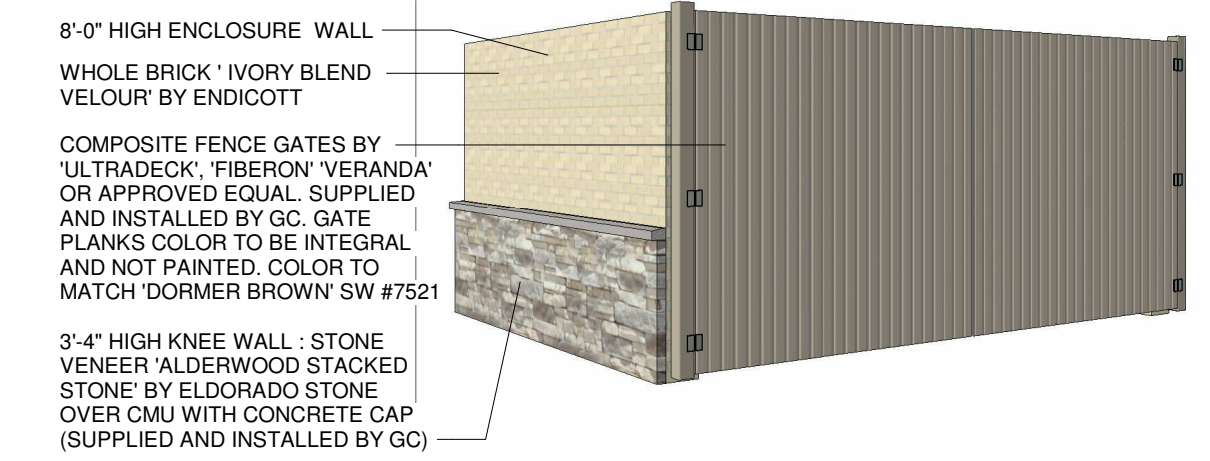
3 ELEVATION - REAR (FACING EAST)

| | | |
|----------------------------|--------|--------|
| LT SANDSTONE BRICK VENEER: | 211 SF | (56%) |
| IVORY BRICK VENEER: | 72 SF | (20%) |
| STONE WATERTABLE: | 91 SF | (24%) |
| TOTAL: | 374 SF | (100%) |



4 ELEVATION - LEFT (FACING NORTH)

| | | |
|----------------------------|--------|--------|
| LT SANDSTONE BRICK VENEER: | 280 SF | (40%) |
| STOREFRONT / GLAZING: | 98 SF | (14%) |
| IVORY BRICK VENEER: | 88 SF | (13%) |
| STONE WATERTABLE: | 112 SF | (16%) |
| ACM / METAL FASCIA: | 124 SF | (17%) |
| TOTAL: | 706 SF | (100%) |



SIGNAGE COLOR CHART

CANOPY - ROUTED SIGNS FURNISHED AND INSTALLED BY FMS

| | | |
|------------|-------|---|
| MURPHY USA | BLUE | EASTMAN BLUE, PANTONE 287 BLUE, 3M 3630-87 ROYAL BLUE |
| STAR LOGO | RED | PROGRAM RED, PANTONE 485 RED, 3M 3630-43 RED |
| | WHITE | EASTMAN WHITE |

CANOPY - PRICE SIGNS FURNISHED AND INSTALLED BY THE SIGN VENDOR

| | | |
|----------|---------|-------------|
| UNLEADED | RED | 3M 3632-73 |
| | WHITE | 3M 3632-20 |
| | DIGIT | RED/WHITE |
| | CABINET | BLACK |
| DIESEL | GREEN | 3M 3632-26 |
| | WHITE | 3M 3632-20 |
| | DIGIT | GREEN/WHITE |
| | CABINET | BLACK |

MONUMENT - PRICE SIGNS FURNISHED AND INSTALLED BY THE SIGN VENDOR

| | | |
|--------------|---------|-------------|
| MURPHY USA | BLUE | 3M 3632-157 |
| STAR LOGO | RED | 3M 3632-43 |
| | SILVER | 3M 3630-121 |
| | CABINET | BLACK |
| UNLEADED | RED | 3M 3632-73 |
| | WHITE | 3M 3632-20 |
| | DIGIT | RED/WHITE |
| | CABINET | BLACK |
| DIESEL | GREEN | 3M 3632-26 |
| | WHITE | 3M 3632-20 |
| | DIGIT | GREEN/WHITE |
| | CABINET | BLACK |
| ETHANOL FREE | BLUE | 3M 3632-157 |
| | WHITE | 3M 3632-20 |
| | DIGIT | BLUE/WHITE |
| | CABINET | BLACK |

| CANOPY SIGNS : | QTY. | HEIGHT | WIDTH | AREA S.F. | TOTAL S.F. |
|---|------|--------|--------------|-----------|------------|
| MURPHY USA CANOPY LOGO SIGN | 2 | | GRAPHIC AREA | 24.76 | 49.52 |
| LARGE CANOPY PRICE SIGN | 4 | 51.25" | 118.00" | 42.00 | 168.00 |
| SMALL CANOPY PRICE SIGN | 4 | 34.13" | 74.00" | 17.54 | 70.16 |
| CANOPY SIGNS TOTAL SIGNAGE : 287.68 S.F. | | | | | |
| MONUMENT SIGN: | | | | | |
| UNLEADED W/LOGO | 1 | 60.00" | 120.00" | 50.00 | 50.00 |
| MONUMENT SIGNS TOTAL SIGNAGE : 50.00 S.F. | | | | | |
| TOTAL SIGN AREA : 337.68 S.F. | | | | | |



MANSFIELD, TX (950 NORTH WALNUT CREEK DRIVE) R01
 MURPHY #5753 WM #284
 DECEMBER 02, 2024