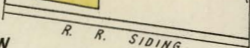
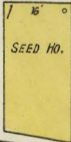


H&T.C. (S.P.) R.R.

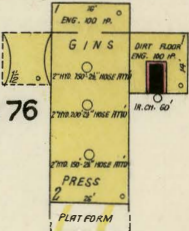
H&T.C. PUMP HO.



MANSFIELD GIN



NO WATCHMAN, POWER: STEAM & OIL
ENG.-NO HEAT.-LIGHTS: ELEC.-FUEL:
COAL & OIL.-HYDS & HOSE AS SHOWN
16" PERFORATED W.P. IN COTTON HO.-
BBLS, PAULS & HAND EXT'RS DISTRIB'D
THRO'OUT.-MACHINERY: 5 MUNGER, 80
SAW GINS & S PRATT, 70 SAW GINS-
1 DOUBLE SQ. BALE PRESS.-



76



NO EXPOSURE ANY SIDE