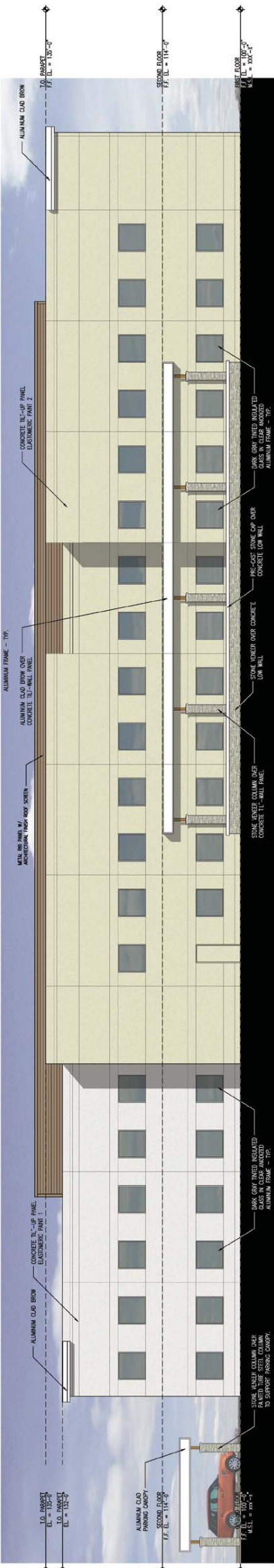
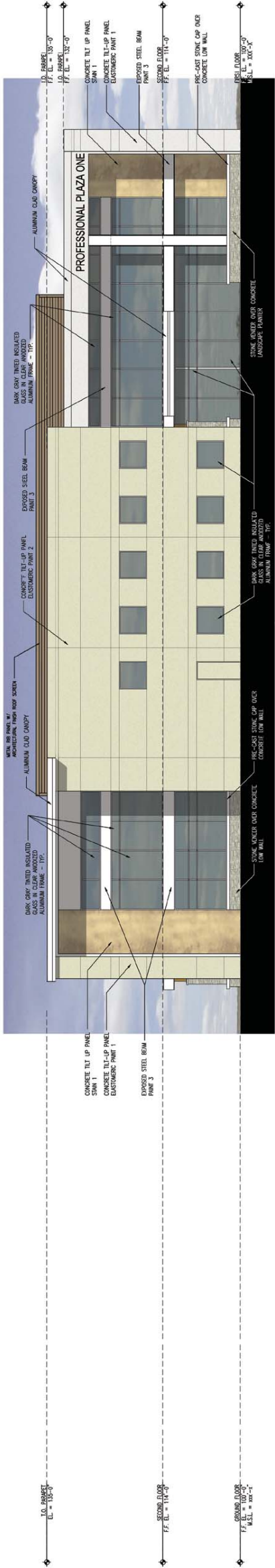


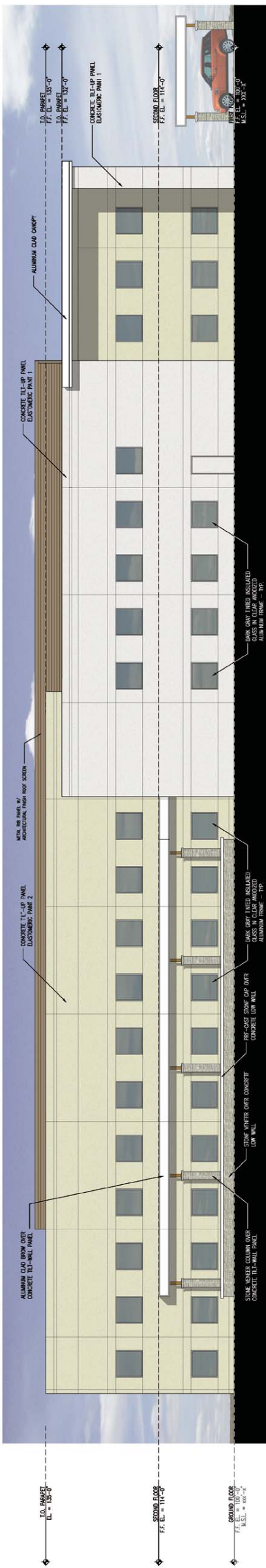
NORTH ELEVATION



WEST ELEVATION



SOUTH ELEVATION

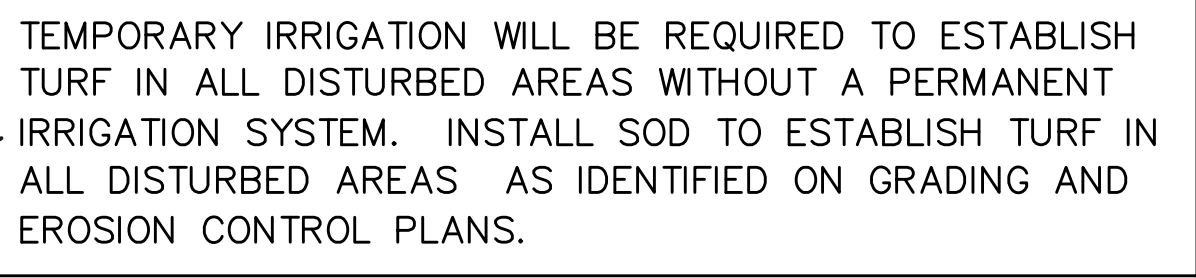


EAST ELEVATION



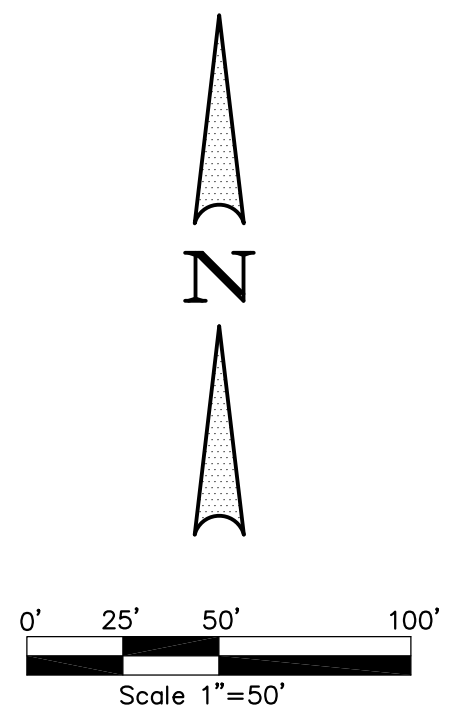
MANSFIELD MEDICAL PLAZA



MANSFIELD, TX



- DFL Group, LLC**
PARKS + OPEN SPACE PLANNING • LANDSCAPE ARCHITECTURE
8233B MID CITIES BLVD, NORTH RICHLAND HILLS, TX 76180 817-479-0730

THIS ELECTRONIC DRAWING FILE IS RELEASED UNDER THE AUTHORITY OF JOHN R. FAIN, LANDSCAPE ARCHITECT REGISTRATION NUMBER B001 ON 05/05/10. WHO MAKES THIS ORIGINAL FILE. THIS ELECTRONIC DRAWING FILE MAY BE USED AS A BACKGROUND DRAWING, PURSUANT TO RULE 3.030(F) OF THE RULES AND REGULATIONS OF THE TEXAS BOARD OF ARCHITECTURAL EXAMINERS. THE RELEASE OF THIS ELECTRONIC DRAWING FILE DOES NOT ASSUME RESPONSIBILITY FOR ANY MODIFICATION TO OR USE OF THIS DRAWING FILE THAT IS INCONSISTENT WITH THE REQUIREMENTS OF THE RULES AND REGULATIONS OF THE TEXAS BOARD OF ARCHITECTURAL EXAMINERS. NO PERSON MAY MAKE MODIFICATIONS TO THIS ELECTRONIC DRAWING FILE WITHOUT THE LANDSCAPE ARCHITECT'S EXPRESS WRITTEN PERMISSION.



<div><div><div>10</div><div>ORIGINAL QUANT JURAL PEN- ENT</div></div><div></div></div>	SHEET 1 OF 2		<div>Scale: 1"=50'</div> <div>Date: 02/23/2010</div> <div>File: 54805im.dwg</div> <div>Project No.: 54805.00</div>	LANDSCAPE PLAN BROAD STREET MEDICAL MANSFIELD, TEXAS		RICHARD BRATTON SURVEY, ABSTRACT NO. 114 CITY OF MANSFIELD, TARRANT COUNTY, TEXAS		<div>Winkelmann & Associates, Inc.</div> <div>CONSULTING CIVIL ENGINEERS • SURVEYORS 6250 WILDCREST PASADENA, SUITE 220 PASADENA, TEXAS 77502 (972) 466-7099 FAX Texas Engineers Registration No. 89 Expires 02/31/2010 Copyright © 2010, Winkelmann & Associates, Inc.</div>	No.		DATE	REVISION		APPROV.