

EXHIBIT "A"
LEGAL DESCRIPTION
PERMANENT ONCOR ELECTRIC DELIVERY COMPANY EASEMENT

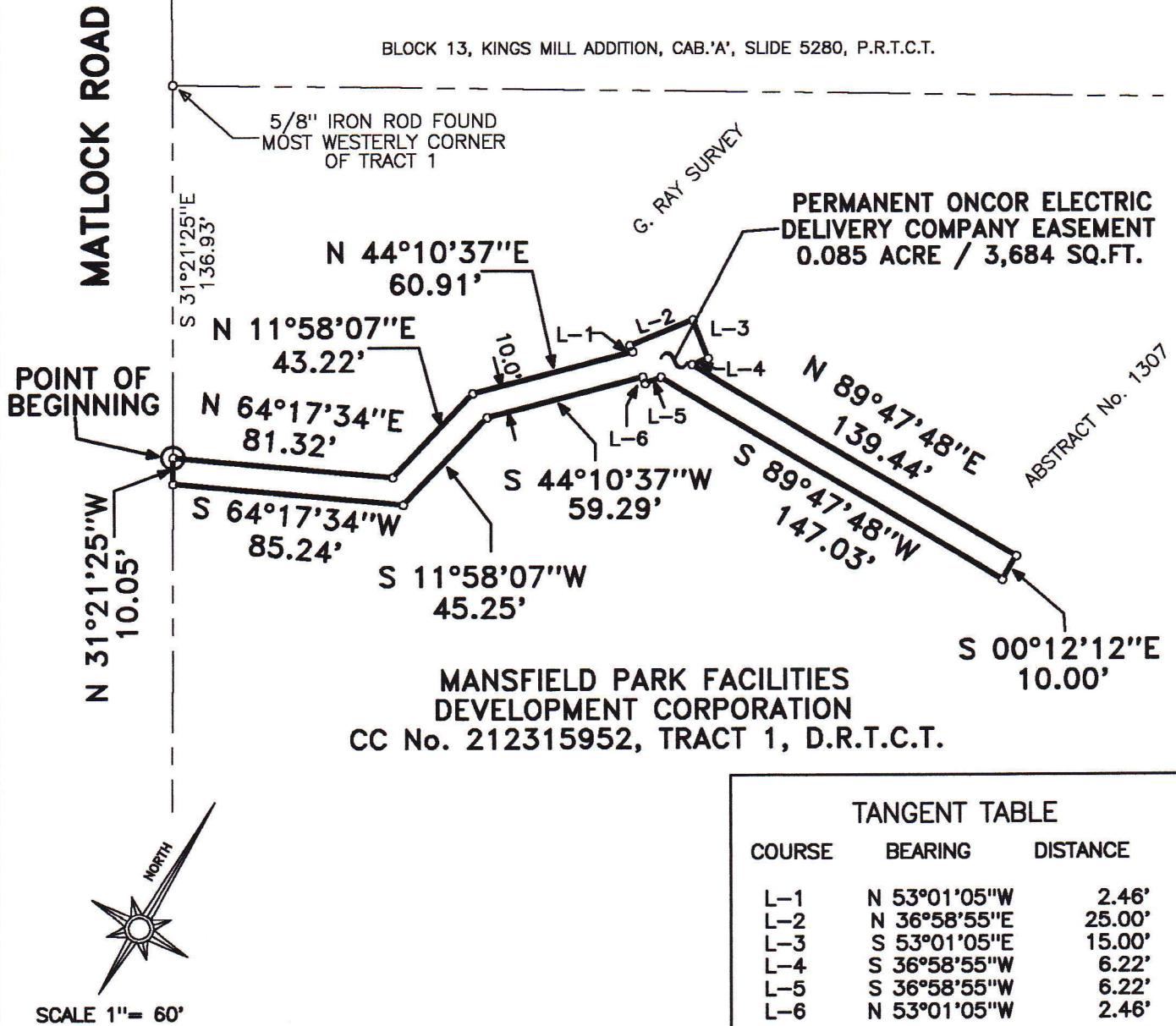
BEING 0.085 acre of land located in the G. RAY SURVEY, Abstract No. 1307 , and being a portion of a tract of land designated as Tract 1, in the deed to Mansfield Park Facilities Development Corporation recorded in County Clerk's File No. 212315952 of the Deed Records of Tarrant County, Texas. Said 0.085 acre of land being more particularly described by metes and bounds as follows:

BEGINNING at a point in the Northwest boundary line of said Tract 1, lying S 31° 21' 25" W 136.93 feet, from a 5/8" iron rod found, marking the most Westerly corner of said Tract 1, and said POINT OF BEGINNING also lying in the Southeast right-of-way line of Matlock Road;

THENCE	N 64° 17' 34" E	81.32 feet, to a point;
THENCE	N 11° 58' 07" E	43.22 feet, to a point;
THENCE	N 44° 10' 37" E	60.91 feet, to a point;
THENCE	N 53° 01' 05" W	2.46 feet, to a point;
THENCE	N 36° 58' 55" E	25.00 feet, to a point;
THENCE	S 53° 01' 05" E	15.00 feet, to a point;
THENCE	S 36° 58' 55" W	6.22 feet, to a point;
THENCE	N 89° 47' 48" E	139.44 feet, to a point;
THENCE	S 00° 12' 12" E	10.00 feet, to a point;
THENCE	S 89° 47' 48" W	147.03 feet, to a point;
THENCE	S 36° 58' 55" W	6.22 feet, to a point;
THENCE	N 53° 01' 05" W	2.46 feet, to a point;
THENCE	S 44° 10' 37" W	59.29 feet, to a point;
THENCE	S 11° 58' 07" W	45.25 feet, to a point;
THENCE	S 64° 17' 34" W	85.24 feet, to a point in the Northwest boundary line of said Tract 1, and being the Southeast right-of-way line of said Matlock Road;
THENCE	N 31° 21' 25" W	10.05 feet, along the Northwest boundary line of said Tract 1, and the Southeast right-of-way line of said Matlock Road to the POINT OF BEGINNING containing 0.085 acre (3,684 square feet) of land.

EXHIBIT "A"

BLOCK 13, KINGS MILL ADDITION, CAB.'A', SLIDE 5280, P.R.T.C.T.



MANSFIELD PARK FACILITIES
DEVELOPMENT CORPORATION
1200 E. Broad Street
Mansfield, Texas, 75063

Oncor Electric Delivery Company, LLC
1601 Bryan Street
Dallas, Texas, 75201

ONCOR ELECTRIC DELIVERY COMPANY EASEMENT

BRITTAIN & CRAWFORD
LAND SURVEYING &
TOPOGRAPHIC MAPPING
(817) 926-0211 - METRO (817) 429-5112
FAX No. (817) 926-9347
P.O. BOX 11374 * 3908 SOUTH FREEWAY
FORT WORTH, TEXAS 76110
EMAIL: admin@brittain-crawford.com

ONCOR ELECTRIC DELIVERY COMPANY EASEMENT

0.085 ACRE OF LAND
LOCATED IN THE
G. RAY SURVEY
ABSTRACT No. 1307
MANSFIELD, TARRANT COUNTY, TEXAS



SEPTEMBER 6, 2013