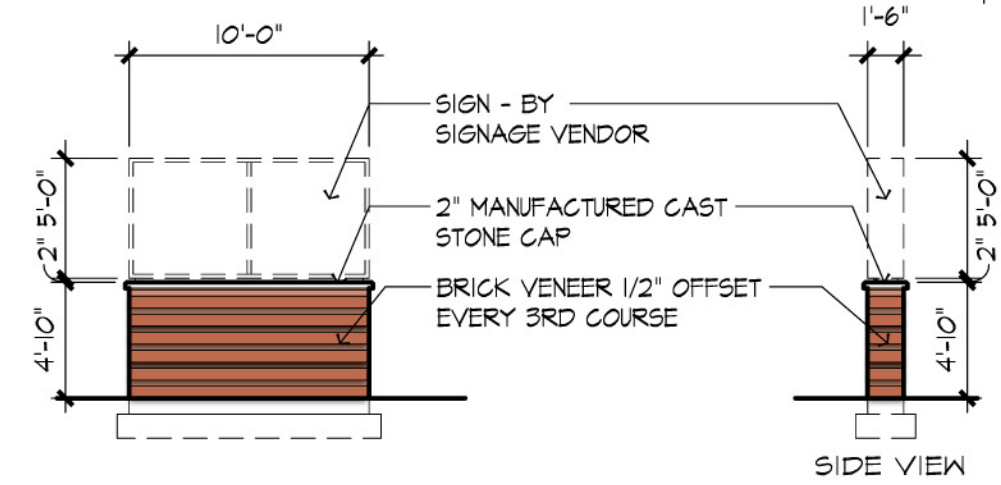
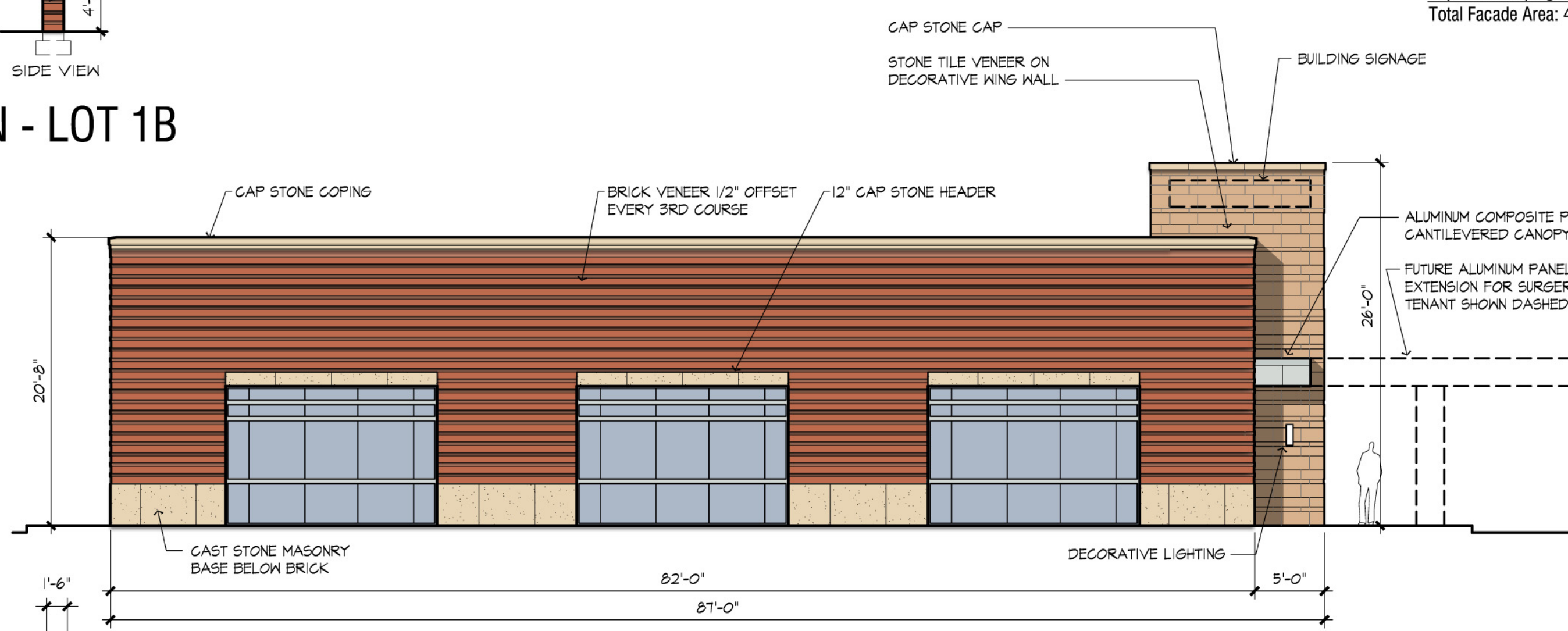


01 SOUTH ELEVATION - FRONT FACADE
A3.01 SCALE: 1/8" = 1'-0"

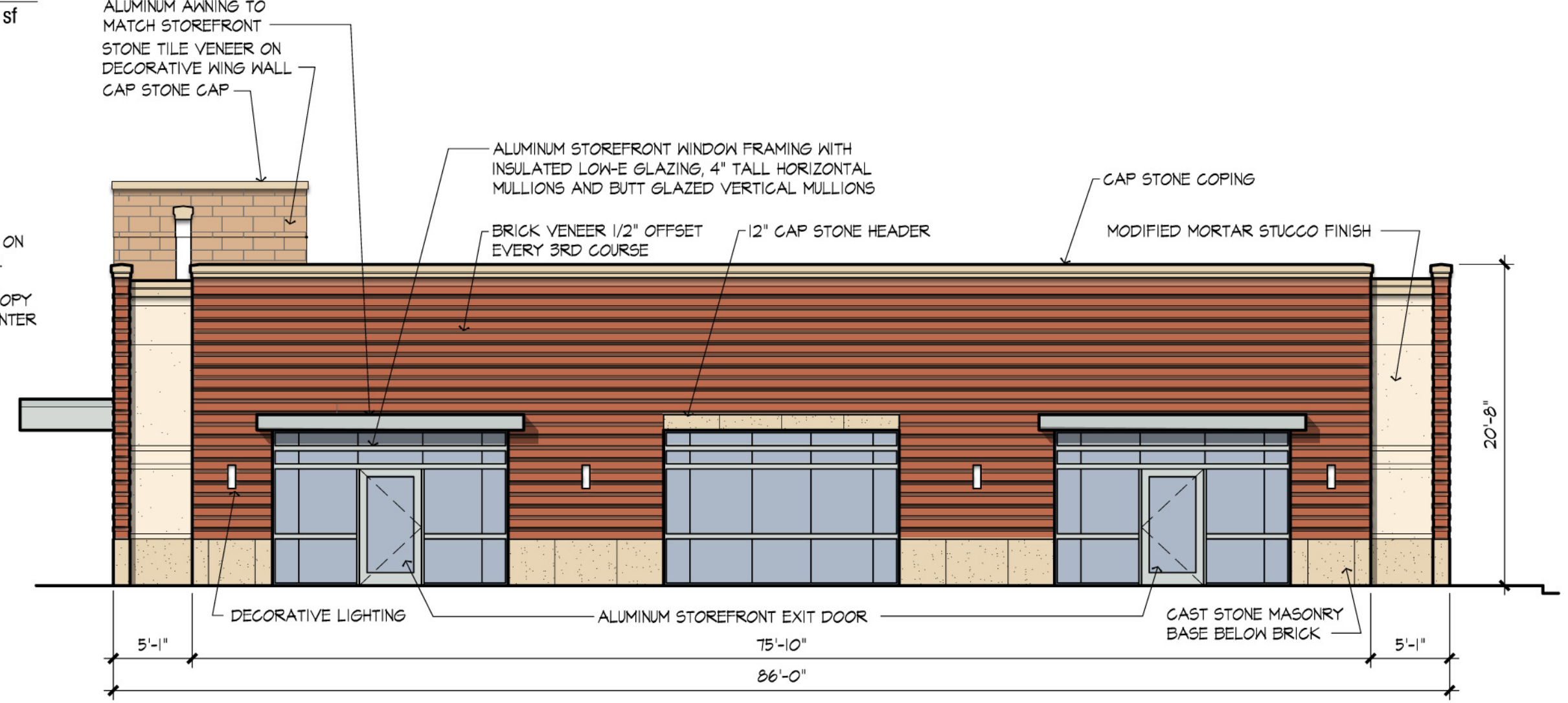
South Elevation Calculations
Brick Area/Percentage: 1,162 sf / 27%
Stucco Area/Percentage: 1,322 sf / 31%
Glazing Area/Percentage: 1,381 sf / 32%
Stone Tile Veneer Area/Percentage: 51 sf / 1%
Cast Stone Area/Percentage: 131 sf / 3%
Aluminum Canopy/Awning Area: 180 sf
Cap Stone Coping Area: 97 sf
Total Facade Area: 4,324 sf



06 MONUMENT SIGN - LOT 1B
A3.01 SCALE: 1/8" = 1'-0"

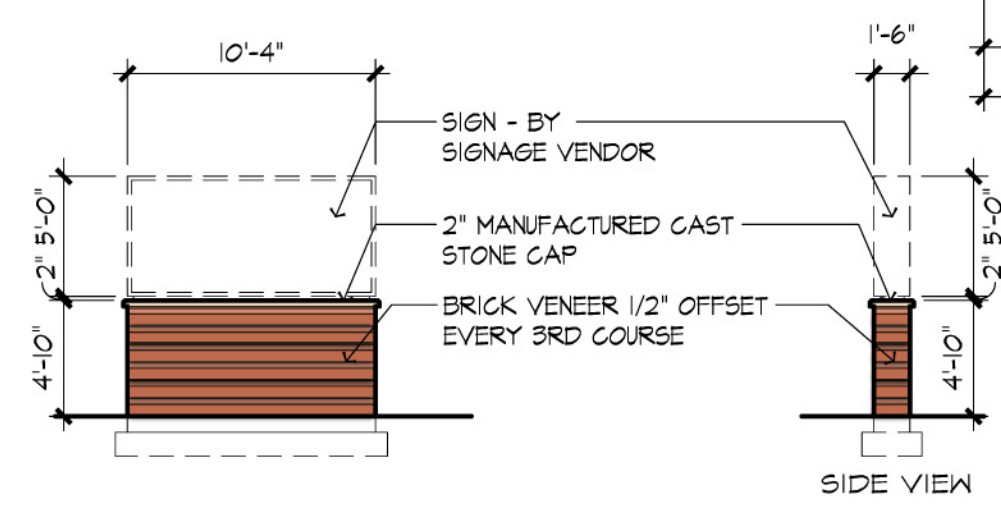


02 WEST ELEVATION - SIDE FACADE
A3.01 SCALE: 1/8" = 1'-0"

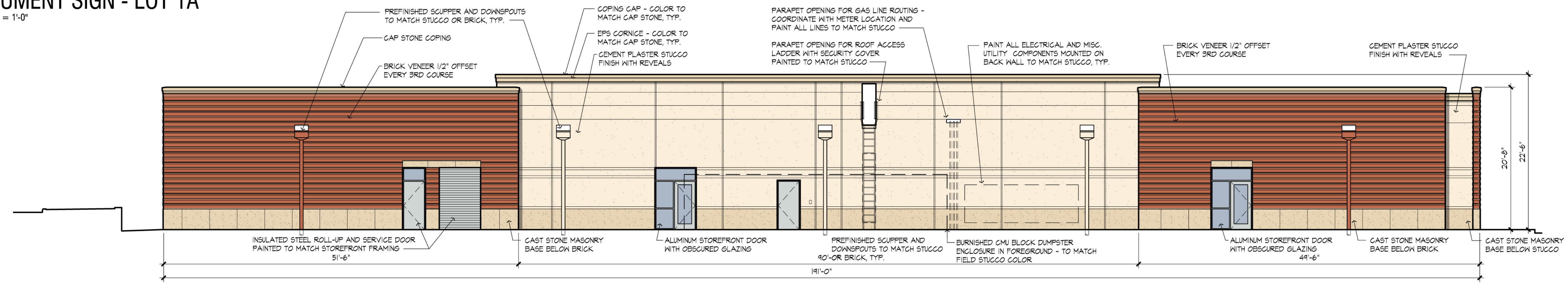


03 EAST ELEVATION - SIDE FACADE
A3.01 SCALE: 1/8" = 1'-0"

East Elevation Calculations
Brick Area/Percentage: 956 sf / 49%
Stucco Area/Percentage: 137 sf / 7%
Glazing Area/Percentage: 455 sf / 23%
Stone Tile Veneer Area/Percentage: 152 sf / 8%
Cast Stone Area/Percentage: 137 sf / 7%
Aluminum Awning Area: 46 sf
Cap Stone Coping Area: 65 sf
Total Facade Area: 1,948 sf



05 MONUMENT SIGN - LOT 1A
A3.01 SCALE: 1/8" = 1'-0"



04 NORTH ELEVATION - REAR FACADE
A3.01 SCALE: 1/8" = 1'-0"

North Elevation Calculations
Brick Area/Percentage: 1,529 sf / 37%
Stucco Area/Percentage: 1,960 sf / 48%
Glazing Area/Percentage: 216 sf / 5%
Cast Stone Area/Percentage: 263 sf / 7%
Cap Stone Coping Area: 132 sf
Total Facade Area: 4,100 sf