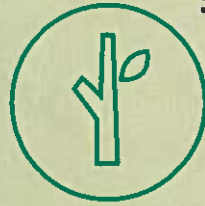


Flock Safety Tech Specs



License plate reading cameras that capture more evidence for your city.



Dual Solar Panels

- Voltage: 18-20V
- Weight: 25.73 lbs (with hardware)
- Length: 21.25"
- Width: 28"
- Mount: Pole top or side of existing pole

Pole

- DOT Breakaway Pole - 12' installed height
- Diameter: 2.875" OD, 2.125" ID
- Material: 6061 Aluminum with black coating
- Alloy: 6061
- Weight: 32 lbs

Camera

- Length: 8.75"
- Height: 5"
- Width: 2.875"
- Mounting: Adjustable band clamps
- Weight: 3lbs
- Footage: Uploads via integrated LTE
- Field of View: 15' wide, 65' distance
- Assembly: Flock Safety in Atlanta, GA



Install Anywhere



Solar &
Existing Pole



Solar &
Flock Pole



Electric &
Existing Pole

4

3

2

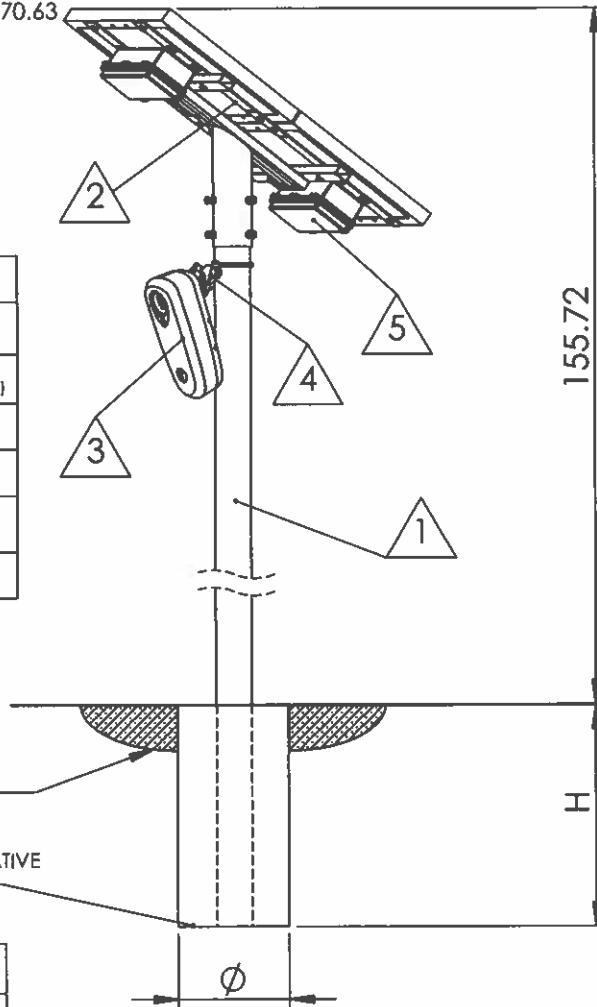
1

NOTES:

- 1 POLE IS BREAKAWAY 2.875" (73mm) IN DIAMETER 6063-T52 ALUMINUM WITH WALL THICKNESS .203" (5.16mm) AS PER 12/6/2007 FHWA LETTER.
- 2 THE PANEL ASSEMBLY MAY NOT EXCEED TWO BATTERY PACKS
- 3. MAX TOTAL WEIGHT OF ASSEMBLY IS 30.8 LBS (13970.63 GRAMS)

REVISION HISTORY			
REV.	DESCRIPTION	DATE	APPROVED
A	INITIAL DRAWING	10/26/2020	

BOM						
Item	Part Number	Part Name	QTY.	MASS (LB)	DIMENSIONS LxWxH (IN)	CROSS-SECTIONAL AREA (FT^2)
1	204-00029	14' BLACK 2-PIECE POLE	1	17	2.9 x 2.9 x 168.0	3.0 (2' FOUNDATION)
2	701-00116	Double Panel - Top Mount	1		21.3 x 28.3 x 10.5	2.1
3	701-0059	Flock Safety Camera	1	3.6	3.3 x 4.3 x 10.5	.3
4	702-0007	RAM Boll Mount & Adapter	1	1.4	N/A	N/A
5	701-00011	Battery Pack	2	4.4	2.8 x 3.9 x 10.8	N/A



FOUNDATION SPECIFICATIONS				
TYPE	V_MAX (MPH)	CAISSON Ø (IN)	CAISSON H (IN)	SOLAR PANEL ELEVATION FROM GRADE (FT MAX)
1*	85	8	24	12
2	110	12	30	12
3	130	12	36	12
4	150	16	48	12

* STANDARD INSTALLATION SPECIFICATIONS

PROPRIETARY AND CONFIDENTIAL
 THE INFORMATION CONTAINED IN THIS DRAWING IS THE SOLE PROPERTY OF FLOCK SAFETY. ANY REPRODUCTION IN PART OR AS A WHOLE WITHOUT THE WRITTEN PERMISSION OF FLOCK SAFETY IS PROHIBITED.

DIMENSIONS ARE IN INCHES TOLERANCES: FRACTIONAL: ±1/16 ANGULAR: X.X ±3° X.XX ±1° DECIMAL: X.X ±.02 X.XX ±.01 X.XXX ±.005		NAME	DATE
MATERIAL		DRAWN	
FINISH		CHECKED	
NEXT ASSY USED ON		ENG APPR.	
APPLICATION		MFG APPR.	
DO NOT SCALE DRAWING		Q.A.	
		COMMENTS:	

flock safety

TOP POLE MOUNT - DOUBLE SOLAR PANEL WITH 2 EXTERNAL BATTERIES

SIZE DWG. NO. **A 905-00005** REV **A**

SCALE: 1:20 SHEET 1 OF 1

4

3

2

1

4

3

2

1

NOTES:



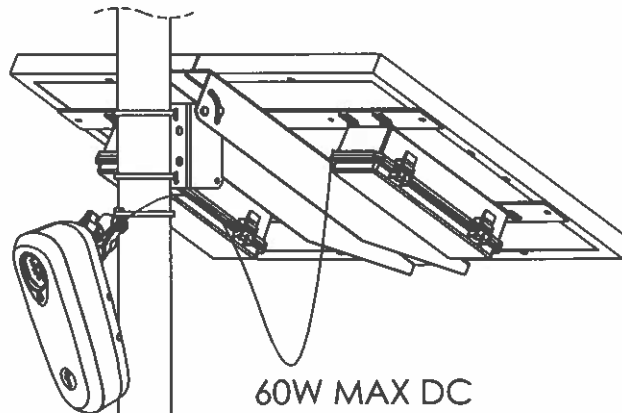
POLE SHOULD BE 2" - 3" IN DIAMETER

2.

MAX WEIGHT OF SOLAR PANEL AND MOUNT IS 20.8 LBS (13063.45 GRAMS)

REVISION HISTORY

REV.	DESCRIPTION	DATE	APPROVED
A	INITIAL DRAWING	6/9/2020	CORRIGAN
B	UPDATE BOM TABLE AND WEIGHTS	6/9/2020	CORRIGAN



BILL OF MATERIALS

ITEM NO.	P/N	LIBRARY NAME	DESCRIPTION	QTY.	WEIGHT (LBS)
1	701-00059	Flock Safety Camera	The Flock Safety LPR camera used in all install types	1	3.6
2	701-00117	Double Panel - Side Mount	Double solar panel used for installation on existing utility, light, or traffic poles	1	15
3	702-00007	RAM Ball Mount & Adapter	Mount used to secure the Flock Safety LPR Camera to either a Flock pole or an existing utility, light, or traffic pole	1	1.4
4	701-00111	External Battery Pack	External battery used to increase battery capacity of the install for high traffic or low solar environments	2	4.4

DIMENSIONS ARE IN INCHES
TOLERANCES:
FRACTIONAL: $\pm 1/16$
ANGULAR: $X.X \pm 3^\circ$ $X.XX \pm 1^\circ$
DECIMAL:
 $X.X \pm .02$ $X.XX \pm .01$ $X.XXX \pm .005$

MATERIAL

FINISH

DO NOT SCALE DRAWING

NAME DATE

DRAWN

CHECKED

ENG APPR.

MFG APPR.

Q.A.

COMMENTS

flock safety

SIDE POLE MOUNT -
DOUBLE SOLAR PANEL
WITH 2 EXTERNAL
BATTERIES REV B

SIZE DWG. NO.

A 905-00006

REV

B

SCALE: 1:20

SHEET 1 OF 1

PROPRIETARY AND CONFIDENTIAL

THE INFORMATION CONTAINED IN THIS DRAWING IS THE SOLE PROPERTY OF FLOCK SAFETY. ANY REPRODUCTION IN PART OR AS A WHOLE WITHOUT THE WRITTEN PERMISSION OF FLOCK SAFETY IS PROHIBITED.

NEXT ASSY

USED ON

APPLICATION

4

3

2

1

TRIANGULAR SLIPBASE INSTALLATION GENERAL REQUIREMENTS

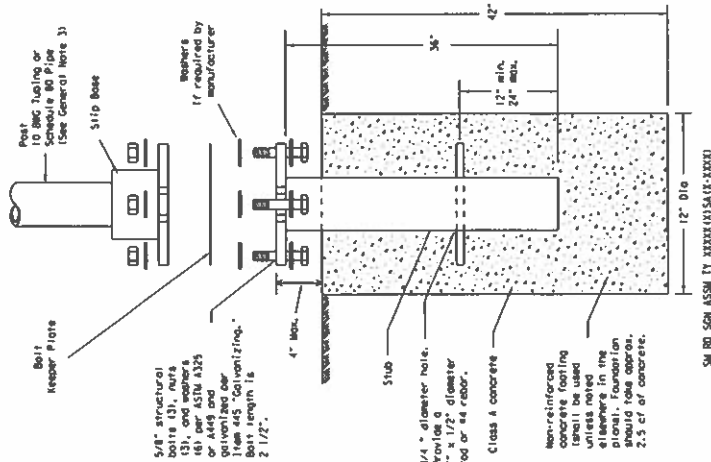
NOTE

There are various devices approved for the Triangular Slipbase System. Please reference the Material Producer List for approved slip base systems. http://www.txdot.gov/business/producer_list.htm The devices shall be installed per manufacturers' recommendations. Installation procedures shall be provided to the Engineer by Contractor.

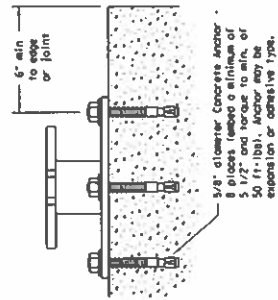
- GENERAL NOTES:**
- Slip base shall be permanently marked to indicate manufacturer, method, design, and location of marking are subject to approval of the TxDOT Traffic Standards Engineer.
 - 10 BAC tubing (2.875" outside diameter)
 - Seamless or electric-resistance welded steel tubing or pipe
 - Steel shall be A513S or 35 per ASTM A101 or ASTM A108
 - Other materials may be used after the following:
 - 15,000 PSI minimum yield strength
 - 70,000 PSI minimum tensile strength
 - 20% minimum elongation in 2"
 - Wall thickness (uncoated) shall be within the range of 0.125" to 0.138"
 - Coated tubing shall be within the range of 0.125" to 0.142"
 - Coated tubing per ASTM A123 or ASTM A513 (210). For uncoated steel tubing ASTM A453, recast tube outside diameter weld seam by metalizing with zinc wire per ASTM B833.
 - Schedule 80 Pipe (2.875" outside diameter)
 - 0.276" nominal wall thickness
 - Steel tubing per ASTM A580 or C
 - Minimum yield strength of 42,000 PSI
 - Minimum tensile strength of 84,000 PSI
 - Minimum elongation in 2" of 21%
 - Concrete used for slip base shall be within the range of 2,855" to 2,895"
 - Outside diameter (uncoated) shall be within the range of 2.855" to 2.895"
 - Conventional per ASTM A123
 - See the Traffic Operations Division website for detailed drawings of sign clearences and Texas Universal Triangular Slipbase System components. The website address is: <http://www.txdot.gov/publications/traffic.htm>
 - Sign supports shall not be attached except where shown. Sign support posts shall not be spliced.

ASSEMBLY PROCEDURE

- Foundation** 12-inch diameter by 42-inch deep hole. If solid rock is encountered, the depth of the foundation may be reduced such that it is embedded a minimum of 18 inches into the solid rock.
- The Engineer may permit batches of concrete less than 2 cubic yards to be mixed with a portable, motor-driven concrete mixer. For small placements less than 0.5 cubic yards, hand mixing in a suitable container may be allowed by Engineer. Concrete shall be Class A.
 - Run the pipe end of the slip base stub into the center of the concrete. Insert the stub end and form the concrete around the stub. The concrete shall be placed in the concrete end stub.
 - Continue to work the stub into the concrete until it is between 2 to 4 inches above the ground.
 - Pump the stub, allow a minimum of 4 days to set, unless otherwise directed by the Engineer.
 - The triangular slipbase system is multidirectional and is designed to release when struck from any direction.
- Support**
- Cut support so that the bottom of the sign will be 7 to 7.5 feet above the edge of the travelway (i.e., edge of the closest level when slip plate is below the edge of pavement or 7 to 7.5 feet above slip plate when the slip plate is above the edge of the travelway). The cut shall be stub and straight.
 - Sign to support using connections shown. When multiple signs are installed on the same support, ensure the minimum clearances between each sign is maintained. See SMD(SLIP-2) for clearances based on sign types.



CONCRETE ANCHOR



SM RD SON ASSM TY XIXRX(X)S(AR-XXXX)

Texas Department of Transportation
Traffic Operations Division

SIGN MOUNTING DETAILS

SMALL ROADSIDE SIGNS

TRIANGULAR SLIPBASE SYSTEM

SMD(SLIP-1) - 08

REV	DATE	BY	CHKD	APP'D
1	08/11/08	SM	SM	SM
2	08/11/08	SM	SM	SM
3	08/11/08	SM	SM	SM
4	08/11/08	SM	SM	SM
5	08/11/08	SM	SM	SM
6	08/11/08	SM	SM	SM
7	08/11/08	SM	SM	SM
8	08/11/08	SM	SM	SM
9	08/11/08	SM	SM	SM
10	08/11/08	SM	SM	SM
11	08/11/08	SM	SM	SM
12	08/11/08	SM	SM	SM
13	08/11/08	SM	SM	SM
14	08/11/08	SM	SM	SM
15	08/11/08	SM	SM	SM
16	08/11/08	SM	SM	SM
17	08/11/08	SM	SM	SM
18	08/11/08	SM	SM	SM
19	08/11/08	SM	SM	SM
20	08/11/08	SM	SM	SM

288

