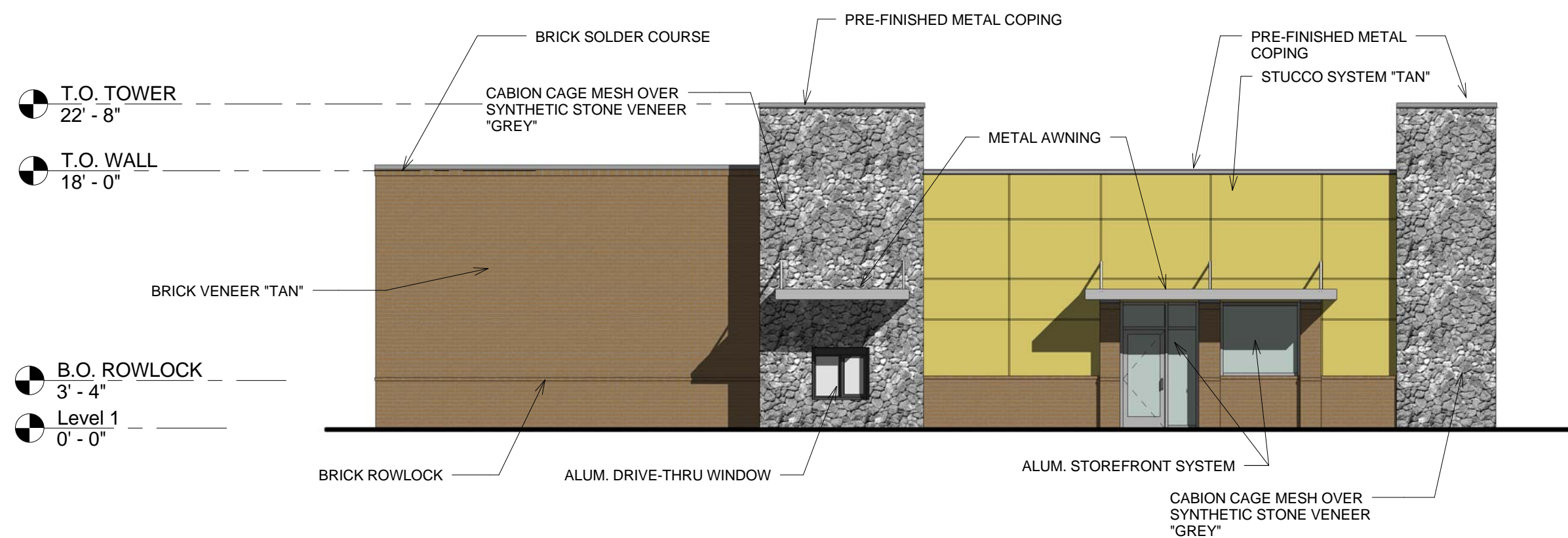
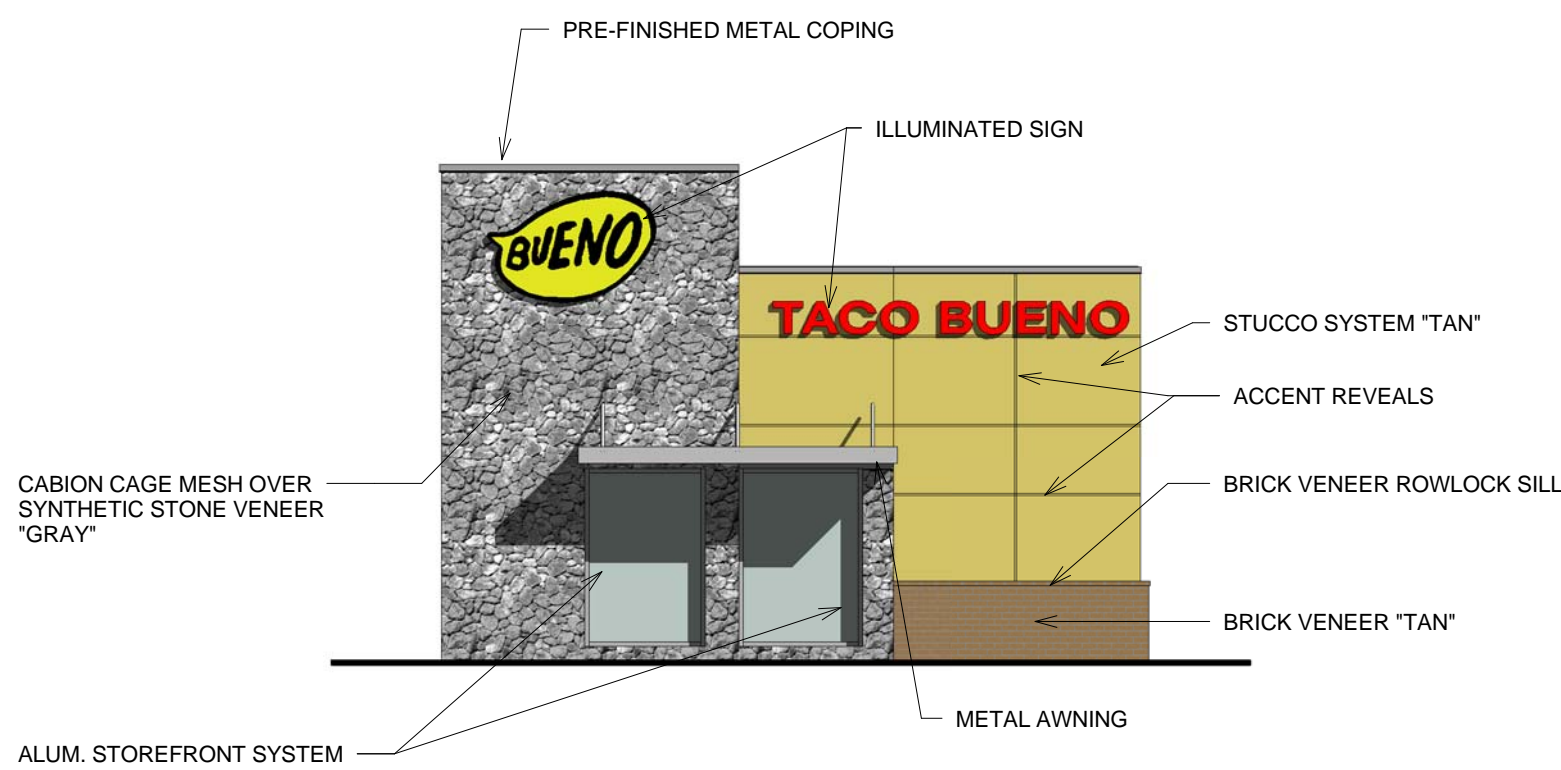


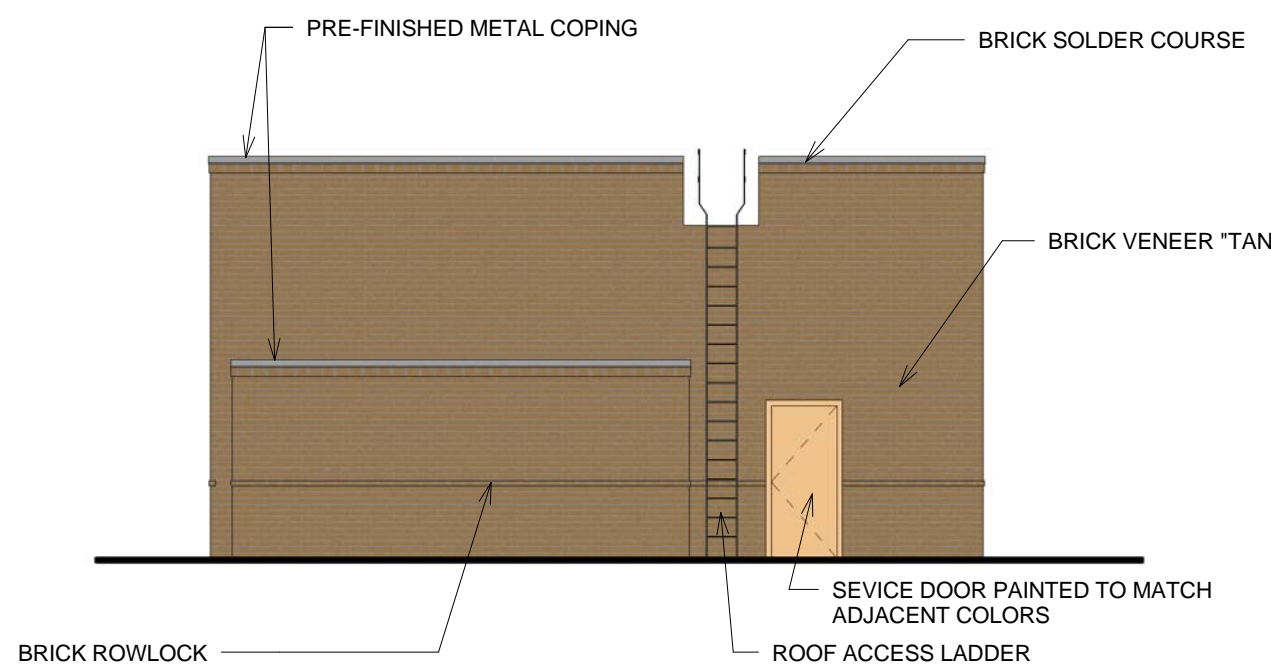
1 SOUTH-EAST  
1/8" = 1'-0"



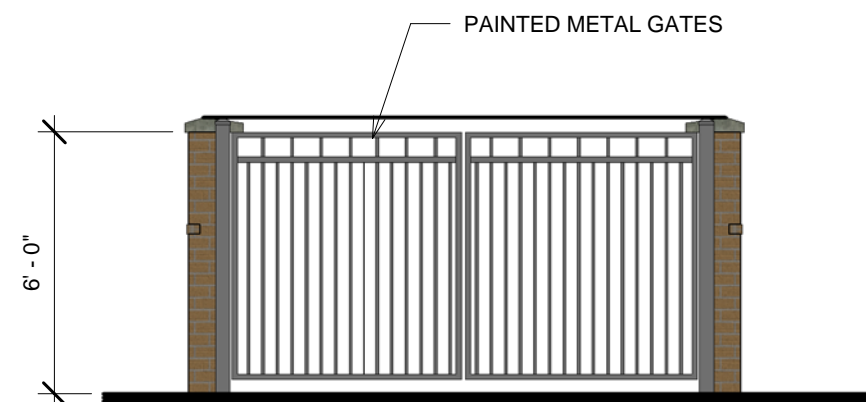
2 NORTH-EAST  
1/8" = 1'-0"



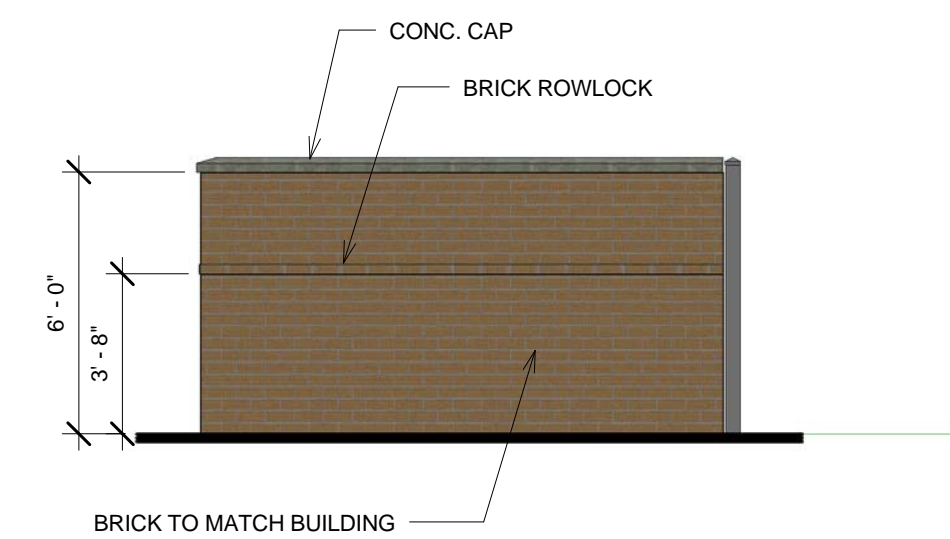
3 NORTH-WEST (E. BROADWAY VIEW)  
1/8" = 1'-0"



4 SOUTH-WEST  
1/8" = 1'-0"



8 TRASH ENCLOSURE (FRONT)  
1/4" = 1'-0"



9 TRASH ENCLOSURE (SIDE)  
1/4" = 1'-0"



5 3D View 1



6 3D View 2



7 3D View 3

## MATERIAL CALCULATIONS TABLE

SOUTHWEST ELEVATION:			NORTHEAST ELEVATION:		
BRICK:	601 SF	38%	BRICK:	611 SF	41%
MANUFACTURED STONE:	424 SF	27%	MANUFACTURED STONE:	397 SF	26%
DOORS & WINDOWS:	181 SF	12%	DOORS & WINDOWS:	79 SF	5%
METAL PARAPET CAP:	29 SF	2%	METAL CANOPIES:	20 SF	1%
METAL CANOPIES:	30 SF	2%	METAL PARAPET CAP:	28 SF	2%
STUCCO:	310 SF	19%	STUCCO:	370 SF	25%
	1,575 SF	100%		1,505 SF	100%
NORTHWEST ELEVATION:			SOUTHEAST ELEVATION:		
BRICK:	43 SF	7%	BRICK:	602 SF	93%
MANUFACTURED STONE:	270 SF	42%	DOOR:	25 SF	4%
DOORS & WINDOWS:	92 SF	14%	METAL PARAPET CAP:	19 SF	3%
METAL PARAPET CAP:	11 SF	2%			
METAL CANOPIES:	11 SF	2%			
STUCCO:	215 SF	33%			
	642 SF	100%			

CASE #: DS15-001

JOB NO. :

7.010.0115

PROJECT:

TACO BUENO  
(STORE # XXXX)  
VILLAGES OFF BROADWAY  
MANSFIELD, TEXAS 76063

OWNER:

TACO BUENO RESTAURANTS, LP  
PARK WEST | SUITE 800  
1605 LBJ FREEWAY, SUITE 800  
FARMERS BRANCH, TX 75234  
(972) 919-4827

PRELIMINARY  
REVIEW ONLY

DOCUMENT INCOMPLETE. THIS  
DRAWING IS FOR PAZ PURPOSES  
ONLY AND NOT INTENDED FOR  
BIDDING OR CONSTRUCTION.

ARCHITECT: RODNEY ST. JOHN, AIA  
REGISTRATION NO. 147291

1/29/14

PRIZM ARCHITECTS  
INTERNATIONAL  
LLC, INC.

ARCHITECTS DESIGNERS PLANNERS  
580 DECKER DRIVE,  
SUITE 170  
IRVING, TX. 75062  
(972) 714-0420 OFFICE  
(972) 714-0282 FAX

DATE: 1/29/14

DRAWN BY: PAI

CHECKED BY: RCS

REVISIONS:

1	
2	
3	
4	
5	
6	
7	
8	
9	

SHEET NO.

P&Z