

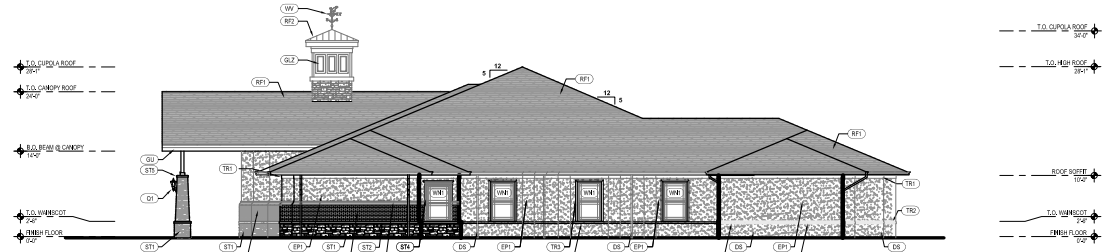
LEGEND: EXTERIOR MATERIAL

- (BR) BRICK
- (CS) 1 X 6 CEDAR TRIM, S4S (SURFACED FOUR SIDES), STAINED
- (CD) 1 X 4 CEDAR TRIM, S4S (SURFACED FOUR SIDES), STAINED
- (CB) CEDAR BRACE, S4S (SURFACED FOUR SIDES), STAINED
- (TR) 1 X 6 HARKER TRIM (SCOTCH)
- (TD) 1 X 4 HARKER TRIM (SCOTCH)
- (TB) 1 X 4 HARKER TRIM (SHEDDING)
- (ST) FRESH-PINKED STEEL DOWNSPOUTS - TO 18" GUTTER BY ANNEAL METALS OF INDIANAPOLIS
- (EF) STUCCO - FINE TEXTURE
- (GL) GLAZING - 1/2" X 1 1/4"
- (G2) FRESH-PINKED STEEL GUTTER - HALF-CURVED FINISH PROFILE BY ANNEAL METALS OF INDIANAPOLIS
- (BT) ASPHALT COMPOSITE SHINGLES
- (MT) METALLIC STAINLESS STEEL BY CORUS/ARCELORMITTAL
- (BS) STAINLESS STEEL METAL ROOF - CHARING CROSS COLORED FINISH
- (CS) WALL SCORING LIGHT FINISH, RECYCLED INSULATION
- (CB) WALL SCORING LIGHT FINISH, RECYCLED INSULATION
- (ST) CUSTOMER-BUILT ONE-PIECE WOODEN ROOF WITH MOULDING (BUILT BY KAPPA KAPPA OMEGA)
- (ST) CAST STONE WATER TABLE - LOWER
- (ST) CAST STONE WATER TABLE - UPPER
- (ST) CAST STONE TRIM
- (ST) CAST STONE COLUMN CAP
- (WB) 402 4" X 4" LOKAL DOUBLE INSULATED DOUBLE HUNG WINDOW
- (WB) 407 4" X 4" LOKAL DOUBLE INSULATED SINGLE HUNG WINDOW
- (WT) WEATHERVANE - GALV. W/ST. COPPER BY CAMPBELL HULL INDUSTRIES

GENERAL NOTES:

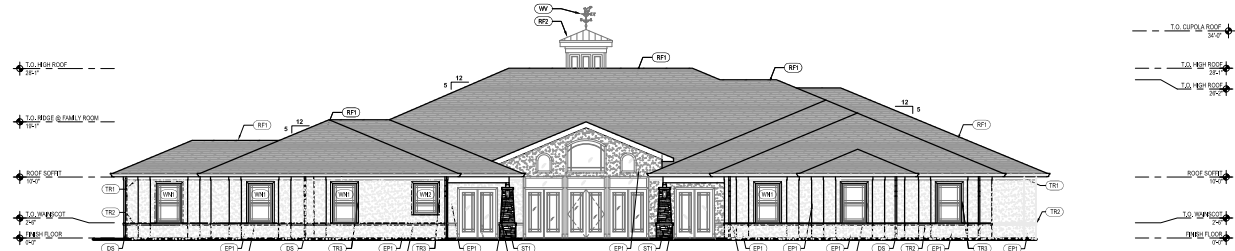
1. HVAC EQUIPMENT TO BE SCREENED WITH LANDSCAPING HEDGES. DETAILED SITE PLAN FOR FOUNDATION PLANTING AND PASSIVE SPACE TO BE SUBMITTED AT TIME OF BUILDING PERMIT.

2. DUMPSTER ENCLOSURE MATERIAL WILL MATCH BUILDING MATERIAL BRICK AND STONE. FINAL DUMPSTER ENCLOSURE DETAILS WILL BE SUBMITTED AT TIME OF BUILDING PERMIT.



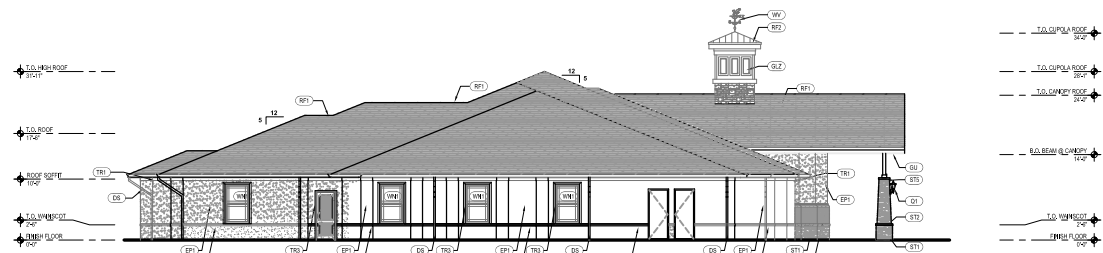
EXTERIOR ELEVATION: RIGHT SIDE SCALE: 1/8" = 1'-0" 4

BRICK	100 SF	
STONE	120 SF	
<hr/>		
MASONRY	220 SF	17%
OTHER	1100 SF	
<hr/>		
TOTAL	1320 SF	



EXTERIOR ELEVATION: REAR SCALE: 1/8" = 1'-0" 3

BRICK	0 SF	
STONE	0 SF	
<hr/>		
MASONRY	0 SF	0%
OTHER	1700 SF	
<hr/>		
TOTAL	1700 SF	



EXTERIOR ELEVATION: LEFT SIDE SCALE: 1/8" = 1'-0" 2

BRICK	20 SF	
STONE	60 SF	
<hr/>		
MASONRY	80 SF	6%
OTHER	1310 SF	
<hr/>		
TOTAL	1390 SF	



EXTERIOR ELEVATION: FRONT SCALE: 1/8" = 1'-0" 1

BRICK	230 SF	
STONE	380 SF	
<hr/>		
MASONRY	610 SF	31%
OTHER	1390 SF	
<hr/>		
TOTAL	2000 SF	

OVERALL		
BRICK	350 SF	
STONE	560 SF	
<hr/>		
MASONRY	910 SF	14%
OTHER	5500 SF	
<hr/>		
TOTAL	6410 SF	