

ROOM FINISH SCHEDULE										
ROOM NO.	ROOM NAME	FLOOR	BASE	WALL FINISHES				CEILING	CEILING HEIGHT	REMARKS
				NORTH	EAST	SOUTH	WEST			
101	VESTIBULE	1	1	1	1	1	1	3	9'-6"	1
102	STUDIO	3	1	1	1	1	1	3	13'-6"	1, 2
103	PRODUCTION	3	1	1	1	1	1	3	13'-6"	1, 2
104	IT CLOSET	1	1	1	1	1	1	1	9'-0"	1
105	SERVER	1	1	1	1	1	1	1	9'-0"	1
106	HALL	1	1	1	1	1	1	3	9'-0"	1
107	WOMEN	2	2	2	2	2	2	2	9'-0"	1
108	MEN	2	2	2	2	2	2	2	9'-0"	1
109	HALL	1	1	-	1	-	1	3	9'-0"	1
110	HALL	1	1	1	1	0	1	3	9'-0"	1
111	OFFICE	1	1	0	1	0	0	1	VARIES	1
112	OFFICE	1	1	0	1	1	1	1	VARIES	1
113	VESTIBULE	1	1	1	1	1	1	3	9'-0"	1
114	CONFERENCE ROOM	1	1	0	0	0	1	1	VARIES	1
115	TOILET	2	2	2	2	2	2	2	9'-0"	1
116	OFFICE	1	1	1	1	1	1	3	9'-0"	1
117	OPEN OFFICE	1	1	1	1	1	1	3	10'-0"	1
118	OFFICE	1	1	1	1	1	1	3	9'-6"	1

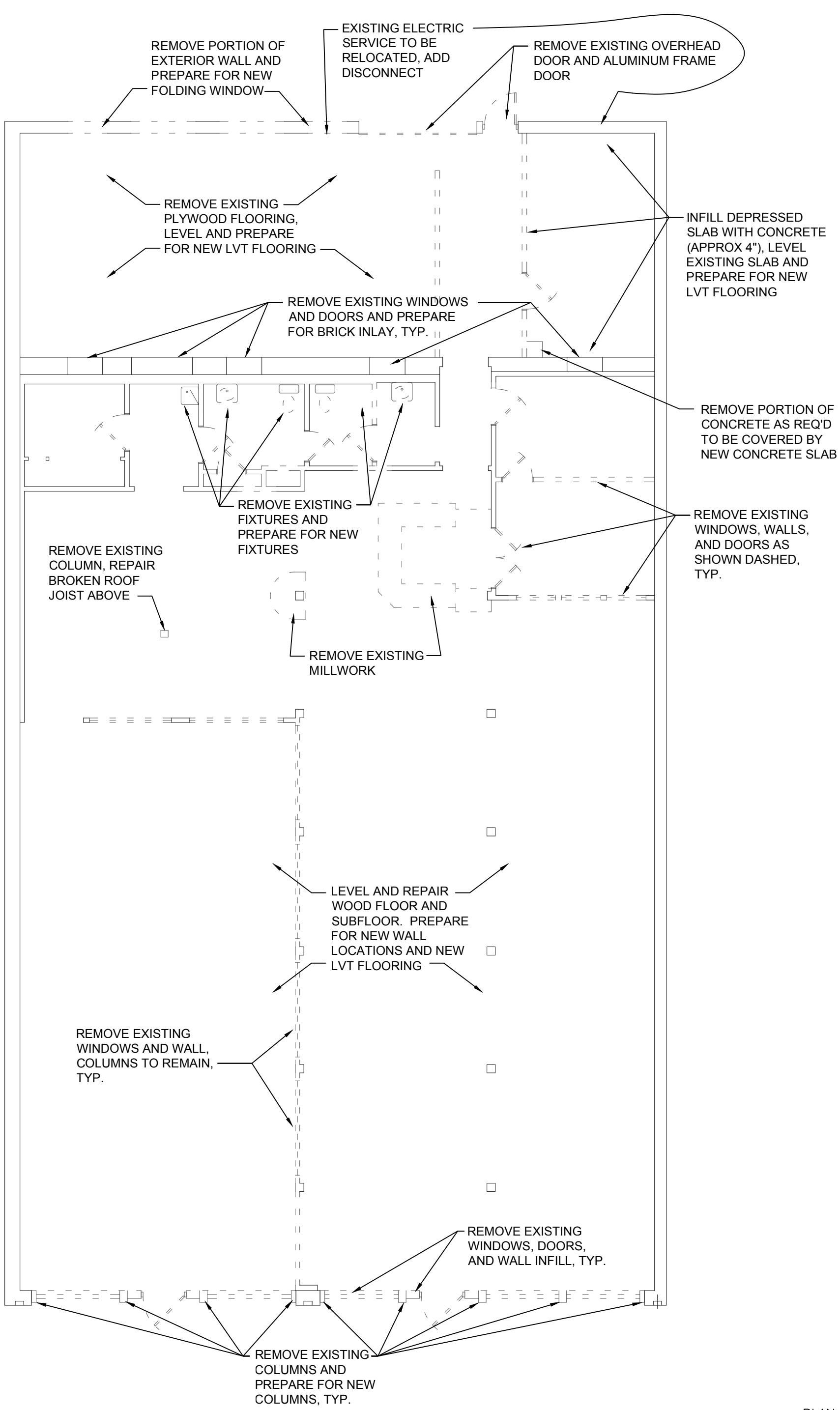
FLOOR:
0 - NONE / SEALED CONCRETE
1 - LVT
2 - CERAMIC TILE
3 - CORK PLANK FLOORING

WALL:
0 - NONE / EXPOSED STRUCTURE
1 - 5/8" TYPE X GYP. BOARD - TAPE, BED, TEXTURE, & PAINT.
2 - CERAMIC TILE (TO 7'-2" HIGH) OVER TAPED & BEDDED 5/8" MOISTURE RESISTANT GYP. BOARD.

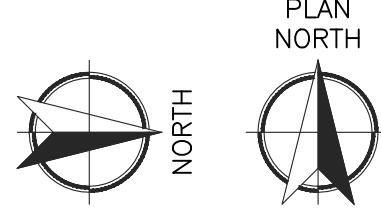
CEILING:
0 - NONE / EXPOSED STRUCTURE
1 - 5/8" TYPE X GYP. BOARD - TAPE, BED, TEXTURE, & PAINT.
2 - 5/8" MOISTURE RESISTANT GYP. BOARD - TAPE, BED, TEXTURE, & PAINT.
3 - 2'-0" x 2'-0" SUSPENDED REGULAR ACOUSTICAL CEILING TILES.
4 - PAINT EXPOSED STRUCTURE.

REMARKS:
1 - OWNER TO VERIFY ALL FINISHES (MAY RESULT IN CHANGE ORDER)
2 - CEILING TILE AND CEILING GRID TO BE BLACK

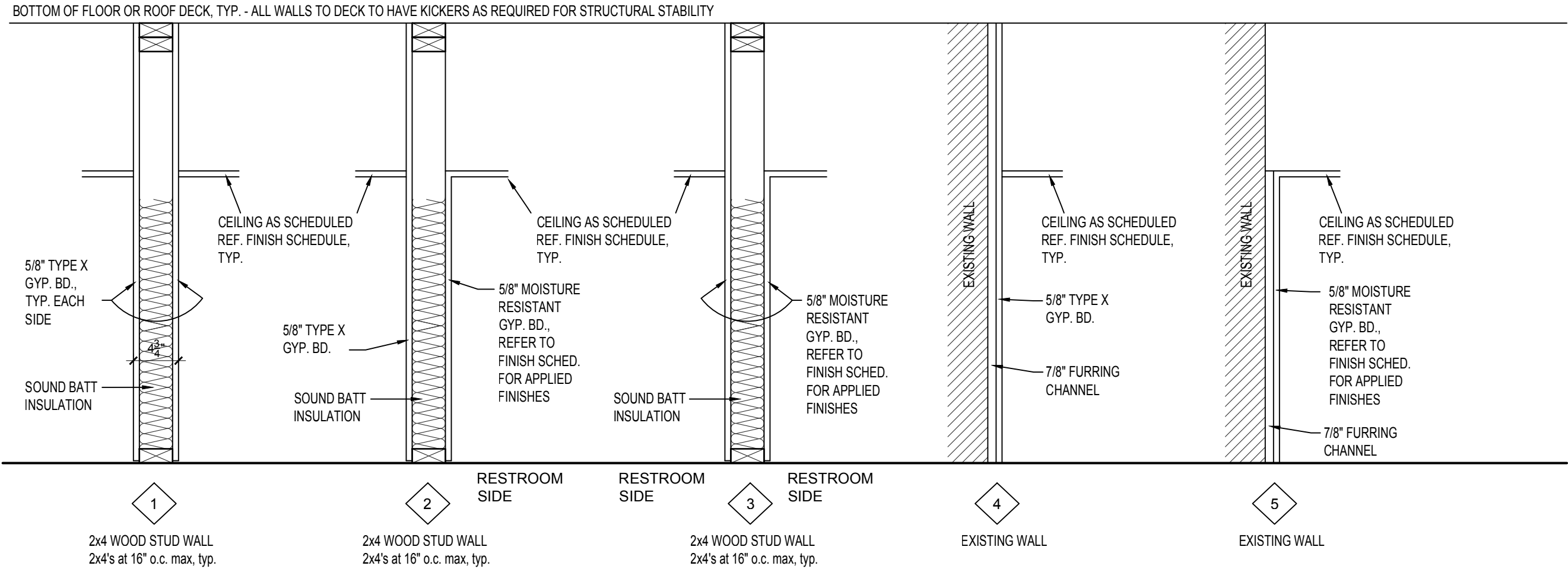
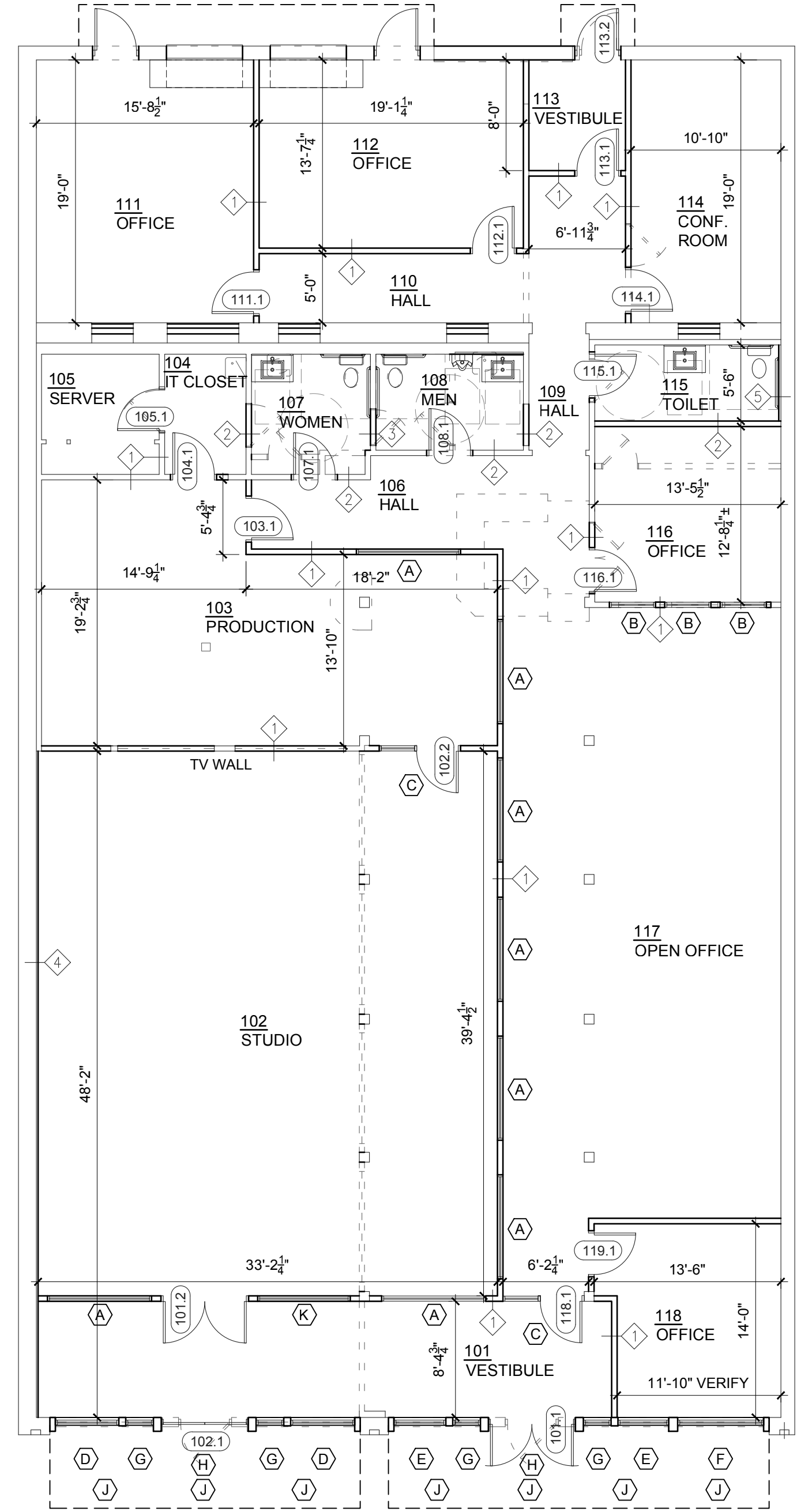
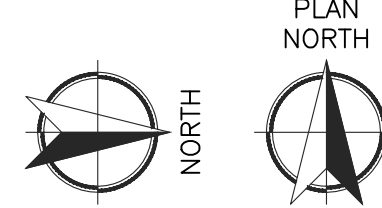
BASE:
0 - NONE / EXPOSED STRUCTURE
1 - 4" RESILIENT
2 - CERAMIC TILE



1 DEMO PLAN
SCALE: 1/8" = 1'-0"



2 FLOOR PLAN
SCALE: 1/8" = 1'-0"



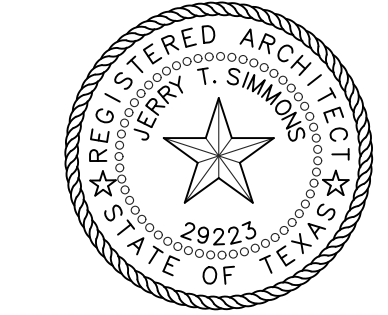
WALL TYPE SCHEDULE NOT TO SCALE - REFER TO FINISH SCHEDULE FOR APPLIED FINISHES. DIMENSIONS SHOWN ON FLOOR PLAN ARE TO FACE OF APPLIED FINISH WHERE CONDITION OCCURS (E.G. WHERE TILE IS SCHEDULED, 3/8" HAS BEEN ADDED TO EACH APPLICABLE FACE). REFER TO WALL SECTIONS FOR EXTERIOR WALLS.

GENERAL PLAN NOTES:

- ALL CONSTRUCTION TO COMPLY WITH BUILDING CODES AS LISTED ON COVER SHEET.
- REFER TO SHEETS A-0.01 & A-0.02 FOR HANDICAP ACCESSIBILITY STANDARDS.
- PROVIDE 2% CROSS-SLOPE ON ALL NEW SIDEWALKS (PORCHES).
- ALL DIMENSIONS ARE FACE TO FACE OF FINISH WALL, COLUMN CENTERLINES, OR DOOR / WINDOW OPENINGS.
- REFER TO MEP SHEETS FOR ALL MECHANICAL, ELECTRICAL, & PLUMBING REQUIREMENTS.
- REFER TO SHEET A-8.0 FOR DOOR AND WINDOW SCHEDULES.
- REFER TO SHEET A-1.0 FOR WALL TYPES AND FINISH SCHEDULES

LEGEND:

- 2/A-3.00 SECTION MARK - Detail No. / Sheet No.
- 205.1 DOOR NUMBER MARK - Refer Door Schedule on Sheet A-8.0
- A WINDOW / FRAME - Refer Frame Schedule on Sheet A-8.0
- 2 WALL TYPE MARK - Refer Wall Type Schedule A-1.0
- 5/A-5.02 SOUND INSULATION BATTS
- ELEVATION MARK - Detail No. / Sheet No.



PROGRESS DRAWING
NOT FOR REGULATORY
APPROVAL, PERMITTING,
OR CONSTRUCTION



**BCB LIVE
HISTORIC RENOVATION
115 N. MAIN ST.
MANSFIELD, TX 76063**

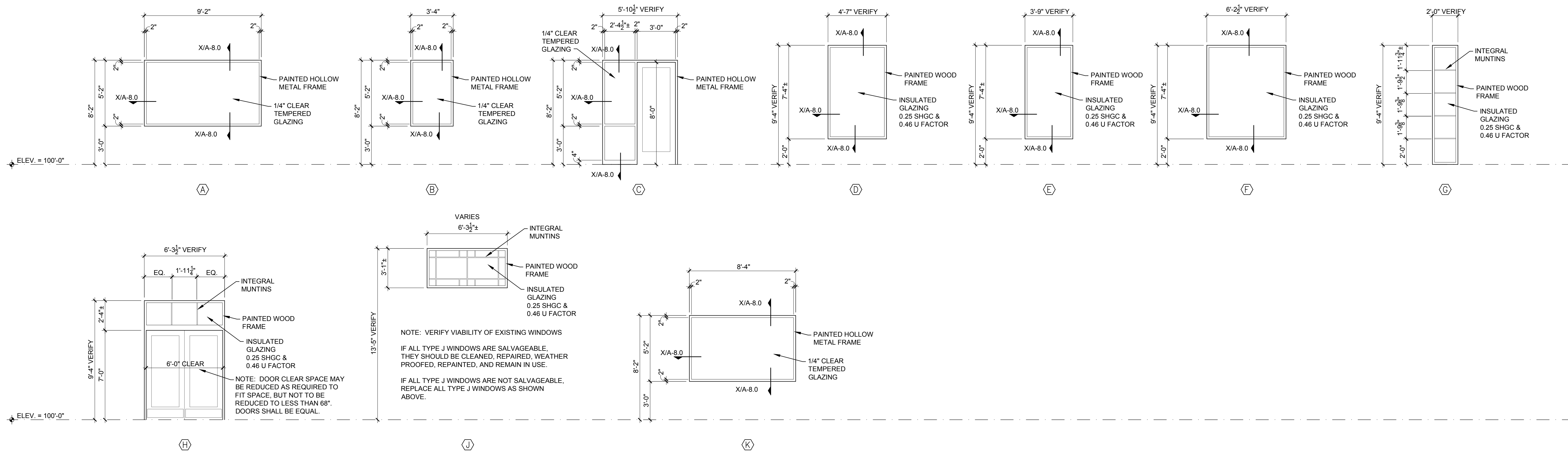
DATE ISSUED:
xx/xx/2022

REVISIONS:

SHEET CONTENTS:
WINDOW
SCHEDULE

SHEET NUMBER:

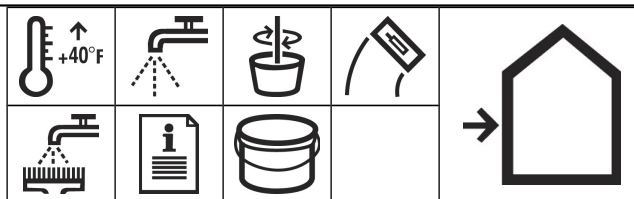
A-8.0



Product Bulletin

Sto Powerflex®

80280 Sto Powerflex Fine
 80281 Sto Powerflex Medium
 80282 Sto Powerflex Swirl
 80283 Sto Powerflex Freeform



Technical Data			
REPORT	TEST METHOD	TEST CRITERIA	TEST RESULTS
Accelerated Weathering	ASTM G-154	2,000 hours	No deleterious effects
Freeze/Thaw Resistance	ASTM E-2485	60 cycles	No deleterious effects
Flexibility	ASTM D-522	1/8" mandrel bend @ 20, 40, 70°F (-6.6, 4.4, 21°C)	Pass
Surface Burning	ASTM E-84	≤ 25 Flame Spread ≤ 450 Smoke Developed	Pass
Water Vapor Permeability (U. S. perms)	ASTM E-96 (Method B)	28 days	6.9
Water Absorption	Lab Method		16.9 %
Adhesion (psi)	ASTM D-4541	28 days	> 106 to concrete > 80 to stucco
VOC (g/L)	This product complies with US EPA (40 CFR 59) and South Coast AQMD (Rule 1113) VOC emission standards for architectural coatings. VOC less than 50 g/L.		

Sto Powerflex is a ready-mixed, elastomeric textured wall coating used as a decorative and protective wall finish over prepared vertical, above grade concrete, masonry and plaster/stucco substrates.

Coverage

Sto Powerflex Fine: 148-158 ft² (13.8-14.1 m²) per pail
 Sto Powerflex Medium: 111-120 ft² (10.3-11.2 m²) per pail
 Sto Powerflex Swirl: 120-130 ft² (11.2-12.1 m²) per pail
 Sto Powerflex Freeform: 92-160 ft² (8.5-14.9 m²) per pail

Coverages may vary depending on application technique and surface conditions.

Features	Benefits
1 Elastomeric	Bridges hairline cracks
2 Acrylic-Based	Excellent adhesion
3 Ready-Mixed	Ready to use; no additives needed
4 Water-Based	Safe, non-toxic; cleans up with water

Surface Preparation**Concrete, masonry and stucco:**

Surfaces must be free of all bond-inhibiting materials, including dirt, efflorescence, form oil and other foreign matter. Loose or damaged material must be removed by water blasting, sandblasting or mechanical wire brushing and repaired. Avoid application over irregular surfaces. Resurface, patch or level surfaces to required tolerance and smoothness with appropriate Sto leveling materials. Refer to ASTM D-4258 and ASTM D-4261 for complete details on methods of preparing cementitious substrates for coatings.

Priming:

Priming is recommended for best results - color uniformity, maximum finish coverage, and neutralizing high pH (highly alkaline) surfaces such as Portland cement stucco (including StoPowerwall® Stucco), StoQuik® Silver Systems, and prepared concrete and masonry surfaces.

Apply primer by brush, roller, or with proper spray equipment and allow to dry before application of finish. Where pH is high (up to pH of 13), and to reduce time to application of finish, use StoPrime Hot. Refer to product bulletins for detailed information on Sto primers.

Packaging

5 gal. pail (19 L).

Shelf Life

18 months, if properly stored and sealed.

Storage

Protect from extreme heat [90°F (32°C)], freezing, and direct sunlight.

Sto Powerflex®

Mixing

Mix with a clean, rust-free electric drill and paddle. A small amount of clean water may

be added to aid workability. Limit addition of water to amount needed to achieve the finish texture.

Application

Apply only to sound, clean, dry, properly prepared, frost-free surfaces.

Trowel

Apply Sto Powerflex with a clean stainless steel trowel to a rough thickness slightly more than the largest aggregate size. Use the trowel to scrape the material down to a uniform thickness no greater than the largest aggregate size. Achieve final texture by floating with the appropriate trowel in a figure eight motion with a plastic float. For Sto Powerflex Freeform, application thickness varies depending on the pattern or texture desired. Apply to a minimum 1/16" (1.6 mm), maximum 3/16" (4.8 mm) thickness in one pass. Texturing may be achieved by trowel, special roller or putty knife. Once applied, the working time is up to 20 minutes depending upon material, ambient temperatures and surface conditions.

Spray

Apply Sto Powerflex with a hand-held gravity-feed hopper type sprayer, texture spray pump machine, or other appropriate equipment such as the StoSilo system or Sto's M-8 spray pump.

Apply an even coat to ensure full coverage of the surface. (Spray application is not recommended for Sto Powerflex Swirl).

IMPORTANT: ALWAYS check color for proper match. If color does not match, STOP—call your Sto representative. For best results always prime cementitious substrates. Apply coating in a continuous application, always working from a wet edge or architectural break to eliminate cold joints. Minor shade variations may occur from batch to batch (refer to batch no. on pail). Avoid installing separate batches side-by-side and avoid application in direct sunlight. Avoid installing new finish adjacent to weathered or aged finish. Sto Corp. will not be responsible for shade or color variation from batch to batch, variation caused by application or substrate deficiencies, or fading resulting from natural causes such as weather. See Tech Hotline Nos. 0694-C, 0893-EC and 1202-CF for helpful tips on prevention of color problems. Protect installed product from rain, freezing, and continuous high humidity until completely dry.

Curing/Drying

Sto Powerflex dries within 24 hours under normal conditions [70°F (21°C), 50% RH]. Drying time varies with temperature/humidity and surface conditions.

Clean Up

Clean tools and equipment with water immediately after use. Dried material can only be removed mechanically.

Limitations

- Use Sto Powerflex only when surface and ambient temperatures are above 40°F (4°C) during application and drying period.
- Sto Powerflex is not recommended over interior wall surfaces.
- Sto Powerflex should not be used on horizontal, below grade or water immersed surfaces.

Health And Safety**WARNING!**

Causes eye and skin irritation.

Precautionary Statement

Wash hands thoroughly after handling. Wear protective gloves/protective clothing/eye protection/face protection.

FIRST AID MEASURES

Eye Contact: Immediately flush eyes with plenty of water for at least 15 to 20 minutes. Ensure adequate flushing of the eyes by separating the eyelids with fingers. Get immediate medical attention.

Skin Contact: Immediately wash skin with plenty of soap and water for 15 to 20 minutes, while removing contaminated clothing and shoes. Get medical attention if irritation develops or persists.

Inhalation: If inhaled, remove to fresh air. If not breathing, give artificial respiration or give oxygen by trained personnel. Seek immediate medical attention.

Ingestion: If swallowed, do NOT induce vomiting. Call a physician or poison control center immediately. Never give anything by mouth to an unconscious person.

Store locked up.

Spills: Collect with suitable absorbent material such as cotton rags.

Disposal: Dispose of in accordance with local, state or federal regulations.

Warning

KEEP CONTAINER CLOSED WHEN NOT IN USE. KEEP OUT OF THE REACH OF CHILDREN. NOT FOR INTERNAL CONSUMPTION. FOR INDUSTRIAL USE ONLY.

Consult the Safety Data Sheet (SDS) on www.stocorp.com for further health and safety information.

LIMITED WARRANTY

This product is subject to a written limited warranty which can be obtained free of charge from Sto Corp.

Refer to *Sto Specifications* for more complete information on proper use and handling of this product.

Sto Corp.
3800 Camp Creek Parkway
Building 1400, Suite 120
Atlanta, GA 30331

Tel: 404-346-3666
Toll Free: 1-800-221-2397
Fax: 404 346-3119

www.stocorp.com

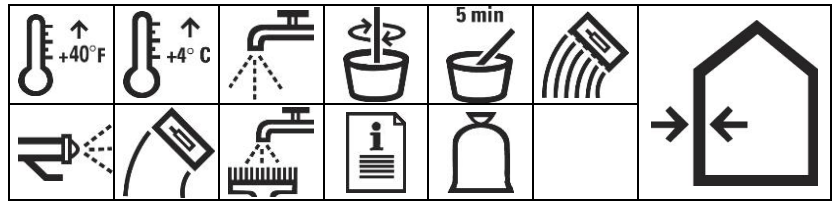
**S155-80280, 80281,
80282, 80283**
Revision Number: A3.0
Date: 06/2016

Attention

This product is intended for use by qualified professional contractors, not consumers, as a component of a larger construction assembly as specified by a qualified design professional, general contractor or builder. It should be installed in accordance with those specifications and Sto's instructions. Sto Corp. disclaims all, and assumes no, liability for on-site inspections, for its products applied improperly, or by unqualified persons or entities, or as part of an improperly designed or constructed building, for the nonperformance of adjacent building components or assemblies, or for other construction activities beyond Sto's control. Improper use of this product or use as part of an improperly designed or constructed larger assembly or building may result in serious damage to this product, and to the structure of the building or its components. **STO CORP. DISCLAIMS ALL WARRANTIES EXPRESSED OR IMPLIED EXCEPT FOR EXPLICIT LIMITED WRITTEN WARRANTIES ISSUED TO AND ACCEPTED BY BUILDING OWNERS IN ACCORDANCE WITH STO'S WARRANTY PROGRAMS WHICH ARE SUBJECT TO CHANGE FROM TIME TO TIME.** For the fullest, most current information on proper application, clean-up, mixing and other specifications and warranties, cautions and disclaimers, please refer to the Sto Corp. website, www.stocorp.com.

Sto BTS® Plus

80727 Sto BTS Plus

**Technical Data**

REPORT	TEST METHOD	TEST CRITERIA	TEST RESULTS
Surface Burning	ASTM E-84	< 25 Flame Spread < 450 Smoke Developed	0 5
Adhesion (psi)	ASTM C-297 Modified	28 days	> 30 Gypsum Sheathing* > 15 EPS Board* > 100 Concrete Block > 40 Dens-Glass® Gold** > 100 Concrete
Impact Strength	EIMA 101.86	Standard Impact Classification	Pass

* Failure of substrate

** Dens-Glass Gold is a registered trademark of the G-P Gypsum Corp.

Sto BTS Plus is a one-component, polymer-modified, cement based, dry powder material used as an adhesive and base coat in Sto Wall Claddings, including StoTherm ci Classic and StoTherm ci Lotusan Systems. It is specially designed to provide for the recommended minimum 1/16" base coat thickness in a single application.

Coverage

"Through the wall": 55-75 ft² (5.1-7.0 m²) per bag (when used for both adhesive and base coat applications).

As an adhesive over sheathing and smooth masonry:
90-135 ft² (8.4-12.5 m²) per bag, applied with a 1/2" x 1/2" (13 mm x 13 mm) U-notched trowel having 2" (51 mm) spread between notches.

As an adhesive over rough or uneven masonry:
30-45 ft² (2.8-4.2 m²) per bag, applied with a 5/8" x 5/8" (16 mm x 16 mm) square-notched trowel having 5/8" (16 mm) spread between notches.

As a base coat: 80-125 ft² (7.4-11.6 m²) per bag.

As a skim coat: 90-135 ft² (8.4-12.5 m²) per bag.

Coverage may vary depending on application technique and surface conditions.

Packaging

47 lb. bag (21.3 kg).

Shelf Life

12 months, if protected from moisture and properly stored.

Storage

Store off the ground in a dry area. Protect from direct sunlight, extreme heat [90°F (32°C)], moisture and freezing.

Features	Benefits
1 One-component	Ready to use; easily mixed with water on the job site
2 Polymer-modified	Excellent adhesion; increases durability and freeze/thaw resistance
3 High polymer/cement ratio	Improved flexural strength; resists cracking
4 Creamy smooth consistency	Trowels easily; increases job site productivity
5 Vapor permeable	Allows substrate to breathe naturally; resists blisters caused by trapped vapor
6 High build	Labor savings; can be applied to 1/16" (1.6 mm) thickness in one application with standard reinforcing mesh
7 Factory blended Portland cement	Assures performance mix ratio
8 Low cement ratio	Less alkalinity, less free lime, less efflorescence
9 Bagged powder product	Less solid waste than pails; freezing protection not required prior to mixing

Surface Preparation**As an adhesive**

StoGuard® Air/Moisture Barrier: ensure surface is clean, dry and free of surface contamination. Install StoTherm ci insulation board with adhesive within 30 days of the application of Sto Gold Coat, or clean the surface and recoat with Sto Gold Coat.

Concrete or Masonry: surfaces must be clean, dry and free of frost, damage and all bond-inhibiting materials, including dirt, efflorescence, laitance, form oil and other foreign matter. Loose or damaged material must be removed by water blasting, sandblasting or mechanical wire brushing and repaired. Avoid application over irregular surfaces. Resurface, patch or level surfaces to required tolerance and smoothness with appropriate Sto leveling materials. Refer to ASTM D-4258 and ASTM D-4261 for complete details on preparing cementitious substrates for coatings.

Sto BTS® Plus

Surface Preparation cont.

Glass Mat Gypsum Sheathing in Compliance with ASTM C 1177: ensure surface is clean, dry and free of surface contamination. Sheathing must be installed and protected in accordance with manufacturer's and building code requirements. Remove and replace weather-damaged sheathing. Avoid application over irregular, out of plane surfaces. Install StoTherm ci insulation board with adhesive within 30 days of installation of the sheathing.

As a base coat

StoTherm ci Insulation Board: insulation must be rasped and free of all bond inhibiting materials. **Concrete or Masonry:** surfaces must be clean, dry and free of frost, damage and all bond-inhibiting materials, including dirt, efflorescence, laitance, form oil and other foreign matter. Loose or damaged material must be removed by water blasting, sandblasting or mechanical wire brushing and repaired.

Mixing

Use 5-6.5 quarts (4.7-6.2 L) of water per 47 lb. bag (21.3 kg). Mix automatically using Sto's S-25 Continuous Mixer, or mix manually by adding one 47 lb. (21.3 kg) bag of Sto BTS Plus to 5-6.5 quarts (4.7-6.2 L) of clean, potable water in a clean mixing pail. Mix with a clean, rust-free electric drill and paddle.

Allow to set approximately five minutes, adjust mix if necessary by adding up to 12 fl. oz. (0.35 L) of water per bag, remix to a uniform consistency. Avoid retempering after mixing of product. Do not exceed maximum amount of water in mix ratio.

Application

Apply only to sound and clean, dry, properly prepared, frost-free surfaces.

As an adhesive: Apply to the back of the insulation board with the appropriate size notched trowel. When using Sto's M-8 Spray pump apply directly onto the substrate. Form uniform ribbons of adhesive parallel to the short dimension of the board so the ribbons are oriented vertically in relation to the plane of the wall. Immediately install the board horizontally with staggered joints and apply firm pressure over the entire board surface. Do not delay installation once adhesive is applied.

As a base coat: Apply with spray equipment such as Sto's M-8 Spray Pump or apply manually with a stainless steel trowel to an approximate thickness of 1/8" (3 mm). Work horizontally or vertically in strips of 40" (1 m) and immediately embed Sto Mesh in the wet Sto BTS Plus by troweling from the center to the edges of the mesh. Avoid wrinkles in the mesh and smooth the base coat to eliminate trowel marks. Minimum recommended thickness of the reinforced base coat is 1/16" (1.6 mm) when dry. Reapply

additional base coat if necessary to achieve minimum thickness as soon as the first application is dry.

As a skim coat: Apply in one application to a maximum thickness of 1/16" (1.6 mm) to the prepared surface and smooth the surface.

Curing/Drying

Dries within 24 hours under normal drying conditions [70°F (21°C), 50% RH]. Allow additional drying time during cold, humid, or wet weather until insulation board is fully adhered before rasping, and before application of primer or finish to hardened Sto BTS Plus. Protect from rain and freezing until completely dry.

Sto recommends priming using the appropriate Sto Primer prior to application of finish.

Clean Up

Clean tools and equipment with water immediately after use. Dried material can only be removed mechanically.

Health And Safety

Health Precaution

Contains Portland cement and crystalline silica. Avoid breathing dust. As with any chemical construction product, exercise care when handling.

DANGER!

Causes serious eye damage and/or skin irritation. May cause an allergic skin reaction, respiratory irritation, drowsiness or dizziness.

Safety Precaution

Wash hands thoroughly after handling. Wear protective gloves/protective clothing/eye protection/face protection.

First Aid: EYE CONTACT:

Immediately flush eyes with plenty of water for at least 15 to 20 minutes. Ensure adequate flushing of the eyes by separating the eye lids with fingers. Get immediate medical attention. **SKIN CONTACT:** Immediately wash skin with plenty of soap and water for at least 15 to 20 minutes, while removing contaminated clothing and shoes. Get medical attention if irritation develops or persists. **INHALATION:** If inhaled, remove to fresh air. If not breathing give artificial respiration or give oxygen by trained personnel. Seek medical attention immediately. **INGESTION:** If swallowed, do NOT induce vomiting. Call a physician or a poison control center immediately. Never give anything by mouth to an unconscious person.

Spills

Collect in an appropriate container. Uncured material may be removed with water.

Disposal

Dispose of in accordance with local, state or federal regulations.

Warning

KEEP CONTAINER CLOSED WHEN NOT IN USE. KEEP OUT OF THE REACH OF CHILDREN. NOT FOR INTERNAL CONSUMPTION. FOR INDUSTRIAL USE ONLY. Consult the Safety Data Sheet for further health and safety information.

Safety Data Sheet (SDS) is available at www.stocorp.com

LIMITED WARRANTY

This product is subject to a written limited warranty which can be obtained free of charge from Sto Corp.

Refer to *Sto Specifications for more complete information on proper use and handling of this product.*

Limitations

- Use Sto BTS Plus only when surface and ambient temperatures are above 40°F (4°C) during application and drying period.
- Sto BTS Plus should not be used on weather-exposed horizontal or below grade surfaces or where immersion in water may occur.
- Sloped surfaces: Refer to Sto details.
- Sto BTS Plus should not be used as a finish coating. It should not be used over wood surfaces except for wood sheathing surfaces protected with StoGuard®.
- Prevent rapid loss of moisture from exposure to direct sun, wind and high temperatures.

Sto Corp.
3800 Camp Creek Parkway
Building 1400, Suite 120
Atlanta, GA 30331

Tel: 404-346-3666
Toll Free: 1-800-221-2397
Fax: 404 346-3119

www.stocorp.com

S155-80727
Revision: A3.1
Date: 04/2018

Attention

This product is intended for use by qualified professional contractors, not consumers, as a component of a larger construction assembly as specified by a qualified design professional, general contractor or builder. It should be installed in accordance with those specifications and Sto's instructions. Sto Corp. disclaims all, and assumes no, liability for on-site inspections, for its products applied improperly, or by unqualified persons or entities, or as part of an improperly designed or constructed building, for the nonperformance of adjacent building components or assemblies, or for other construction activities beyond Sto's control. Improper use of this product or use as part of an improperly designed or constructed larger assembly or building may result in serious damage to this product, and to the structure of the building or its components. **STO CORP. DISCLAIMS ALL WARRANTIES EXPRESSED OR IMPLIED EXCEPT FOR EXPLICIT LIMITED WRITTEN WARRANTIES ISSUED TO AND ACCEPTED BY BUILDING OWNERS IN ACCORDANCE WITH STO'S WARRANTY PROGRAMS WHICH ARE SUBJECT TO CHANGE FROM TIME TO TIME.** For the fullest, most current information on proper application, clean-up, mixing and other specifications and warranties, cautions and disclaimers, please refer to the Sto Corp. website, www.stocorp.com.