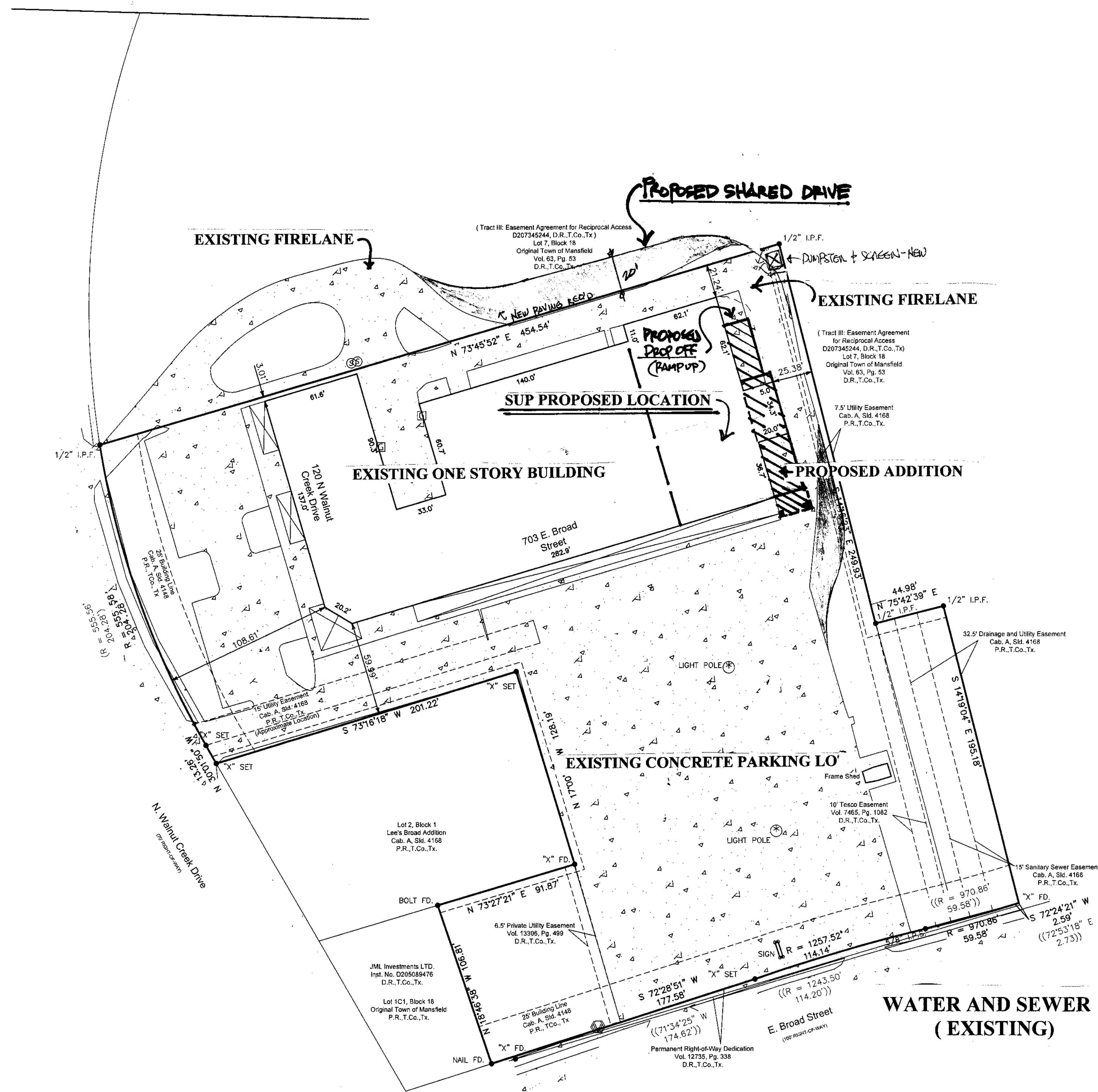


ORIGINAL



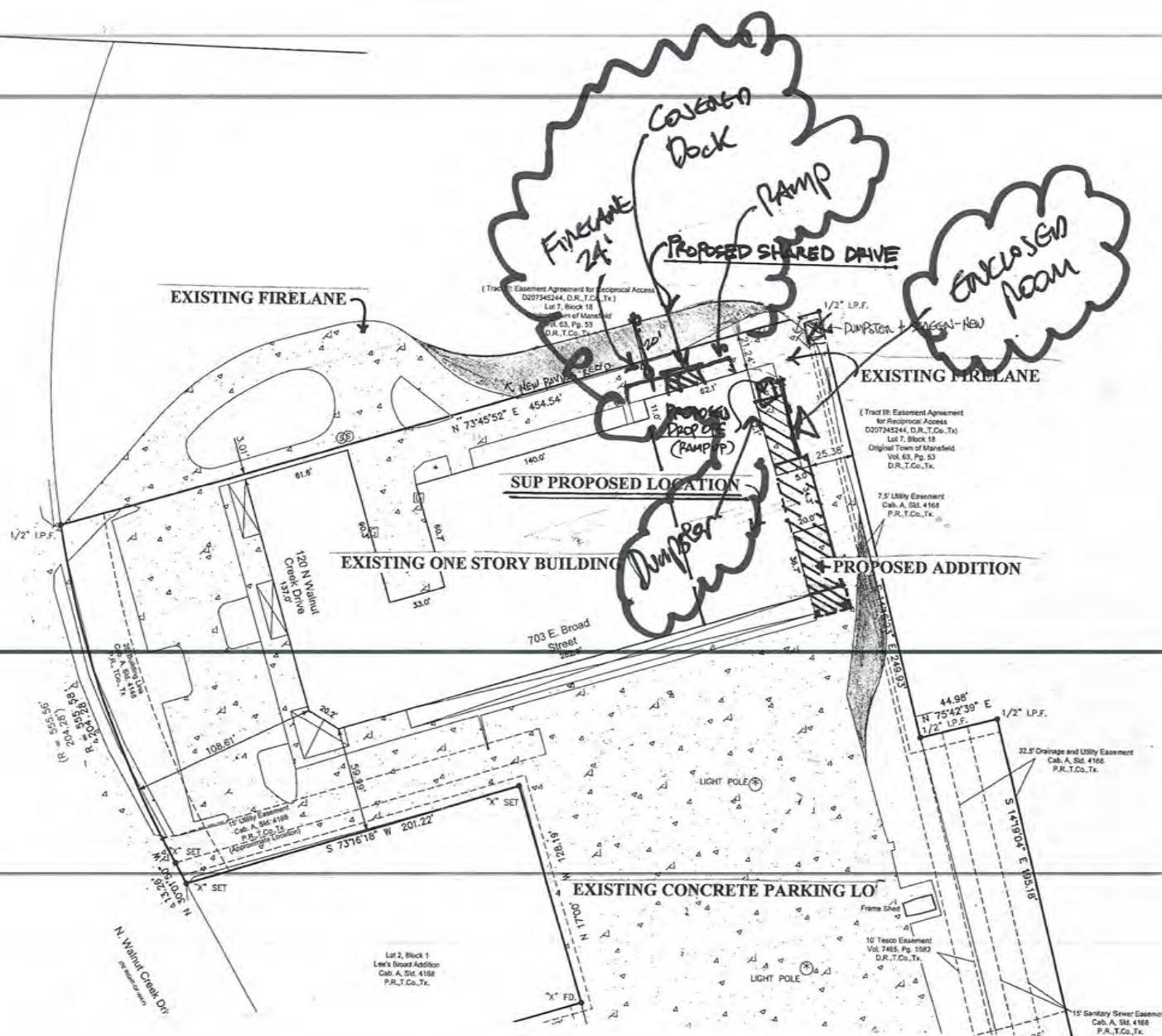
Original Scale : 1" = 40'
Graphic Scale in Feet

WESLEY MISSION CENTER
120 NORTH WALNUT CREEK, SUITE 103, MANSFIELD, TEXAS 76063

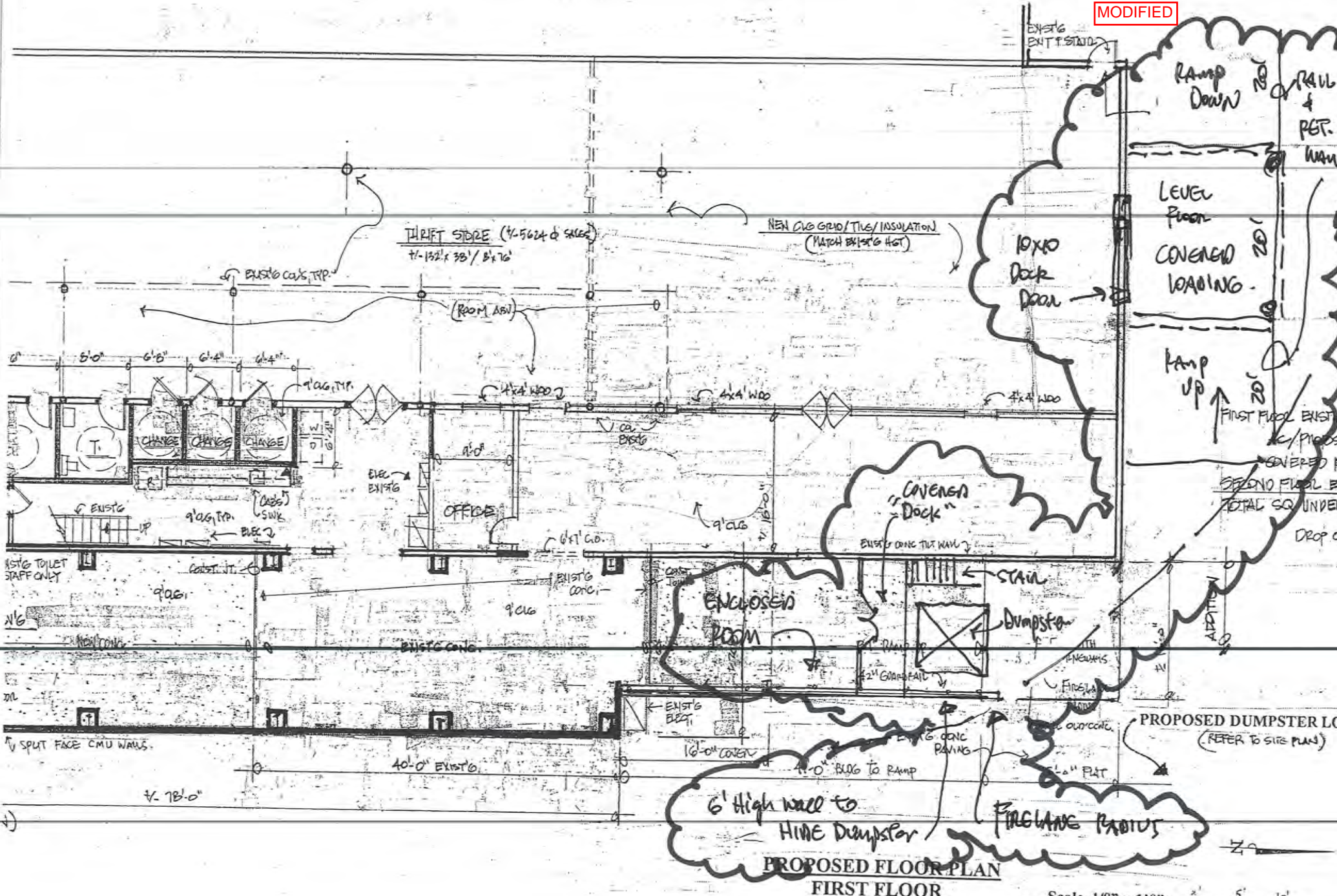
Grossman
Design Build
911 E. Broad St., #120A
Mansfield, Tx. 76063

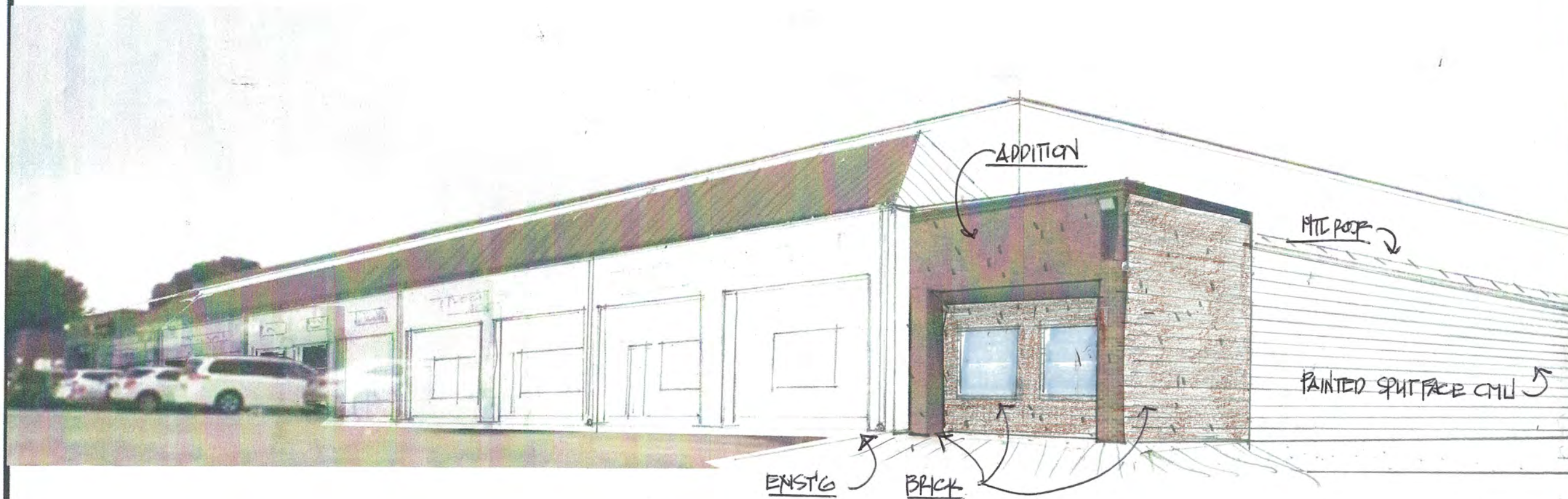
Exhibit B- Site Plan ZC #16-005
Wesley Mission Center
Lot 1R, Block 1 Lee's Broad Addition
Tarrant County, Mansfield Texas 76063
120 N. Walnut Creek, suite 103,

MODIFIED



EXISTG
ENTR STAIR





ORIGINAL -
NO CHANGE IN THE
FRONT FACADE

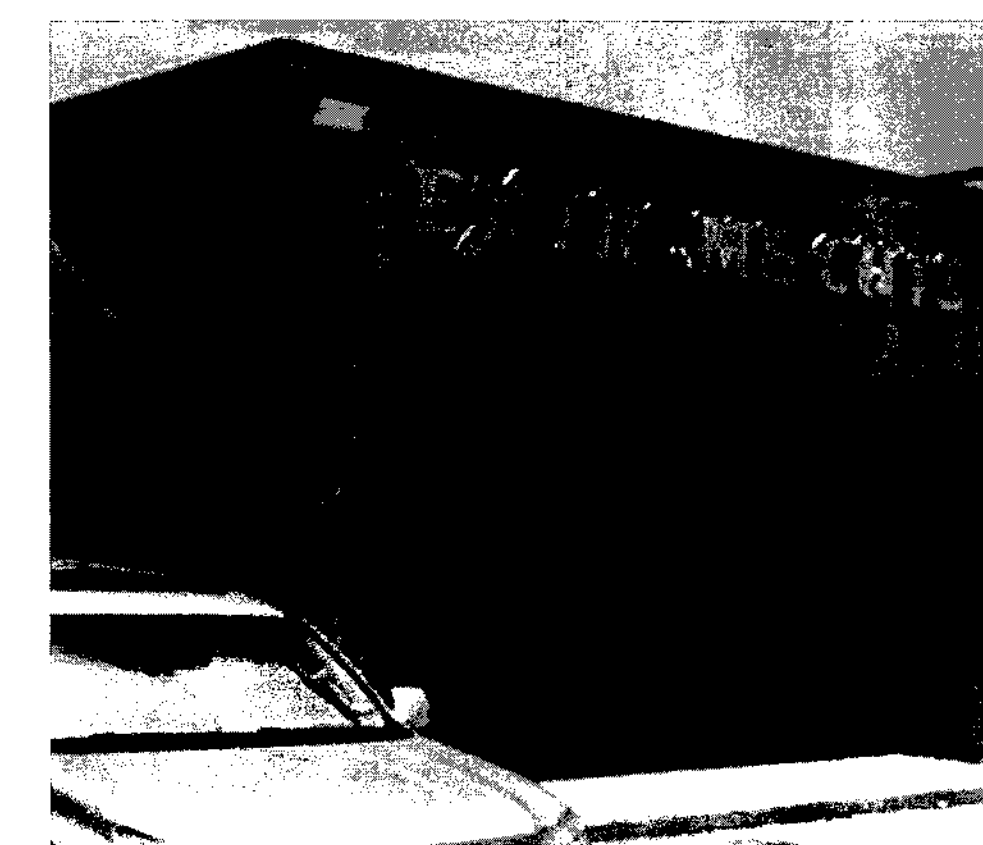
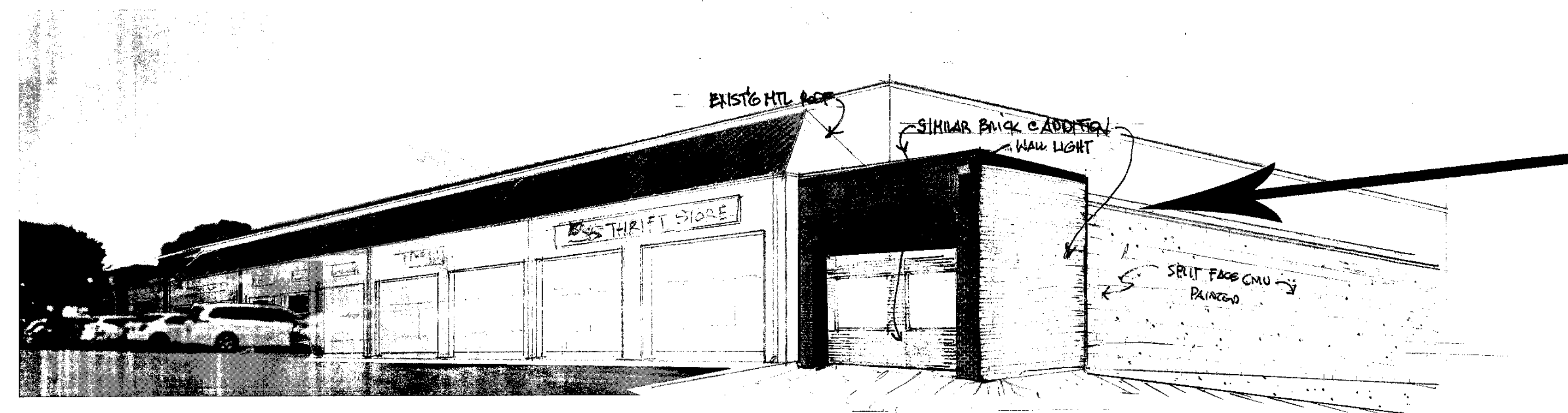
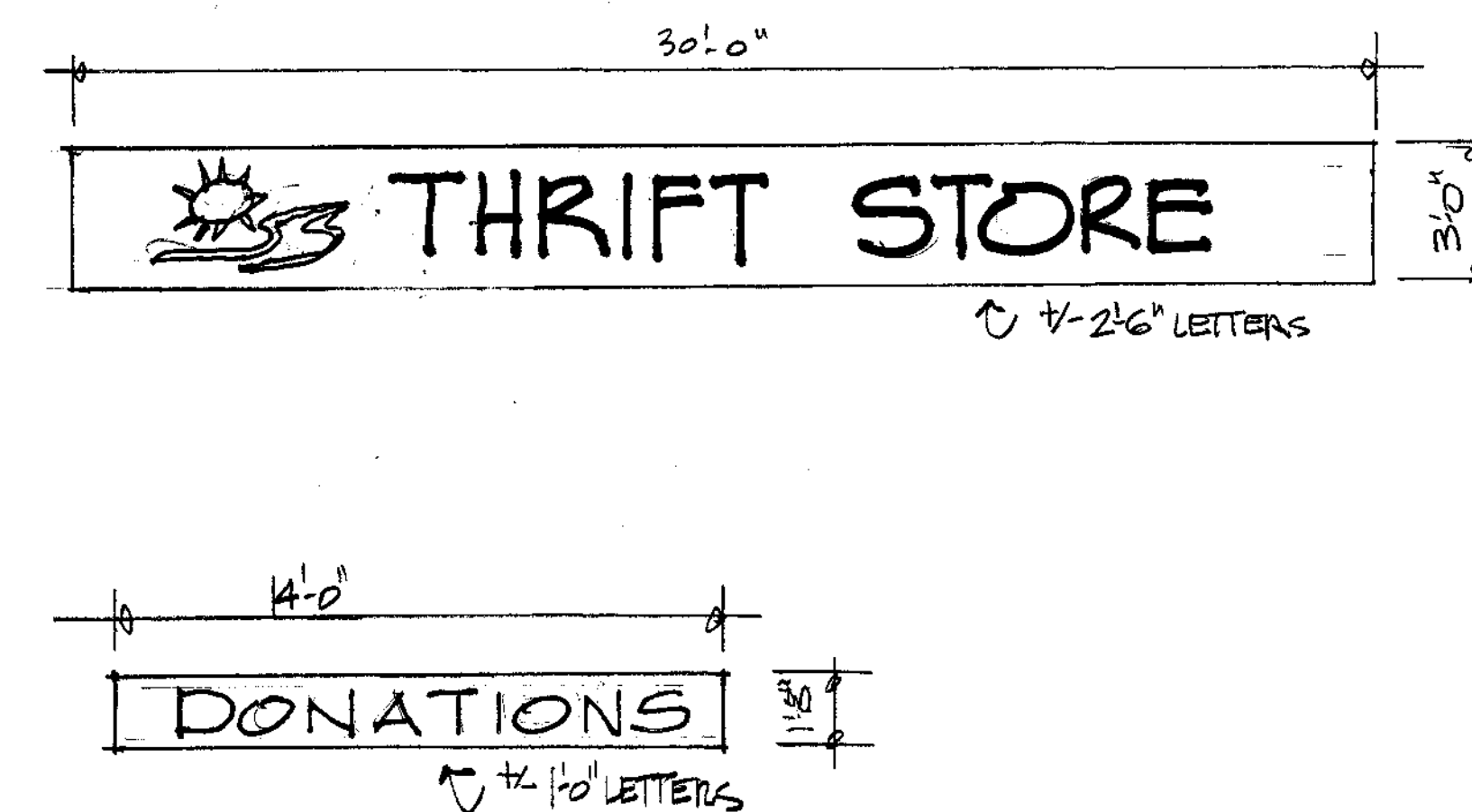
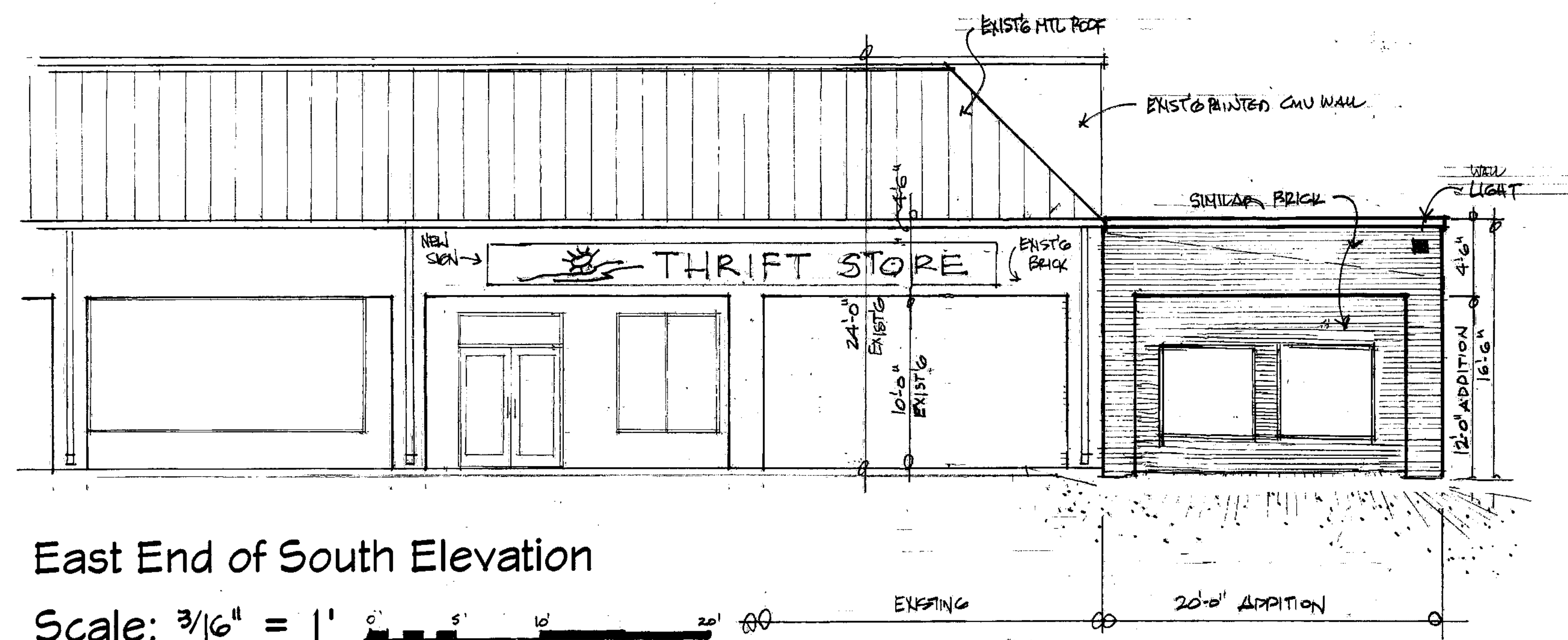
WESLEY MISSION CENTER

120 North Walnut Creek, Suite 103 , Mansfield, Texas 76063

Grossman Design Build
411 E. Broad Street,
Mansfield, TX 76063
817-473-9168

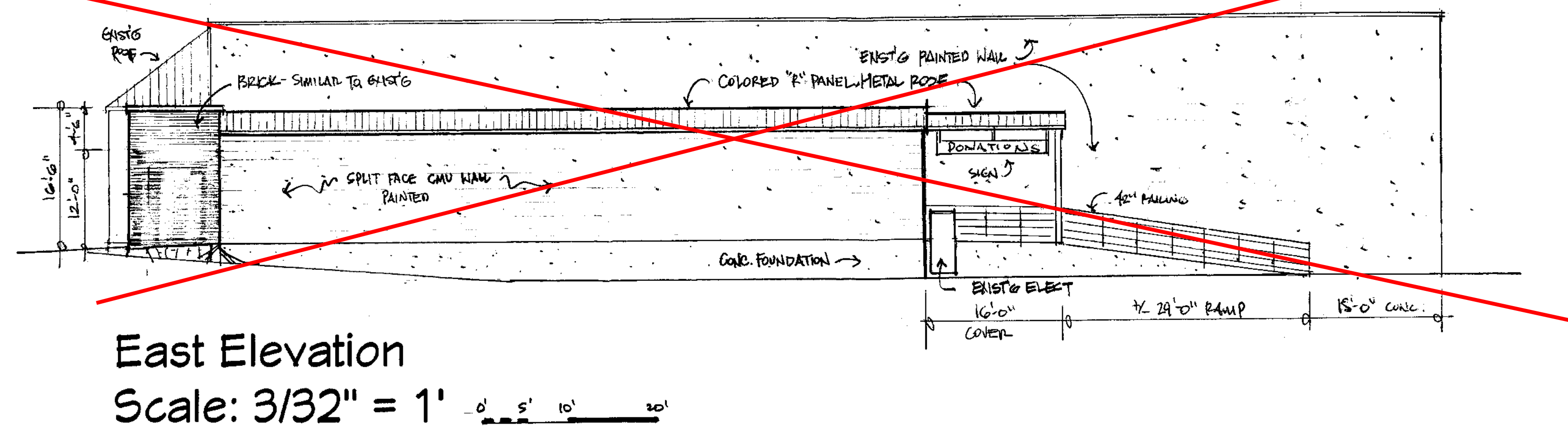
Exhibit D- Colored Rendering ZC #16-005
Development Plan, Wesley Mission Center
Lot 1R, Block 1 Lee's Broad Addition
Tarrant County, Mansfield Texas 76063
120 N. Walnut Creek, suite 103

ORIGINAL



Existing Building, New Addition
will Mirror Existing Facade

REPLACED BY NEXT PAGE



WESLEY MISSION CENTER

Grossman
Design Build
911 E. Broad St. #120A
Mansfield, Tx. 76063

Exhibit C- Elevations 7C #16-005
Development Plan, Wesley Mission Center
Lot 1R, Block 1 Lee's Broad Addition
Tarrant County, Mansfield Texas 76063
120 N. Walnut Creek, suite 103

MODIFIED

