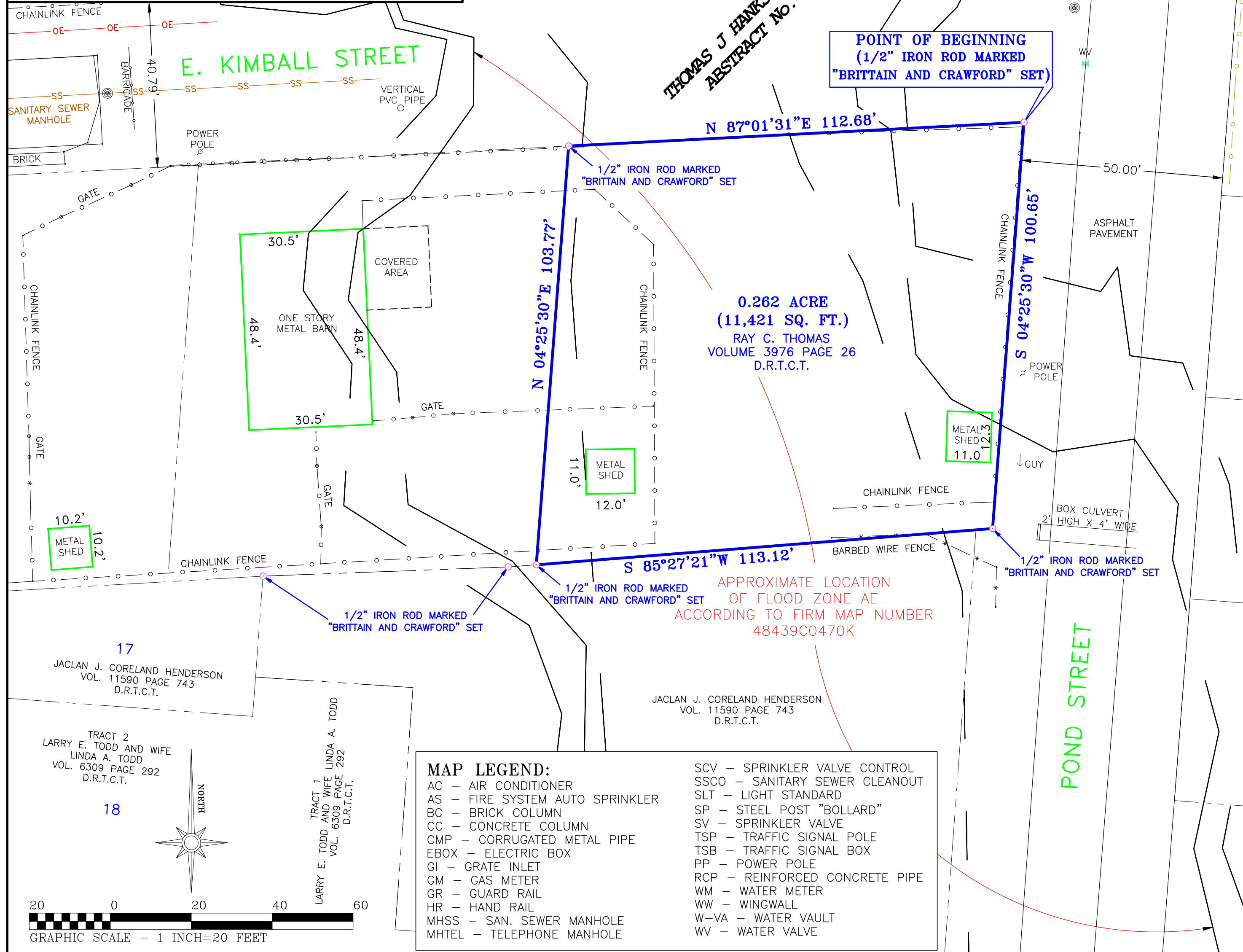
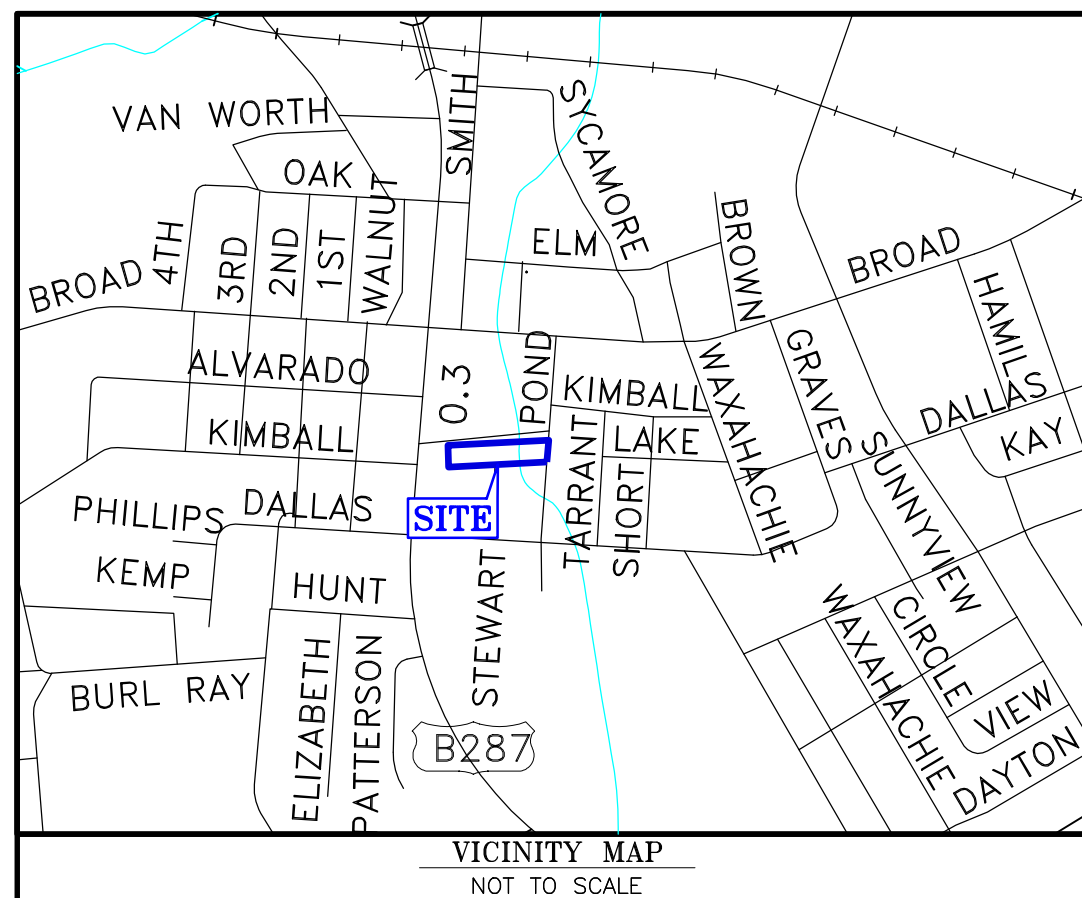


FLOOD NOTE:

NO PORTION OF THIS PROPERTY LIES WITHIN A 100-YEAR FLOOD HAZARD ZONE, ACCORDING TO THE NATIONAL FLOOD INSURANCE PROGRAM'S FLOOD INSURANCE RATE MAP FOR TARRANT COUNTY, TEXAS, AND INCORPORATED AREAS, COMMUNITY-PANEL NUMBER 48439C0190K, MAP REVISED SEPTEMBER 25, 2009.

BEARING BASIS NOTE:

THE BEARINGS INDICATED HEREON ARE BASED UPON OUR FIELD SURVEYED ANGLES RELATED TO THE ORIGINAL RECORDED PLAT OF THIS LOT



MAP LEGEND:

AC - AIR CONDITIONER	SCV - SPRINKLER VALVE CONTROL
AS - FIRE SYSTEM AUTO SPRINKLER	SSCO - SANITARY SEWER CLEANOUT
BC - BRICK COLUMN	SLT - LIGHT STANDARD
CC - CONCRETE COLUMN	SP - STEEL POST "BOLLARD"
CMP - CORRUGATED METAL PIPE	SV - SPRINKLER VALVE
EBOX - ELECTRIC BOX	TSP - TRAFFIC SIGNAL POLE
GI - GRATE INLET	TSB - TRAFFIC SIGNAL BOX
GM - GAS METER	PP - POWER POLE
GR - GUARD RAIL	RCP - REINFORCED CONCRETE PIPE
HR - HAND RAIL	WM - WATER METER
MHSS - SAN. SEWER MANHOLE	WW - WINGWALL
MHTEL - TELEPHONE MANHOLE	W-VA - WATER VAULT
	WV - WATER VALVE

BOUNDARY SURVEY MAP
 OF
0.262 ACRE OF LAND
 LOCATED IN THE
THOMAS J. HANKS SURVEY
 ABSTRACT No. 644
 CITY OF MANSFIELD, TARRANT COUNTY,
 TEXAS