

**EXHIBIT "A"**  
**ZONING DESCRIPTION**  
**275.565 ACRES**

BEING A 275.565 ACRE TRACT OF LAND SITUATED IN THE SM KEMP SURVEY, ABSTRACT NO. 492, THE M.D. DICKEY SURVEY, ABSTRACT NO. 195, THE JOHN HENDERSON SURVEY, ABSTRACT NO. 362, THE RB&FA ENGLISH SURVEY, ABSTRACT NO. 254, THE RA DAVIS SURVEY, ABSTRACT NO. 231, AND THE JOSEPH C GUEST SURVEY, ABSTRACT NO. 311, JOHNSON COUNTY, TEXAS, AND BEING ALL OF A CALLED 266.949 ACRE TRACT, CONVEYED TO SET/BACK PARTNERS, AS RECORDED IN VOLUME 2226, PAGE 464, OFFICIAL PUBLIC RECORDS, JOHNSON COUNTY, TEXAS, AND BEING A PORTION OF A CALLED 45.022 ACRE TRACT AND A CALLED 121.42 ACRE TRACT, CONVEYED TO SET/BACK PARTNERS, AS RECORDED IN VOLUME 2241, PAGE 33, AND VOLUME 2207, PAGE 816, RESPECTIVELY, SAID COUNTY RECORDS, AND BEING ALL OF TRACT ONE, A CALLED 12.650 ACRE TRACT, CONVEYED TO MANSFIELD INDEPENDENT SCHOOL DISTRICT, AS RECORDED IN VOLUME 3858, PAGE 567, SAID COUNTY RECORDS.

**BEGINNING** AT THE SOUTHEASTERLY CORNER OF SAID 266.949 ACRE TRACT AND BEING ON THE NORTHWESTERLY RIGHT-OF-WAY LINE OF F.M. 917, A VARIABLE WIDTH RIGHT-OF-WAY;

THENCE, ALONG THE SOUTHEAST, SOUTHWEST AND NORTHWEST LINES OF SAID 266.949 ACRE TRACT, THE FOLLOWING COURSES AND DISTANCES:

SOUTH 62 DEGREES 08 MINUTES 48 SECONDS WEST, A DISTANCE OF 1,646.86 FEET TO A POINT FOR THE SOUTH CORNER OF SAID 266.949 ACRE TRACT;

NORTH 32 DEGREES 32 MINUTES 43 SECONDS WEST, A DISTANCE OF 2,083.63 FEET TO A POINT FOR A WEST CORNER OF SAID 266.949 ACRE TRACT;

NORTH 00 DEGREES 49 MINUTES 44 SECONDS WEST, A DISTANCE OF 293.00 FEET TO A POINT FOR A WEST CORNER OF SAID 266.949 ACRE TRACT;

NORTH 29 DEGREES 37 MINUTES 55 SECONDS WEST, A DISTANCE OF 1,640.62 FEET TO A POINT FOR A WEST CORNER OF SAID 266.949 ACRE TRACT;

NORTH 60 DEGREES 46 MINUTES 18 SECONDS EAST, A DISTANCE OF 1,719.05 FEET TO A POINT FOR THE NORTHERN MOST WEST CORNER OF SAID 266.949 ACRE TRACT;

SOUTH 29 DEGREES 13 MINUTES 50 SECONDS EAST, A DISTANCE OF 863.24 FEET TO A POINT FOR AN INTERIOR ELL CORNER OF SAID 266.949 ACRE TRACT;

NORTH 60 DEGREES 46 MINUTES 02 SECONDS EAST, A DISTANCE OF 2,386.02 FEET TO A POINT FOR CORNER IN THE CENTERLINE OF OLD F.M. 917, A 100' RIGHT-OF-WAY;

THENCE, NORTH 07 DEGREES 51 MINUTES 10 SECONDS WEST, ALONG SAID CENTERLINE, A DISTANCE OF 157.69 FEET TO A POINT FOR CORNER;

THENCE, SOUTH 82 DEGREES 57 MINUTES 10 SECONDS EAST, DEPARTING SAID CENTERLINE AND ALONG THE NORTHERLY LINE AFORESAID 121.42 ACRE TRACT, A DISTANCE OF 445.83 FEET TO A POINT FOR CORNER ON THE WESTERLY RIGHT-OF-WAY LINE OF SAID F.M. 917;

THENCE, DEPARTING SAID NORTHERLY LINE, ALONG SAID WESTERLY RIGHT-OF-WAY LINE, THE FOLLOWING COURSES AND DISTANCES;

SOUTH 09 DEGREES 43 MINUTES 21 SECONDS WEST, OVER AND ACROSS SAID 121.42 ACRE TRACT AND AFORESAID 45.022 ACRE, A DISTANCE OF 1,542.23 FEET TO A POINT FOR CORNER;

SOUTH 89 DEGREES 13 MINUTES 03 SECONDS WEST, A DISTANCE OF 77.00 FEET TO A POINT FOR CORNER AT THE BEGINNING OF A NON-TANGENT CURVE TO THE RIGHT, HAVING A CENTRAL ANGLE OF 08 DEGREES 13 MINUTES 32 SECONDS, A RADIUS OF 4,506.66 FEET, AND A LONG CHORD THAT BEARS, SOUTH 03 DEGREES 19 MINUTES 49 SECONDS WEST, A DISTANCE OF 646.44 FEET;

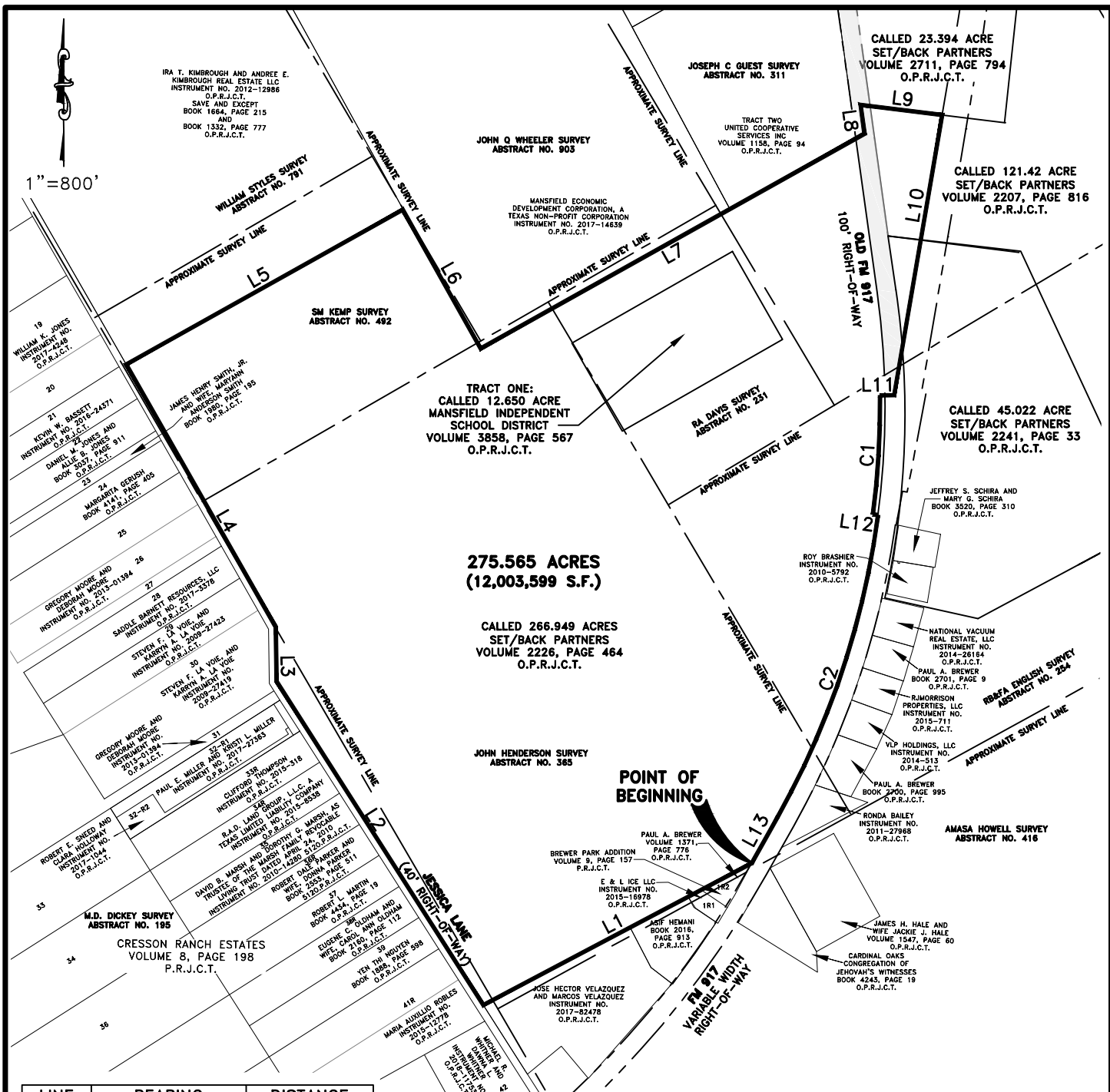
ALONG SAID NON-TANGENT CURVE TO THE RIGHT, AN ARC DISTANCE OF 647.00 FEET TO A POINT FOR CORNER;

SOUTH 82 DEGREES 33 MINUTES 25 SECONDS EAST, A DISTANCE OF 27.54 FEET TO A POINT FOR CORNER ON THE COMMON LINE OF SAID F.M.917 AND AFOREMENTIONED 266.949 ACRE TRACT, AND BEING THE BEGINNING OF A NON-TANGENT CURVE TO THE RIGHT, HAVING A CENTRAL ANGLE OF 21 DEGREES 58 MINUTES 04 SECONDS, A RADIUS OF 4,533.66 FEET, AND A LONG CHORD THAT BEARS, SOUTH 18 DEGREES 24 MINUTES 08 SECONDS WEST, A DISTANCE OF 1,727.63 FEET;

THENCE, ALONG SAID COMMON LINE AND NON-TANGENT CURVE TO THE RIGHT, AN ARC DISTANCE OF 1,738.26 FEET TO A POINT FOR CORNER;

THENCE, SOUTH 29 DEGREES 10 MINUTES 34 SECONDS WEST, CONTINUING ALONG SAID COMMON LINE, A DISTANCE OF 285.77 FEET TO THE **POINT OF BEGINNING** AND CONTAINING A CALCULATED AREA OF 12,003,599 SQUARE FEET OR 275.565 ACRES OF LAND.

**THIS DOCUMENT WAS PREPARED UNDER 22 TAC 663.21, DOES NOT REFLECT THE RESULTS OF AN ON THE GROUND SURVEY, AND IS NOT TO BE USED TO CONVEY OR ESTABLISH INTERESTS IN REAL PROPERTY EXCEPT THOSE RIGHTS AND INTERESTS IMPLIED OR ESTABLISHED BY CREATION OR RECONFIGURATION OF THE POLITICAL SUBDIVISION FOR WHICH IT WAS PREPARED.**



LINE	BEARING	DISTANCE
L1	S62°08'48"W	1,646.86'
L2	N32°32'43"W	2,083.63'
L3	N00°49'44"W	293.00'
L4	N29°37'55"W	1,640.62'
L5	N60°46'18"E	1,719.05'
L6	S29°13'50"E	863.24'
L7	N60°46'02"E	2,386.02'

LINE	BEARING	DISTANCE
L8	N07°51'10"W	157.69'
L9	S82°57'10"E	445.83'
L10	S09°43'21"W	1,542.23'
L11	S89°13'03"W	77.00'
L12	S82°33'25"E	27.54'
L13	S29°10'34"W	285.77'

CURVE	CENTRAL ANGLE	RADIUS	CHORD BEARING	CHORD LENGTH	ARC LENGTH
C1	8°13'32"	4,506.66'	S03°19'49"W	646.44'	647.00'
C2	21°58'04"	4,533.66'	S18°24'08"W	1,727.63'	1,738.26'

Drawing: I:\SLD\WFX06900\WFX06950\700 CADD\713 Survey\713.5 Easement\WFX06950ZN01.dwg Saved By: keetonme Save Time: 3/7/2018 2:45 PM

SHEET

3 OF 3

DATE: 03/07/18
SCALE: 1" = 800'
DRAWN BY: ATP
CHECKED BY: MJB

# ZONING EXHIBIT

OUT OF THE  
SM KEMP SURVEY, ABSTRACT NO. 492, THE M.D. DICKEY  
SURVEY, ABSTRACT NO. 195, THE JOHN HENDERSON SURVEY,  
ABSTRACT NO. 362, THE RB&FA ENGLISH SURVEY, ABSTRACT  
NO. 254, THE RA DAVIS SURVEY, ABSTRACT NO. 231, AND  
THE JOSEPH C GUEST SURVEY, ABSTRACT NO. 311,  
JOHNSON COUNTY, TEXAS

**JACOBS®**

1999 BRYAN STREET, SUITE 1200  
DALLAS, TEXAS 75201-3136  
PHONE (214)638-0145 FAX (214)638-0447  
TBPLS FIRM REGISTRATION NO. 10152300

**EXHIBIT "A"**  
**ZONING DESCRIPTION**  
**438.884 ACRES**

BEING A 438.884 ACRE TRACT OF LAND SITUATED IN THE ARTHUR GIBSON SURVEY, ABSTRACT NO. 302, THE ELIZABETH MCANIER SURVEY, ABSTRACT NO. 571, THE RB&FA ENGLISH SURVEY, ABSTRACT NO. 254, THE CRAWFORD TREESE SURVEY, ABSTRACT NO. 831, AND THE JOSEPH C GUEST SURVEY, ABSTRACT NO. 311, JOHNSON COUNTY, TEXAS, AND BEING ALL OF A CALLED 110.19 ACRE TRACT, CONVEYED TO SET/BACK PARTNERS, AS RECORDED IN VOLUME 2169, PAGE 160, OFFICIAL PUBLIC RECORDS, JOHNSON COUNTY, TEXAS, AND BEING A PORTION OF A CALLED 45.022 ACRE TRACT, A CALLED 121.42 ACRE TRACT, A CALLED 23.394 ACRE TRACT A CALLED 10.616 ACRE TRACT, A CALLED 160.55 ACRE TRACT AND A CALLED 47.551 ACRE TRACT, CONVEYED TO SET/BACK PARTNERS, AS RECORDED IN VOLUME 2241, PAGE 33, VOLUME 2207, PAGE 816, VOLUME 2711, PAGE 794, VOLUME 2711, PAGE 777, VOLUME 2215, PAGE 648 AND VOLUME 2555, PAGE 254, RESPECTIVELY, SAID COUNTY RECORDS, AND BEING ALL OF THE REMAINDER OF A CALLED 160.396 ACRE TRACT, CONVEYED TO ALVEY REALTY COMPANY, INC., TRUSTEE, AS RECORDED IN VOLUME 1136, PAGE 351, SAID COUNTY RECORDS.

**BEGINNING** AT THE MOST WESTERLY SOUTHWEST CORNER OF SAID 110.19 ACRE TRACT AND BEING ON THE EASTERLY LINE OF SAID 121.42 ACRE TRACT;

THENCE, SOUTH 29 DEGREES 42 MINUTES 45 SECONDS EAST, ALONG SAID EASTERLY LINE, A DISTANCE OF 1,498.21 FEET TO THE SOUTHEAST CORNER OF SAID 121.42 ACRE TRACT;

THENCE, SOUTH 59 DEGREES 38 MINUTES 03 SECONDS WEST, ALONG THE SOUTHERLY LINE OF SAID 121.42 ACRE TRACT, A DISTANCE OF 1,278.01 FEET TO THE SOUTHWEST CORNER;

THENCE, NORTH 23 DEGREES 57 MINUTES 00 SECONDS WEST, ALONG THE WESTERLY LINE OF SAID TRACT, A DISTANCE OF 507.93 FEET TO A POINT FOR CORNER IN THE SOUTHERLY LINE OF AFORESAID 45.022 ACRE TRACT;

THENCE, SOUTH 61 DEGREES 52 MINUTES 28 SECONDS WEST, ALONG THE SOUTHERLY LINE, A DISTANCE OF 402.95 FEET TO A POINT AT THE NORTHEAST CORNER OF A CALLED 7.00 ACRE SAVE AND EXCEPT TRACT AS RECORDED IN SAID VOLUME 2241, PAGE 33;

THENCE, NORTH 77 DEGREES 30 MINUTES 50 SECONDS WEST, ALONG THE NORTH LINE OF SAID SAVE AND EXCEPT TRACT, A DISTANCE OF 970.84 FEET TO A POINT FOR CORNER ON THE EASTERLY RIGHT-OF-WAY LINE OF F.M. 917, A VARIABLE WIDTH RIGHT-OF-WAY;

THENCE, ALONG SAID RIGHT-OF-WAY LINE, OVER AND ACROSS SAID 45.022 ACRE TRACT AND AFORESAID 121.42 ACRE, 23.394 ACRE, 10.616 ACRE AND 160.55 ACRE TRACTS, THE FOLLOWING COURSES AND DISTANCES:

NORTH 10 DEGREES 24 MINUTES 02 SECONDS EAST, A DISTANCE OF 187.07 FEET TO A POINT FOR CORNER;

SOUTH 79 DEGREES 35 MINUTES 58 SECONDS EAST, A DISTANCE OF 25.00 FEET TO A POINT FOR CORNER;

NORTH 10 DEGREES 24 MINUTES 02 SECONDS EAST, A DISTANCE OF 543.54 FEET TO A POINT FOR CORNER;

NORTH 79 DEGREES 35 MINUTES 58 SECONDS WEST, A DISTANCE OF 25.00 FEET TO A POINT FOR CORNER;

NORTH 09 DEGREES 04 MINUTES 06 SECONDS EAST, A DISTANCE OF 1,872.15 FEET TO A POINT FOR CORNER;

SOUTH 80 DEGREES 55 MINUTES 54 SECONDS EAST, A DISTANCE OF 5.00 FEET TO A POINT FOR CORNER AT THE BEGINNING OF A NON-TANGENT CURVE TO THE LEFT, HAVING A CENTRAL ANGLE OF 08 DEGREES 48 MINUTES 01 SECONDS, A RADIUS OF 4,348.35 FEET, AND A LONG CHORD THAT BEARS NORTH 05 DEGREES 52 MINUTES 22 SECONDS EAST, A DISTANCE OF 667.22 FEET;

ALONG SAID NON-TANGENT CURVE TO THE LEFT, AN ARC DISTANCE OF 667.88 FEET TO A POINT FOR CORNER;

NORTH 01 DEGREES 19 MINUTES 50 SECONDS EAST, A DISTANCE OF 92.29 FEET TO A POINT FOR CORNER;

NORTH 88 DEGREES 40 MINUTES 10 SECONDS WEST, A DISTANCE OF 5.00 FEET TO A POINT FOR CORNER;

NORTH 01 DEGREES 19 MINUTES 50 SECONDS EAST, A DISTANCE OF 644.39 FEET TO A POINT FOR CORNER AT THE BEGINNING OF A TANGENT CURVE TO THE RIGHT HAVING A CENTRAL ANGLE OF 03 DEGREES 21 MINUTES 12 SECONDS, A RADIUS OF 2,588.72 FEET, AND A LONG CHORD THAT BEARS NORTH 03 DEGREES 00 MINUTES 26 SECONDS EAST A DISTANCE OF 151.49 FEET;

ALONG SAID TANGENT CURVE TO THE RIGHT, AN ARC DISTANCE OF 151.51 FEET TO A POINT FOR CORNER;

SOUTH 85 DEGREES 18 MINUTES 58 SECONDS EAST, A DISTANCE OF 5.00 FEET TO A POINT FOR CORNER AT THE BEGINNING OF A NON-TANGENT CURVE TO THE RIGHT, HAVING A CENTRAL ANGLE OF 01 DEGREES 23 MINUTES 54 SECONDS, A RADIUS OF 2,583.72 FEET, AND A LONG CHORD THAT BEARS NORTH 05 DEGREES 22 MINUTES 59 SECONDS EAST A DISTANCE OF 63.05 FEET;

ALONG SAID NON-TANGENT CURVE TO THE RIGHT, AN ARC DISTANCE OF 63.06 FEET TO THE SOUTHWEST CORNER OF TRACT TWO, A CALLED 20.000 ACRE TRACT

AS CONVEYED TO MANSFIELD INDEPENDENT SCHOOL DISTRICT, RECORDED IN VOLUME 3858, PAGE 567, OFFICIAL PUBLIC RECORDS, JOHNSON COUNTY, TEXAS;

THENCE, DEPARTING SAID RIGHT-OF-WAY LINE, ALONG THE SOUTHERLY, EASTERLY AND NORTHERLY LINES OF SAID 20.000 ACRE TRACT OVER AND ACROSS SAID 160.55 ACRE TRACT AND AFORESAID 47.551 ACRE TRACT THE FOLLOWING COURSES AND DISTANCES:

SOUTH 83 DEGREES 55 MINUTES 16 SECONDS EAST, A DISTANCE OF 680.22 FEET TO THE SOUTHEAST CORNER OF SAID 20.000 ACRE TRACT;

NORTH 21 DEGREES 16 MINUTES 41 SECONDS EAST, A DISTANCE OF 1,017.01 FEET TO THE NORTHEAST CORNER OF SAID 20.000 ACRE TRACT;

NORTH 52 DEGREES 58 MINUTES 47 SECONDS WEST, A DISTANCE OF 680.10 FEET TO THE NORTHWEST CORNER OF SAID 20.000 ACRE TRACT AND RETURNING TO SAID RIGHT-OF-WAY LINE, AND THE BEGINNING OF A NON-TANGENT CURVE TO THE RIGHT HAVING A CENTRAL ANGLE OF 07 DEGREES 49 MINUTES 22 SECONDS, A RADIUS OF 2,588.72 FEET, AND A LONG CHORD THAT BEARS NORTH 40 DEGREES 56 MINUTES 17 SECONDS EAST A DISTANCE OF 353.17 FEET;

THENCE, DEPARTING SAID 20.000 ACRE TRACT, ALONG SAID RIGHT-OF-WAY LINE, OVER AND ACROSS SAID 47.551 ACRE TRACT THE FOLLOWING COURSES AND DISTANCES:

ALONG SAID NON-TANGENT CURVE TO THE RIGHT, AN ARC DISTANCE OF 353.44 FEET TO A POINT FOR CORNER;

NORTH 44 DEGREES 50 MINUTES 58 SECONDS EAST, A DISTANCE OF 270.57 FEET TO A POINT FOR CORNER AT THE BEGINNING OF A TANGENT CURVE TO THE LEFT HAVING A CENTRAL ANGLE OF 09 DEGREES 12 MINUTES 24 SECONDS, A RADIUS OF 4080.00 FEET, AND A LONG CHORD THAT BEARS NORTH 40 DEGREES 14 MINUTES 46 SECONDS EAST A DISTANCE OF 654.91 FEET;

ALONG SAID TANGENT CURVE TO THE LEFT, AN ARC DISTANCE OF 655.61 FEET TO A POINT FOR CORNER AT THE EAST LINE OF A 25' PIPELINE EASEMENT TO EOG RESOURCES AS RECORDED IN VOLUME 3758, PAGE 316, OFFICIAL PUBLIC RECORDS, JOHNSON COUNTY, TEXAS;

THENCE, SOUTH 20 DEGREES 25 MINUTES 51 SECONDS EAST, DEPARTING SAID RIGHT-OF-WAY, ALONG SAID EAST LINE, A DISTANCE OF 320.52 FEET TO A POINT FOR CORNER IN THE EASTERLY LINE OF A 20' PERMANENT PIPELINE EASEMENT AS CONVEYED TO TEXAS MIDSTREAM GAS SERVICES, LLC, RECORDED IN VOLUME 4572, PAGE 107, OFFICIAL PUBLIC RECORDS, JOHNSON COUNTY, TEXAS;

THENCE, DEPARTING SAID EAST LINE, ALONG SAID EASTERLY LINE THE FOLLOWING COURSES AND DISTANCES:



SOUTH 59 DEGREES 28 MINUTES 02 SECONDS EAST, A DISTANCE OF 73.28 FEET TO A POINT FOR CORNER;

SOUTH 21 DEGREES 04 MINUTES 26 SECONDS EAST, A DISTANCE OF 117.03 FEET TO A POINT FOR CORNER ON THE SOUTH LINE OF SAID 47.551 ACRE TRACT;

THENCE, NORTH 60 DEGREES 16 MINUTES 51 SECONDS EAST, ALONG SAID SOUTH LINE, A DISTANCE OF 628.83 FEET TO THE NORTHEAST CORNER OF SAID 160.55 ACRE TRACT;

THENCE, SOUTH 29 DEGREES 22 MINUTES 09 SECONDS EAST, DEPARTING SAID SOUTH LINE, ALONG THE EAST LINE OF SAID 160.55 ACRE TRACT, A DISTANCE OF 2,662.03 FEET TO THE SOUTHEAST CORNER OF SAID TRACT AND BEING THE NORTH LINE SAID REMAINDER OF A CALLED 160.396 ACRE TRACT;

THENCE, NORTH 60 DEGREES 00 MINUTES 44 SECONDS EAST, DEPARTING SAID EAST LINE, ALONG THE SAID NORTH LINE, A DISTANCE OF 973.93 FEET TO THE NORTHWEST CORNER OF A CALLED 78.455 ACRE TRACT CONVEYED TO MANSFIELD INDEPENDENT SCHOOL DISTRICT, RECORDED IN VOLUME 3330, PAGE 422, OFFICIAL PUBLIC RECORDS, JOHNSON COUNTY, TEXAS;

THENCE, DEPARTING SAID NORTH LINE, ALONG THE WESTERLY LINE OF SAID 78.455 ACRE TRACT THE FOLLOWING COURSES AND DISTANCES:

SOUTH 30 DEGREES 01 MINUTES 28 SECONDS EAST, A DISTANCE OF 844.43 FEET TO A POINT FOR CORNER;

SOUTH 14 DEGREES 58 MINUTES 32 SECONDS WEST, A DISTANCE OF 127.01 FEET TO A POINT FOR CORNER;

SOUTH 30 DEGREES 01 MINUTES 28 SECONDS EAST, A DISTANCE OF 329.11 FEET TO THE NORTHEAST CORNER OF A CALLED 41.00 ACRE TRACT CONVEYED TO MANSFIELD INDEPENDENT SCHOOL DISTRICT, RECORDED IN VOLUME 857, PAGE 272, OFFICIAL PUBLIC RECORDS, JOHNSON COUNTY, TEXAS;

THENCE, SOUTH 59 DEGREES 30 MINUTES 02 SECONDS WEST, DEPARTING SAID WEST LINE, ALONG THE NORTH LINE OF SAID 41.00 ACRE TRACT, A DISTANCE OF 1,296.50 FEET TO THE NORTHWEST CORNER OF SAID 41.00 ACRE TRACT AND ON THE WEST LINE OF AFOREMENTIONED 110.19 ACRE TRACT;

THENCE, ALONG THE EASTERLY, SOUTHERLY AND WESTERLY LINES THE FOLLOWING COURSES AND DISTANCE:

SOUTH 29 DEGREES 58 MINUTES 00 SECONDS EAST, A DISTANCE OF 1377.17 FEET TO THE SOUTHEAST CORNER OF SAID 110.19 ACRE TRACT;

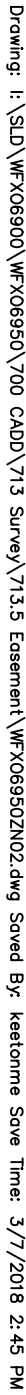
SOUTH 60 DEGREES 28 MINUTES 01 SECONDS WEST, A DISTANCE OF 1,263.70 FEET TO THE MOST SOUTHERLY SOUTHWEST CORNER OF SAID TRACT;

NORTH 29 DEGREES 42 MINUTES 45 SECONDS WEST, A DISTANCE OF 1,501.02 FEET TO AN INTERIOR ELL CORNER OF SAID TRACT;

SOUTH 60 DEGREES 23 MINUTES 42 SECONDS WEST, A DISTANCE OF 1,384.07 FEET TO THE **POINT OF BEGINNING** AND CONTAINING A CALCULATED AREA OF 19,117,788 SQUARE FEET OR 438.884 ACRES OF LAND.

**THIS DOCUMENT WAS PREPARED UNDER 22 TAC 663.21, DOES NOT REFLECT THE RESULTS OF AN ON THE GROUND SURVEY, AND IS NOT TO BE USED TO CONVEY OR ESTABLISH INTERESTS IN REAL PROPERTY EXCEPT THOSE RIGHTS AND INTERESTS IMPLIED OR ESTABLISHED BY CREATION OR RECONFIGURATION OF THE POLITICAL SUBDIVISION FOR WHICH IT WAS PREPARED.**





NOTE: LINE AND CURVE TABLE LOCATED ON SHEET 7

<div style="text-align: center;">SHEET</div> <div style="text-align: center; font-size: 2em;">6    OF    7</div>	DATE: 03/07/18	<div style="text-align: center; font-size: 3em; font-weight: bold;">ZONING EXHIBIT</div> <div style="text-align: center; font-size: 0.8em;">             OUT OF THE              ARTHUR GIBSON SURVEY, ABSTRACT NO. 302, THE              ELIZABETH MCANIER SURVEY, ABSTRACT NO. 571, THE              RB&amp;FA ENGLISH SURVEY, ABSTRACT NO. 254, THE              CRAWFORD TREESE SURVEY, ABSTRACT NO. 831, AND THE              JOSEPH C GUEST SURVEY, ABSTRACT NO. 311              JOHNSON COUNTY, TEXAS           </div>	<div style="text-align: center; font-size: 2em; font-weight: bold;">JACOBS®</div> <div style="text-align: center; font-size: 0.8em;">             1999 BRYAN STREET, SUITE 1200              DALLAS, TEXAS 75201-3136              PHONE (214)638-0145 FAX (214)638-0447              TBPLS FIRM REGISTRATION NO. 10152300           </div>
	SCALE: 1" = 1000'		
	DRAWN BY: ATP		
	CHECKED BY: MJB		



DETAIL  
NOT TO SCALE

NOT TO SCALE

CHASE TRAIL

FOX GLEN TRAIL

THICKET DRIVE

CONCHO TRAIL

18  
VERONICA LANE  
2010-18985  
O.P.R.J.C.T.

5  
ANTHONY J. VELASCO AND  
INSTRUMENT NO.  
2017-11653  
O.P.R.J.C.T.

6  
JOSHUA T. ROCHELLE AND  
INSTRUMENT NO.  
2016-20759  
O.P.R.J.C.T.

4  
GEORGE DAVID BURTON  
AND MARY LO BURTON  
VOLUME 3589, PAGE 545  
O.P.R.J.C.T.

3  
JEFFREY CALCOTT  
INSTRUMENT NO.  
2015-12395  
O.P.R.J.C.T.

10  
AMERICAN RESIDENTIAL  
LEASING COMPANY, LLC  
INSTRUMENT NO.  
2014-20154  
O.P.R.J.C.T.

1  
BRYAN J. WILLIAMS AND  
CHLOE P. WILLIAMS  
INSTRUMENT NO.  
2015-11204  
O.P.R.J.C.T.

9  
DANNA S. VUGHAN AND  
HUSBAND WILLIAM J. VUGHAN;  
AND SUSAN C. VAUGHAN AND  
HUSBAND CARL D. VUGHAN  
INSTRUMENT NO. 2013-8003  
O.P.R.J.C.T.

5  
JASON EDWARD BURDEN  
AND TRISTY BURDEN  
INSTRUMENT NO.  
2017-16103  
O.P.R.J.C.T.

4  
JAVIER RAMIREZ AND  
ANITA RAMIREZ  
INSTRUMENT NO.  
2017-16163  
O.P.R.J.C.T.

5  
DOUGLAS WILLIAM  
ALEXANDER AND VICTORIA  
INSTRUMENT NO. 789  
O.P.R.J.C.T.

6  
TROY L. STAGGS  
INSTRUMENT NO.  
2017-3615  
O.P.R.J.C.T.

24  
CALVIN C. MANW, JR  
VOLUME 3699, PAGE 911  
O.P.R.J.C.T.

LINE	BEARING	DISTANCE	LINE	BEARING	DISTANCE
L1	S29°42'45"E	1,498.21'	L18	N52°58'47"W	680.10'
L2	S59°38'03"W	1,278.01'	L19	N44°50'58"E	270.57'
L3	N23°57'00"W	507.93'	L20	S20°25'51"E	320.52'
L4	S61°52'28"W	402.95'	L21	S59°28'02"E	73.28'
L5	N77°30'50"W	970.84'	L22	S21°04'26"E	117.03'
L6	N10°24'02"E	187.07'	L23	N60°16'51"E	628.83'
L7	S79°35'58"E	25.00'	L24	S29°22'09"E	2,662.03'
L8	N10°24'02"E	543.54'	L25	N60°00'44"E	973.93'
L9	N79°35'58"W	25.00'	L26	S30°01'28"E	844.43'
L10	N09°04'06"E	1,872.15'	L27	S14°58'32"W	127.01'
L11	S80°55'54"E	5.00'	L28	S30°01'28"E	329.11'
L12	N01°19'50"E	92.29'	L29	S59°30'02"W	1,296.50'
L13	N88°40'10"W	5.00'	L30	S29°58'00"E	1,377.17'
L14	N01°19'50"E	644.39'	L31	S60°28'01"W	1,263.70'
L15	S85°18'58"E	5.00'	L32	N29°42'45"W	1,501.02'
L16	S83°55'16"E	680.22'	L33	S60°23'42"W	1,384.07'
L17	N21°16'41"E	1,017.01'			

CURVE	CENTRAL ANGLE	RADIUS	CHORD BEARING	CHORD LENGTH	ARC LENGTH
C1	8°48'01"	4,348.35'	N05°52'22"E	667.22'	667.88'
C2	3°21'12"	2,588.72'	N03°00'26"E	151.49'	151.51'
C3	1°23'54"	2,583.72'	N05°22'59"E	63.05'	63.06'
C4	7°49'22"	2,588.72'	N40°56'17"E	353.17'	353.44'
C5	9°12'24"	4,080.00'	N40°14'46"E	654.91'	655.61'

SHEET

7 OF 7

DATE: 03/07/18

SCALE: NOT TO SCALE

DRAWN BY: ATP

CHECKED BY: MJB

## ZONING EXHIBIT

OUT OF THE  
ARTHUR GIBSON SURVEY, ABSTRACT NO. 302, THE  
ELIZABETH MCANIER SURVEY, ABSTRACT NO. 571, THE  
RB&FA ENGLISH SURVEY, ABSTRACT NO. 254, THE  
CRAWFORD TREESE SURVEY, ABSTRACT NO. 831, AND THE  
JOSEPH C GUEST SURVEY, ABSTRACT NO. 311  
JOHNSON COUNTY, TEXAS

**JACOBS**

1999 BRYAN STREET, SUITE 1200  
DALLAS, TEXAS 75201-3136  
PHONE (214)638-0145 FAX (214)638-0447  
TBPLS FIRM REGISTRATION NO. 10152300