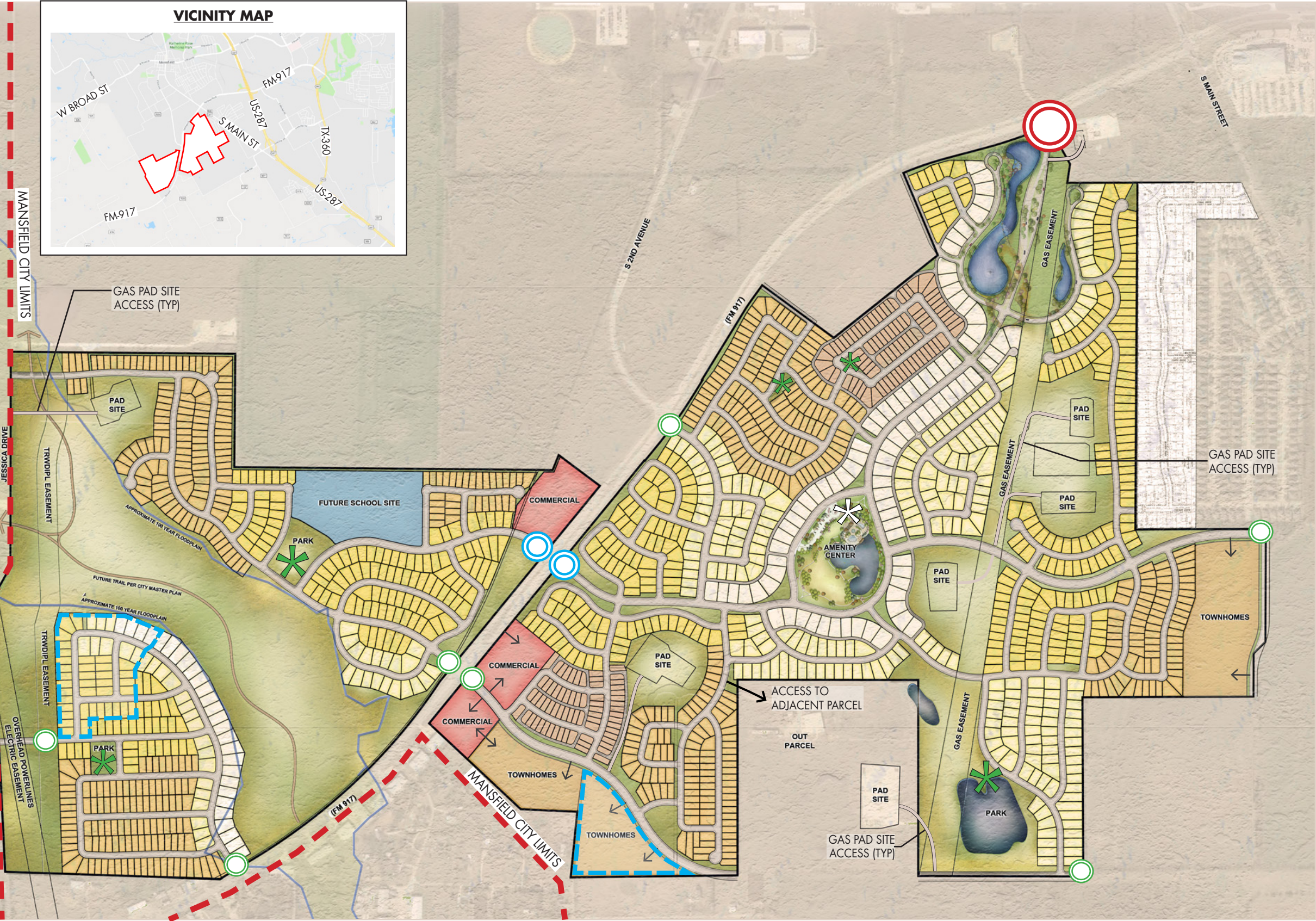
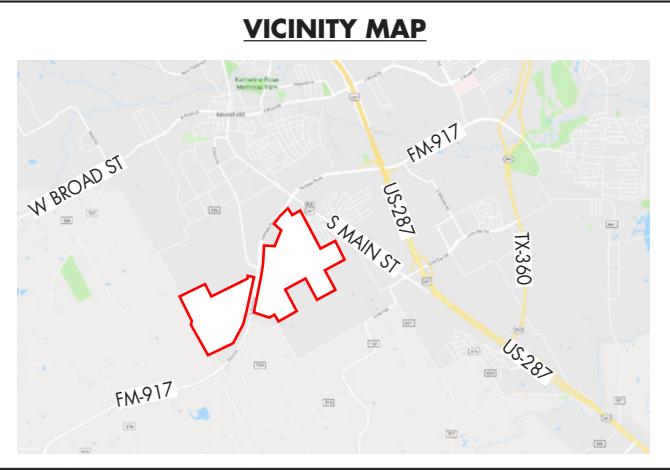


HANOVER PLANNED DEVELOPMENT

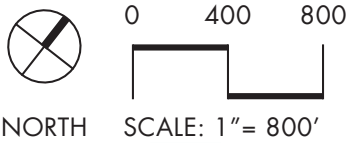
TOTAL AREA: 714.5 ACRES
COMMERCIAL DISTRICT: 14.6 ACRES
TOWNHOUSE DISTRICT: 46.9 ACRES
SINGLE-FAMILY: 1,571 TOTAL LOTS
RESIDENTIAL PRODUCT 1 (MIN 9,600 SF): 115 LOTS
RESIDENTIAL PRODUCT 2 (MIN 8,400 SF): 266 LOTS
RESIDENTIAL PRODUCT 3 (MIN 7,200 SF): 465 LOTS
RESIDENTIAL PRODUCT 4 (MIN 6,000 SF): 572 LOTS
RESIDENTIAL PRODUCT 5 (MIN 4,400 SF): 153 LOTS

- NEIGHBORHOOD PARKS
- AMENITY CENTER
- PRIMARY DEVELOPMENT ENTRY
- SECONDARY DEVELOPMENT ENTRY
- TERTIARY DEVELOPMENT ENTRY
- POTENTIAL GATED NEIGHBORHOOD

- FINAL DESIGN TO BE DETERMINED AT PP PHASE



THIS PLAN AND THE DESIGNS DEPICTED ARE CONCEPTUAL IN NATURE AND ARE CONSIDERED PRELIMINARY AND SUBJECT TO CHANGE.



APPLICANT:
HANOVER PROPERTY COMPANY
3001 KNOX STREET, SUITE 207
DALLAS, TX 75205
P: 214-445-2200 F: 214-445-2261



MASTER PLAN : EXHIBIT C-1
M3 RANCH | MANSFIELD, TEXAS

MESA
MAY 1, 2018 2001 NORTH LAMAR STREET, SUITE 100
PROJECT#: 17029 DALLAS, TX 75202
ZC#: 18-004 P: 214-871-0568

