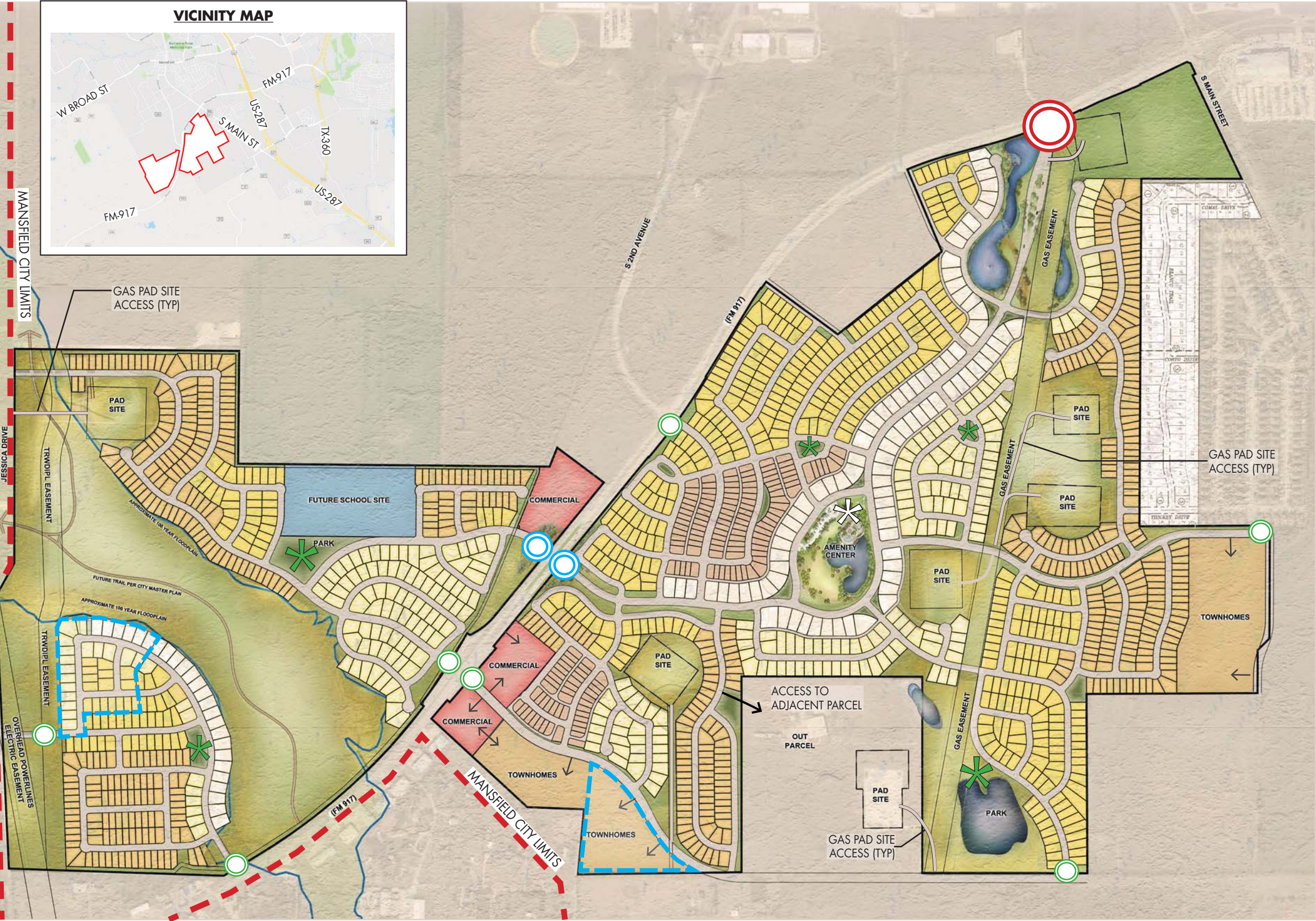
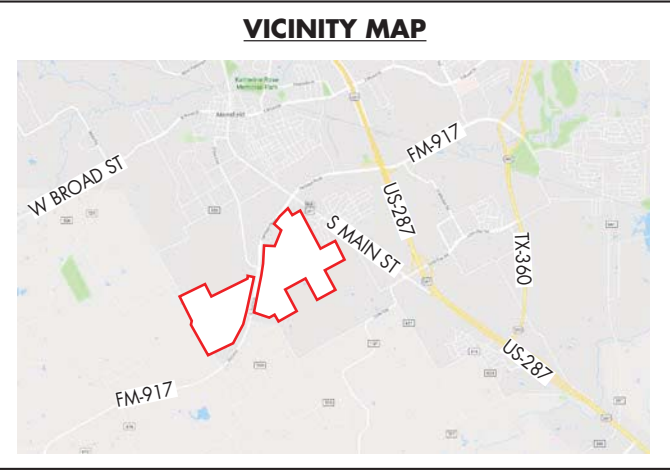


Exhibit "A"

HANOVER PLANNED DEVELOPMENT

- TOTAL AREA: 714.5 ACRES
- COMMERCIAL DISTRICT: 14.6 ACRES
- TOWNHOUSE DISTRICT: 34.0 ACRES
- SINGLE-FAMILY: 1,571 TOTAL LOTS
- RESIDENTIAL PRODUCT 1 (MIN 9,600 SF): 115 LOTS
 - RESIDENTIAL PRODUCT 2 (MIN 8,400 SF): 266 LOTS
 - RESIDENTIAL PRODUCT 3 (MIN 7,200 SF): 465 LOTS
 - RESIDENTIAL PRODUCT 4 (MIN 6,000 SF): 572 LOTS
 - RESIDENTIAL PRODUCT 5 (MIN 4,400 SF): 153 LOTS
- NEIGHBORHOOD PARKS
 - AMENITY CENTER
 - PRIMARY DEVELOPMENT ENTRY
 - SECONDARY DEVELOPMENT ENTRY
 - TERTIARY DEVELOPMENT ENTRY
 - POTENTIAL GATED NEIGHBORHOOD
- FINAL DESIGN TO BE DETERMINED AT PP PHASE



THIS PLAN AND THE DESIGNS DEPICTED ARE CONCEPTUAL IN NATURE AND ARE CONSIDERED PRELIMINARY AND SUBJECT TO CHANGE.



APPLICANT: HANOVER PROPERTY COMPANY
3001 KNOX STREET, SUITE 207
DALLAS, TX 75205
P: 214-445-2200 F: 214-445-2261



MASTER PLAN : EXHIBIT C-1
M3 RANCH | MANSFIELD, TEXAS

JUNE 7, 2018 2001 NORTH LAMAR STREET, SUITE 100
PROJECT#: 17029 DALLAS, TX 75202
ZC#: 18-004 P: 214-871-0568

