



3
A-201

KEY PLAN

1" = 60'-0"

2 EAST ELEVATION - 2
A-201 1/8" = 1'-0"

| | | |
|---|---------------|---------|
| EAST ELEVATION - 1 & 2 MATERIAL CALCULATIONS - REAR ELEV. | AREA | PERCENT |
| NET AREA (EXCLUDING OPENINGS & RECESSED BALCONIES) | 12,247.3 S.F. | 100% |
| STONE OR OTHER APPROVED MASONRY MATERIAL | 3,133.5 S.F. | 25.5% |
| BRICK 1 | 3,666.9 S.F. | 29.9% |
| BRICK 2 | 2,573.5 S.F. | 21% |
| FIBER CEMENT LAP SIDING 1 | 422.4 S.F. | 3.4% |
| FIBER CEMENT LAP SIDING 2 | 2,451.9 S.F. | 20% |
| TOTAL MASONRY | 9,373.4 S.F. | 76.5% |
| TOTAL FIBER CEMENT LAP SIDING | 2,873.9 S.F. | 23.4% |

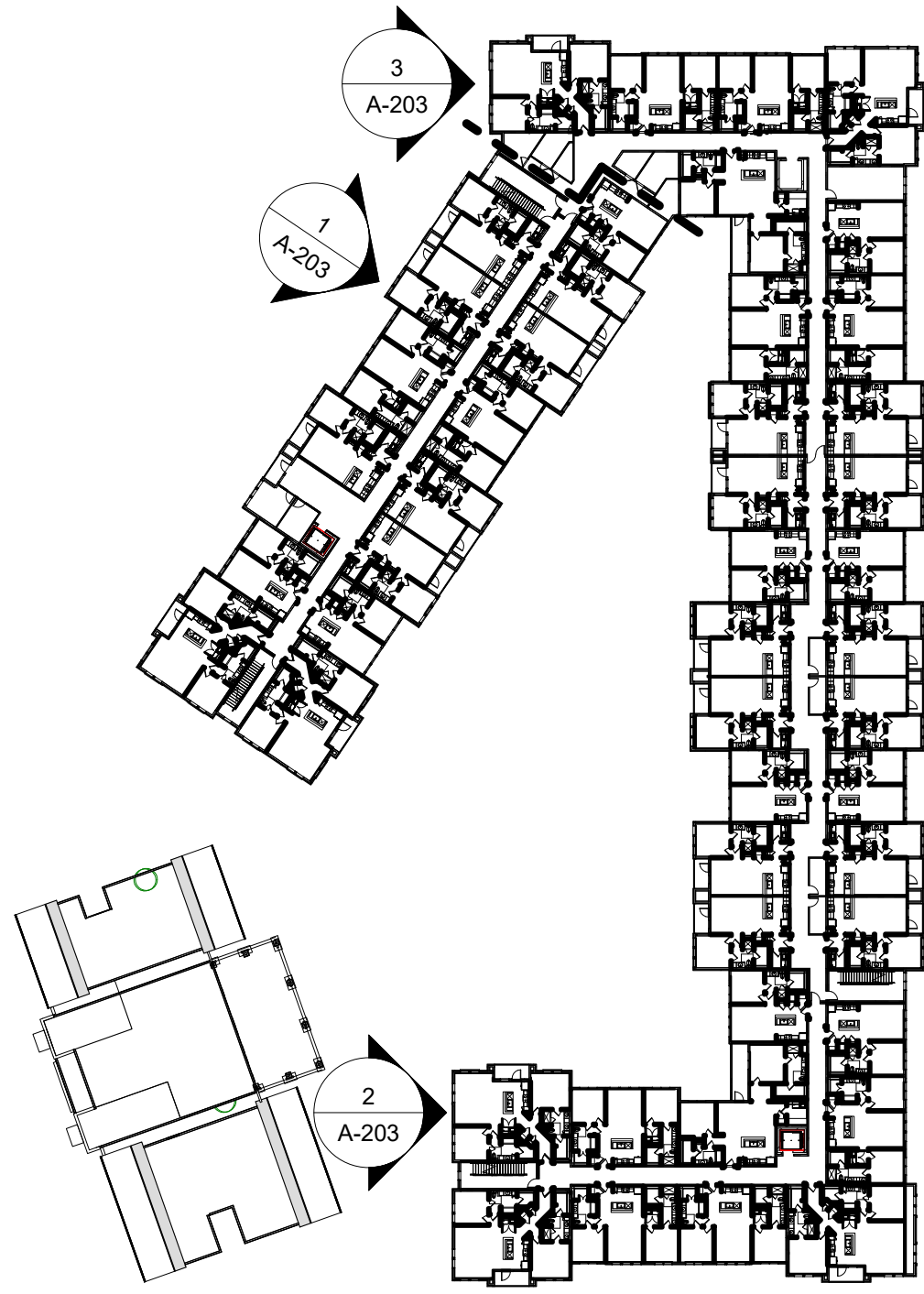


1 EAST ELEVATION - 1
A-201 1/8" = 1'-0"

EXHIBIT C 2 OF 8

| WEST END ELEVATION-2 MATERIAL CALCULATIONS - FRONT ELEV. | AREA | PERCENT |
|--|--------------|---------|
| NET AREA (EXCLUDING OPENINGS & RECESSED BALCONIES) | 1,876.1 S.F. | 100% |
| STONE OR OTHER APPROVED MASONRY MATERIAL | 402.3 S.F. | 21.4% |
| BRICK 1 | 1,014.8 S.F. | 54% |
| BRICK 2 | 320.2 S.F. | 17% |
| FIBER CEMENT LAP SIDING 1 | 138.8 S.F. | 7.3% |
| FIBER CEMENT LAP SIDING 2 | 0 S.F. | 0% |
| TOTAL MASONRY | 1,737.3 S.F. | 92.6% |
| TOTAL FIBER CEMENT LAP SIDING | 138.8 S.F. | 7.3% |

| WEST END ELEVATION MATERIAL CALCULATIONS - FRONT ELEV. | AREA | PERCENT |
|--|--------------|---------|
| NET AREA (EXCLUDING OPENINGS & RECESSED BALCONIES) | 3,169.9 S.F. | 100% |
| STONE OR OTHER APPROVED MASONRY MATERIAL | 701.4 S.F. | 22.1% |
| BRICK 1 | 1,647.5 S.F. | 51.9% |
| BRICK 2 | 249.2 S.F. | 7.8% |
| FIBER CEMENT LAP SIDING 1 | 134.6 S.F. | 4.2% |
| FIBER CEMENT LAP SIDING 2 | 437.2 S.F. | 13.7% |
| TOTAL MASONRY | 2,598.1 S.F. | 81.9% |
| TOTAL FIBER CEMENT LAP SIDING | 571.8 S.F. | 18% |



4 KEY PLAN
1" = 60'-0"



3 WEST END ELEVATION-2
1/8" = 1'-0"



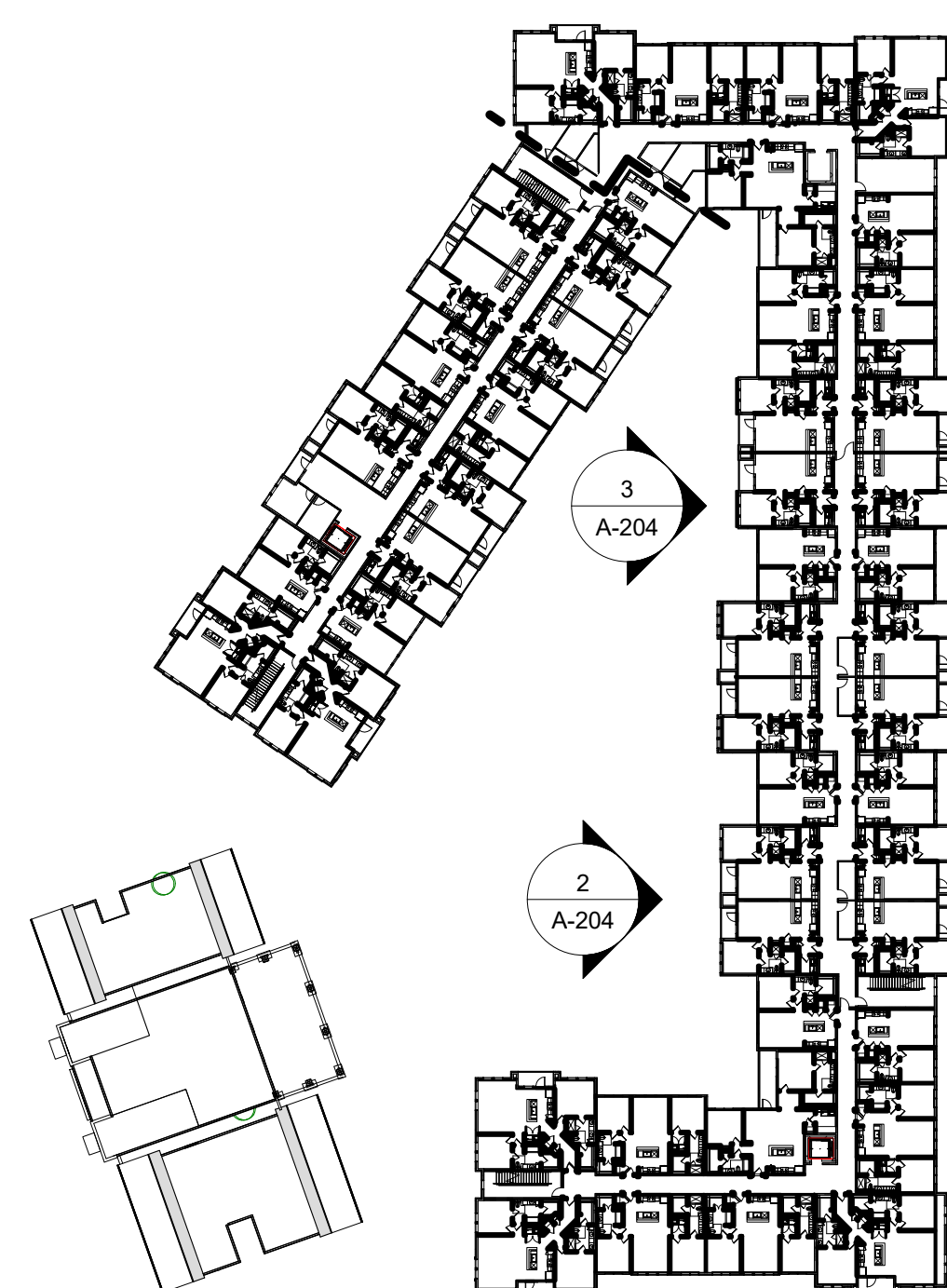
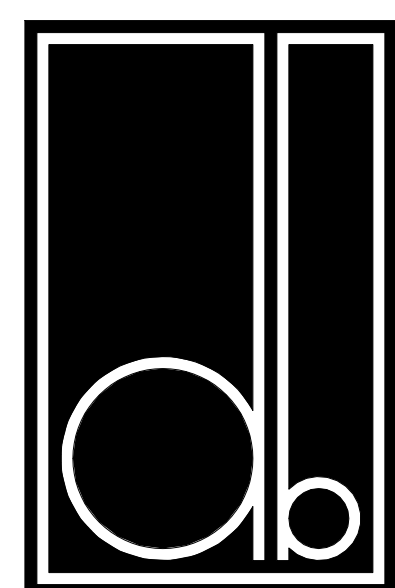
2 WEST END ELEVATION
1/8" = 1'-0"

| WEST ELEVATION MATERIAL CALCULATIONS - FRONT ELEV. | AREA | PERCENT |
|--|--------------|---------|
| NET AREA (EXCLUDING OPENINGS & RECESSED BALCONIES) | 6,854.8 S.F. | 100% |
| STONE OR OTHER APPROVED MASONRY MATERIAL | 1,720.3 S.F. | 25% |
| BRICK 1 | 2,401.3 S.F. | 35% |
| BRICK 2 | 1,717.7 S.F. | 25% |
| FIBER CEMENT LAP SIDING 1 | 246.2 S.F. | 3.5% |
| FIBER CEMENT LAP SIDING 2 | 769.3 S.F. | 11.2% |
| TOTAL MASONRY | 5,839.3 S.F. | 85.1% |
| TOTAL FIBER CEMENT LAP SIDING | 1,015.5 S.F. | 14.8% |

| AWNING CALCULATION | OPENINGS | AWNINGS |
|---|-----------|-----------|
| WEST ELEVATION - LEVEL 1 (EXCLUDING RECESSED BALCONIES) | 12 (100%) | 7 (58.3%) |



1 WEST ELEVATION
1/8" = 1'-0"



1
A-204

KEY PLAN

1" = 60'-0"



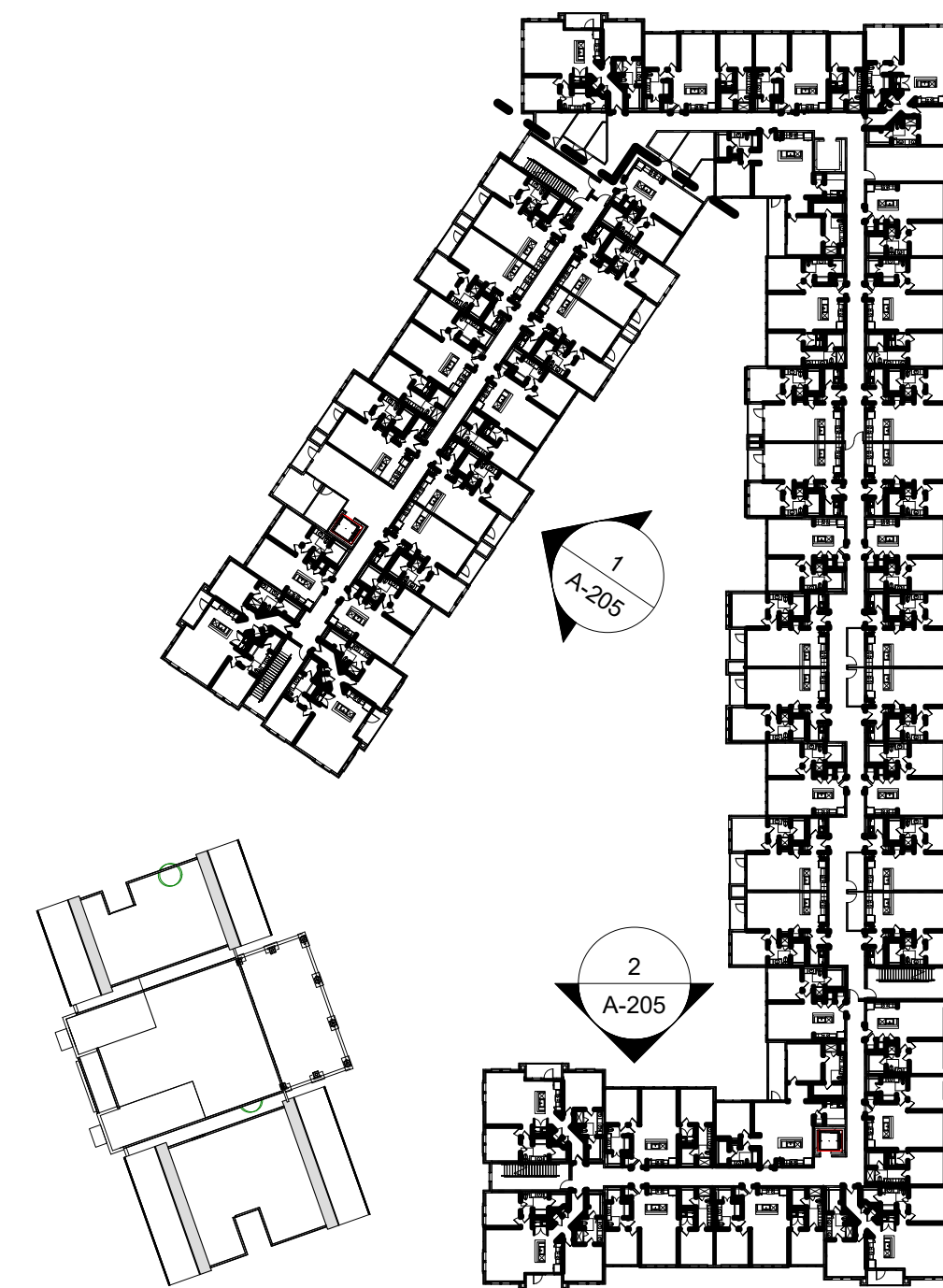
3 WEST COURTYARD ELEVATION 2
A-204 1/8" = 1'-0"

| WEST COURTYARD ELEVATION-1 & 2 MATERIAL CALCULATIONS - REAR ELEV. | AREA | PERCENT |
|---|--------------|---------|
| NET AREA (EXCLUDING OPENINGS & RECESSED BALCONIES) | 7,500.3 S.F. | 100% |
| STONE OR OTHER APPROVED MASONRY MATERIAL | 1,963.3 S.F. | 26.1% |
| BRICK 1 | 1,801.8 S.F. | 24% |
| BRICK 2 | 0 S.F. | 0% |
| FIBER CEMENT LAP SIDING 1 | 0 S.F. | 0% |
| FIBER CEMENT LAP SIDING 2 | 3,735.2 S.F. | 49.8% |
| TOTAL MASONRY | 3,765.1 S.F. | 50.2% |
| TOTAL FIBER CEMENT LAP SIDING | 3,735.2 S.F. | 49.8% |

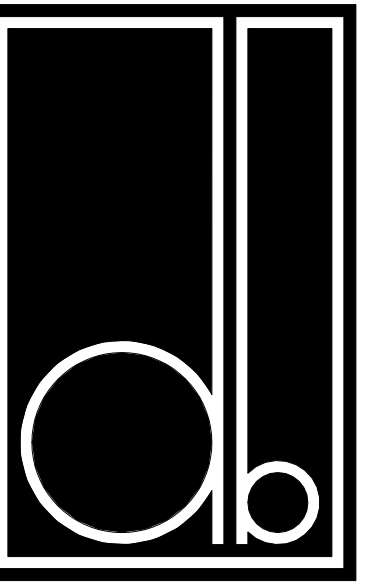


2 WEST COURTYARD ELEVATION-1
Δ 204 410°E - 41.0°

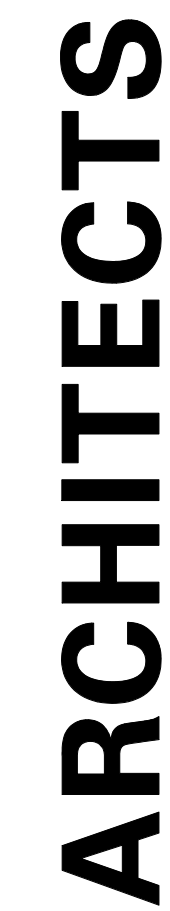
| SOUTH COURTYARD ELEVATION MATERIAL CALCULATIONS - REAR ELEV. | AREA | PERCENT |
|--|--------------|---------|
| NET AREA (EXCLUDING OPENINGS & RECESSED BALCONIES) | 2,817.7 S.F. | 100% |
| STONE 1 | 751.9 S.F. | 26.6% |
| BRICK 1 | 667.8 S.F. | 23.7% |
| BRICK 2 | 0 S.F. | 0% |
| FIBER CEMENT LAP SIDING 1 | 0 S.F. | 0 |
| FIBER CEMENT LAP SIDING 2 | 1,398 S.F. | 49.6% |
| TOTAL MASONRY | 1,419.7 S.F. | 50.3% |
| TOTAL FIBER CEMENT LAP SIDING | 1,398 S.F. | 49.7% |



| EAST COURTYARD ELEVATION MATERIAL CALCULATIONS - REAR ELEV. | AREA | PERCENT |
|---|--------------|---------|
| NET AREA (EXCLUDING OPENINGS & RECESSED BALCONIES) | 6,124.9 S.F. | 100% |
| STONE OR OTHER APPROVED MASONRY MATERIAL | 1,706.4 S.F. | 27.8% |
| BRICK 1 | 1,592.9 S.F. | 26% |
| BRICK 2 | 0 S.F. | 0% |
| FIBER CEMENT LAP SIDING 1 | 0 S.F. | 0% |
| FIBER CEMENT LAP SIDING 2 | 2,825.6 S.F. | 46.1% |
| TOTAL MASONRY | 3,299.3 S.F. | 53.8% |
| TOTAL FIBER CEMENT LAP SIDING | 2,825.6 S.F. | 46.2% |



| | | |
|----------|----------|--|
| | | |
| | | |
| | | |
| | | |
| | | |
| | | |
| | | |
| | | |
| | | |
| | | |
| | | |
| No. Date | Revision | |



Dallas, Texas 75201 | 214.303.1500

Mansfield, Texas

DESIGN DEVELOPMENT



EXHIBIT C 7 OF 8

Author _____
 Drawn By _____
 Approver _____
 Reviewed _____

GARAGE ELEVATIONS

| | |
|-------------|------------|
| Project No. | 19031 |
| Date | 04.06.2020 |

A-206

© Copyright 2019

