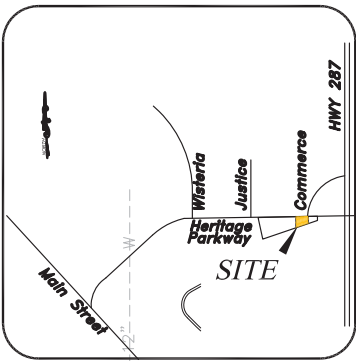
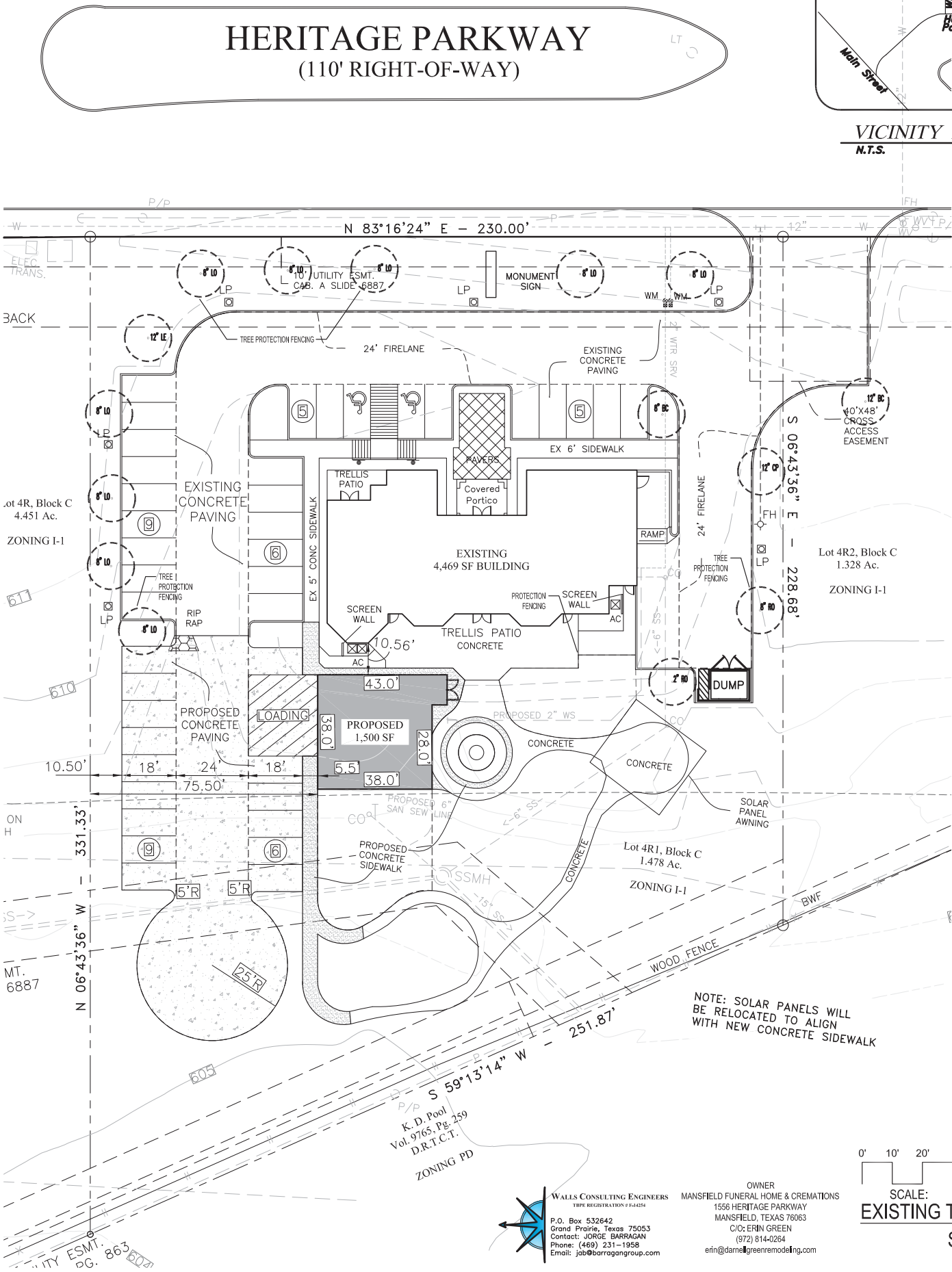
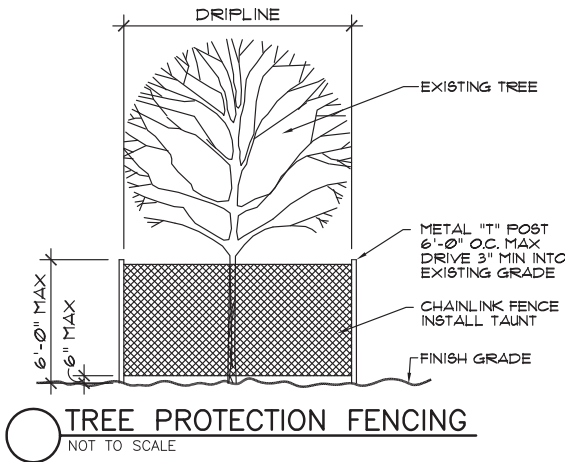


EXISTING TREE			
NUMBER	BOTANICAL NAME	COMMON NAME	DBH
1	Quercus virginiana	Live Oak	8
2	Quercus virginiana	Live Oak	8
3	Quercus virginiana	Live Oak	8
4	Quercus virginiana	Live Oak	8
5	Quercus virginiana	Live Oak	8
6	Ulmus parvifolia	Lacebark Elm	12
7	Quercus virginiana	Live Oak	8
8	Quercus virginiana	Live Oak	8
9	Quercus virginiana	Live Oak	8
10	Quercus shumardii	Shumard's Red Oak	4
11	Quercus shumardii	Shumard's Red Oak	8
12	Pistacia chinensis	Chinese Pistache	12
13	Taxodium distichum	Bald Cypress	12
14	Taxodium distichum	Bald Cypress	8



PROJECT NAME	Mansfield Funeral Home
PROJECT NUMBER	20-051
REVISIONS	
CITY COMMENTS	9-3-2020

Mansfield Funeral Home  
1556 Heritage Parkway  
Mansfield, Texas



PROJECT NAME  
Mansfield Funeral Home  
1556 Heritage Parkway  
Mansfield, Texas

RICKY D. PETTY  
LANDSCAPE ARCHITECT  
7720 ALTO CARO DRIVE  
DALLAS, TEXAS 75248  
PHONE: (214) 543-5265  
e-mail: rdpetty1954@att.net

TITLE	Existing Tree
DATE	August 14, 2020
SCALE	1" = 20'-0"
SHEET	

0' 10' 20' 40'  
SCALE: 1" = 20'-0"  
EXISTING TREE PLAN

SUP#20-014  
EXHIBIT D

PLANT SCHEDULE					
ABB	BOTANICAL NAME	COMMON NAME	QUANTITY	SIZE	NOTES
Shade Trees					
CE	Ulmus crassifolia	Cedar Elm	4 EA.	#100, 4" cal. Min., 14' Ht. min., 6' Spread min.	Container., Single trunk, Well branched with Central Leader, 6' branching height
LO	Quercus virginiana	Live Oak	4 EA.	#100, 4" cal. Min., 14' Ht. min., 6' Spread min.	Container., Single trunk, Well branched with Central Leader, 6' branching height
RO	Quercus shumardii	Shumard's Red Oak	2 Ea.	#100, 4" cal. Min., 14' Ht. min., 6' Spread min.	Container., Single trunk, Well branched with Central Leader, 6' branching height
Ornamamental Trees					
SH	Ilex attenuata 'Savannah Holly	Savannah Holly - Tree Form	2 EA.	#45, 10' Ht.Min, 6' spread Min.	Container, 3" cal. min., Well Branched
Shrubs					
AEG	Abelia grandiflora 'Edward Goucher'	Abelia - 'Edward Goucher'	21 EA.	#5, 24" min. Ht. 18" min. spread	Container, Well branched full to ground, Speciman, Plant 36" O.C.
CL	Temstroemia gymnanthera	Cleyera	4 EA.	#5, 36" min. Ht. 24" min. spread	Container, Well branched full to ground, Speciman
CN	Nandina domestica 'Compactum'	Compact Nandina	17 EA.	#3, 24" min. Ht. 18" min. spread	Container, Well branched full to ground, Speciman, Plant 32" O.C.
DBH	Ilex cornuta 'Burfordii nana'	Dwarf Burford Holly	7 EA.	#5, 24" min. Ht., 18" min. spread	Container, Well branched full to ground, Plant 36" O.C.
DYH	Ilex vomitoria 'Nana'	Dwarf Yaupon Holly	33 EA.	#2, 15" min. Ht. 12" min. spread	Container, Well branched full to ground, Speciman, Plant 24" O.C.
GSN	Nandina domestica 'Gulf Stream'	Gulf Stream Nandina	8 EA.	#3, 24" min. Ht. 18" min. spread	Container, Well branched full to ground, Speciman, Plant 30" O.C.
NH	Ilex attenuata 'Needlepoint'	Needlepoint Holly	22 EA.	#5, 36" min. Ht., 24" min. spread	Container, Well branched full to ground, Speciman, Plant 36" O.C.
TJ	Juniperus virginiana 'Taylor'	Taylor Juniper	5 EA.	#7.5, 48" min. Ht., 24" min. spread	Container, Well branched full to ground, Speciman
VP	Pittosporum tobira 'Variegatum'	Variegated Pittosporum	2 EA.	#7.5, 36" min. Ht. 24" min. spread	Container, Well branched full to ground, Speciman
Turf					
BG	Cynodon dactylon	Bermuda Grass	5,200 Sq. Ft.	Solid Sod	Staggered tight joints, sand filled and rolled

SUMMARY CHART - BUFFER YARD / SETBACKS						
Location of Buffer Yard or Setback	Required / Provided	Length	Buffer Yard or Setback Width/Type	Canopy Trees	Ornamental Trees	Shurbs
North	Required	230 Ft.	20 Ft.	6		
	Provided		24.5 Ft.	8 Tree Credit		
East	Required	228.68 Ft.	10 Ft.	10		
	Provided		10 Ft.	8 Tree Credits and 2 Red Oaks		
South	Required	251.87 Ft.	N/A			
	Provided					
West	Required	331.33 Ft.	10 Ft.	14		
	Provided		10 Ft.	6 Tree Credits and 4 Live Oaks		
Note: 9 Existing 8 inch DBH Trees = 18 Tree Credits 3 Existing 12 inch DBH Trees = 9 Tree Credits TOTAL: 27 Tree Credits						

SUMMARY CHART - INTERIOR LANDSCAPE					
Landscape Area (in Sq. Ft.)	% of Landscape Area	Canopy Trees	Ornamental Trees	Shrubs	Ground Cover (in Sq. Ft.)
64,400					
Required	6,440	10%			
Provided	29,520	45.80%			

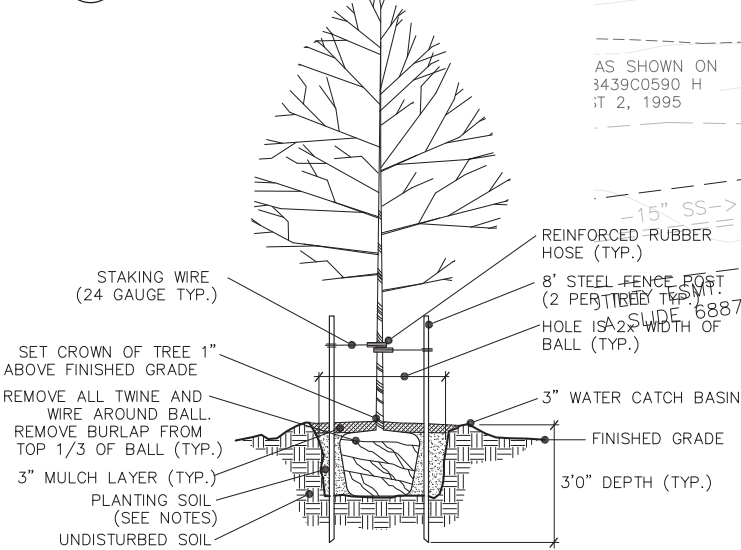
SUMMARY CHART - INTERIOR PARKING LOT LANDSCAPING		EXISTING TREE CREDIT SUMMARY			
		DBH (in inches)	Quantity	Canopy Trees	Understory Trees
No. of Required Parking Spaces	40	6 to 8 (2 Tree Credits Each)	9	18	
No. of Provided Parking Spaces	40	9 to 15 (3 Tree Credits Each)	3	9	
No. of Tree Islands Provided	6	TOTAL		27	

PLANTING NOTES:

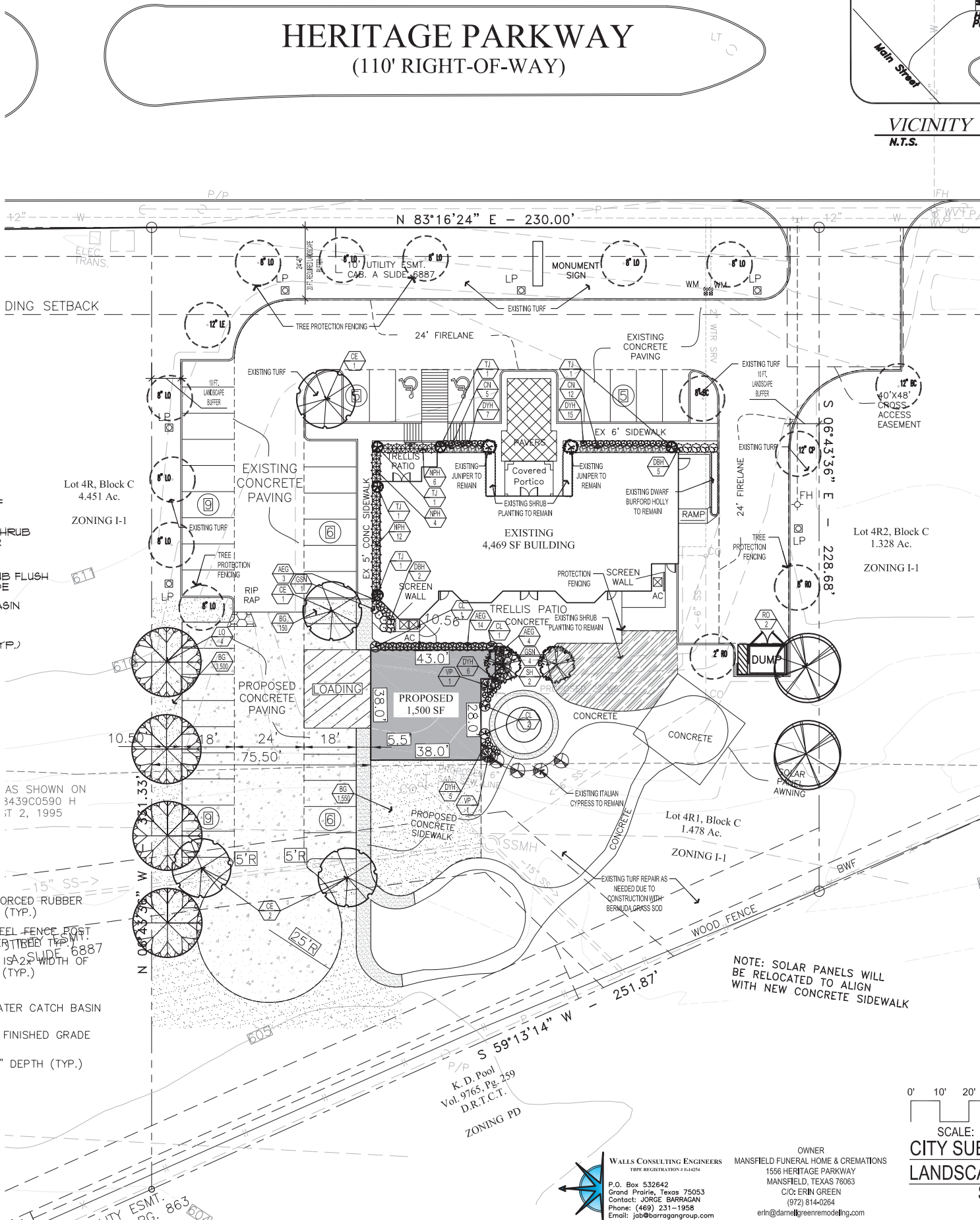
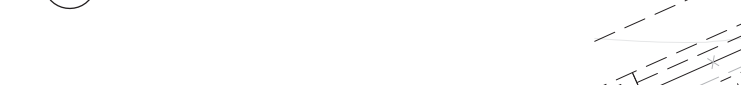
- Submit a construction schedule of work to be approved by Landscape Architect and Owner. Failure to submit schedule may result in Landscape Architect stopping construction until submitted. No extensions of time will be considered for failure to promptly submit schedule.
- Notify Landscape Architect 48 hours in advance of commencement of work to coordinate project inspection schedules.
- Locate existing underground utilities and obstructions prior to commencing work. Repair damage to utilities resulting from the installation of the work at no additional cost to Owner.
- Notify Landscape Architect immediately upon encountering any unknown obstructions, grade differences or conditions not indicated on drawings. Make necessary revisions as required to conform to plans and specifications due to failure to give such notification.
- Coordinate with other trades and subcontractors as required to accomplish the planting operation.
- Plant material shall be tagged or approved at site by Landscape Architect prior to installation. Install plant material free of pest and diseases. Guarantee plant material for a period of 365 calendar days from date of issuance of final acceptance by Landscape Architect.
- Layout proposed planting beds and receive Landscape Architect's approval prior to installation. Notify Landscape Architect of layout conflicts. Failure to notify Landscape Architect will result in Contractor's liability to relocate materials at no additional expense to Owner.
- Excavate bed areas to a depth of 4 inches, backfill with 4 inches of Acid Gro Complete mix as manufacture by Soil Building Systems and rototill to a depth of 12 inches producing a homogeneous mixture.
- Final locations of plant material shall be subject to approval by Landscape Architect. Install groundcover 12 inches from the edge of shrubs and tree root balls and 4 inches from edge of paving, walls and other structures.
- Backfill tree and shrub pits with one part compost as manufactured by Soil Building Systems and two parts existing soil.
- Stake tree locations and acquire written approval from Landscape Architect prior to installation of irrigation system. Do not locate tree(s) within 10 feet of any irrigation rotary spray head. Install tree(s) in areas covered by irrigation system. Provide supplemental watering as required until final acceptance by Landscape Architect. Locate tree(s) 4 feet minimum from walls, headers, property lines and other trees within project. Notify Landscape Architect of location conflicts for resolution. Failure to notify Landscape Architect will result in Contractor's liability to relocate trees at no additional expense to Owner.
- Stake tree(s) immediately upon installation and within same day as planted.
- Mulch planting beds and tree pits with shredded hardwood mulch.
- Provide full service maintenance of landscape within project scope for a period of four (4) months, 120 calendar days, from date of issuance of final acceptance by Landscape Architect. Failure to properly maintain landscape and irrigation system will result in extending the guarantee and maintenance period at no additional expense to Owner.
- All landscape areas to be watered by an automatic landscape irrigation system.

**LANDSCAPE MAINTENANCE:** The property owner, tenant or agent, shall be responsible for the maintenance of all required landscaping in a healthy, neat, orderly and live-growing condition at all times. This shall include mowing, edging, pruning, fertilizing, irrigation, weeding and other such activities common to the maintenance of landscaping. Landscaped areas shall be kept free of trash, litter, weeds and other such materials not a part of the landscaping. Plant materials that die shall be replaced with plant materials of similar variety and size.

2 SHRUB PLANTING



1 TREE PLANTING



PROJECT NAME	Mansfield Funeral Home
PROJECT NUMBER	20-051
REVISIONS	
CITY COMMENTS	9-3-2020

**Mansfield Funeral Home**  
1556 Heritage Parkway  
Mansfield, Texas



PROJECT NAME  
**Mansfield Funeral Home**  
1556 Heritage Parkway  
Mansfield, Texas

**RICKY D. PETTY**  
LANDSCAPE ARCHITECT  
7720 ALTO CARO DRIVE  
DALLAS, TEXAS 75248  
PHONE: (214) 543-5265  
e-mail: rdpetty1954@att.net

TITLE	Landscape
DATE	August 14, 2020
SCALE	1" = 20'-0"
SHEET	L-2