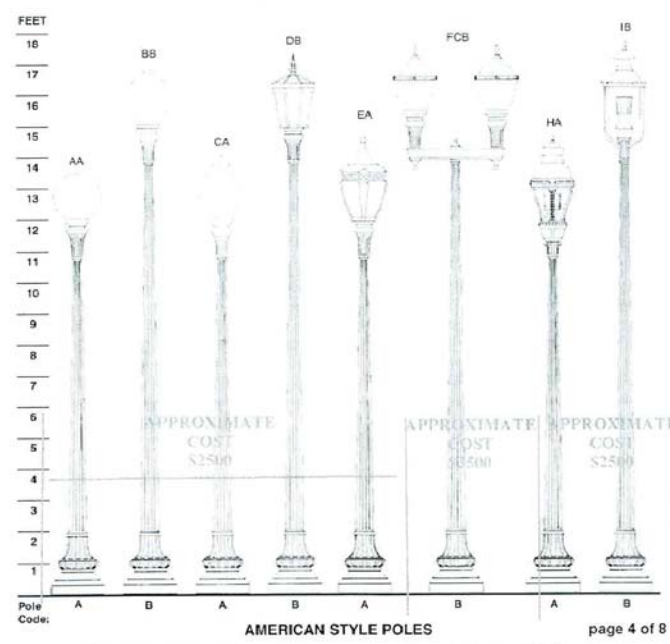
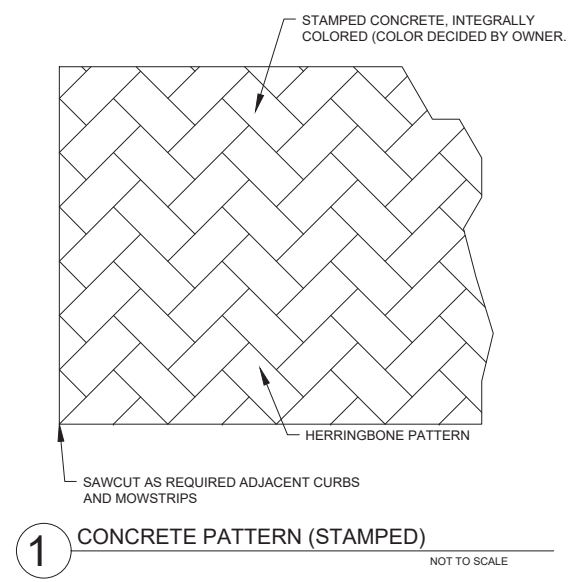
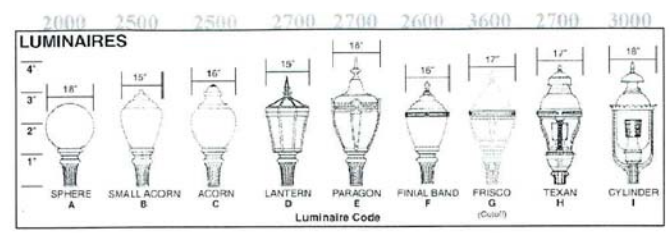


NOTE:
THE "ACORN" (C) LUMINAIRES ON AN ELEVEN FOOT (11') "AMERICAN STYLE POLE", WITH 100 WATT LED, AS SHOWN BELOW, WILL BE INSTALLED AT EACH STREETLIGHT LOCATION.



Owner Association Notes:

1. A mandatory owners' association will be responsible for the maintenance of the screening wall, open space lots, detention ponds, enhanced entry features, landscaping, hardscape improvements.
2. The Owners Association and associated documents shall be filled in accordance with the City of Mansfield policies. the documents shall be filed with the final plat. the documents shall be submitted in a timely manner to allow for a minimum of sixty (60) days review. failure to submit the documents or incomplete documents may result in delay of construction, acceptance of the development or delay in approval of a building permit. The City does not except the responsibility for the delays cause by the failure to submit the association documents or the inaccuracy of the documents.

Landscaping and Screening Requirements:

- Common area, including detention pond area are to be landscaped per Exhibit D, Landscape Plan.
- Four medium-sized canopy trees shall be planted on each residential lot. Minimum of two in front yard.
- Screening shall be provided at the south, west, and north boundary through the use of a 6 foot height board-on-board fence as indicated per Exhibit D, Landscape Plan.

ENGINEER:
Remington C. Wheat, P.E.
Bannister Engineering
240 North Mitchell Rd
Mansfield, TX 76063
817.842.2094
remington@bannistereng.com

OWNER:
Mouaz ALLababidi
ALLababidi Foundation
802 Greenvue Dr
Grand Prairie, TX 75050
817.891.1790
mouath@gmail.com

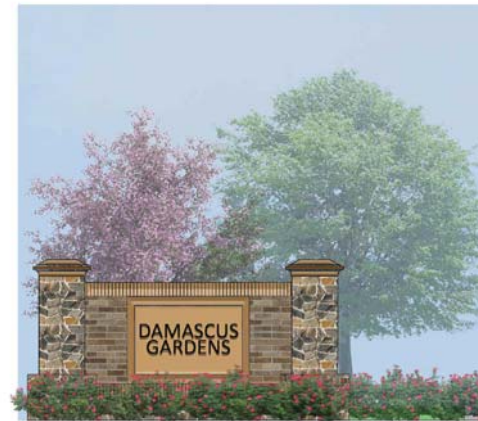
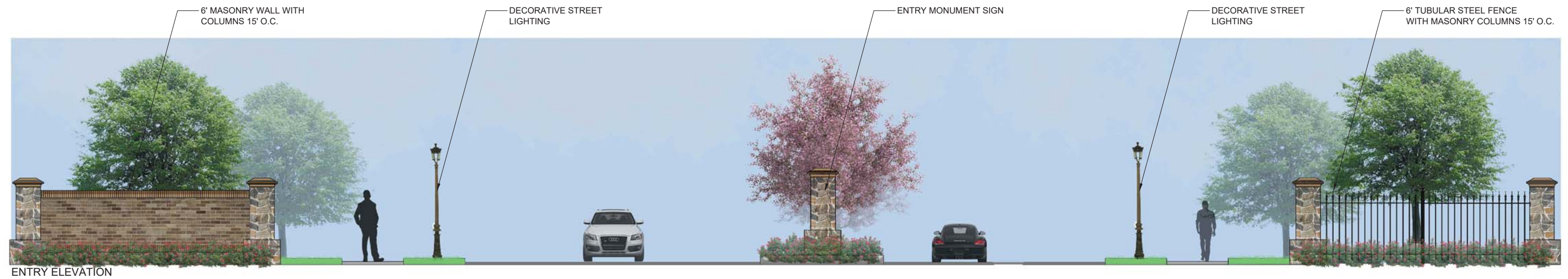


EXHIBIT C
ZC#21-003
ENHANCED ENTRYWAY
PLAN

PAGE 2 OF 2
DAMASCUS GARDENS
2349 N. HOLLAND RD
City of Mansfield
Tarrant County, Texas