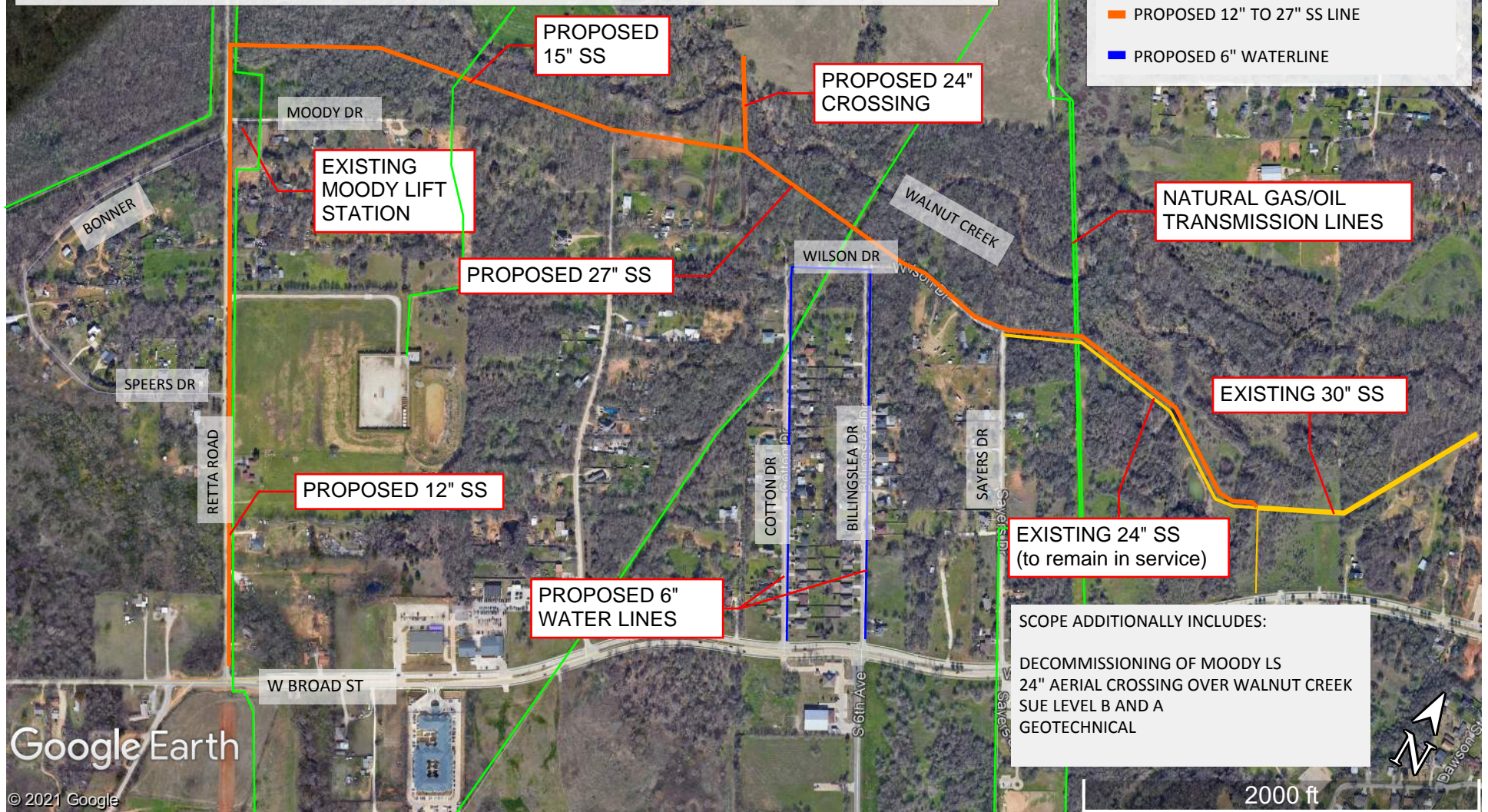


CITY OF MANSFIELD - WALNUT CREEK SANITARY SEWER INTERCEPTOR PROJECT

APPROXIMATELY 9600 LF NEW 12" TO 27" SS LINE
APPROXIMATELY 4600 LF NEW 6" WATERLINE

LEGEND

- EXISTING SS LINES
- EXISTING GAS/OIL TRANSMISSION LINES
- PROPOSED 12" TO 27" SS LINE
- PROPOSED 6" WATERLINE



6567.002