



5/3/2021

Andrew Bogda, AICP

Planner I

City of Mansfield

1200 E Broad St.

Mansfield, TX 76063

Dear Andrew,

SBA Network Services owns and operates a Telecommunications Tower located at CubeSmart LP, 1991 Country Club Road, Mansfield, TX. SBA is in the business of renting space on this tower to the different Wireless carrier companies such as AT&T and T-Mobile. SBA has been approached by Dish Wireless to also locate their antennas on the tower but the available space for their installation was proven to not be high enough to adequately serve their customers. In an effort to keep the number of new tower builds to a minimum, SBA is proposing to increase the height of this existing tower by 10' to accommodate the Dish Wireless installation.

In addition to this letter, I am submitting plans to show the existing and the proposed elevation for review by the Zoning Board of Adjustments along with the property owners representation form. Please let me know if anything else is needed to process this application.

Respectfully submitted,

**Janice Manley**

*Site Development Specialist II*

**SBA Network Services**

1255 W. 15<sup>th</sup> St.

Plano, TX 75075

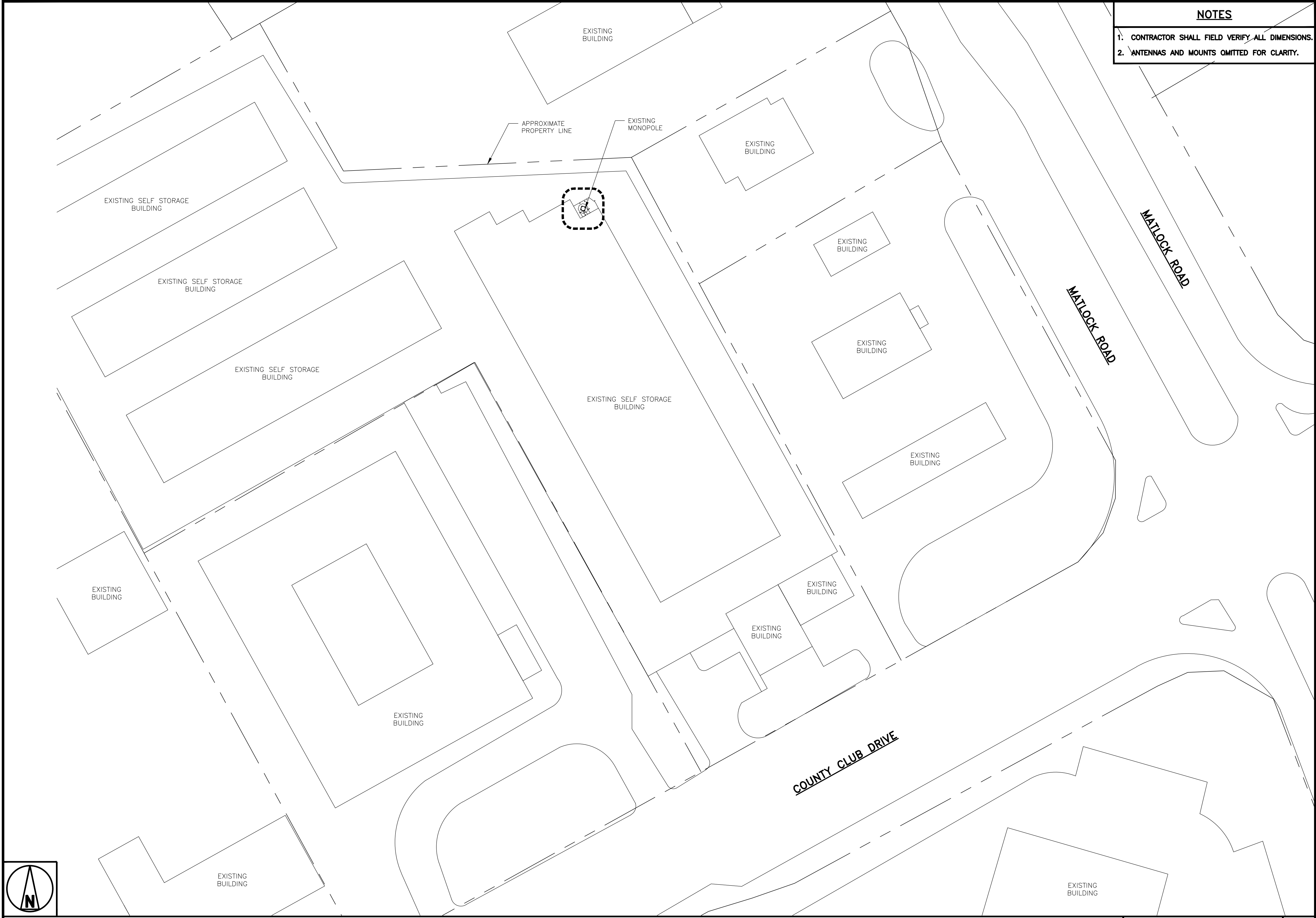
505.250.6389 + **C**

[jmanley@sbsite.com](mailto:jmanley@sbsite.com)



# T-1





- NOTES
1. CONTRACTOR SHALL FIELD VERIFY ALL DIMENSIONS.

2. ANTENNAS AND MOUNTS OMITTED FOR CLARITY.

dish

wireless.

5701 SOUTH SANTA FE DRIVE  
LITTLETON, CO 80120

PM&A

1000 HOLCOMB WOODS PKWY,  
SUITE 210  
ROSWELL, GA 30076  
678-280-2325

NOT TO BE USED  
FOR CONSTRUCTION

IT IS A VIOLATION OF LAW FOR ANY PERSON,  
UNLESS THEY ARE ACTING UNDER THE DIRECTION  
OF A LICENSED PROFESSIONAL ENGINEER,  
TO ALTER THIS DOCUMENT.

DRAWN BY:	CHECKED BY:	APPROVED BY:
SR	SE	SA

RFDS REV #: ---

PRELIMINARY  
DOCUMENTS

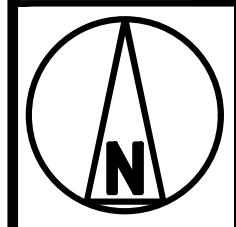
SUBMITTALS		
REV	DATE	DESCRIPTION
A	04/28/2021	ISSUED FOR REVIEW

A&E PROJECT NUMBER  
21SBAD3N-021

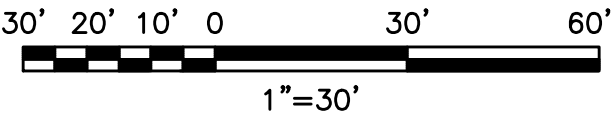
DISH WIRELESS, LLC.  
PROJECT INFORMATION  
  
DADAL00449A  
1991 COUNTY CLUB ROAD  
MANSFIELD, TX. 76063

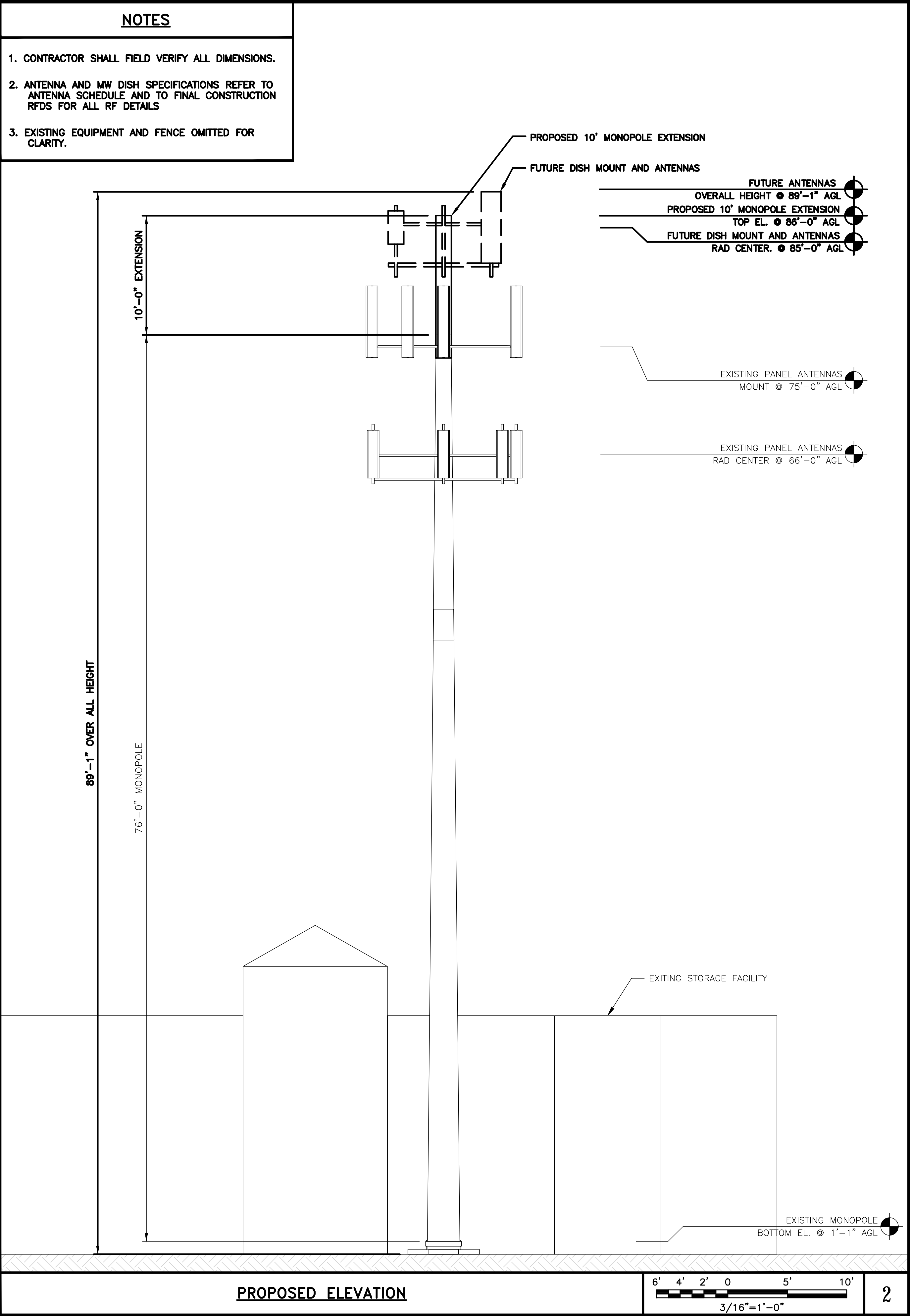
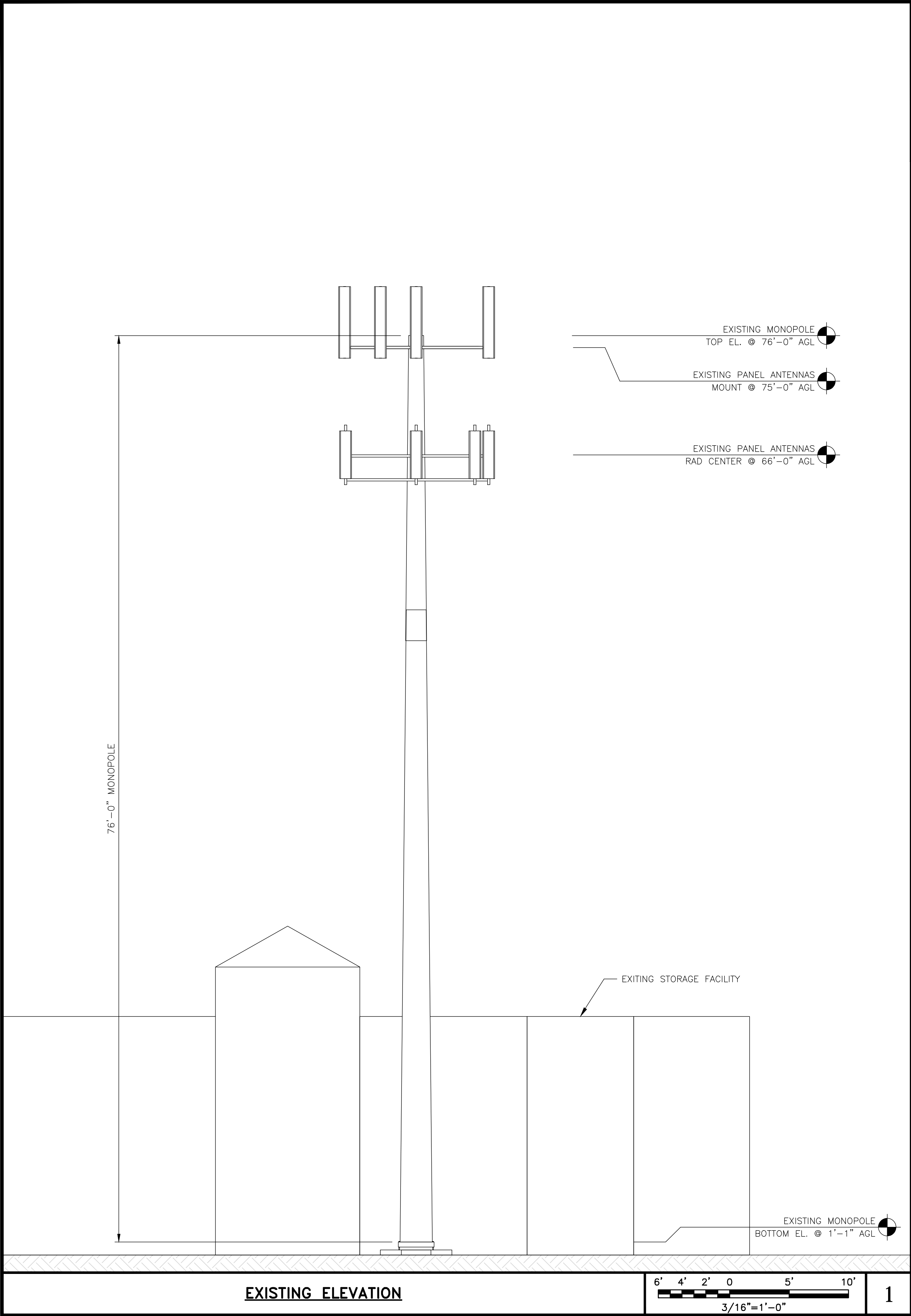
SHEET TITLE  
OVERALL AND ENLARGED  
SITE PLAN

SHEET NUMBER  
  
A-1



OVERALL SITE PLAN





5701 SOUTH SANTA FE DRIVE  
LITTLETON, CO 80120



1000 HOLCOMB WOODS PKWY,  
SUITE 210  
ROSWELL, GA 30076  
678-280-2325

NOT TO BE USED  
FOR CONSTRUCTION

IT IS A VIOLATION OF LAW FOR ANY PERSON,  
UNLESS THEY ARE ACTING UNDER THE DIRECTION  
OF A LICENSED PROFESSIONAL ENGINEER,  
TO ALTER THIS DOCUMENT.

DRAWN BY: CHECKED BY: APPROVED BY:

SR SE SA

RFDS REV #: ---

PRELIMINARY  
DOCUMENTS

SUBMITTALS		
REV	DATE	DESCRIPTION
A	04/28/2021	ISSUED FOR REVIEW

A&E PROJECT NUMBER  
21SBAD3N-021

DISH WIRELESS, LLC.  
PROJECT INFORMATION  
  
DADAL00449A  
1991 COUNTY CLUB ROAD  
MANSFIELD, TX. 76063

SHEET TITLE  
ELEVATION, ANTENNA  
LAYOUT AND SCHEDULE

SHEET NUMBER  
**A-2**



1991 Country Club Dr, Mansfield X

Q

