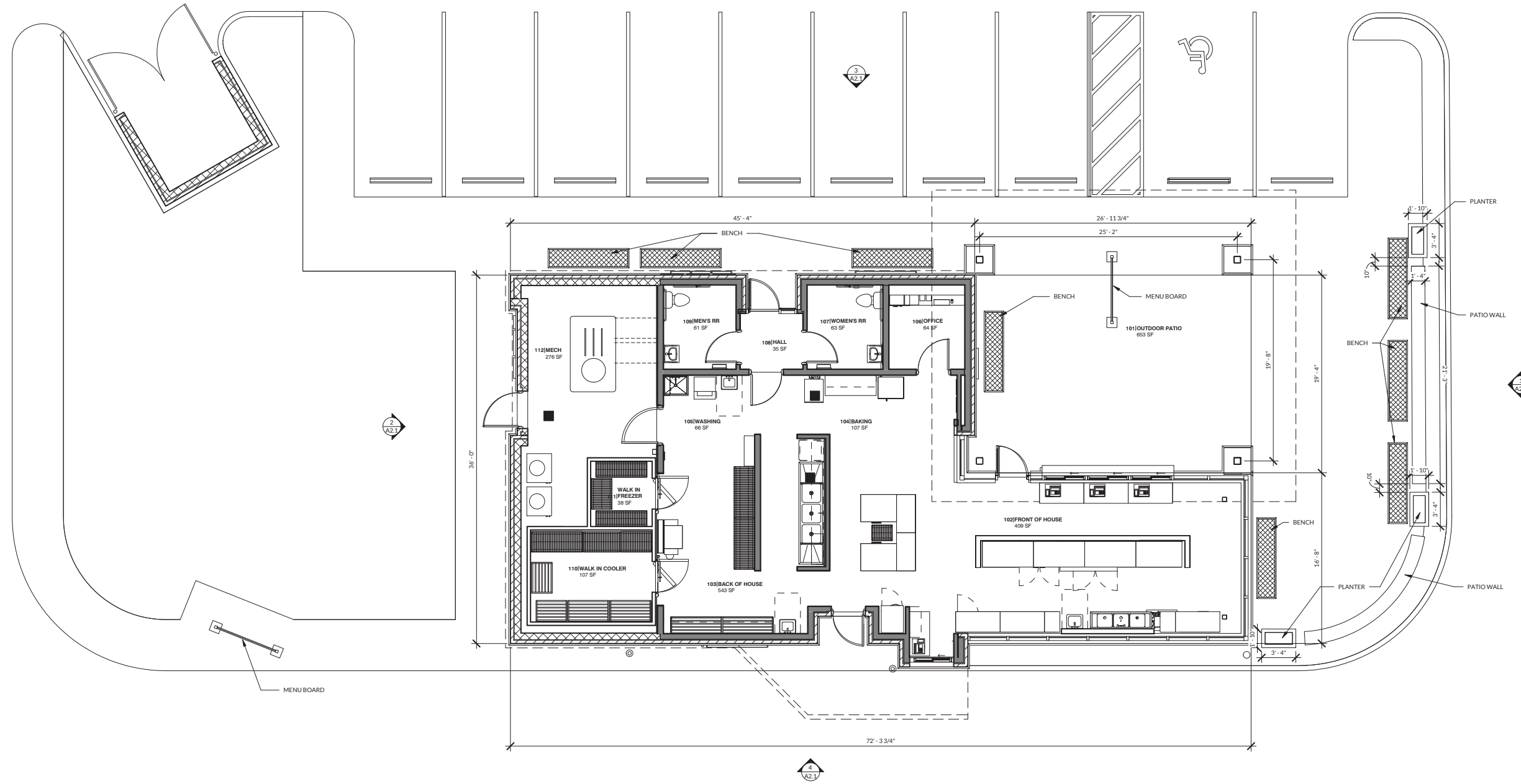


1 GROUND LEVEL PLAN
3/16" = 1'-0"



ANDY'S FROZEN CUSTARD
MANSFIELD, TX

3121 E. BROAD ST.,
MANSFIELD, TX 76063

INTERIM REVIEW ONLY
These documents are incomplete, and are released for interim review only and are not intended for regulatory approval, bidding, permit, or construction purposes.

ARCHITECT OF RECORD:
NAME: ADAM KREHER
LICENSE NO. 23507

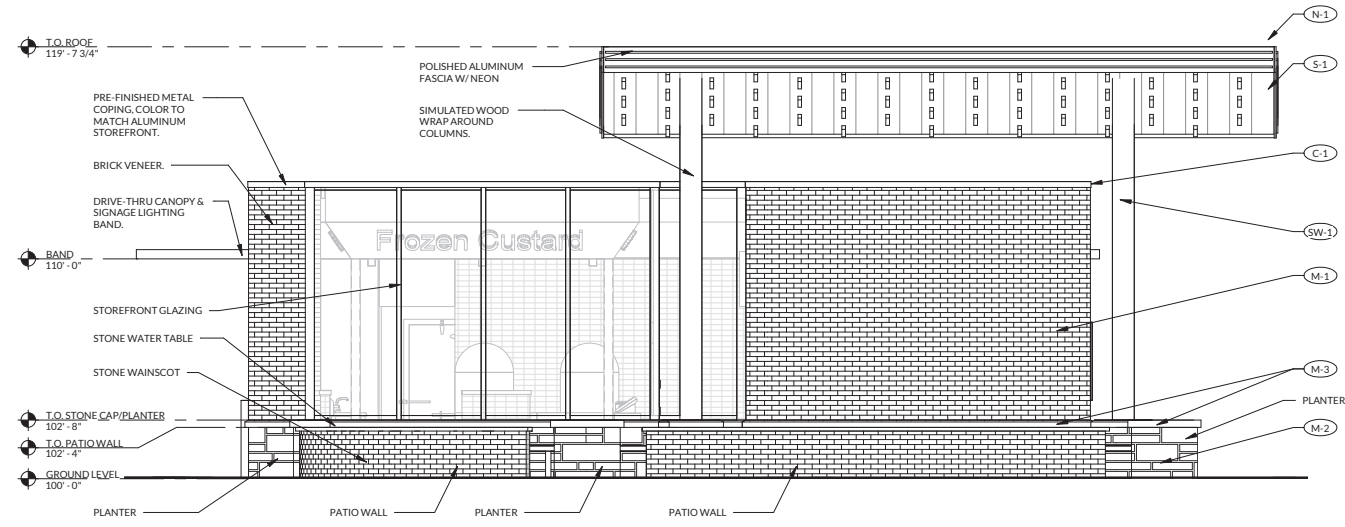
PROJECT NUMBER:
21192.AFCMTX

REVISION:

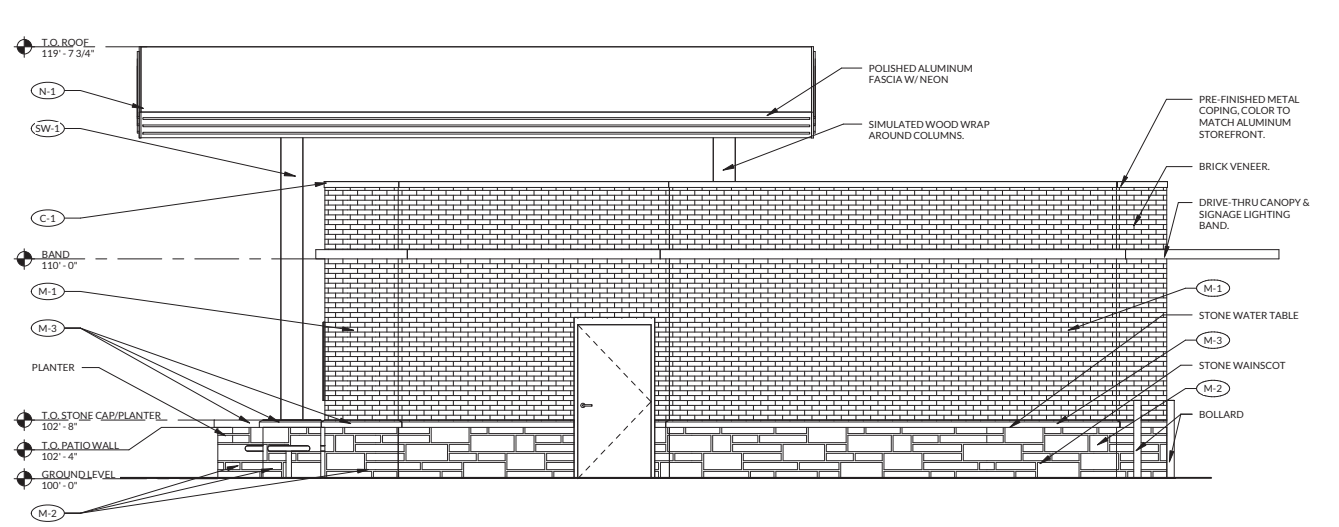
ZC#21-012
EXHIBIT C

A1.1
FLOOR PLAN

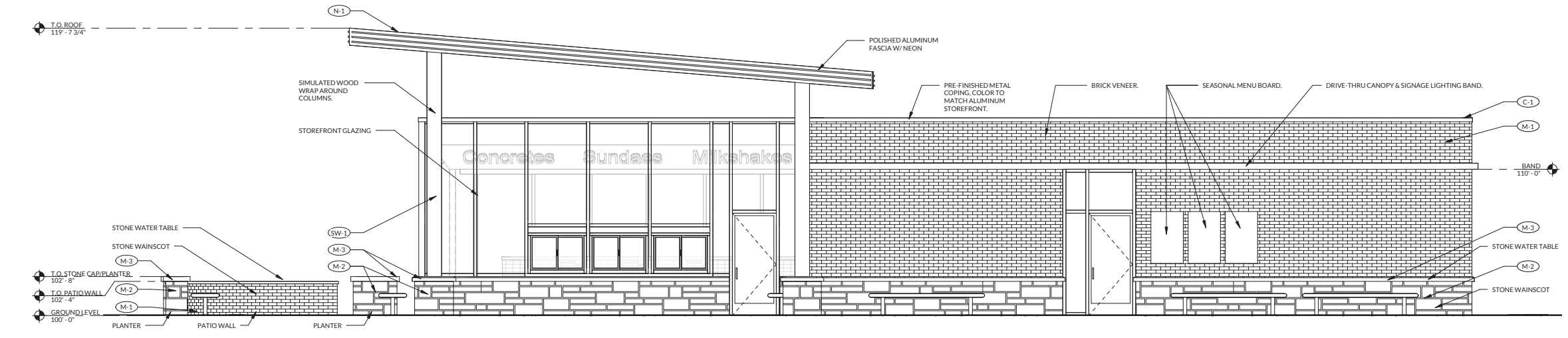
DATE: JULY 14, 2021



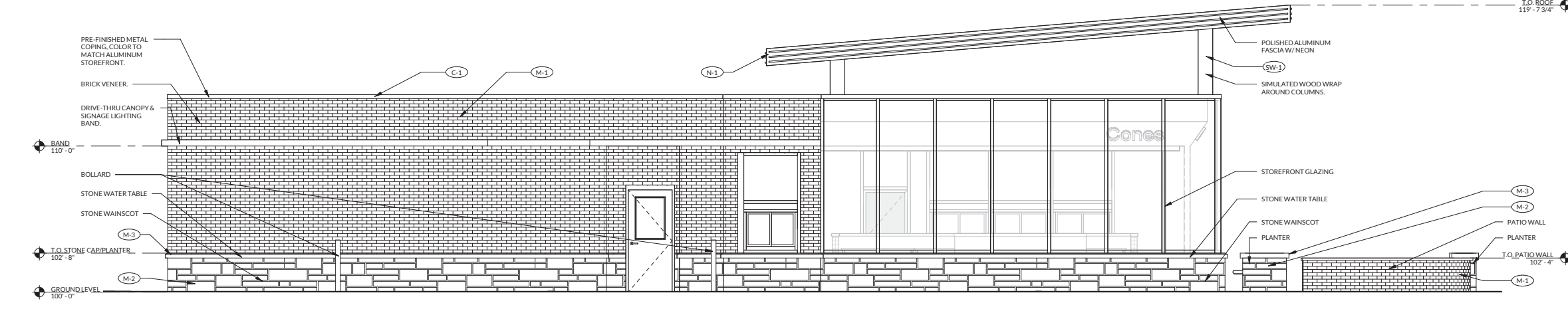
1 SOUTH ELEVATION
1/4" = 1'-0"



2 NORTH ELEVATION
1/4" = 1'-0"



3 EAST ELEVATION
1/4" = 1'-0"



4 WEST ELEVATION
1/4" = 1'-0"

EXTERIOR FINISH LEGEND

TAG NO.	DESCRIPTION
C-1	COPING TYPE 1: PRE-FINISHED METAL PARAPET CAP. COLOR TO MATCH ALUMINUM SOFFIT
FC-1	FIBER CEMENT TYPE 1: 5/16" JAMES HARDIE PANEL COLOR PLUS EXTERIOR. 4'-0" x 10'-0" SECTIONS ON 3/4" BATTONS. COLOR: LIGHT MIST, SMOOTH FINISH.
M-1	MASONRY TYPE 1: ACME BRICK, COLOR: RUSSET. MORTAR EQ. TO SOLOMON COLOR 20X.
M-2	STONE VENEER (WAINSCOT): EL DORADO STONE VENEER CLIFFSTONE, COLOR: MONTECITO
M-3	MASONRY TYPE 3 (WAINSCOT CAP): ACME STONE - NATURAL LEUDERS LIMESTONE.
N-1	POLISHED ALUMINUM FASCIA BY SIGN MANUFACTURER.
SW-1	COLUMN WRAP: SIMULATED WOOD
S-1	SOFFIT TYPE 1: SIMULATED WOOD

MATERIAL TAKE OFF AND PERCENTAGE PER ELEVATION

MATERIAL	SOUTH	NORTH	EAST	WEST
BRICK	198	399	455	440
STONE	102	93	171	184
SIMULATED WOOD	31	15	29	7
TOTAL ELEVATION SQFT MINUS DOORS & GLAZING	331	506	655	631
% BRICK	60%	79%	70%	70%
% STONE	31%	19%	26%	29%
% SIMULATED WOOD	10%	3%	4%	1%

MATERIAL TOTAL TAKE OFF & PERCENTAGE FOR WHOLE BUILDING

MATERIAL	SOUTH	NORTH	EAST	WEST	TOTALS FOR % OF TOTAL BLDG
BRICK	198	399	455	440	1,492 SF
STONE	102	93	171	184	550 SF
SIMULATED WOOD	31	15	29	7	82 SF
TOTAL ELEVATION SQFT	549	533	1,004	928	3,014 SF
% BRICK	36%	75%	45%	47%	50%
% STONE	19%	17%	17%	20%	18%
% SIMULATED WOOD	6%	3%	3%	1%	3%

GLAZING TAKE OFF AND PERCENTAGE PER ELEVATION & TOTAL

MATERIAL	SOUTH	NORTH	EAST	WEST	TOTALS FOR % OF TOTAL BLDG
SQFT OF GLAZING	217	N/A	338	320	875
TOTAL ELEVATION SQFT	549	533	1,004	928	3,014
% GLAZING	40%	N/A	34%	35%	29%



ANDY'S FROZEN CUSTARD
MANSFIELD, TX

3121 E. BROAD ST.
MANSFIELD, TX 76063

INTERIM REVIEW ONLY

These documents are incomplete, and are released for interim review only and are not intended for regulatory approval, bidding, permit, or construction purposes.

ARCHITECT OF RECORD:
NAME: ADAM KREHER
LICENSE NO. 23507

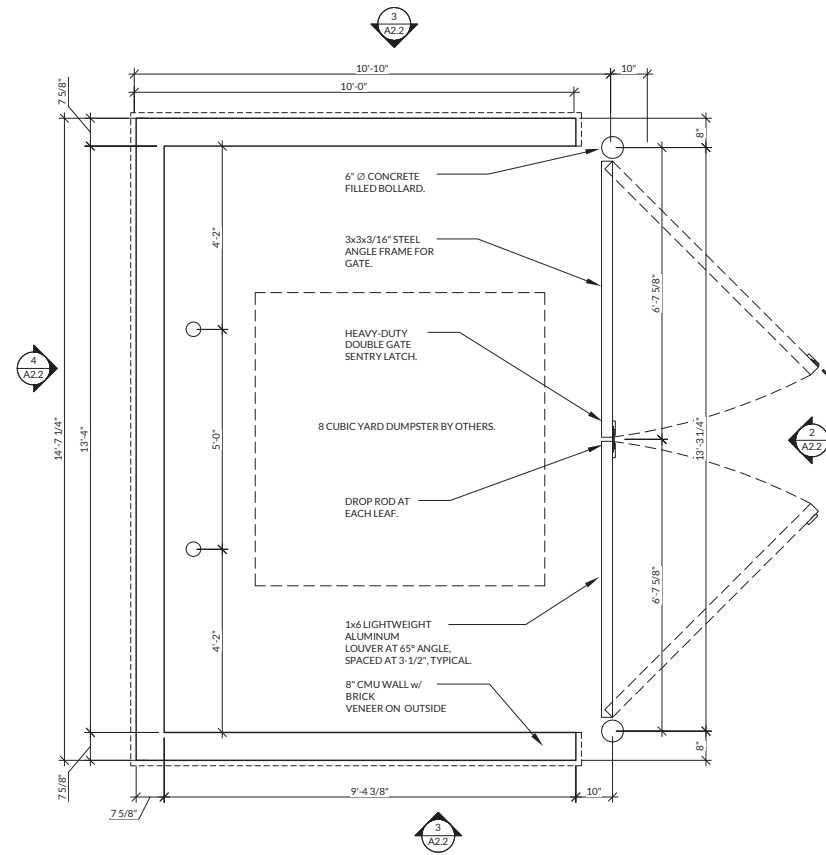
PROJECT NUMBER:
21192.AFCMTX

REVISION:

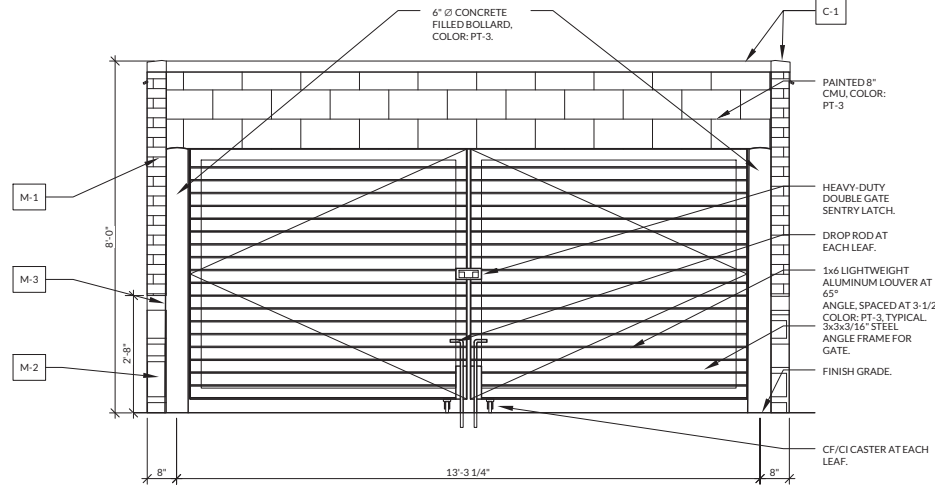
A2.1
EXTERIOR ELEVATIONS

DATE: JULY 29, 2021

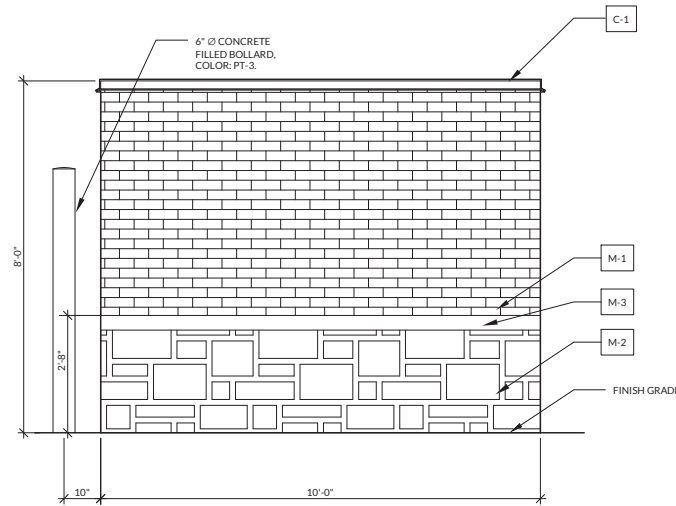
ZC#21-012
EXHIBIT C



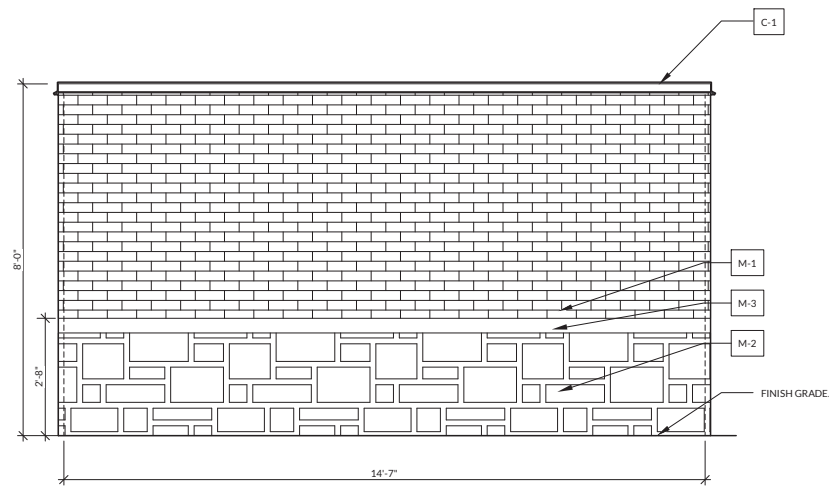
1 TRASH ENCLOSURE PLAN
1/2" = 1'-0"



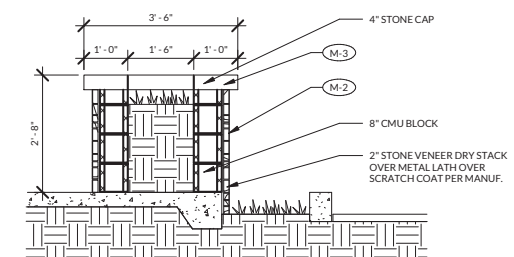
2 TRASH ENCLOSURE - FRONT ELEVATION
1/2" = 1'-0"



3 TRASH ENCLOSURE - SIDE ELEVATION
1/2" = 1'-0"



4 TRASH ENCLOSURE - REAR ELEVATION
1/2" = 1'-0"



5 PLANTER DETAIL
1/2" = 1'-0"



ANDY'S FROZEN CUSTARD
MANSFIELD, TX

3121 E. BROAD ST.,
MANSFIELD, TX 76063

INTERIM REVIEW ONLY
These documents are incomplete, and are released for interim review only and are not intended for regulatory approval, bidding, permit, or construction purposes.

ARCHITECT OF RECORD:
NAME: ADAM KREHER
LICENSE NO. 23507

PROJECT NUMBER:
21192_AFCMTX

REVISION:



1 SOUTH ELEVATION
1/4" = 1'-0"



2 NORTH ELEVATION
1/4" = 1'-0"



3 EAST ELEVATION
1/4" = 1'-0"



4 WEST ELEVATION
1/4" = 1'-0"

EXTERIOR FINISH LEGEND	
TAG NO.	DESCRIPTION
C-1	COPING TYPE 1: PRE-FINISHED METAL PARAPET CAP. COLOR TO MATCH ALUMINUM SOFFIT
FC-1	FIBER CEMENT TYPE 1: 5'-18" JAMES HARDIE PANEL COLOR PLUS EXTERIOR 4'-0" x 10'-0" SECTIONS ON 3/4" BATTONS COLOR: LIGHT MIST, SMOOTH FINISH
M-1	MASONRY TYPE 1: ACME BRICK, COLOR: RUSSET. MORTAR EQ. TO SOLOMON COLOR 20X
M-2	STONE VENEER (WAINSCOT): EL DORADO STONE VENEER CLIFFSTONE. COLOR: MONTECITO
M-3	MASONRY TYPE 3 (WAINSCOT CAP): ACME STONE - NATURAL LEUDERS LIMESTONE.
N-1	POLISHED ALUMINUM FASCIA BY SIGN MANUFACTURER.
SW-1	COLUMN WRAP: SIMULATED WOOD
S-1	SOFFIT TYPE 1: SIMULATED WOOD

MATERIAL TAKE OFF AND PERCENTAGE PER ELEVATION				
MATERIAL	SOUTH	NORTH	EAST	WEST
BRICK	198	399	455	440
STONE	102	93	171	184
SIMULATED WOOD	31	15	29	7
TOTAL ELEVATION SQFT MINUS DOORS & GLAZING	331	506	655	631
% BRICK	60%	79%	70%	70%
% STONE	31%	19%	26%	29%
% SIMULATED WOOD	10%	3%	4%	1%

MATERIAL TOTAL TAKE OFF & PERCENTAGE FOR WHOLE BUILDING					
MATERIAL	SOUTH	NORTH	EAST	WEST	TOTALS FOR % OF TOTAL BLDG
BRICK	198	399	455	440	1,492 SF
STONE	102	93	171	184	550 SF
SIMULATED WOOD	31	15	29	7	82 SF
TOTAL ELEVATION SQFT	549	533	1,004	928	3,014 SF
% BRICK	36%	75%	45%	47%	50%
% STONE	19%	17%	17%	20%	18%
% SIMULATED WOOD	6%	3%	3%	1%	3%

GLAZING TAKE OFF AND PERCENTAGE PER ELEVATION & TOTAL					
MATERIAL	SOUTH	NORTH	EAST	WEST	TOTALS FOR % OF TOTAL BLDG
SQ FT OF GLAZING	217	N/A	338	320	875
TOTAL ELEVATION SQFT	549	533	1,004	928	3,014
% GLAZING	40%	N/A	34%	35%	29%

INTERIM REVIEW ONLY
These documents are incomplete, and are released for interim review only and are not intended for regulatory approval, bidding, permit, or construction purposes.

ARCHITECT OF RECORD:
NAME: ADAM KREHER
LICENSE NO. 23507

PROJECT NUMBER:
21192_AFCMTX

REVISION:



RENDER 1

MANSFIELD, TX

3121 E. BROAD ST,
MANSFIELD, TX 76063

DATE: JULY 29, 2021

ZC#21-012
EXHIBIT C



ARCHITECTURAL CORPORATION - MISSOURI LICENSE NUMBER 2010011427
116 N. 2ND AVENUE ~ OZARK, MISSOURI 65721 ~ 417-581-8889



RENDER 2

MANSFIELD, TX

3121 E. BROAD ST,
MANSFIELD, TX 76063

DATE: JULY 29, 2021

ZC#21-012
EXHIBIT C



ARCHITECTURAL CORPORATION - MISSOURI LICENSE NUMBER 2010011427
116 N. 2ND AVENUE ~ OZARK, MISSOURI 65721 ~ 417-581-8889



RENDER 3

MANSFIELD, TX

3121 E. BROAD ST,
MANSFIELD, TX 76063

DATE: JULY 29, 2021

ZC#21-012
EXHIBIT C



ARCHITECTURAL CORPORATION - MISSOURI LICENSE NUMBER 2010011427
116 N. 2ND AVENUE ~ OZARK, MISSOURI 65721 ~ 417-581-8889