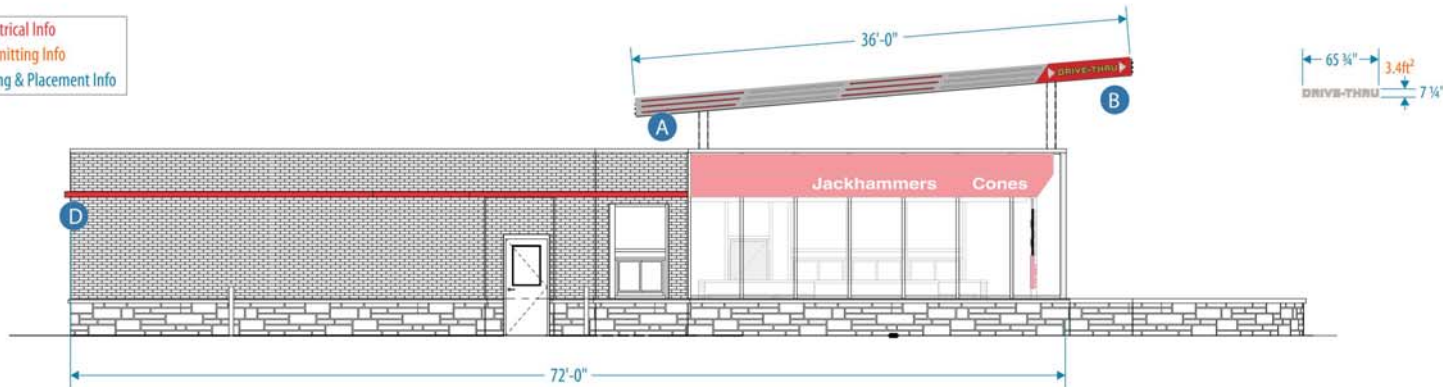


PINNACLE SIGN
GROUP
VISUAL BRANDING THAT MAKES A DIFFERENCE

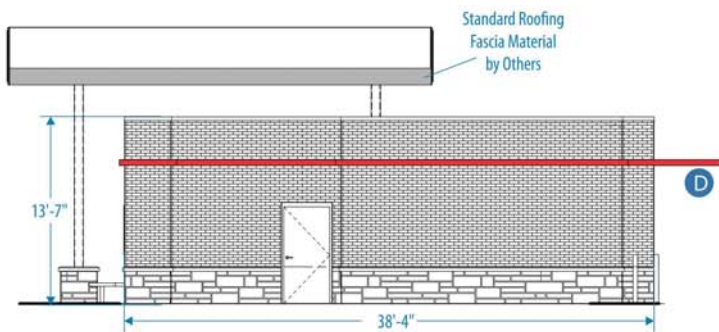


SOUTHWEST ELEVATION / SCALE: 1" = 9'

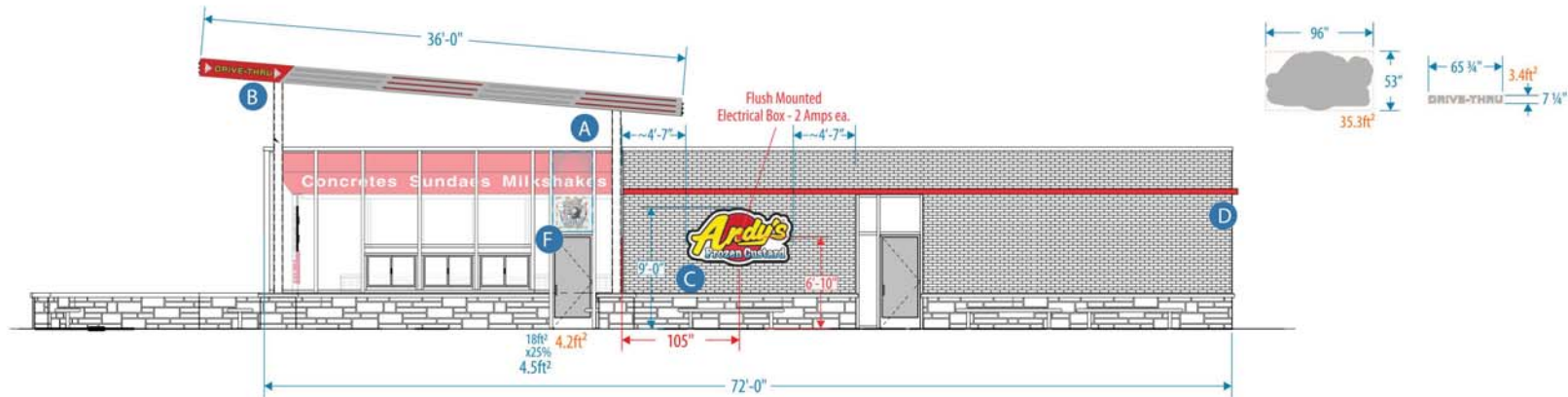
- Electrical Info
- Permitting Info
- Sizing & Placement Info



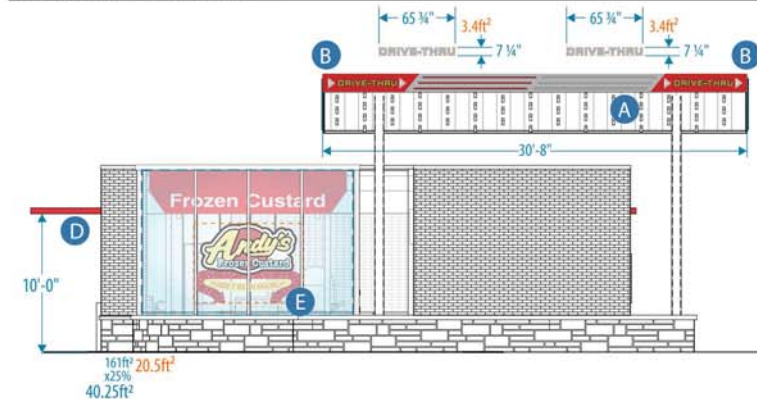
NORTHWEST ELEVATION / SCALE: 1" = 9'



NORTHEAST ELEVATION / SCALE: 1" = 9'



SOUTHEAST ELEVATION / SCALE: 1" = 9'



PINNACLE SIGN GROUP

ANDY'S FROZEN CUSTARD

CUSTOMER

0712-21-SITE-1

DRAWING NUMBER

AS SHOWN

ELEVATION

07.12.21

DATE REVISED

BUDDY HINDS

DESIGNER

TIM SWAIM

PROJECT MANAGER

MANSFIELD, TX

LOCATION

SCOPE OF WORK

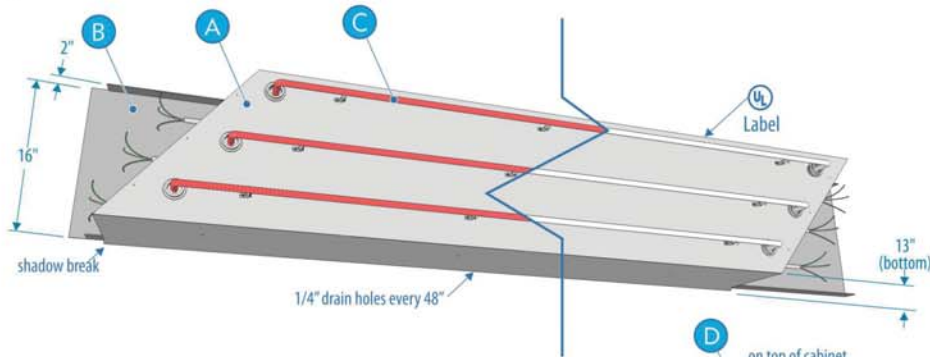
Exterior Signage

- A Neon Illuminated Fascia (AFC-STND-FASC-1)
- B Neon Illuminated Corner Fascia Cabinets (AFC-STND-FASC-2)
- C Pan Embossed Wall Logo (0712-21-EWAL-1)
- D LED Illuminated Reverse Channel Accent Lighting (1201-20-SPEC-1)

Window Signage

- E Hanging Neon Andy's Window Sign (0712-21-IWAL-1)
- F Neon "Sprecher" Sign (AFC-STND-IWAL-3)

1 Exploded View - scale: NTS



ELECTRICAL REQUIREMENTS

120V x (5) SEPARATE RUNS FOR 3-POINT ANIMATION

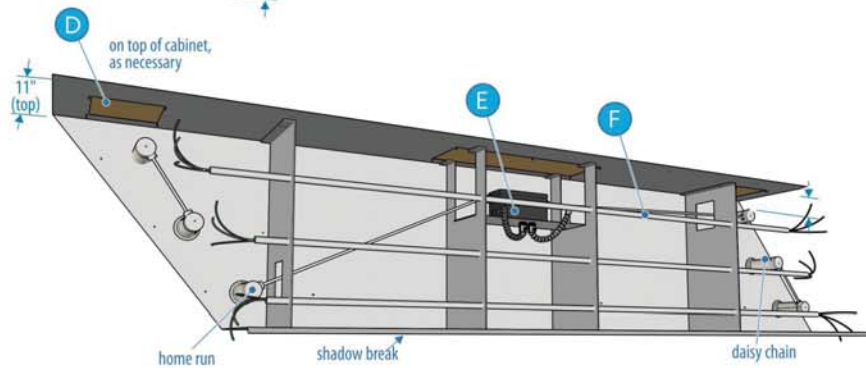
ELECTRICAL REQUIREMENTS

ARCHITECT SHALL COORDINATE ALL FLASHING DETAILS TO PROVIDE WEATHER TIGHT SEAL BETWEEN NEON FASCIA AND ROOF SYSTEM

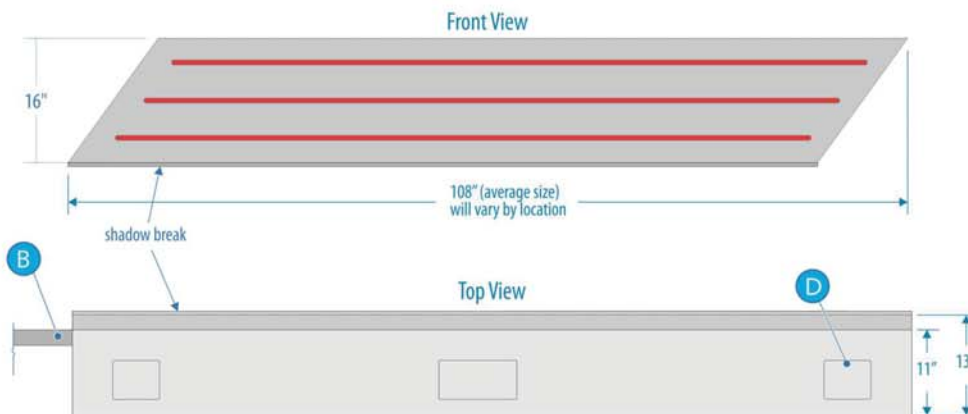
AFC DISCLAIMER - FASCIA

The lighted fascia system PSG is providing is purely decorative and NOT to be made part of a waterproof envelop design.

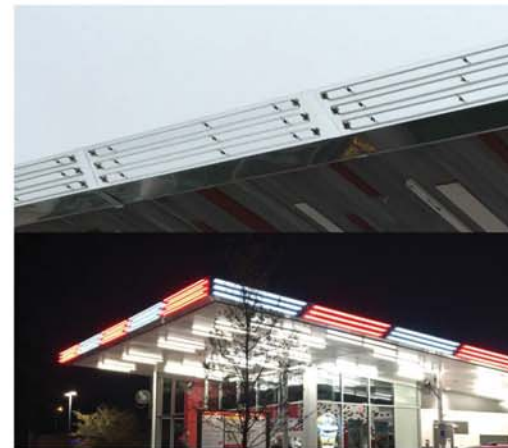
PSG will NOT be responsible for water infiltration and resulting building damage as it relates to the decorative fascia system. Decorative fascia is NOT designed to be water proof and includes weep holes at the bottom for water to escape; building envelope to be waterproof outside of our assembly.



2 Orthographic Views: scale: 3/4" = 1'



3 Example Views: scale: NTS



ANDY'S FROZEN CUSTARD

CUSTOMER

AFC-STND-FASC-1

DRAWING NUMBER

AS SHOWN

ELEVATION

03.06.20

DATE REVISED

BUDDY HINDS

DESIGNER

TIM SWAIM

PROJECT MANAGER

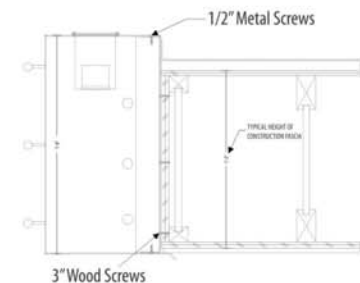
ALL

LOCATION

SCOPE OF WORK

- A .040 Polished Aluminum Face
 - Finish - Bright Clear Anodized Aluminum
- B .063 Aluminum Backpan
- C Neon Illuminated Glass Tubes w/ Tube Supports
 - Clear Red 12mm Neon
 - Snow White 12mm Neon
- D Access Panel
- E Transformer
- F 3/8" Flexible M/C Tube

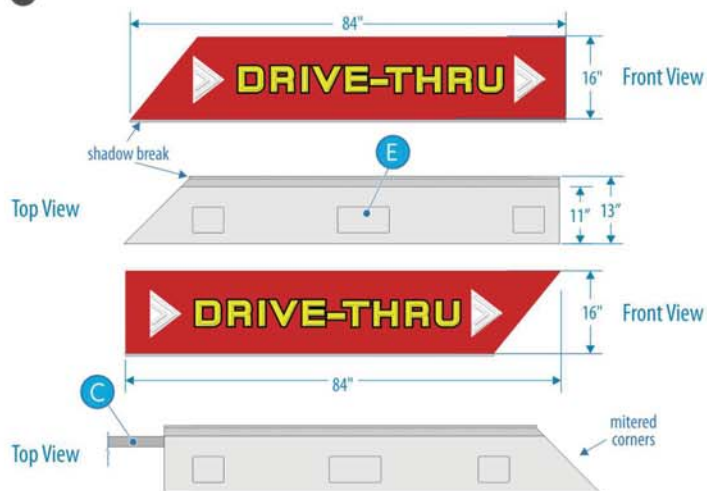
ATTACHMENT METHOD



1 Exploded View - scale: NTS



2 Orthographic Views - scale: 1/2"=1'



3 Example View - scale: NTS



ANDY'S FROZEN CUSTARD
CUSTOMER

AFC-STND-FASC-2 **AS SHOWN**
DRAWING NUMBER ELEVATION

03.06.20
DATE REVISED

BUDDY HINDS **TIM SWAIM**
DESIGNER PROJECT MANAGER

ALL
LOCATION

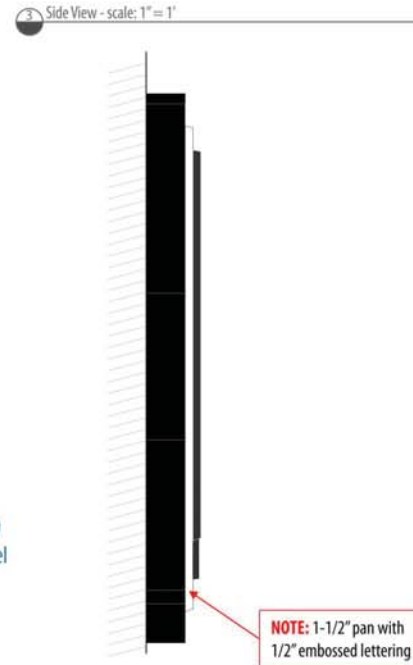
SCOPE OF WORK

- A Painted .040 Aluminum Face
 - Polyc - To Match PMS 186 (Glass)
- B Neon Illuminated Glass Tubes w/ Tube Supports
 - Clear Red 12mm Neon
 - Bright Yellow 12mm Neon
- C .063 Aluminum Backpan
- D Cut Vinyl Applied to Face
 - Vinyl - 3M Black (Opaque)
 - Vinyl - 3M White (Opaque)
 - Vinyl - Oracal Yellow (Opaque)
- E Access Panel
- F Transformer
- G 3/8" Flexible M/C Tube

ATTACHMENT METHOD



EXHIBIT E -ZC#21-012
PAGE 4 OF 16



ANDY'S FROZEN CUSTARD

CUSTOMER

0712-21-EWAL-1 AS SHOWN

DRAWING NUMBER ELEVATION

07.12.21

DATE REVISED

BUDDY HINDS TIM SWAIM

DESIGNER PROJECT MANAGER

MANSFIELD, TX

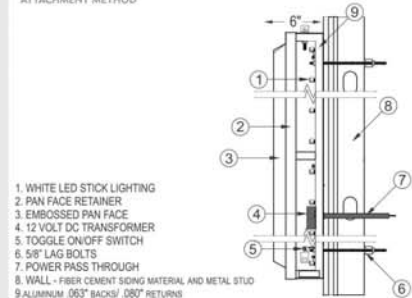
LOCATION

SCOPE OF WORK

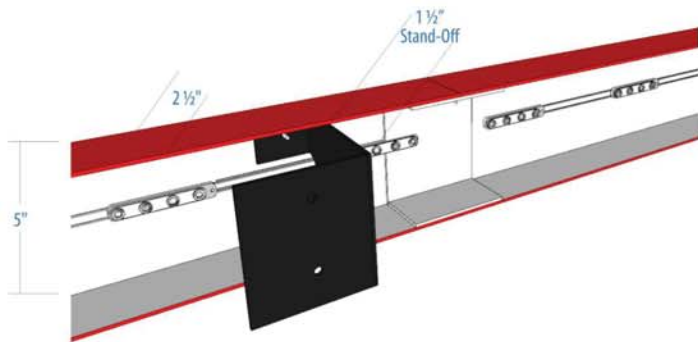
Internally Illuminated Panfaced Wall Sign

- A Internally LED Illuminated Contour Cabinet
 - Paint - Black
- B Multi-Level Embossed Pan Face (Gloss); Back Spray-Painted (2nd Surface)
 - See Logo Chart for Color Specs
- C Mounted Flush

ATTACHMENT METHOD



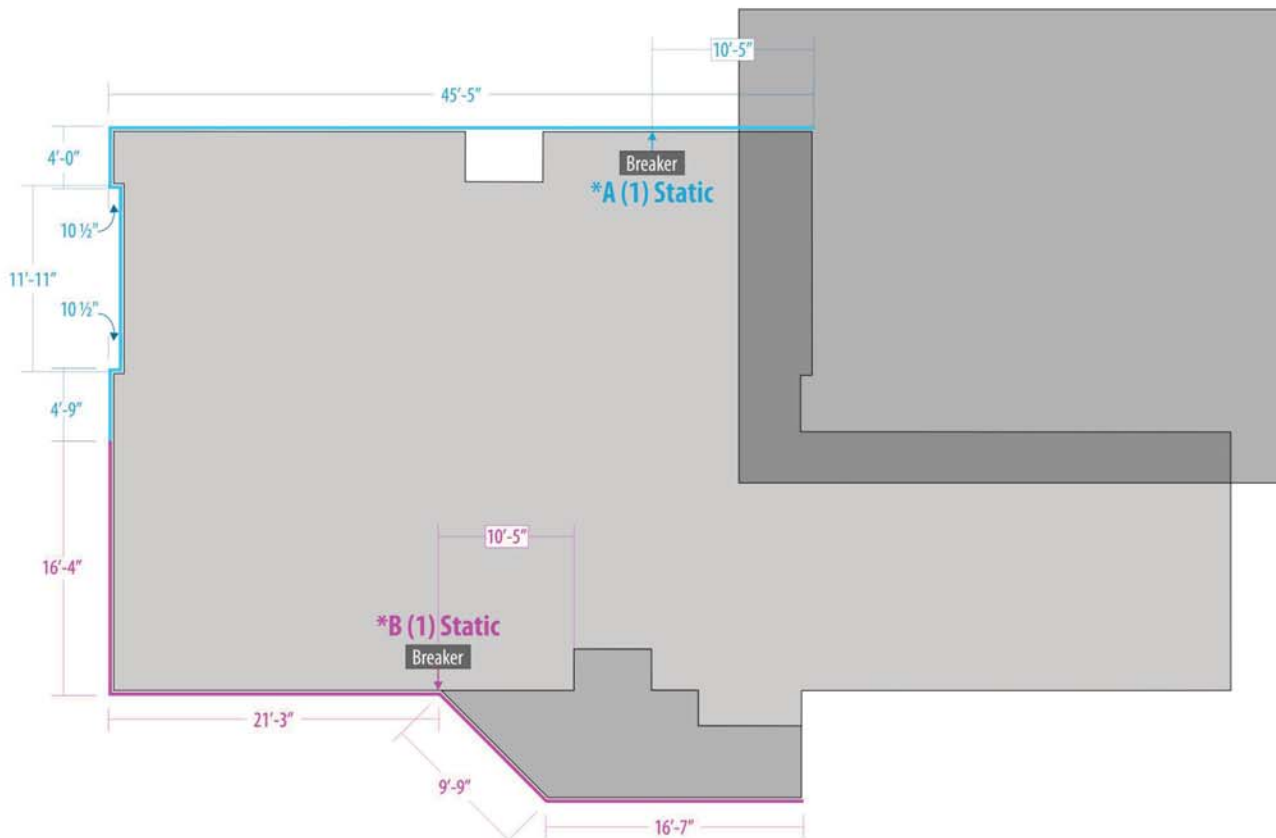
ATTACHMENT VIEW SCALE: NTS



ILLUMINATED VIEW SCALE: NTS



OVERHEAD VIEW SCALE: 1/8" = 1'



THIS DRAWING OR ANY COPY IS THE PROPERTY OF PINNACLE SIGN GROUP UNLESS PURCHASED OR WRITTEN CONSENT FROM PSG © 2018 PINNACLE SIGN COMPANY/ UNAUTHORIZED USE OF THIS WORK FOR ANY PURPOSE WILL RESULT IN LEGAL ACTION.

PINNACLE SIGN GROUP

ANDY'S FROZEN CUSTARD

CUSTOMER

0712-21-SPEC-1

DRAWING NUMBER

AS SHOWN

ELEVATION

07.12.21

DATE REVISED

BUDDY HINDS

PROJECT MANAGER

TIM SWAIM

DESIGNER

MANSFIELD, TX

LOCATION

SCOPE OF WORK

Reverse Channel Light Stripe

- A - Painted .125" Aluminum Cladding
 - O - Painted inside white
 - B - Mounting brackets Black (Satin)
 - R - Andy's red (gloss)

Renderings Typical
Pending Architectural Drawings

Section A - (1) Circuit; 20 Amps

Section B - (1) Circuit; 20 Amps

Total Amperage = 40 Amps



EXHIBIT E -ZC#21-012
PAGE 6 OF 16

ANDY'S FROZEN CUSTARD/LOCATIONS/TEXAS/3121 E. BROAD STREET, MANSFIELD, TX 76063/ART/RENDERINGS/

A

MONUMENT (0712-21-MONU-1)

Masonry Structure; Illuminated Pan-Face Logo; Changeable Copy Board; Address Number FCOs

B

DIRECTIONAL SIGN (0712-21-DIRE-1)

3' Height; 2-Sided Illuminated Directional

C

1-SIDED MENU BOARD (AFC-STND-MENU-1-SS)

3 Over 3 Panel Standard Menu; "Order at Window" Sign Panel w/ Bracket; Located at Drive-Thru

D






2-SIDED MENU BOARD (AFC-STND-MENU-1-DS)

3 Over 3 Panel Standard Menu; Located at Patio

E

CLEARANCE SIGN (AFC-STND-BAR-1)

9' Clearance Standard Clearance Bar; "No Trailers" Sign Panel



SITE MAP SCALE: 1" = 25'

THIS DRAWING OR ANY COPY IS THE PROPERTY OF PINNACLE SIGN GROUP UNLESS PURCHASED OR WRITTEN CONSENT FROM PSG © 2021 PINNACLE SIGN COMPANY/ UNAUTHORIZED USE OF THIS WORK FOR ANY PURPOSE WILL RESULT IN LEGAL ACTION.

ANDY'S FROZEN CUSTARD				
CUSTOMER				
0712-21-SITE-1	AS SHOWN			
DRAWING NUMBER	ELEVATION			
07.12.21				
DATE REVISED				
BUDDY HINDS	TIM SWAIM			
DESIGNER	PROJECT MANAGER			
MANSFIELD, TX				
LOCATION				
SIGN SCHEDULE		QUANTITY		
A	2-Sided Monument (0712-21-MONU-1)	1		
B	2-Sided Illuminated Directional (AFC-STND-DIRE-1)	2		
C	1-Sided Menu Board (AFC-STND-MENU-1-SS)	1		
D	2-Sided Menu Board (AFC-STND-MENU-1-DS)	1		
E	Clearance Bar (AFC-STND-BAR-1)	1		

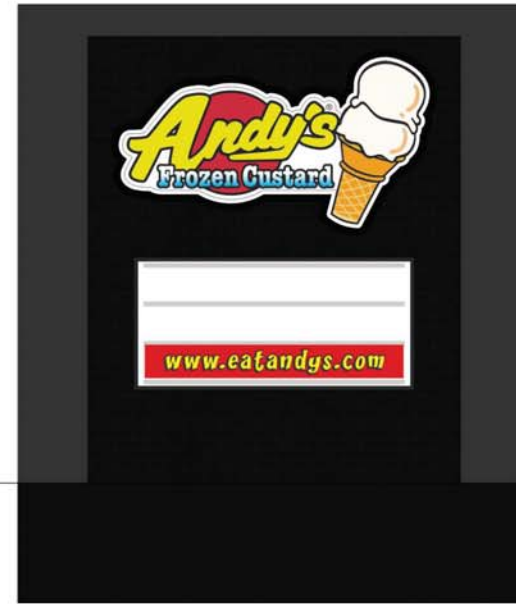
EXHIBIT E -ZC#21-012
PAGE 7 OF 16

\\ANDY'S FROZEN CUSTARD\\LOCATIONS\\TEXAS\\3121 E. BROAD STREET, MANSFIELD, TX 76063\\ART\\RENDERINGS\\

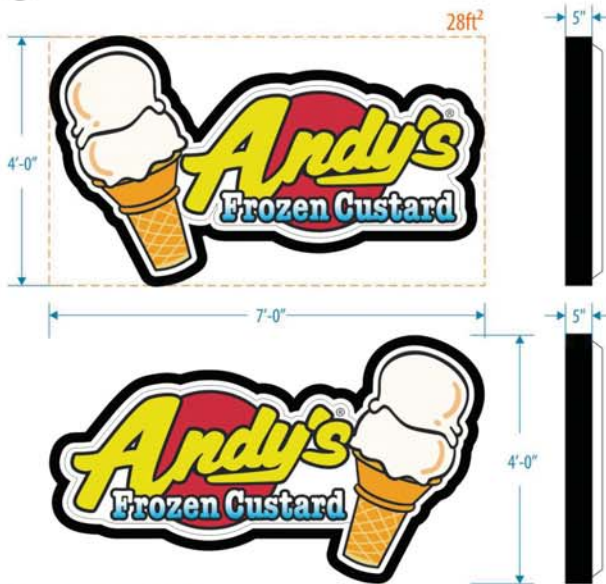
1 Orthographic Views- scale: 3/8"=1'



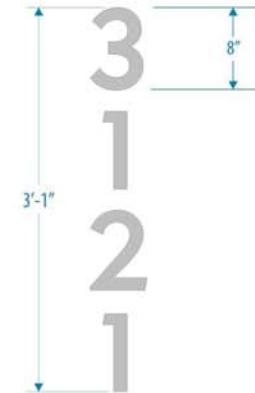
2 Illuminated View- scale: 3/8"=1'



3 Element Details- scale: 1/2"=1'



4 FCO Address- scale: 1"=1'



ANDY'S FROZEN CUSTARD

CUSTOMER

0712-21-MONU-1

DRAWING NUMBER

AS SHOWN

ELEVATION

07.12.21

DATE REVISED

BUDDY HINDS

DESIGNER

TIM SWAIM

PROJECT MANAGER

MANSFIELD, TX

LOCATION

SCOPE OF WORK

2-Sided Monument w/ Half Cone

A LED Illuminated Contoured Aluminum Cabinet with Pan Embossed Backspray Painted Face

- Black
- See Logo Chart for Color Specs

B Flush Mounted 1-Sided LED Illuminated Cabinets

- Flat Face with 3 Line Letter Face, 2 Thumb Screw Latches per Retainer (4 Total) and Vandal Cover

- Black

C Painted 1/4" Aluminum FCO Address; Stud Mounted Flush to Monument Face

- Silver

D Changeable Copy Panel to Slide In and Out

- Digital Print

E Qty. 2-100 pc. 8 on 9 Std Cond. Font Letters; Qty. 1-50 pc. 8 on 9 Std Cond. Font Punctuation Set

F Changeable Copy Letter Storage Cabinet

- Digital Print

EXHIBIT E -ZC#21-012

PAGE 8 OF 16



ANDY'S FROZEN CUSTARD

CUSTOMER

0712-21-DIRE-1 AS SHOWN
DRAWING NUMBER ELEVATION

07.12.21
DATE REVISED

BUDDY HINDS TIM SWAIM
DESIGNER PROJECT MANAGER

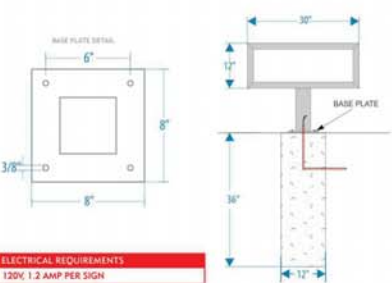
MANSFIELD, TX
LOCATION

SCOPE OF WORK

2-Sided Internally Illuminated Directional

- A Aluminum Extruded Cabinet
 - Paint - MP LV5953 Super Sparkle Silver (Satin)
- B 4" Aluminum Square Post
 - Paint - MP LV5953 Super Sparkle Silver (Satin)
- C 1/4" Aluminum Mounting Bracket
 - Paint - MP LV5953 Super Sparkle Silver (Satin)
- D Clear Acrylic w/ Printed Vinyl Graphics
 - 1st Layer Vinyl - Digital Print on Clear Applied to 1st Surface
 - 2nd Layer Vinyl - Digital Print on Translucent Applied to 1st Surface

ATTACHMENT METHOD

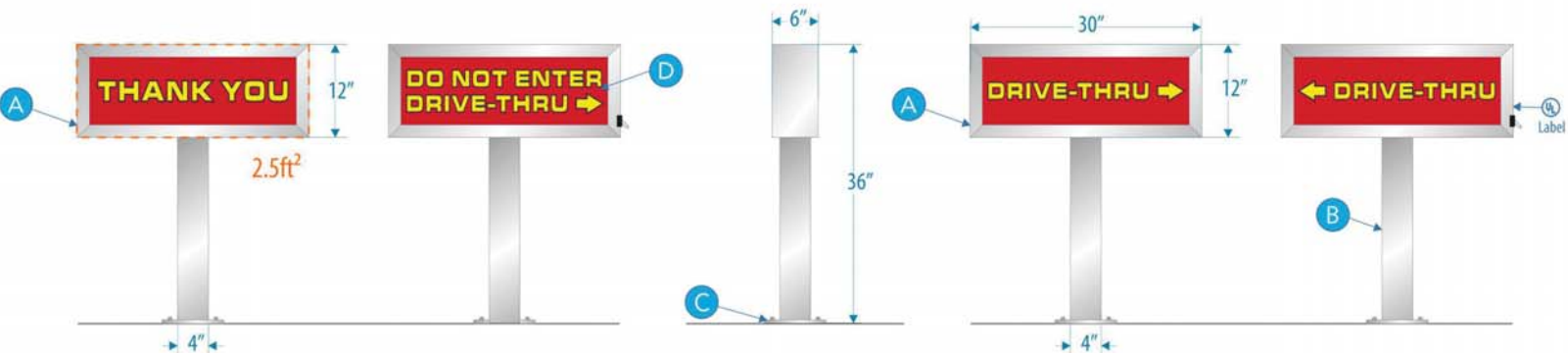


ELECTRICAL REQUIREMENTS
120V, 1.2 AMP PER SIGN

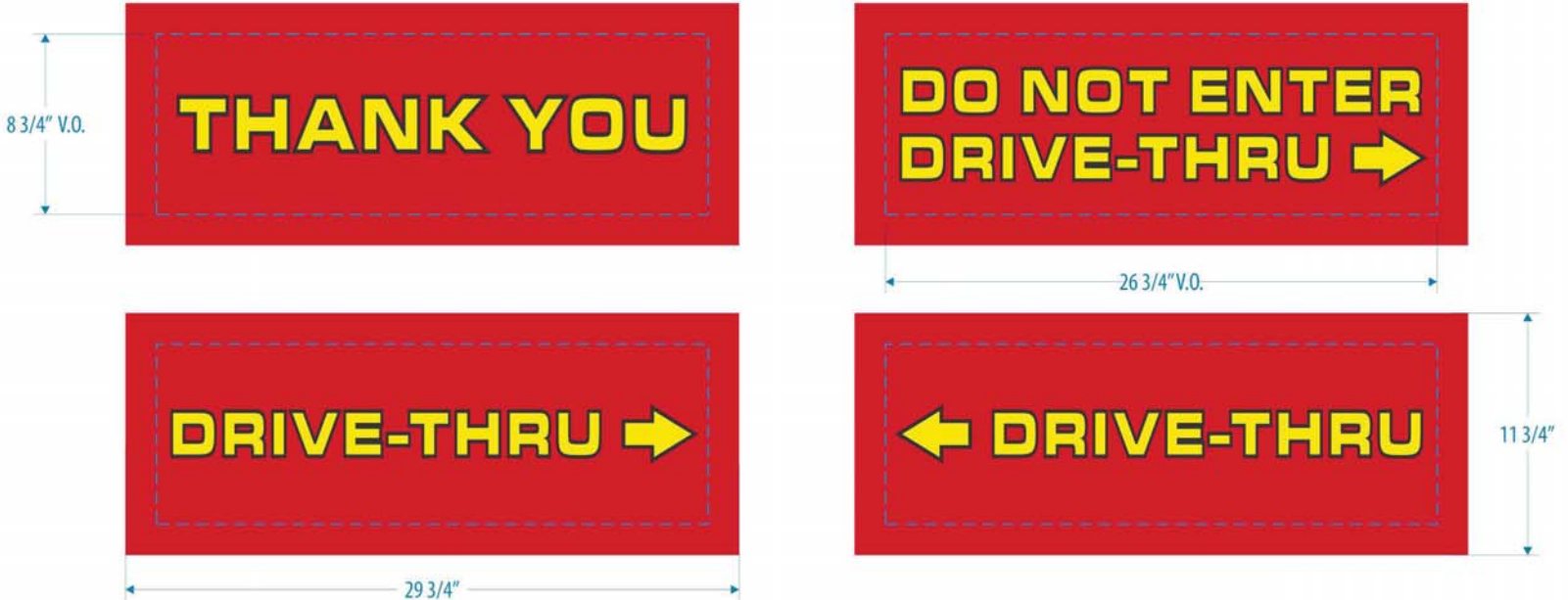
EXHIBIT E -ZC#21-012
PAGE 9 OF 16

ANDY'S FROZEN CUSTARD MASTER/RENDERINGS/

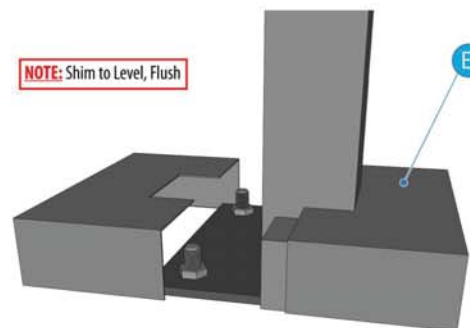
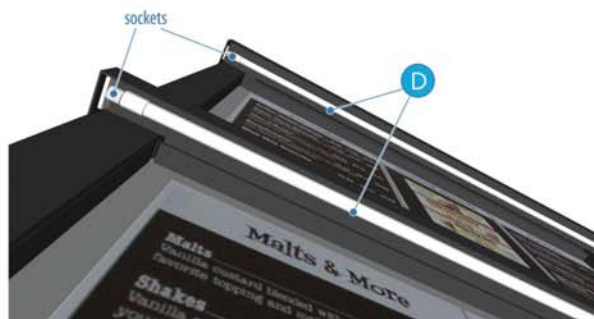
ORTHOGRAPHIC VIEWS SCALE: 3/4" = 1'



ACRYLIC FACES SCALE: 1:6



THIS DRAWING OR ANY COPY IS THE PROPERTY OF PINNACLE SIGN GROUP UNLESS PURCHASED OR WRITTEN CONSENT FROM PSG © 2019 PINNACLE SIGN COMPANY/ UNAUTHORIZED USE OF THIS WORK FOR ANY PURPOSE WILL RESULT IN LEGAL ACTION.



NOTE: Shim to Level, Flush

CUSTOMER

DRAWING NUMBER

ELEVATION

DATE REVISED

DESIGNER

PROJECT MA

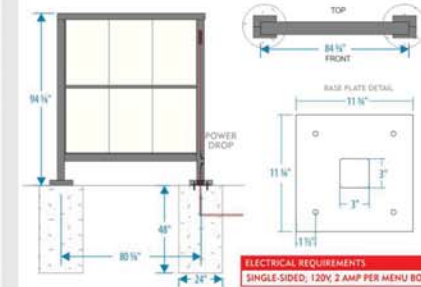
LOCATION

LOCATION

1998, 1999, 2000, 2001, 2002, 2003, 2004, 2005, 2006, 2007, 2008, 2009, 2010, 2011, 2012, 2013, 2014, 2015, 2016, 2017, 2018, 2019, 2020, 2021, 2022, 2023, 2024, 2025, 2026, 2027, 2028, 2029, 2030, 2031, 2032, 2033, 2034, 2035, 2036, 2037, 2038, 2039, 2040, 2041, 2042, 2043, 2044, 2045, 2046, 2047, 2048, 2049, 2050, 2051, 2052, 2053, 2054, 2055, 2056, 2057, 2058, 2059, 2060, 2061, 2062, 2063, 2064, 2065, 2066, 2067, 2068, 2069, 2070, 2071, 2072, 2073, 2074, 2075, 2076, 2077, 2078, 2079, 2080, 2081, 2082, 2083, 2084, 2085, 2086, 2087, 2088, 2089, 2090, 2091, 2092, 2093, 2094, 2095, 2096, 2097, 2098, 2099, 2100, 2101, 2102, 2103, 2104, 2105, 2106, 2107, 2108, 2109, 2110, 2111, 2112, 2113, 2114, 2115, 2116, 2117, 2118, 2119, 2120, 2121, 2122, 2123, 2124, 2125, 2126, 2127, 2128, 2129, 2130, 2131, 2132, 2133, 2134, 2135, 2136, 2137, 2138, 2139, 2140, 2141, 2142, 2143, 2144, 2145, 2146, 2147, 2148, 2149, 2150, 2151, 2152, 2153, 2154, 2155, 2156, 2157, 2158, 2159, 2160, 2161, 2162, 2163, 2164, 2165, 2166, 2167, 2168, 2169, 2170, 2171, 2172, 2173, 2174, 2175, 2176, 2177, 2178, 2179, 2180, 2181, 2182, 2183, 2184, 2185, 2186, 2187, 2188, 2189, 2190, 2191, 2192, 2193, 2194, 2195, 2196, 2197, 2198, 2199, 2200, 2201, 2202, 2203, 2204, 2205, 2206, 2207, 2208, 2209, 2210, 2211, 2212, 2213, 2214, 2215, 2216, 2217, 2218, 2219, 2220, 2221, 2222, 2223, 2224, 2225, 2226, 2227, 2228, 2229, 2230, 2231, 2232, 2233, 2234, 2235, 2236, 2237, 2238, 2239, 2240, 2241, 2242, 2243, 2244, 2245, 2246, 2247, 2248, 2249, 2250, 2251, 2252, 2253, 2254, 2255, 2256, 2257, 2258, 2259, 2260, 2261, 2262, 2263, 2264, 2265, 2266, 2267, 2268, 2269, 2270, 2271, 2272, 2273, 2274, 2275, 2276, 2277, 2278, 2279, 2280, 2281, 2282, 2283, 2284, 2285, 2286, 2287, 2288, 2289, 2290, 2291, 2292, 2293, 2294, 2295, 2296, 2297, 2298, 2299, 2300, 2301, 2302, 2303, 2304, 2305, 2306, 2307, 2308, 2309, 2310, 2311, 2312, 2313, 2314, 2315, 2316, 2317, 2318, 2319, 2320, 2321, 2322, 2323, 2324, 2325, 2326, 2327, 2328, 2329, 2330, 2331, 2332, 2333, 2334, 2335, 2336, 2337, 2338, 2339, 2340, 2341, 2342, 2343, 2344, 2345, 2346, 2347, 2348, 2349, 2350, 2351, 2352, 2353, 2354, 2355, 2356, 2357, 2358, 2359, 2360, 2361, 2362, 2363, 2364, 2365, 2366, 2367, 2368, 2369, 2370, 2371, 2372, 2373, 2374, 2375, 2376, 2377, 2378, 2379, 2380, 2381, 2382, 2383, 2384, 2385, 2386, 2387, 2388, 2389, 2390, 2391, 2392, 2393, 2394, 2395, 2396, 2397, 2398, 2399, 2400, 2401, 2402, 2403, 2404, 2405, 2406, 2407, 2408, 2409, 2410, 2411, 2412, 2413, 2414, 2415, 2416, 2417, 2418, 2419, 2420, 2421, 2422, 2423, 2424, 2425, 2426, 2427, 2428, 2429, 2430, 2431, 2432, 2433, 2434, 2435, 2436, 2437, 2438, 2439, 2440, 2441, 2442, 2443, 2444, 2445, 2446, 2447, 2448, 2449, 2450, 2451, 2452, 2453, 2454, 2455, 2456, 2457, 2458, 2459, 2460, 2461, 2462, 2463, 2464, 2465, 2466, 2467, 2468, 2469, 2470, 2471, 2472, 2473, 2474, 2475, 2476, 2477, 2478, 2479, 2480, 2481, 2482, 2483, 2484, 2485, 2486, 2487, 2488, 2489, 2490, 2491, 2492, 2493, 2494, 2495, 2496, 2497, 2498, 2499, 2500, 2501, 2502, 2503, 2504, 2505, 2506, 2507, 2508, 2509, 2510, 2511, 2512, 2513, 2514, 2515, 2516, 2517, 2518, 2519, 2520, 2521, 2522, 2523, 2524, 2525, 2526, 2527, 2528, 2529, 2530, 2531, 2532, 2533, 2534, 2535, 2536, 2537, 2538, 2539, 2540, 2541, 2542, 2543, 2544, 2545, 2546, 2547, 2548, 2549, 2550, 2551, 2552, 2553, 2554, 2555, 2556, 2557, 2558, 2559, 2560, 2561, 2562, 2563, 2564, 2565, 2566, 2567, 2568, 2569, 2570, 2571, 2572, 2573, 2574, 2575, 2576, 2577, 2578, 2579, 2580, 2581, 2582, 2583, 2584, 2585, 2586, 2587, 2588, 2589, 2590, 2591, 2592, 2593, 2594, 2595, 2596, 2597, 2598, 2599, 2600, 2601, 2602, 2603, 2604, 2605, 2606, 2607, 2608, 2609, 2610, 2611, 2612, 2613, 2614, 2615, 2616, 2617, 2618, 2619, 2620, 2621, 2622, 2623, 2624, 2625, 2626, 2627, 2628, 2629, 2630, 2631, 2632, 2633, 2634, 2635, 2636, 2637, 2638, 2639, 2640, 2641, 2642, 2643, 2644, 2645, 2646, 2647, 2648, 2649, 2650, 2651, 2652, 2653, 2654, 2655, 2656, 2657, 2658, 2659, 2660, 2661, 2662, 2663, 2664, 2665, 2666, 2667, 2668, 2669, 2670, 2671, 2672, 2673, 2674, 2675, 2676, 2677, 2678, 2679, 26

1-Sided Int

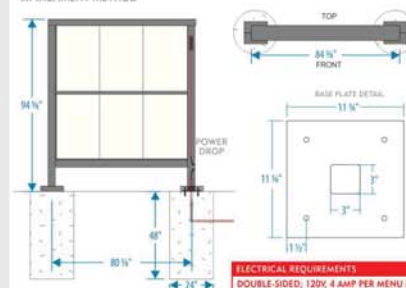
- A Painted 4" Aluminum Tube Frame
 - Paint - Black (Satin)
- B Painted Steel Pan Magnet Backer
 - Paint - Black (Satin)
- C Fabricated Aluminum Light Shield
- D LED Tube Lighting
- E Bolt Covers Painted to Match
- F .080 Aluminum "Drive Thru" Sign
- G Painted .080 Aluminum Bracket
 - Paint - Black (Satin)



ELECTRICAL REQUIREMENTS
SINGLE-SIDED: 120V, 2 AMP PER MENU BOARD

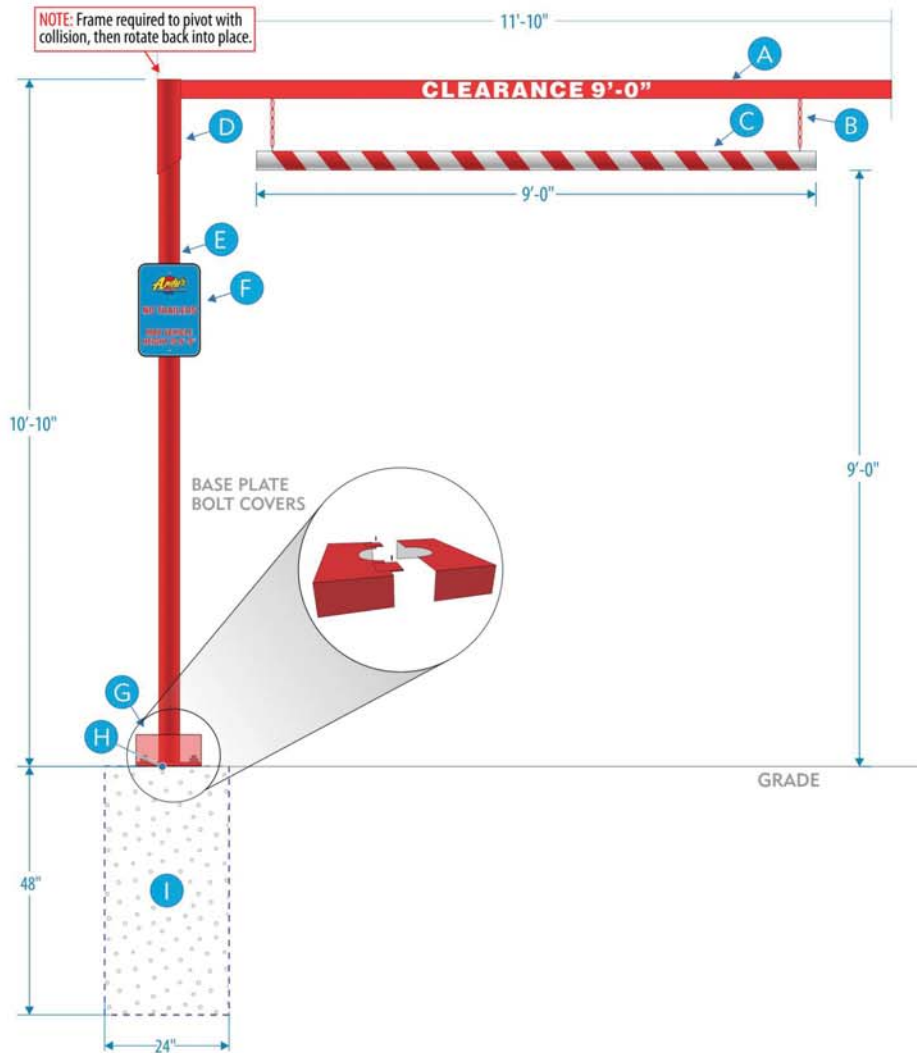


EXHIBIT E -ZC#21-012
PAGE 10 OF 16



ELECTRICAL REQUIREMENTS
DOUBLE-SIDED; 120V, 4 AMP PER MENU BOARD

1 Orthographic Views- scale: 1/2"=1'



2 Post Sign- scale: 1 1/2"=1'



3 Example - scale: NTS



ANDY'S FROZEN CUSTARD

CUSTOMER

AFC-STND-BAR-1

AS SHOWN

DRAWING NUMBER

ELEVATION

11.05.19

DATE REVISED

BUDDY HINDS

TIM SWAIM

DESIGNER

PROJECT MANAGER

ALL

LOCATION

SCOPE OF WORK

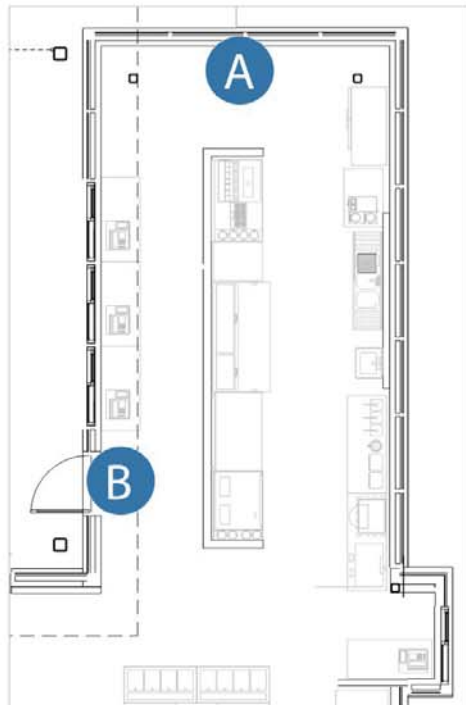
- A Painted 3.5" Square Tube with White Reflective Vinyl Applied to Both Sides
 - Paint - PMS 186 Red
 - Vinyl - 3M 680cz
- B Hanging Metal Chain
 - Paint - PMS 186 Red
- C Painted 4.5" PVC Pipe with White Reflective Vinyl Applied
 - Paint - PMS 186 Red
 - Vinyl - 3M 680cz
- D Painted 4.5" Steel Pipe
 - Paint - PMS 186 Red
- E Painted 4" Steel Pipe
 - Paint - PMS 186 Red
- F Digital Printed .080 Aluminum Sign; Fastened with Adjustable Hose Clamp Brackets
 - Digital Print Graphics
- G Painted Bolt Head Cover
 - Paint - PMS 186 Red
- H 12" Base Plate w/ Wedge Anchors into Concrete
- I 24" x 48" Round Pier Footing

ATTACHMENT METHOD

IWAL-1 PLACEMENT SCALE: 1:60



INTERIOR SITE SCALE: NTS

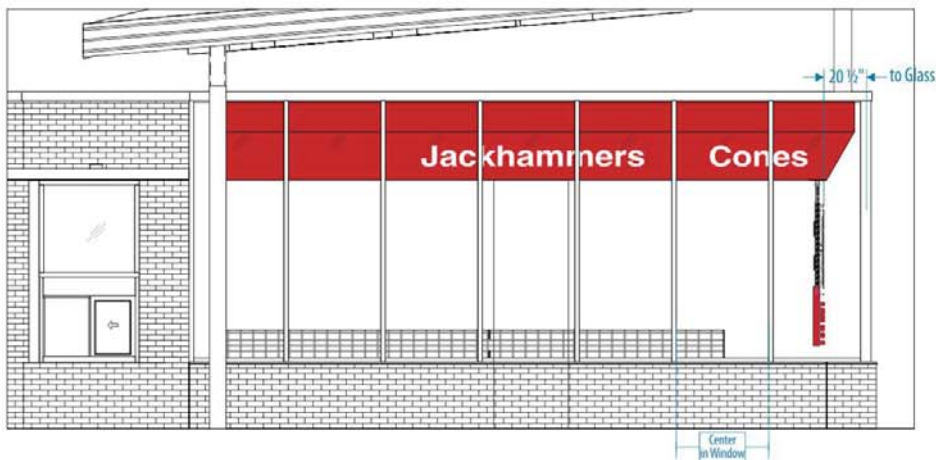


THIS DRAWING OR ANY COPY IS THE PROPERTY OF PINNACLE SIGN GROUP UNLESS PURCHASED OR WRITTEN CONSENT FROM PSG © 2019 PINNACLE SIGN COMPANY/ UNAUTHORIZED USE OF THIS WORK FOR ANY PURPOSE WILL RESULT IN LEGAL ACTION

IWAL-3 PLACEMENT SCALE: 1:60



IWAL-2 PLACEMENT SCALE: 1:60



ANDY'S FROZEN CUSTARD

CUSTOMER

0712-21-INT-1

AS SHOWN

DRAWING NUMBER

ELEVATION

07.12.21

DATE REVISED

BUDDY HINDS

TIM SWAIM

DESIGNER

PROJECT MANAGER

MANSFIELD, TX

LOCATION

SCOPE OF WORK

- A** Hanging Neon "Vegas" Sign
(0712-21-IWAL-1)
- B** Neon Sprecher Window Sign
(AFC-STND-IWAL-3)

Renderings Typical
Pending Architectural Drawings

ATTACHMENT METHOD

1 Orthographic Views - scale: 1:20



2 Placement - scale: NTS



4 Detail Breakout - scale: NTS



ANDY'S FROZEN CUSTARD

CUSTOMER

0712-21-IWAL-1

DRAWING NUMBER

AS SHOWN

ELEVATION

07.12.21

DATE REVISED

BUDDY HINDS

DESIGNER

TIM SWAIM

PROJECT MANAGER

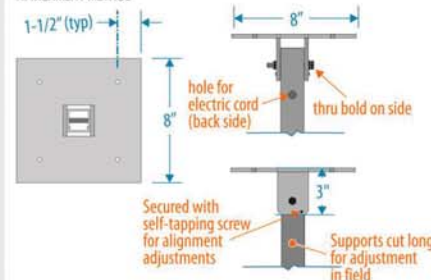
MANSFIELD, TX

LOCATION

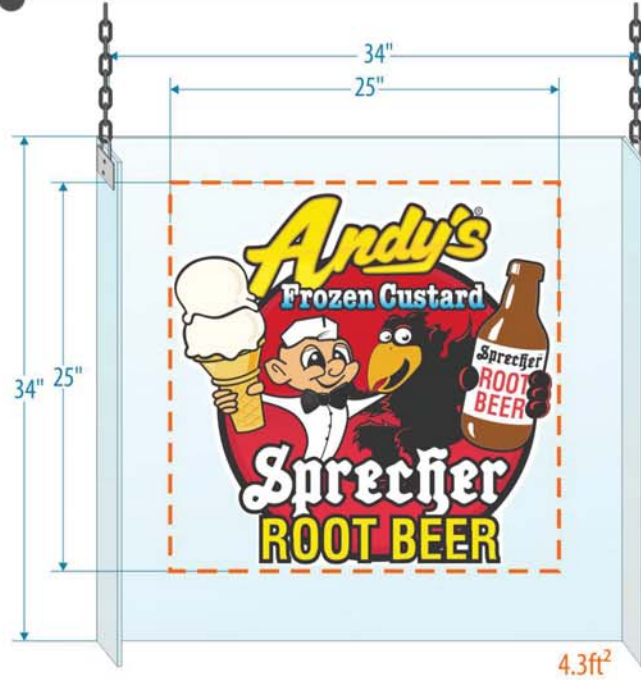
SCOPE OF WORK

- A Hanging Painted Backsplash with Vinyl Graphics
 - See Logo Chart for Color Specs
- B Neon Lighted Letter and Outline
 - Clear Bright Yellow 12mm Neon
 - Clear Red 12mm Neon
 - Snow White 10mm Neon
- C Painted Enclosed Wireway with Bulb Bases, LED Lighted Blinky Bulbs with 3 on 1 Off 4-Point Animated Sequence from Center Out
 - PMS 186 (Gloss)
 - Red LED Bulbs
- D Exposed Back Mounted Transformers with All Back Hardware and GTOs Painted Black
 - Black (Gloss)
- E Static Lighting Option when Regulated
- F 1" Push Thru
 - Cardinal Red 3M Translucent Vinyl on face
 - White Translucent Vinyl on back
 - Red GE Tetra Max LEDs

ATTACHMENT METHOD



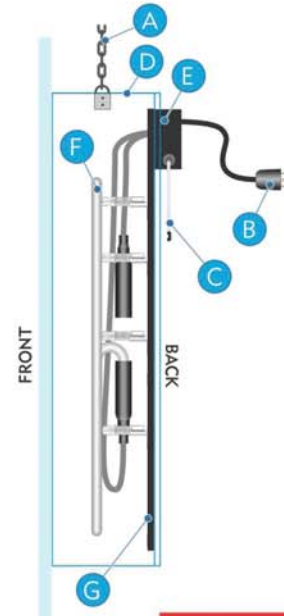
1 Elevation - scale: 1 1/2" = 1'



3 Example - scale: NTS

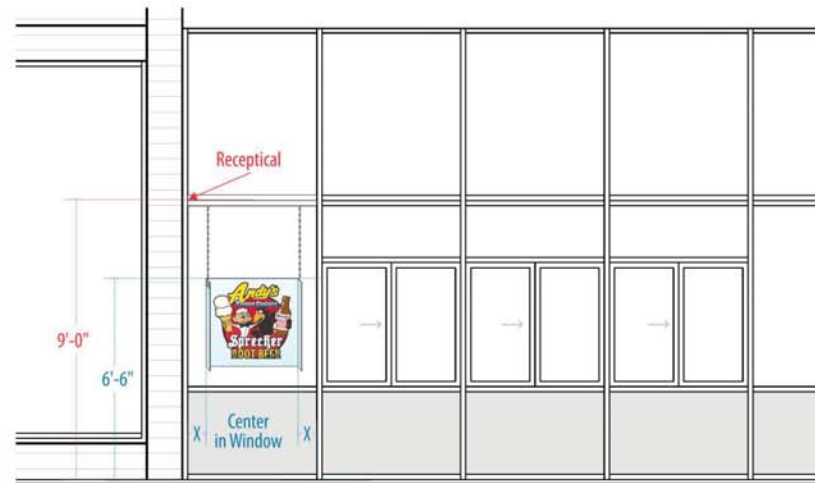


2 Component Detail - scale: NTS



ELECTRICAL REQUIREMENTS
120V, 3 AMPS PER SIGN TO OUTLET 108" AFF

4 Typical Placement - scale: 1/4" = 1'



* Placement is Typical See INT-1 for Site Specific Info

PINNACLE SIGN GROUP

ANDY'S FROZEN CUSTARD

CUSTOMER

AFC-STND-IWAL-3

DRAWING NUMBER

AS SHOWN

ELEVATION

06.25.21

DATE REVISED

BUDDY HINDS

DESIGNER

TIM SWAIM

PROJECT MANAGER

ALL

LOCATION

SCOPE OF WORK

Hanging Neon Window Sign

A Chain D-Clip to Ceiling (Adjust to Measure)

B 6' Cord to 120v Service

C On/Off Switch w/ Chain

D 3/16" Clear Acrylic, Custom Bent to Shape

E Electronic Transformer

F Neon Tube Lighting

● Neon - Clear Bright Yellow 12mm

○ Neon - Snow White 10mm

G Digital Print Vinyl Applied to Face

● Vinyl - Digital Print

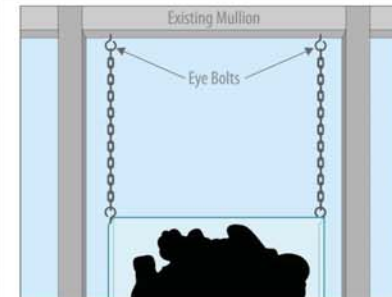
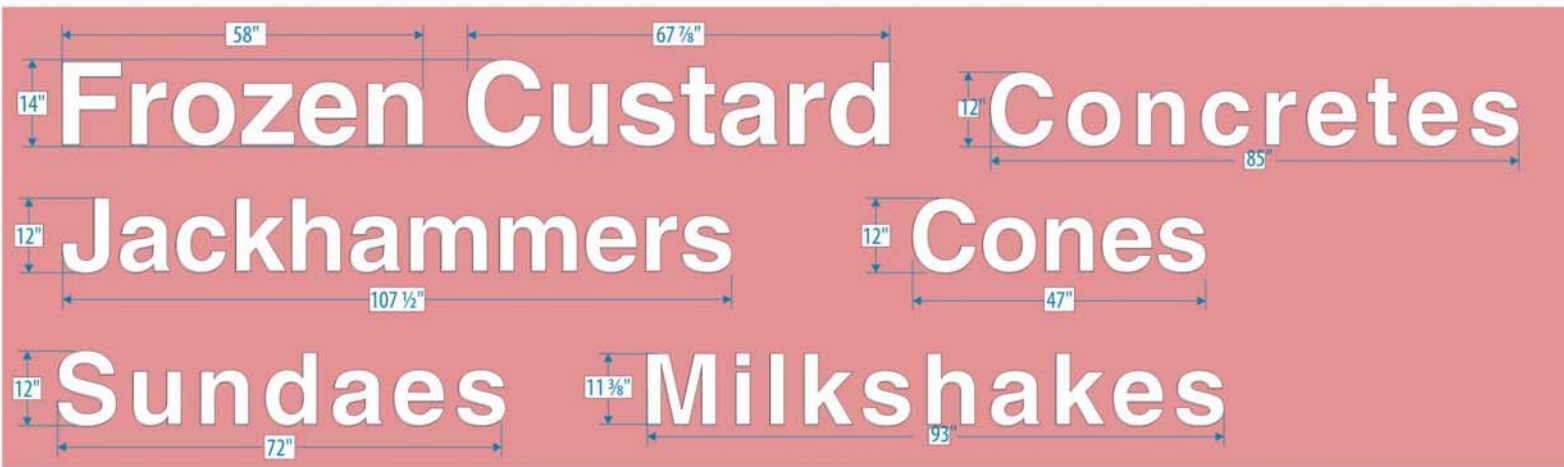
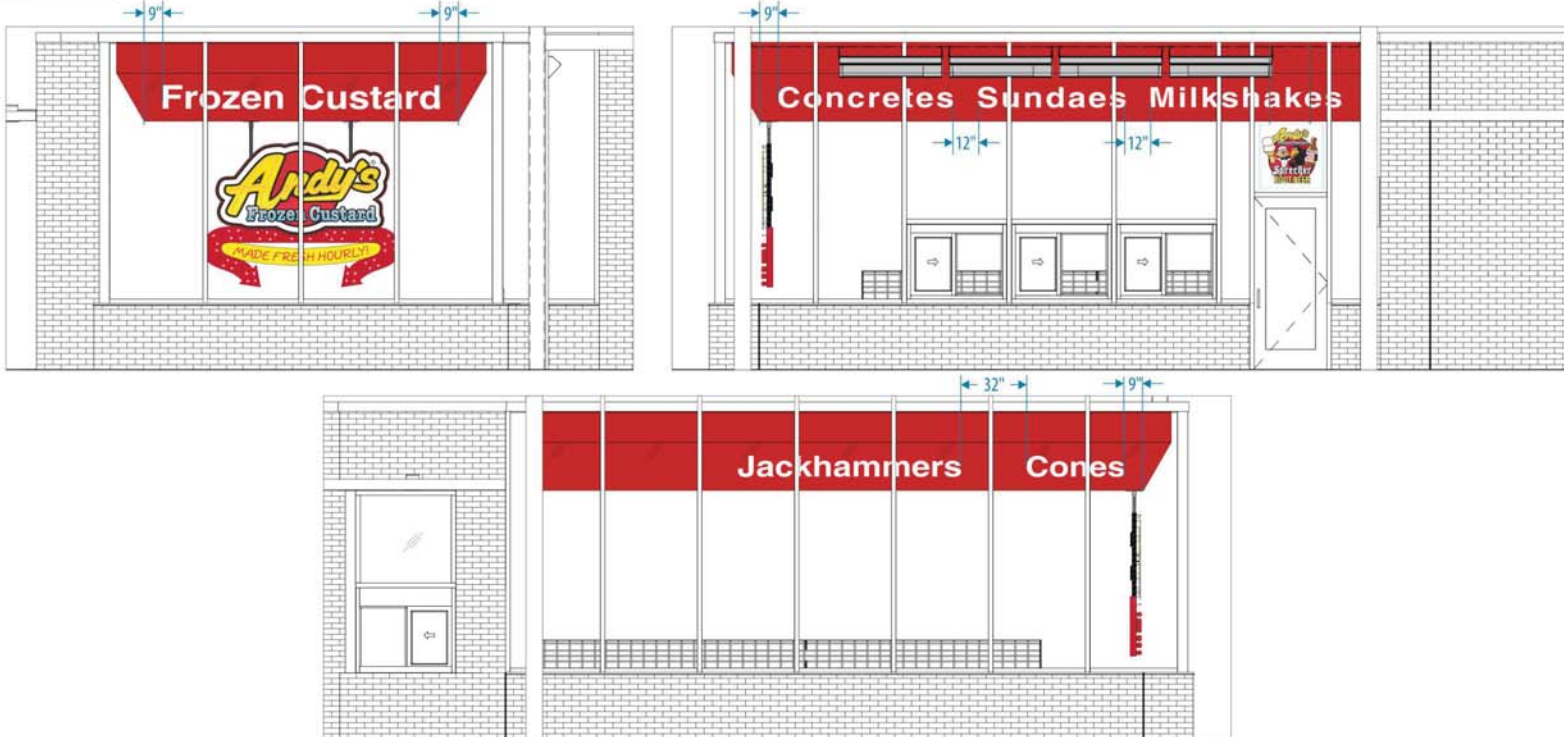


EXHIBIT E -ZC#21-012
PAGE 15 OF 16

ELEVATION VIEW SCALE: 1:16



PROPOSED VIEW SCALE: 1" = 5'



THIS DRAWING OR ANY COPY IS THE PROPERTY OF PINNACLE SIGN GROUP UNLESS PURCHASED OR WRITTEN CONSENT FROM PSG © 2019 PINNACLE SIGN COMPANY/ UNAUTHORIZED USE OF THIS WORK FOR ANY PURPOSE WILL RESULT IN LEGAL ACTION.

PINNACLE SIGN
GROUP

ANDY'S FROZEN CUSTARD

CUSTOMER

0712-21-SPEC-2

DRAWING NUMBER

AS SHOWN

ELEVATION

07.12.21

DATE REVISED

BUDDY HINDS

DESIGNER

TIM SWAIM

PROJECT MANAGER

MANSFIELD, TX

LOCATION

SCOPE OF WORK:

Interior FCOs

- 1/4" PVC Lettering; Flush Mounted to Ceiling Element w/ 2-Sided Tape & Studs
- ☐ PVC - White

EXHIBIT E -ZC#21-012
PAGE 16 OF 16

Renderings Typical
Pending Architectural Drawings

ANDY'S FROZEN CUSTARD LOCATIONS TEXAS 3121 E. BROAD STREET, MANSFIELD, TX 76063 (ART/RENDERINGS)