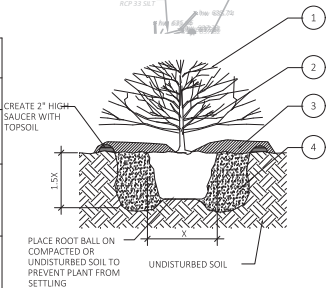


DRAWING LOCATION - P:\32000\32178\04DRAWINGS\DESIGN\WORKING\32178-1P.DWG - SAVED BY - CMCOORE

MANSFIELD, TX LANDSCAPE ORDNANCE		
WEST PROPERTY BY10 10' WIDE BUFFER AND ONE TREE FOR EVERY 50 LF OF BUFFER YARD	261 / 50 = 6 TREES	2 TREES +4 CREDITS
EAST PROPERTY STREET LANDSCAPE SETBACK - SETBACK OF 20' SHALL BE PROVIDED WITH MIN. ONE TREE FOR EVERY 40 LF	319' / 40 = 8 TREES	8 TREES
SOUTH PROPERTY STREET LANDSCAPE SETBACK - SETBACK OF 20' SHALL BE PROVIDED WITH MIN. ONE TREE FOR EVERY 40 LF	190' / 40 = 5 TREES	5 TREES
PARKING LOT LANDSCAPE	PARKING LOTS SHALL BE SCREENED FROM VIEW OF PUBLIC STREETS.	PROVIDED
	A RATIO OF 1 CANOPY TREE FOR EVER 10 PARKING SPACES IS REQUIRED	15 SPACES = 2 TREES REQUIRED / PROVIDED
	ONE TREE SHALL BE LOCATED IN ALL LANDSCAPE END ISLANDS	PROVIDED



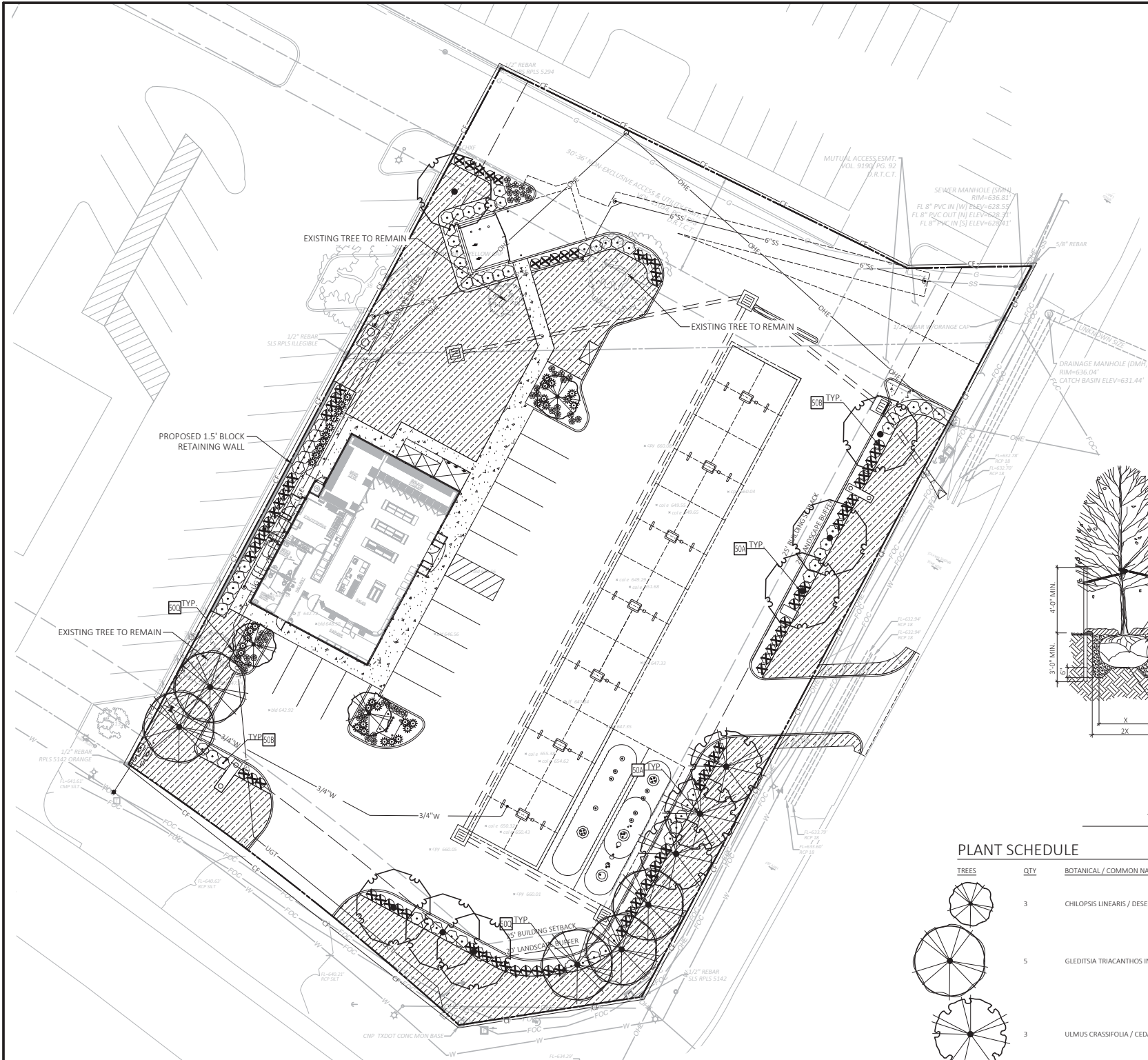
SYMBOL	DESCRIPTION
1	PRUNE BROKEN AND DAMAGED TWIGS AFTER PLANTING. DO NOT PRUNE OR DAMAGE CENTRAL LEADER.
2	PLACE PLANT IN VERTICAL, PLUMB POSITION. REMOVE CONTAINER AND PLANT LABEL PRIOR TO PLACING BACKFILL.
3	3'-4" OF MULCH AS SPECIFIED. DO NOT PLACE MULCH DIRECTLY AGAINST STEMS.
4	PREPARED BACKFILL AND FERTILIZE PER SPECIFICATIONS. TAMP AND SOAK BACKFILL AFTER PLANTING. MAINTAIN AFTER PLANTING PER SPECIFICATIONS.

- PLANTING NOTES**
- A. HOLE DIAMETER SHOULD BE AT LEAST TWICE THE DIAMETER OF THE SHRUB ROOT BALL. SHRUB CROWN SHOULD BE PLACED SLIGHTLY HIGHER (1"-2") ABOVE THE SURROUNDING FINISHED GRADE.
- B. SCORE ROOTBALL BY CUTTING 1/8"-1/4" VERTICAL GROVES 3" APART.
- C. SPACE PLANTS PER PLANTING PLAN.

CONTAINER SHRUB PLANTING DETAIL
N.T.S.

PLANT SCHEDULE

TREES	QTY	BOTANICAL / COMMON NAME	SIZE	DETAIL	INSTALL HT.	CAL.	2021-08-11 15:09 DETAIL
3	3	CHILOPSIS LINEARIS / DESERT WILLOW	8&8	SOA		3.50"	CAL.
5	5	GLEDITSIA TRIACANTHOS INERMIS 'SKYCOLE' TM / SKYLINE HONEY LOCUST	8&8	SOA		3.50"	CAL.
3	3	ULMUS CRASSIFOLIA / CEDAR ELM	8&8	SOA		3.50"	CAL.
7	7	ULMUS PARVIFOLIA 'ALLEE' TM / ALLEE LACEBARK ELM	8&8	SOA		3.50"	CAL.
SHRUBS	QTY	BOTANICAL / COMMON NAME	SIZE	DETAIL	INSTALL HT.		
46	46	ABELIA X 'ROSE CREEK' / ROSE CREEK ABELIA	5 GAL	SOB	30" MIN HT.		
61	61	EUONYMUS ALATUS 'COMPACTUS' / COMPACT BURNING BUSH	5 GAL	SOB	30" MIN HT.		
37	37	MUHLENBERGIA CAPILLARIS 'LENCA' TM / REGAL MIST PINK MUHLY GRASS	5 GAL		24" MIN. HT.		
35	35	NANDINA DOMESTICA / HEAVENLY BAMBOO	5 GAL	SOB	30" MIN HT.		
46	46	NASSELLA TENUISSIMA / TEXAS NEEDLE GRASS	1 GAL	SOB			
GROUND COVERS	QTY	BOTANICAL / COMMON NAME	SIZE				
10,242 S.F.		CYNODON DACTYLON / BERMUDA GRASS	SOD				



SITE BENCHMARK
SITE BENCHMARK
Benchmark #1: A "X" cut in concrete located on the top of a drainage headwall that lies at the corner of U.S. 287 Frontage Rd. and F.M. 157. Elev=637.80' NAVD88
Benchmark #2: A 5/8" rebar with cap stamped "CEI CONTROL POINT" located approximately 34.5' southeast of a fire hydrant, along the U.S. 287 Frontage Rd. Elev=643.23' NAVD88

NOTE:
SEE ARCHITECTURAL PLANS FOR EXACT LOCATIONS AND DIMENSIONS OF PORCHES, RAMPS, VESTIBULE, SLOPED PAVING, TRUCK DOCKS, BUILDING UTILITY ENTRANCE LOCATIONS AND PRECISE BUILDING DIMENSIONS.

MULCH TOP DRESSING: SEE LANDSCAPE NOTES FOR MULCH MATERIAL AND REQUIRED DEPTH.

STEEL STAKE DRIVEN FROM MULDGE SIDE OF EDGING WITH TOP OF STAKE BELOW TOP OF HEADSKIR.

NOTE:
1. SECTION ABOVE IS FOR SOODED AREA WITH MULCH.

STEEL EDGING
N.T.S.

EXISTING LEGEND

---	Boundary Line	→	Guy Wire / Anchor
---	Adjoining Boundary Line	→	Air / Vacuum Machine
---	Easement Line	→	Water Meter
---	Setback Line	→	Water Valve
---	Break Line	→	Fire Hydrant
---	FOC	→	Drainage Manhole (DMH)
---	OHE	→	Grate Inlet (GI)
---	SS	→	Sewer Manhole (SMH)
---	(Site)	→	Sewer Clean Out
---	W	→	Telephone Riser
---	G	→	Fiber Optic Vault
---	Wood Fence Line	→	Warning Fiber Optic Line Sign
---	Benchmark (BM)	→	Single Pole Pylon Sign
---	Found Monument (As Noted)	→	Double Pole Pylon Sign
---	Found Concrete Monument	→	Handicap Parking (ADA)
---	Found Chiseled "X"	→	Bollard / Guard Post
---	Gas Meter	→	Monitoring Well
---	Electric Meter	→	Fuel Storage Cap
---	Electric Riser	→	Traffic Signal Vault
---	Electric Vault	→	Traffic Sign (Type of Sign)
---	Utility Pole	→	Traffic Light (4 Lamps)
---	Light on Utility Pole	→	Flag
---	Ground Light	→	Record Bearing & Distance per Plot Bk. XXXX, Pg. XXXX
---	Light Pole Overhanging	→	

PROPOSED LEGEND

---	BOUNDARY LINE	→	TYPICAL PLANTING WITH QUANTITY AND KEY (SEE PLANT LIST)
---	STORM DRAIN	→	CONSTRUCTION FENCE
---	INTERIOR GREENSPACE	→	

GENERAL NOTES

A. LOCATE ALL UTILITIES AND SITE LIGHTING CONDUITS BEFORE LANDSCAPE CONSTRUCTION BEGINS.

B. NOTIFY LANDSCAPE ARCHITECT OR DESIGNATED REPRESENTATIVE OF ANY LAYOUT DISCREPANCIES PRIOR TO ANY PLANTING.

C. ALL LANDSCAPE MATERIALS SHALL BE IN COMPLIANCE WITH THE AMERICAN STANDARD FOR NURSERY STOCK. (ANSI-Z60-1-1986)

D. ALL DISTURBED AREAS DESIGNATED ON THE GRADING PLAN SHALL BE SHOWN AS FOLLOWS:
GRASS SEED MIX: 25% MAJESTIC BERMUDA 10% COATED CENTPEDE 2.18 PER 1000 S.F. 10-10-10 2-1.8 PER 1000 S.F. MULCH: DRY STRAW OR HAY 2'-3" DEPTH

E. ALL SLOPES AND AREAS DISTURBED BY CONSTRUCTION SHALL BE GRADED SMOOTH AND FOUR INCHES OF TOPSOIL APPLIED. IF ADEQUATE TOPSOIL IS NOT AVAILABLE ON SITE, THE CONTRACTOR SHALL PROVIDE TOPSOIL. APPROVED BY THE OWNER, AS NEEDED. THE AREA SHALL THEN BE SOODED, FERTILIZED, MULCHED, WATERED AND MAINTAINED UNTIL HARDY GRASS GROWTH IS ESTABLISHED IN ALL AREAS. ANY RELOCATED TREES SHALL BE MAINTAINED UNTIL SUCH POINT AS TREE IS RE-ESTABLISHED. ANY AREAS DISTURBED SHALL ANY REASON PRIOR TO THE FINAL ACCEPTANCE OF THE PROJECT SHALL BE CORRECTED BY THE CONTRACTOR AT NO ADDITIONAL COST TO THE OWNER.

F. THE MURPHY STATION WILL NOT DROP MASTER DEVELOPMENT GREEN SPACE BELOW CITY REQUIREMENTS.

G. CONTRACTOR IS TO VERIFY LOCATION OF MASTER DEVELOPMENT IRRIGATION SYSTEM, VALVE BOXES, CONTROL BOXES, BACKFLOW PREVENTION DEVICES AND OTHER ITEMS WHICH ARE PART OF THE SYSTEM. IF DAMAGED THEY MUST BE REPAIRED AT CONTRACTOR'S COST.

H. CONTRACTOR IS TO PROTECT EXISTING LANDSCAPING/IRRIGATION MATERIALS.

I. ACCEPTANCE OF GRADING AND SEEDING SHALL BE BY LANDSCAPE ARCHITECT AND/OR OWNER. THE CONTRACTOR SHALL ASSUME MAINTENANCE RESPONSIBILITIES FOR A MINIMUM OF ONE (1) YEAR OR UNTIL SECOND CUTTING, WHICH EVER IS LONGER. MAINTENANCE SHALL INCLUDE WATERING, WEEDING, RESEEDING AND OTHER OPERATIONS NECESSARY TO KEEP ALL LAWN AREAS IN A THRIVING CONDITIONS. UPON FINAL ACCEPTANCE, OWNER SHALL ASSUME ALL MAINTENANCE RESPONSIBILITIES. AFTER LAWN AREA HAVE GERMINATED, AREAS WHICH FAIL TO SHOW A UNIFORM STAND OF GRASS FOR ANY REASON WHATSOEVER SHALL BE RE-SEED REPEATEDLY UNTIL ALL AREAS ARE COVERED WITH A SATISFACTORY STAND OF GRASS. MINIMUM ACCEPTANCE OF SEEDED LAWN AREAS MAY INCLUDE SCATTERED BARE SPOTS, NONE OF WHICH ARE LARGER THAN 1 SQUARE FOOT, AND WHEN COMBINED DO NOT EXCEED 2% OF TOTAL SEEDED LAWN AREA.

J. ALL PERMANENT TURF AREAS SHALL BE SOD.

K. FERTILIZE ALL PLANTS AT THE TIME OF PLANTING WITH TIME RELEASE FERTILIZER.

L. SEE GRADING PLAN FOR APPLICATION OF TOPSOIL AND MAINTENANCE OF SEEDS AREAS.

M. SHREDDED HARDWOOD MULCH SHALL BE USED AS A FOUR INCH (4") TOP DRESSING IN ALL PLANT BEDS AND AROUND ALL TREES. SINGLE TREES OR SHRUBS SHALL BE MULCHED TO THE OUTSIDE EDGE OF THE SAUCER OR LANDSCAPE ISLAND (SEE PLANTING DETAILS).

N. PLANT MATERIAL SHALL BE WARRANTED FOR A PERIOD OF 1 YEAR AFTER PLANTING. IF ANY PLANTS DIE BEFORE THEY END OF 1 YEAR THEY SHALL BE REPLACED, AT NO COST TO THE OWNER, BY A PLANT OF SIMILAR SIZE AND SPECIES.

O. TREES SHALL BE PLANTED PER DETAIL SOA.

P. GC SHALL INCORPORATE PRE-EMERGENT HERBICIDE AND WEED BARRIER FABRIC IN MULCH AND PLANTING AREAS.

DECIDUOUS TREE PLANTING LEGEND

SYMBOL	DESCRIPTION
1	TREE STRAP LOOP AT FIRST BRANCH. USE RUBBER HOSE OR APPROVED EQUAL TO PREVENT DAMAGE TO TREE.
2	12 GAUGE GALVANIZED WIRE & 1 1/2" PVC PIPE
3	4" ORGANIC MULCH PER SPECIFICATIONS. DO NOT PLACE MULCH AGAINST TREE TRUNK.
4	REMOVE WIRE BASKET AND REMOVE BURLAP & ROPE FROM TOP 1/3 OF ROOT BALL.
5	TREE SAUCER (FORMED BY MIN. 4" THICK MULCH).
6	8" METAL TEE STAKE. KEEP STAKE PLUMB AND SECURE OUTSIDE OF TREE PIT.
7	PREPARED BACKFILL - TAMP TO PREVENT SETTLEMENT. SOAK BACK FILL AFTER PLANTING

PLANTING NOTES

A. RETAIN NATURAL SHAPE. DO NOT SHEAR OR CUT CENTRAL LEADER. TREES WITH CENTRAL LEADERS ARE NOT ACCEPTED IF LEADER IS DAMAGED OR REMOVED.

B. PRUNE ALL DAMAGED TWIGS AFTER PLANTING.

C. WRAP TREES TO FIRST BRANCH IF PLANTED IN FALL. DO NOT WRAP IF PLANTED IN SPRING.

D. TREES TO BE INSTALLED SO TOP OF ROOT BALLS LEVEL WITH ADJACENT GRADE. TREE SHALL BEAR SAME RELATION TO FINISH GRADE AS MAINTAINED AT NURSERY.

E. PLACE TREE BALL ON FIRM UNDISTURBED SOIL.

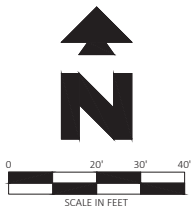
F. IF POSSIBLE MARK TREE TRUNK ON THE NORTHERN SIDE AT THE NURSERY AND PLANT TREE WITH MARK FACING NORTH.

G. TOPSOIL USED SHALL BE AS SPECIFIED IN THE LANDSCAPE SPECIFICATIONS.

TREE PLANTING DETAIL
N.T.S.



Know what's below.
Call before you dig.



CEI ENGINEERING ASSOCIATES, INC.
3108 SW REGENCY PKWY
BENTONVILLE, AR 72712
PHONE: (479) 273-9472
FAX: (479) 273-0844

MURPHY OIL U.S.A. INC.
422 N WASHINGTON AVE.
P.O. BOX 7000
EL DORADO, AR 71730-7000

DEVELOPER:
ESTACADO INTERESTS
DEVAN PHARIS
940-550-8068
DEVAN@ESTACADOINTERESTS.COM
2800 GUILDER DR.
PLANO, TX 75074

LANDSCAPE ARCHITECT:
CHIP ASHLEY
CEI ENGINEERING AND ASSOCIATES
3108 SW REGENCY PKWY
BENTONVILLE, AR 72712
ASHLEY@CEIENG.COM
479-273-9472

MURPHY USA
MURPHY EXPRESS
1901 FM RD. 157
MANSFIELD, TX



8/24/21

BR347

PROFESSIONAL OF RECORD	TAB
PROJECT MANAGER	RAD
DESIGNER	CWM
CEI PROJECT NUMBER	32178
DATE	8/23/2021
REVISION	REV-2

LANDSCAPE PLAN for
SUP

SHEET TITLE:
SHEET NUMBER

SUP#21-005
EXHIBIT D

L1