

BIRDSONG WEST
~DETAILED SITE PLAN~
 CITY OF MANSFIELD
 JOHNSON COUNTY, TEXAS
 August 25, 2021

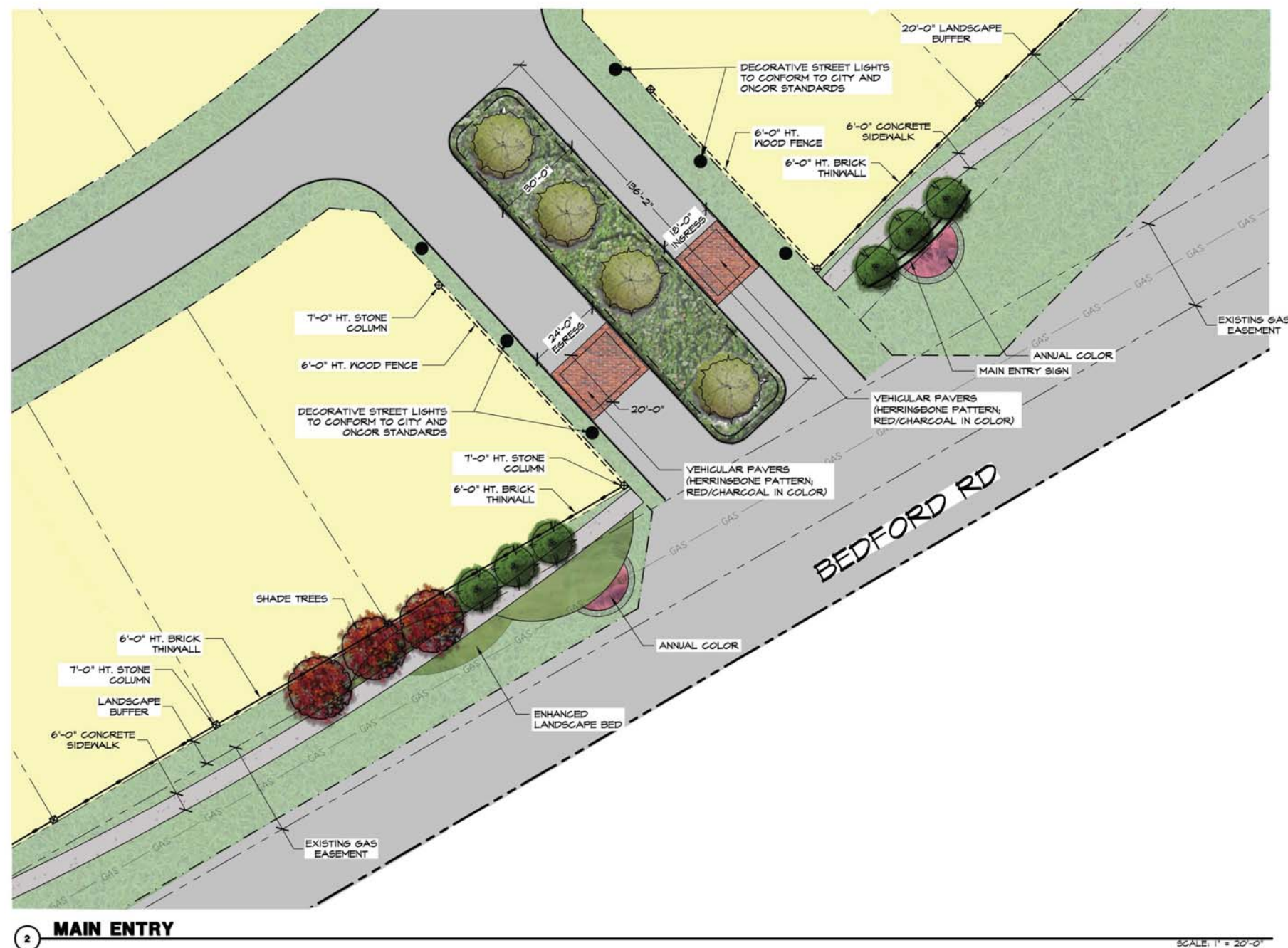
LANDSCAPE ARCHITECT:
 STUDIO 13 DESIGN GROUP, PLLC
 386 W. MAIN STREET
 LEWISVILLE, TX 75057
 PHONE: (469) 635-1900
 CONTACT: LEONARD REEVES
 LREEVES@STUDIO13.BZ

OWNER / DEVELOPER:
 WILLIAM AND BRENDAN SELLS
 1048 NEWT PATTERSON RD
 MANSFIELD, TX 76063

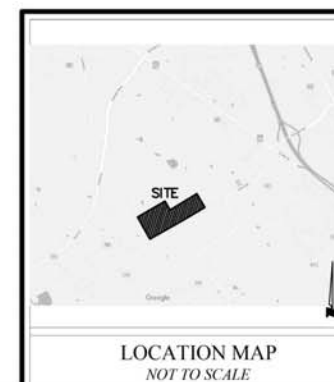
ZONING CASE
#21-010

STUDIO 13 DESIGN GROUP
 Studio 13 Design Group, PLLC
 386 W. Main Street
 Lewisville, Texas 75057
 469-635-1900
 TBAE Firm #BR643

EXHIBIT **E1**



NOTE:
ALL IMPROVEMENTS SHOWN ON
THIS PLAN ARE CONCEPTUAL IN
NATURE & SUBJECT TO CHANGE.



BIRDSONG WEST ~DETAILED SITE PLAN~

CITY OF MANSFIELD
JOHNSON COUNTY, TEXAS
August 25, 2021

LANDSCAPE ARCHITECT:
STUDIO 13 DESIGN GROUP, PLLC
386 W. MAIN STREET
LEWISVILLE, TX 75057
PHONE: (469) 635-1900
CONTACT: LEONARD REEVES
LREEVES@STUDIO13.BZ

OWNER / DEVELOPER:
WILLIAM AND BRENDAN SELLS
1048 NEWT PATTERSON RD
MANSFIELD, TX 76063

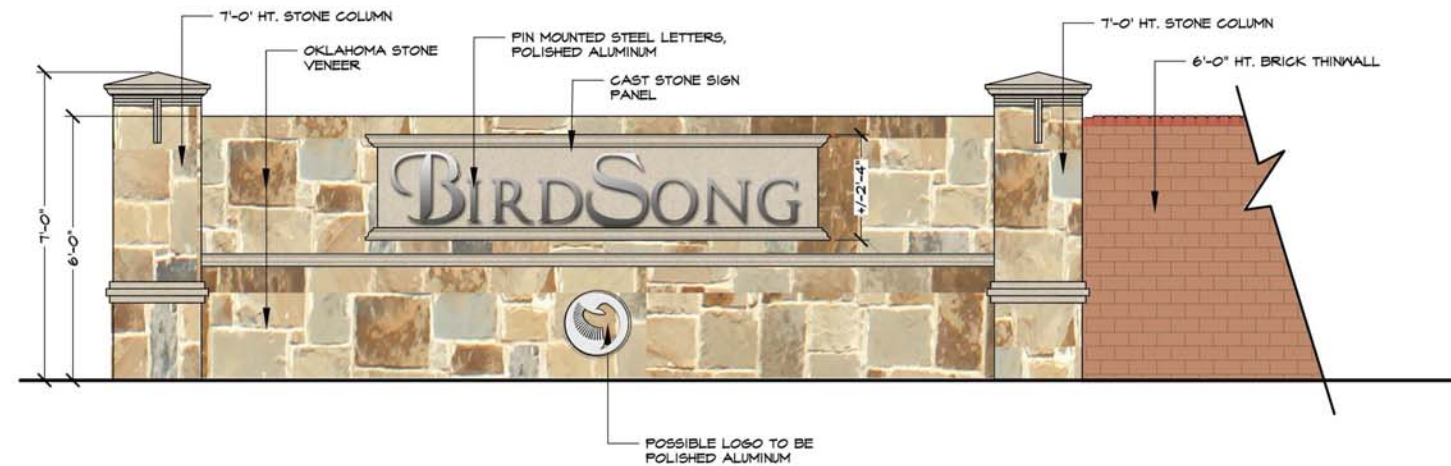
ZONING CASE
#21-010

STUDIO 13
DESIGN GROUP

Studio 13 Design Group, PLLC
386 W. Main Street
Lewisville, Texas 75057
469-635-1900
TBAE Firm #BR643

EXHIBIT

E2



1 SECONDARY SIGN

SCALE: 1/2" = 1'-0"



2 SECONDARY ENTRY

SCALE: 1" = 10'-0"

NOTE:
ALL IMPROVEMENTS SHOWN ON
THIS PLAN ARE CONCEPTUAL IN
NATURE & SUBJECT TO CHANGE.



LOCATION MAP
NOT TO SCALE

BIRDSONG WEST ~DETAILED SITE PLAN~

CITY OF MANSFIELD
JOHNSON COUNTY, TEXAS
August 25, 2021

LANDSCAPE ARCHITECT:
STUDIO 13 DESIGN GROUP, PLLC
386 W. MAIN STREET
LEWISVILLE, TX 75057
PHONE: (469) 635-1900
CONTACT: LEONARD REEVES
LREEVES@STUDIO13.BZ

OWNER / DEVELOPER:
WILLIAM AND BRENDAN SELLS
1048 NEWT PATTERSON RD
MANSFIELD, TX 76063

ZONING CASE
#21-010

STUDIO 13
DESIGN GROUP

Studio 13 Design Group, PLLC,
386 W. Main Street
Lewisville, Texas 75057
469-635-1900
TBAE Firm #BR643

EXHIBIT

E3