

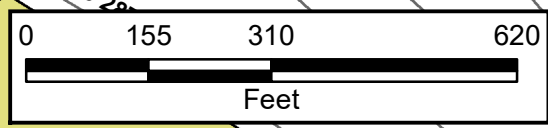
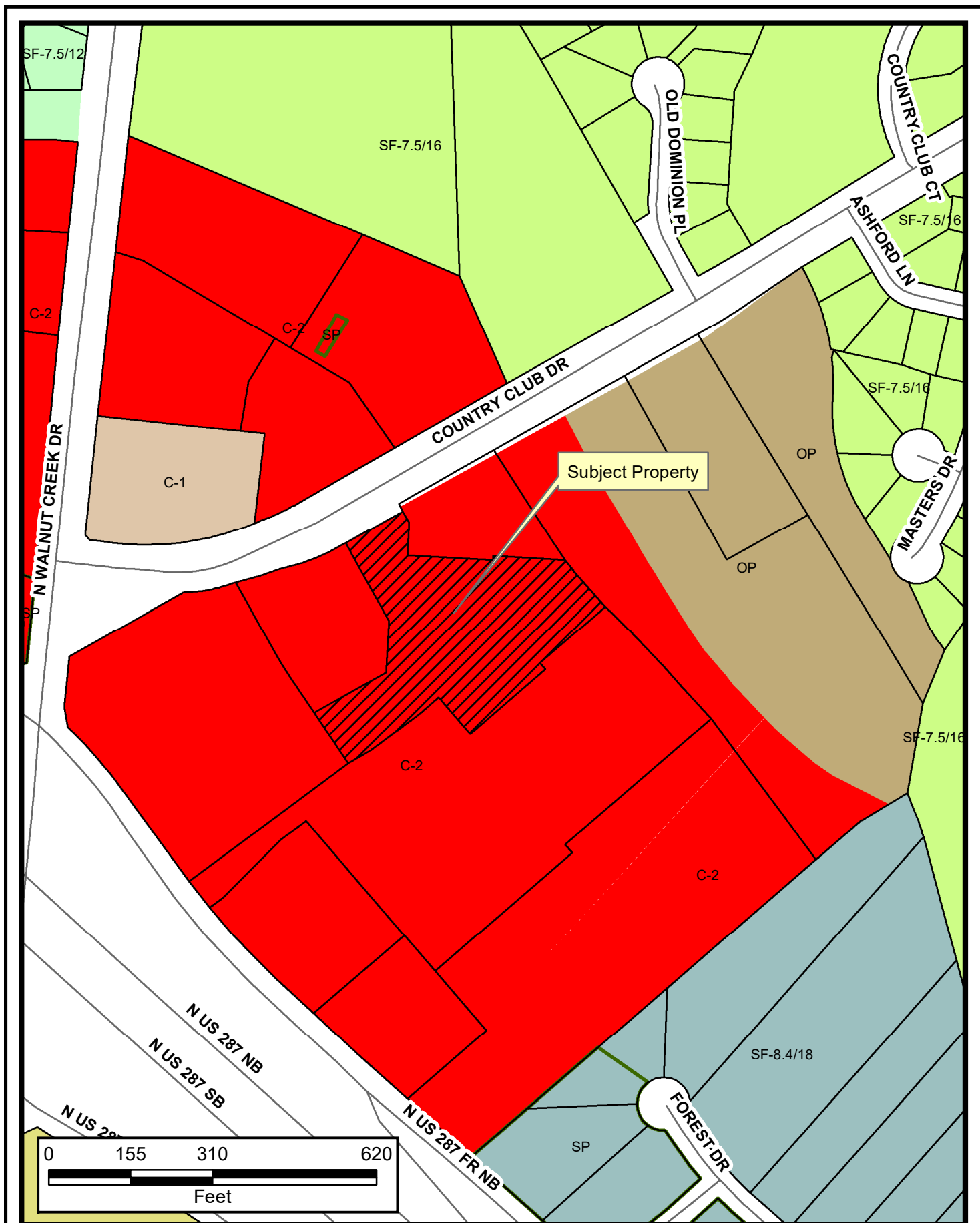


**SUP#21-006**

This information is for illustrative purposes only. Not for design or development purposes. Site-specific studies may be required to obtain accurate feature locations. Every effort is made to ensure the information displayed here is accurate; however, the City of Mansfield makes no claims to its accuracy or completeness.

8/24/2021





**SUP#21-006**

This information is for illustrative purposes only. Not for design or development purposes. Site-specific studies may be required to obtain accurate feature locations. Every effort is made to ensure the information displayed here is accurate; however, the City of Mansfield makes no claims to its accuracy or completeness.

8/24/2021

## Property Owner Notification for SUP#21-006

LEGAL DESC 1	LEGAL DESC 2	OWNER NAME	OWNER ADDRESS	CITY	ZIP
MANSFIELD COMMONS ADDITION	LOT 1	CHAVEZ BROTHERS INC	12817 WHISPER WILLOWS DR	HASLET, TX	76052
MANSFIELD COMMONS ADDITION	LOT 4	THE COMMONS AT WALNUT CREEK 18	12411 VENTURA BLVD	STUDIO CITY, CA	91604
MANSFIELD COMMONS ADDITION	LOT 5	THE COMMONS AT WALNUT CREEK 18	12411 VENTURA BLVD	STUDIO CITY, CA	91604
MANSFIELD COMMONS ADDITION	LOT 6	JK COUNTRY CLUB LLC	1114 SEMINARY DR	FORT WORTH, TX	76115
MANSFIELD COMMONS ADDITION	LOT 7	THE COMMONS AT WALNUT CREEK 18	12411 VENTURA BLVD	STUDIO CITY, CA	91604
MANSFIELD COMMONS ADDITION	LOT 8	MANSFIELD, CITY OF	1200 E BROAD ST	MANSFIELD, TX	76063-1805
MANSFIELD NATIONAL SUBDIVISION	BLK 1	OVERTON BANK & TRUST NA	111 W HOUSTON ST FL 11	SAN ANTONIO, TX	78205
WALNUT CREEK CORNER ADDN	BLK 1	CCSC PARTNERS LLC	835 E LAMAR STE 215	ARLINGTON, TX	76011
WALNUT CREEK CORNER ADDN	BLK 1	ISLAND HARBOR HOUSE INC	5 MOTLEY AVE	STATEN ISLAND, NY	10314
WALNUT CREEK CORNER ADDN	BLK 1	EDLOFT LLC	260 S LOS ROBLES AVE STE 212	PASADENA, CA	91101-3625