

BUILDING 1- OVERALL ELEVATIONS- EXHIBIT C

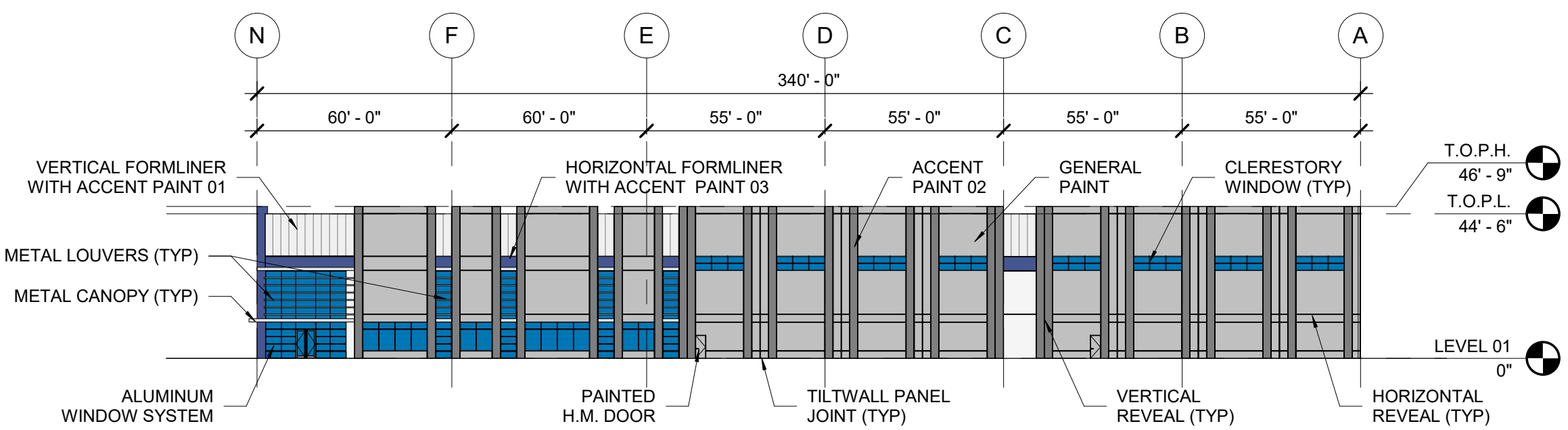
ELEVATIONS

SCALE: 1" = 40'-0"



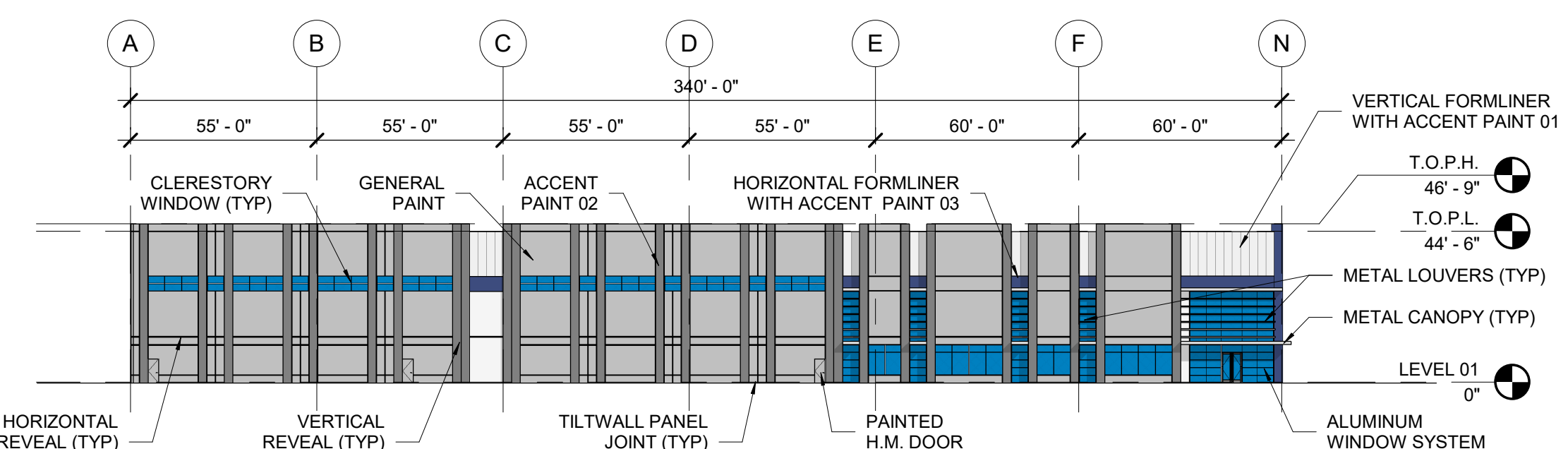
MATERIALS LEGEND

- ALUMINUM / PREFINISHED METAL
- SOLID - GRAY (LIGHT) - GENERAL PAINT
- SOLID - WHITE - ACCENT 1
- SOLID - GRAY (DARK) - ACCENT PAINT 02
- SOLID - BLUE - ACCENT PAINT 03
- FORMLINER - HORIZONTAL
- FORMLINER - VERTICAL
- GLAZING - VISION
- GLAZING - SPANDREL



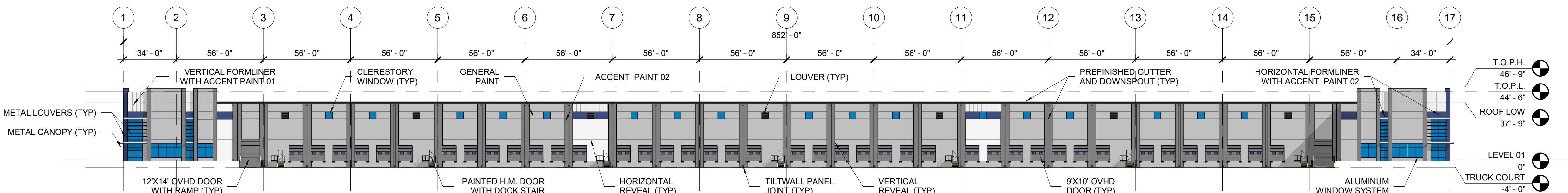
NORTH ELEVATION

SCALE: 1" = 40'-0"



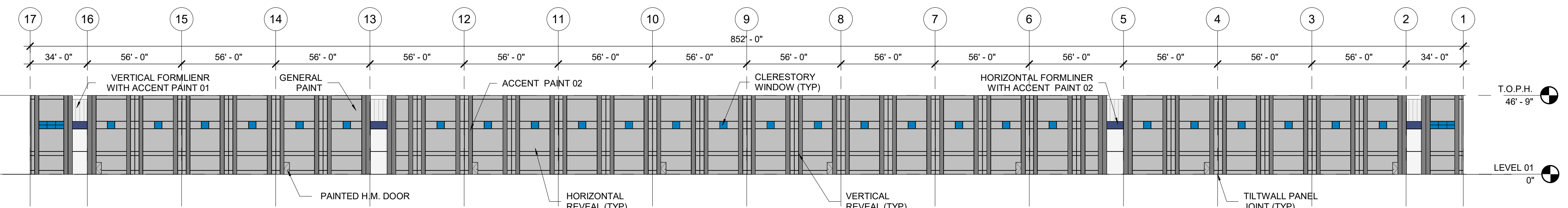
SOUTH ELEVATION

SCALE: 1" = 40'-0"



EAST ELEVATION

SCALE: 1" = 40'-0"



WEST ELEVATION

SCALE: 1" = 40'-0"

MANSFIELD BUSINESS PARK- EXHIBIT C ZC#21-009

146.50 ACRES OF LAND LOCATED IN THE
V.M. STYLES SURVEY ABSTRACT NO. 791,
J.Q. WHEELER SURVEY, ABSTRACT NO. 903 &
S.M. KEMP SURVEY, ABSTRACT NO. 492
MANSFIELD, JOHNSON COUNTY, TEXAS
PREPARED MARCH 26, 2021 & JULY 24, 2006

MANSFIELD BUSINESS PARK
A PROJECT FOR
STONELAKE CAPITAL PARTNERS

HOUSTON

09/14/21

TEXAS

JT

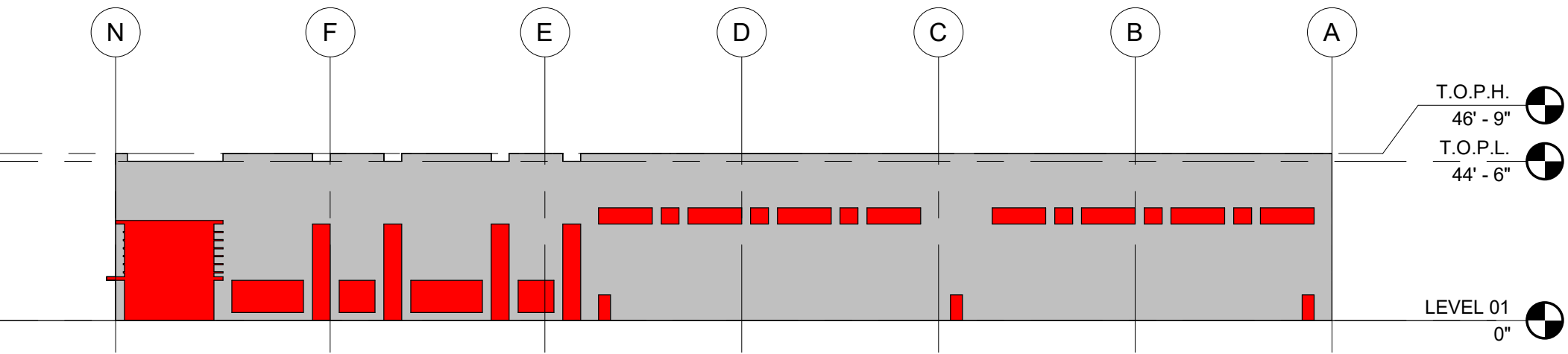
211057

powers
brown
archit
ecture

BUILDING 1- MATERIALS DIAGRAMS- EXHIBIT C

MATERIALS DIAGRAM

SCALE: 1" = 40'-0"

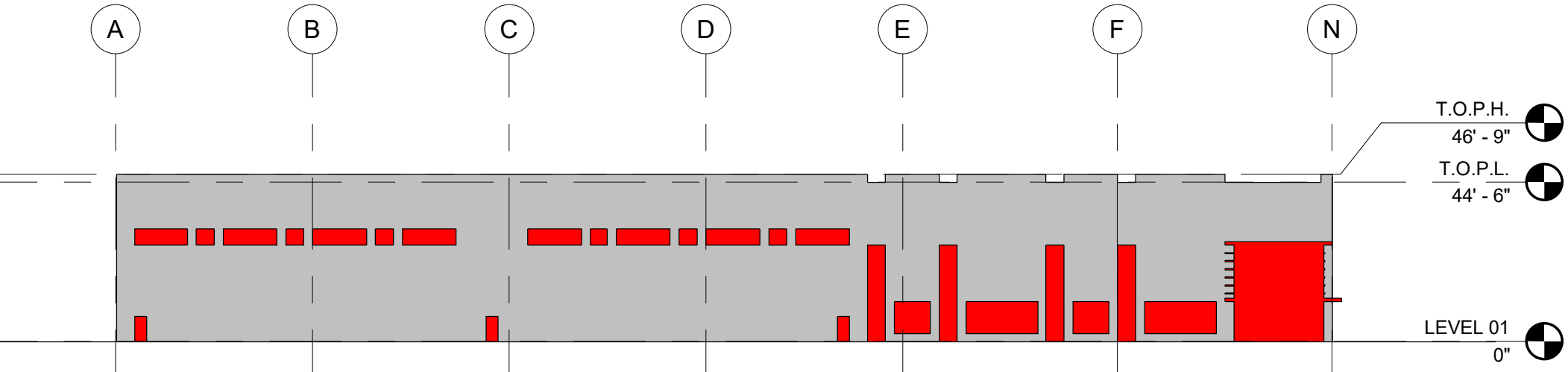


NORTH FACADE:
TOTAL SURFACE AREA: 15,792 SF
TILT WALL (MASONRY-LIKE-MATERIAL): 13,247 SF (83.9%)
OTHER MATERIALS: 2,545 SF (16.1%)

MASONRY-LIKE CONSTRUCTION MATERIALS –
MASONRY-LIKE CONSTRUCTION MATERIALS INCLUDE FIBER REINFORCED CEMENT EXTERIOR SIDING, STUCCO, EXTERIOR INSULATED FINISH SYSTEMS (E.I.F.S.), OR SIMILAR EXTERIOR CLADDING; AND CONCRETE TILT WALL, POUR-IN-PLACE CONCRETE WALL AND PRE-CAST WALL THAT ARE AT LEAST TWO (2) INCHES THICK AND THAT ARE PROFILED, SCULPTURED, FLUTED, EXPOSED-AGGREGATED OR HAVE OTHER NON-SMOOTH ARCHITECTURAL CONCRETE FINISH. ORD. NO. 1484, 5/10/04)

NORTH ELEVATION- MATERIALS

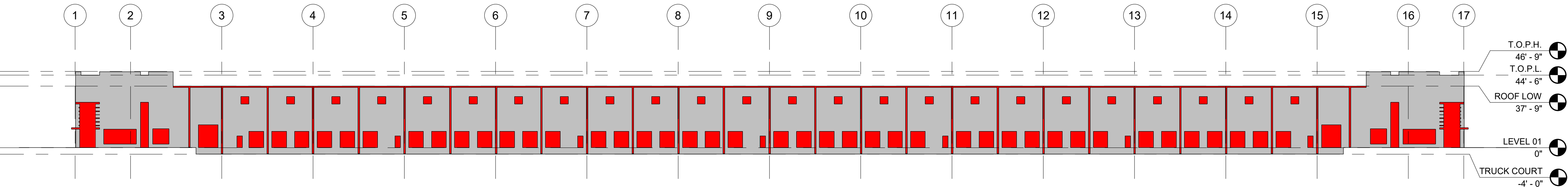
SCALE: 1" = 40'-0"



SOUTH FACADE:
TOTAL SURFACE AREA: 15,792 SF
TILT WALL (MASONRY-LIKE-MATERIAL): 13,247 SF (83.9%)
OTHER MATERIALS: 2,545 SF (16.1%)

SOUTH ELEVATION- MATERIALS

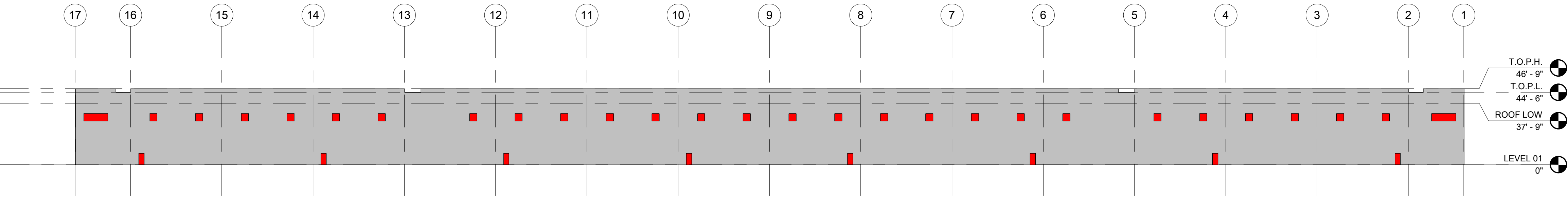
SCALE: 1" = 40'-0"



EAST FACADE:
TOTAL SURFACE AREA: 35,988 SF
TILT WALL (MASONRY-LIKE-MATERIAL): 28,197 SF (78.4%)
OTHER MATERIALS: 7,791 SF (21.6%)

EAST ELEVATION- MATERIALS

SCALE: 1" = 40'-0"



WEST FACADE:
TOTAL SURFACE AREA: 39,746 SF
TILT WALL (MASONRY-LIKE-MATERIAL): 38,894 SF (97.9%)
OTHER MATERIALS: 852 SF (2.1%)

WEST ELEVATION- MATERIALS

SCALE: 1" = 40'-0"

**MANSFIELD BUSINESS PARK- EXHIBIT C
ZC#21-009**

146.50 ACRES OF LAND LOCATED IN THE
V.M. STYLES SURVEY ABSTRACT NO. 791,
J.Q. WHEELER SURVEY, ABSTRACT NO. 903 &
S.M. KEMP SURVEY, ABSTRACT NO. 492
MANSFIELD, JOHNSON COUNTY, TEXAS
PREPARED MARCH 26, 2021 & JULY 24, 2006

BUILDINGS 2 & 3- OVERALL ELEVATIONS- EXHIBIT C

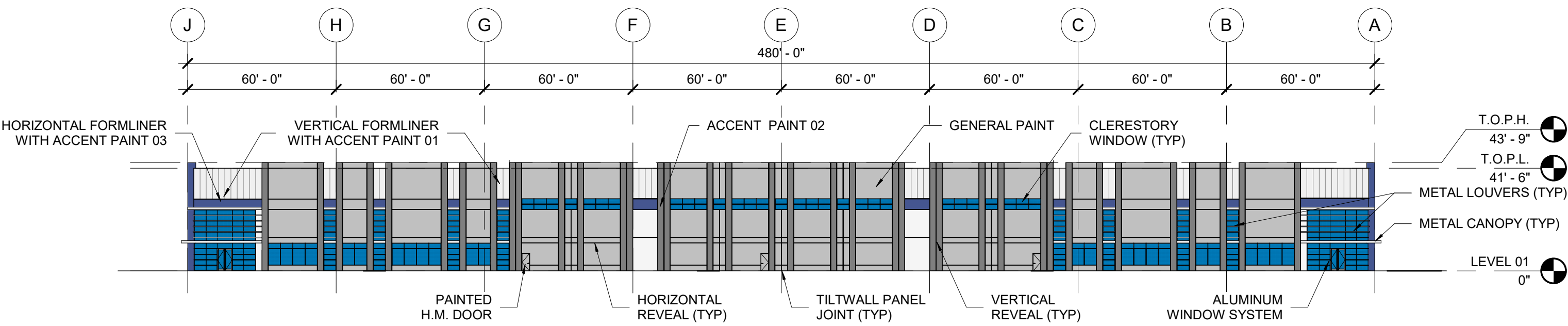
ELEVATIONS

SCALE: 1" = 40'-0"



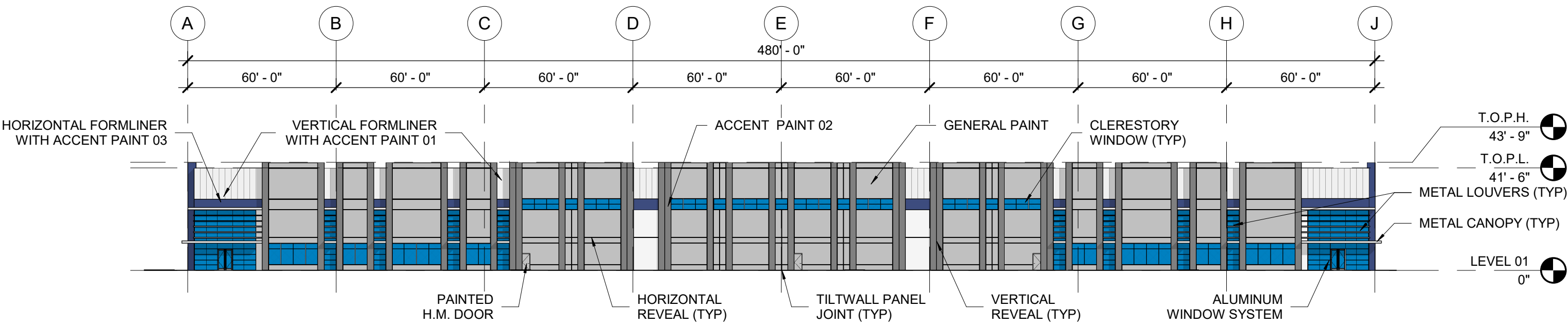
MATERIALS LEGEND

	ALUMINUM / PREFINISHED METAL
	SOLID - GRAY (LIGHT) - GENERAL PAINT
	SOLID - WHITE - ACCENT 1
	SOLID - GRAY (DARK) - ACCENT PAINT 02
	SOLID - BLUE - ACCENT PAINT 03
	FORMLINER - HORIZONTAL
	FORMLINER - VERTICAL
	GLAZING - VISION
	GLAZING - SPANDREL



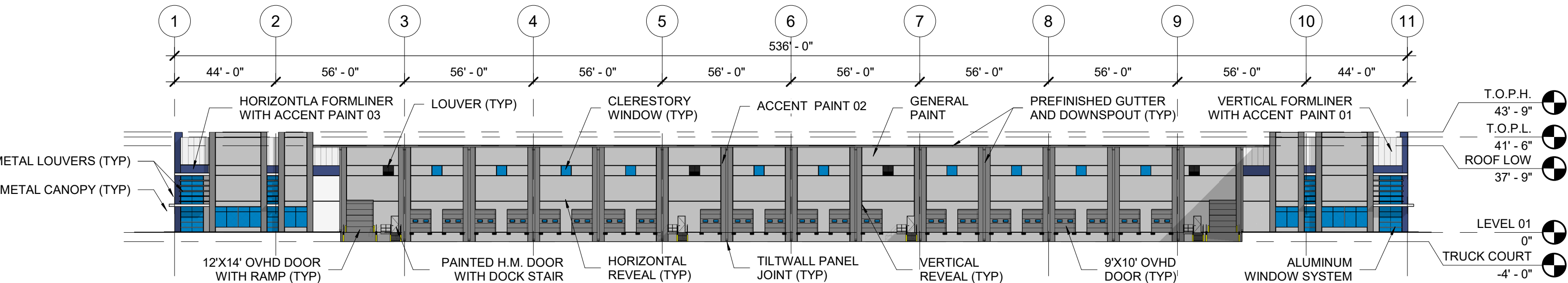
NORTH ELEVATION

SCALE: 1" = 40'-0"



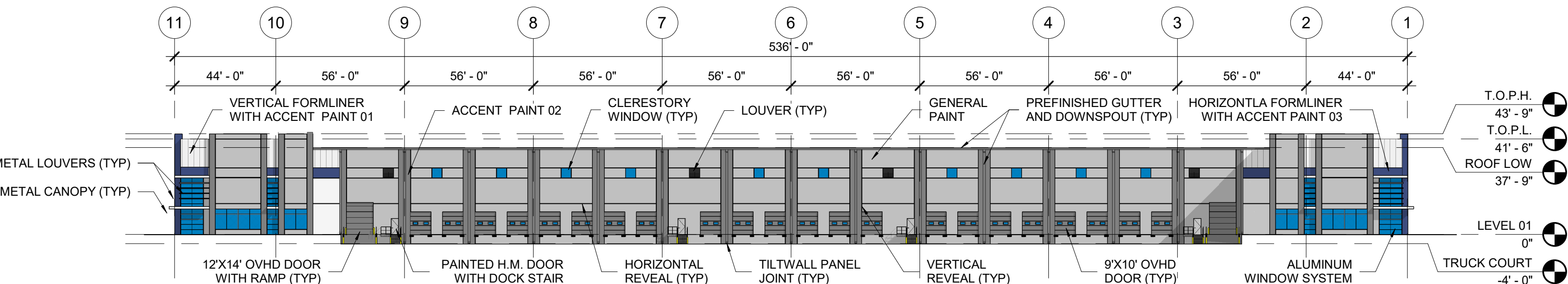
SOUTH ELEVATION

SCALE: 1" = 40'-0"



EAST ELEVATION

SCALE: 1" = 40'-0"



WEST ELEVATION

SCALE: 1" = 40'-0"

MANSFIELD BUSINESS PARK- EXHIBIT C
ZC#21-009

146.50 ACRES OF LAND LOCATED IN THE
V.M. STYLES SURVEY ABSTRACT NO. 791,
J.Q. WHEELER SURVEY, ABSTRACT NO. 903 &
S.M. KEMP SURVEY, ABSTRACT NO. 492
MANSFIELD, JOHNSON COUNTY, TEXAS
PREPARED MARCH 26, 2021 & JULY 24, 2006

MANSFIELD BUSINESS PARK
A PROJECT FOR
STONELAKE CAPITAL PARTNERS

HOUSTON

09/14/21

TEXAS

JT

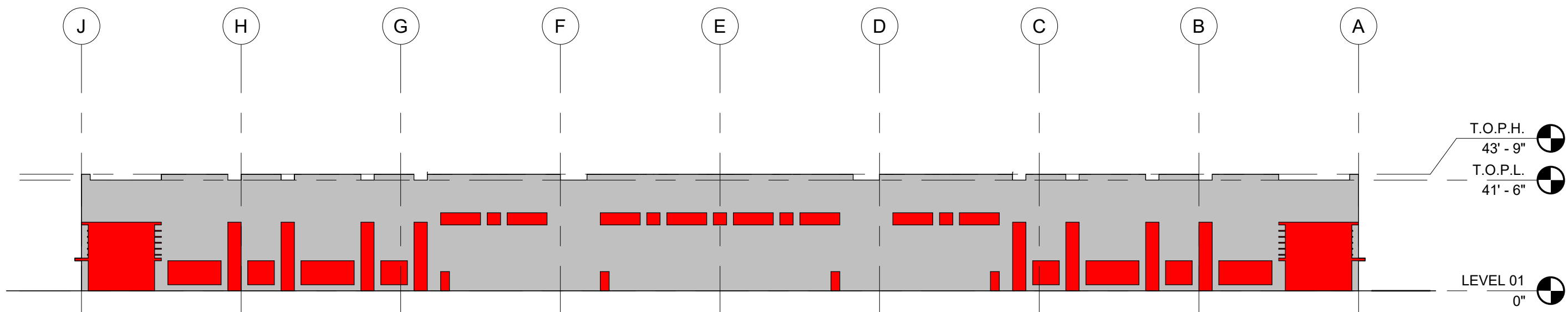
211057

powers
brown
archi
ecture

BUILDINGS 2 & 3- MATERIALS DIAGRAMS- EXHIBIT C

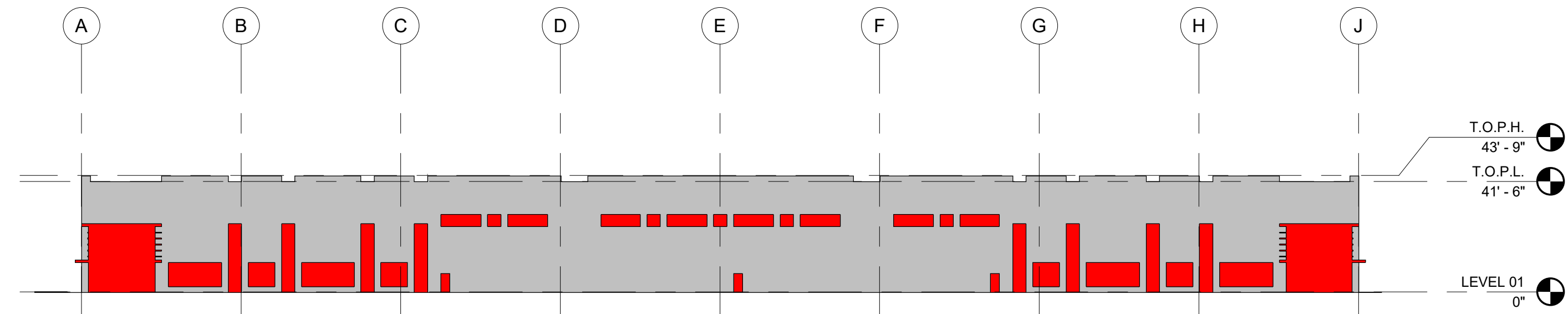
MATERIALS DIAGRAM

SCALE: 1" = 40'-0"



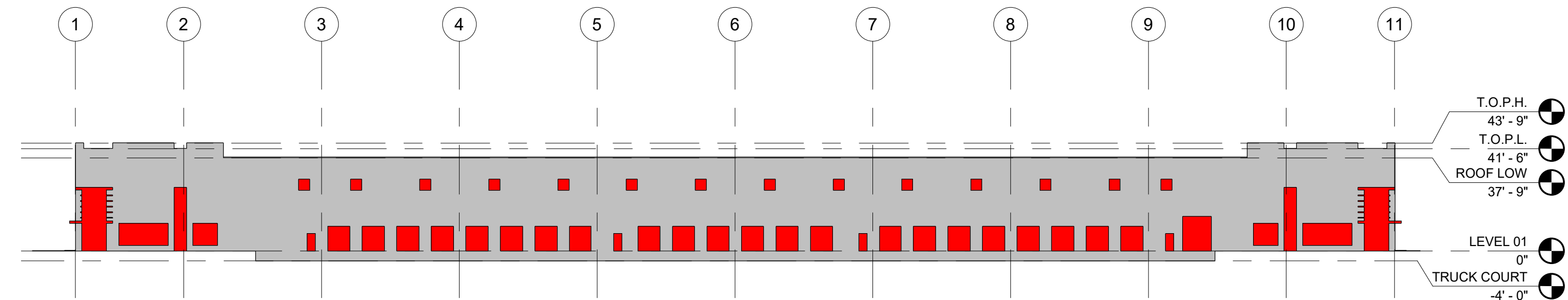
NORTH ELEVATION- MATERIALS

SCALE: 1" = 40'-0"



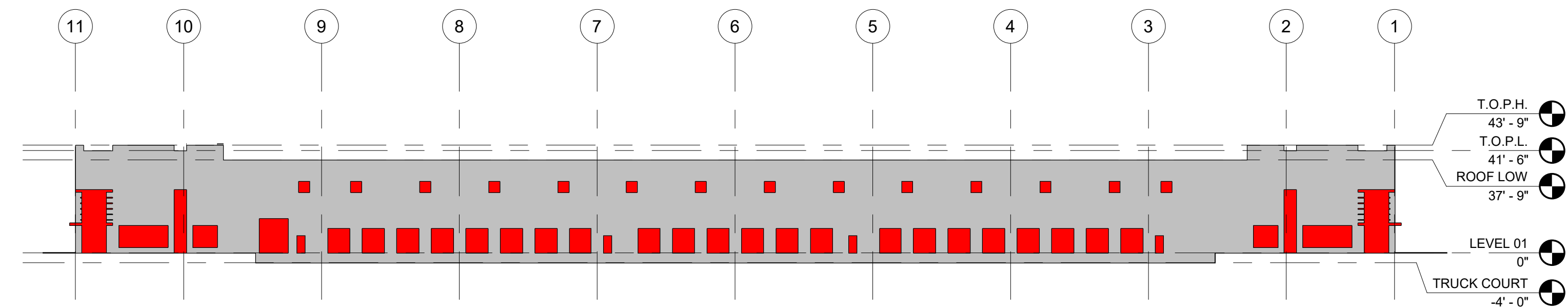
SOUTH ELEVATION- MATERIALS

SCALE: 1" = 40'-0"



EAST ELEVATION- MATERIALS

SCALE: 1" = 40'-0"



WEST ELEVATION- MATERIALS

SCALE: 1" = 40'-0"

NORTH FACADE:
TOTAL SURFACE AREA: 20,750 SF
TILT WALL (MASONRY-LIKE-MATERIAL): 16,594 SF (80.0%)
OTHER MATERIALS: 4,156 SF (20.0%)

SOUTH FACADE:
TOTAL SURFACE AREA: 20,750 SF
TILT WALL (MASONRY-LIKE-MATERIAL): 16,594 SF (80.0%)
OTHER MATERIALS: 4,156 SF (20.0%)

EAST FACADE:
TOTAL SURFACE AREA: 22,439 SF
TILT WALL (MASONRY-LIKE-MATERIAL): 18,564 SF (82.7%)
OTHER MATERIALS: 3,875 SF (17.3%)

WEST FACADE:
TOTAL SURFACE AREA: 22,439 SF
TILT WALL (MASONRY-LIKE-MATERIAL): 18,564 SF (82.7%)
OTHER MATERIALS: 3,875 SF (17.3%)

MASONRY-LIKE CONSTRUCTION MATERIALS –
MASONRY-LIKE CONSTRUCTION MATERIALS INCLUDE FIBER REINFORCED CEMENT EXTERIOR SIDING, STUCCO, EXTERIOR INSULATED FINISH SYSTEMS (E.I.F.S.), OR SIMILAR EXTERIOR CLADDING; AND CONCRETE TILT WALL, POUR-IN-PLACE CONCRETE WALL AND PRE-CAST WALL THAT ARE AT LEAST TWO (2) INCHES THICK AND THAT ARE PROFILED, SCULPTURED, FLUTED, EXPOSED-AGGREGATED OR HAVE OTHER NON-SMOOTH ARCHITECTURAL CONCRETE FINISH. ORD. NO. 1484, 5/10/04)

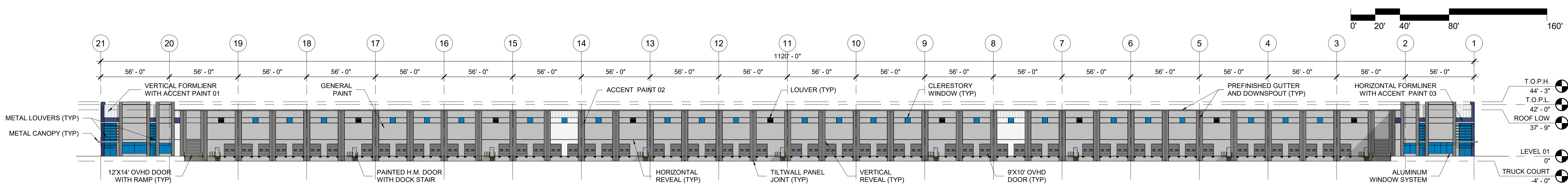
**MANSFIELD BUSINESS PARK- EXHIBIT C
ZC#21-009**

146.50 ACRES OF LAND LOCATED IN THE
V.M. STYLES SURVEY ABSTRACT NO. 791,
J.Q. WHEELER SURVEY, ABSTRACT NO. 903 &
S.M. KEMP SURVEY, ABSTRACT NO. 492
MANSFIELD, JOHNSON COUNTY, TEXAS
PREPARED MARCH 26, 2021 & JULY 24, 2006

BUILDING 4- OVERALL ELEVATIONS- EXHIBIT C

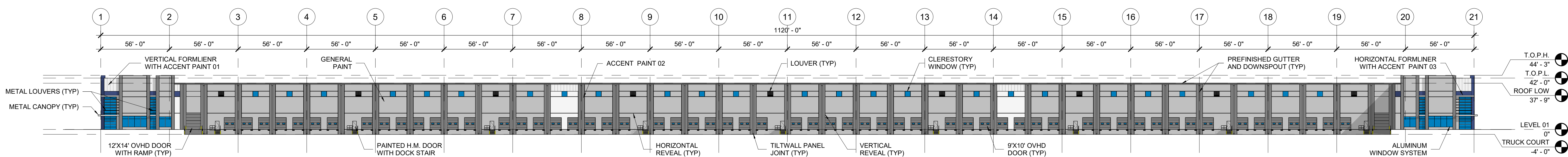
ELEVATIONS

SCALE: 1" = 40'-0"



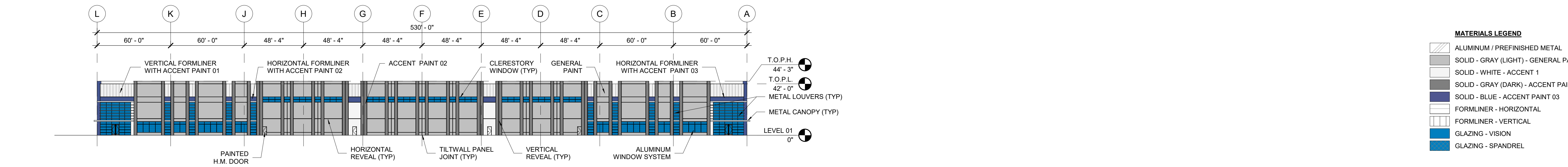
NORTH ELEVATION

SCALE: 1" = 40'-0"



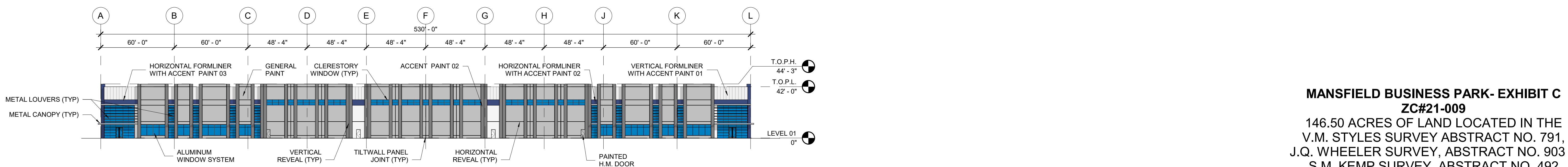
SOUTH ELEVATION

SCALE: 1" = 40'-0"



EAST ELEVATION

SCALE: 1" = 40'-0"



WEST ELEVATION

SCALE: 1" = 40'-0"

- MATERIALS LEGEND**
- ALUMINUM / PREFINISHED METAL
 - SOLID - GRAY (LIGHT) - GENERAL PAINT
 - SOLID - WHITE - ACCENT 1
 - SOLID - GRAY (DARK) - ACCENT PAINT 02
 - SOLID - BLUE - ACCENT PAINT 03
 - FORMLINER - HORIZONTAL
 - FORMLINER - VERTICAL
 - GLAZING - VISION
 - GLAZING - SPANDREL

**MANSFIELD BUSINESS PARK- EXHIBIT C
ZC#21-009**
146.50 ACRES OF LAND LOCATED IN THE
V.M. STYLES SURVEY ABSTRACT NO. 791,
J.Q. WHEELER SURVEY, ABSTRACT NO. 903 &
S.M. KEMP SURVEY, ABSTRACT NO. 492
MANSFIELD, JOHNSON COUNTY, TEXAS
PREPARED MARCH 26, 2021 & JULY 24, 2006

MANSFIELD BUSINESS PARK
A PROJECT FOR
STONELAKE CAPITAL PARTNERS

**powers
brown
archi
ecture**

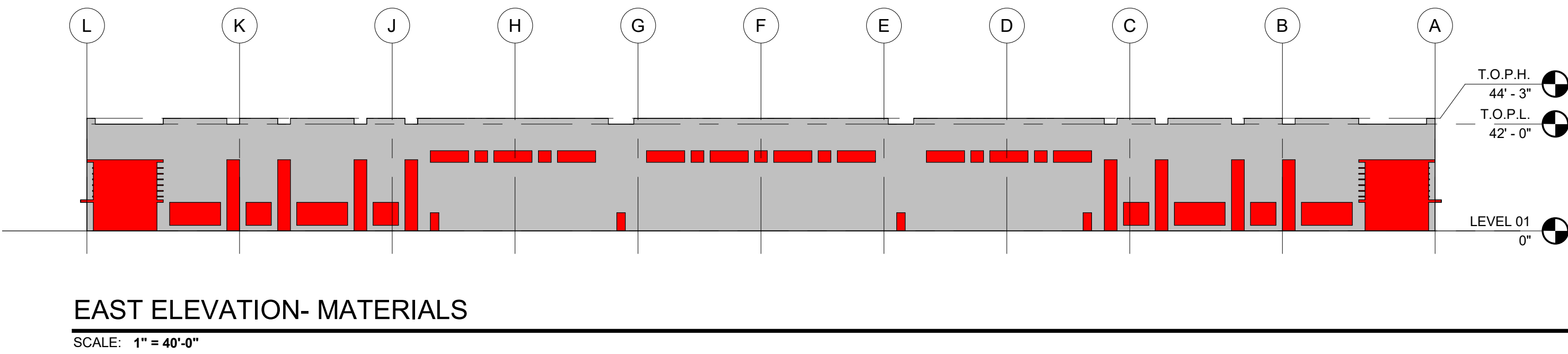
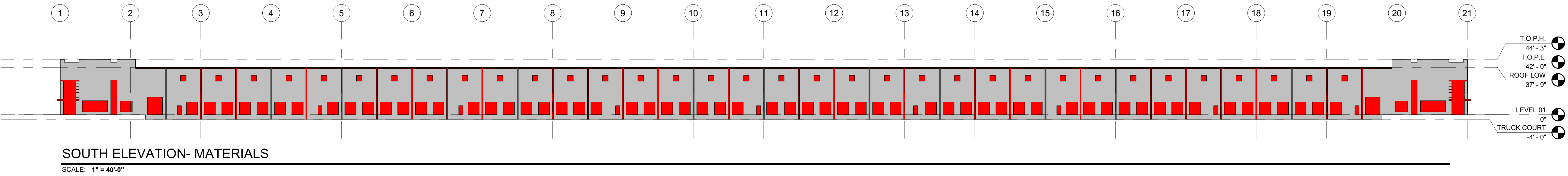
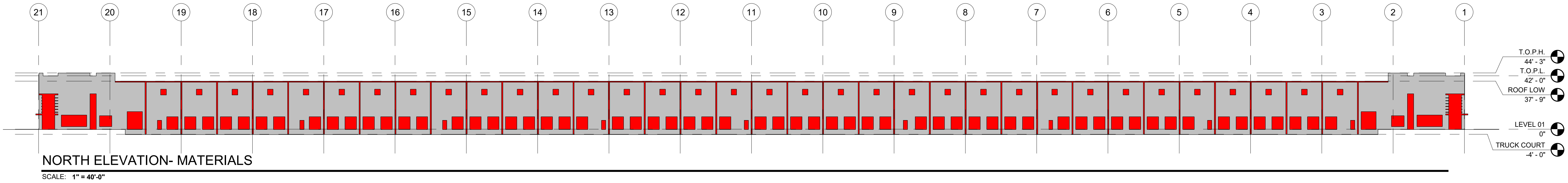
BUILDING 4- MATERIALS DIAGRAMS- EXHIBIT C

MATERIALS DIAGRAM

SCALE: 1" = 40'-0"



NORTH FACADE:
TOTAL SURFACE AREA: 46,924 SF
TILTWALL (MASONRY-LIKE-MATERIAL): 36,875 SF (78.6%)
OTHER MATERIALS: 10,049 SF (21.4%)

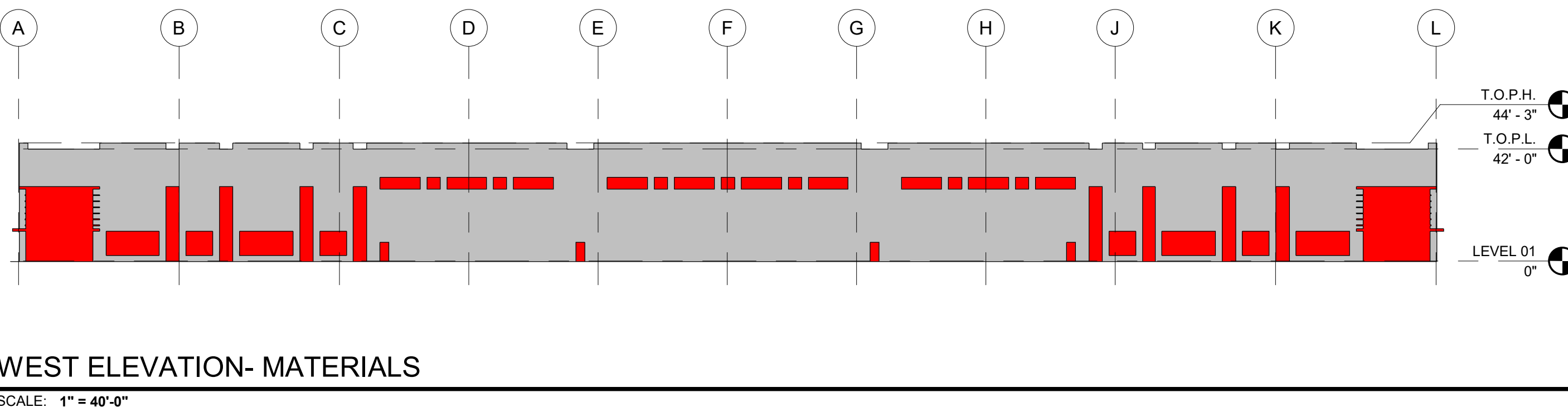


EAST FACADE:
TOTAL SURFACE AREA: 23,202 SF
TILTWALL (MASONRY-LIKE-MATERIAL): 18,638 SF (80.3%)
OTHER MATERIALS: 4,564 SF (19.7%)

SOUTH FACADE:
TOTAL SURFACE AREA: 46,924 SF
TILTWALL (MASONRY-LIKE-MATERIAL): 36,875 SF (78.6%)
OTHER MATERIALS: 10,049 SF (21.4%)

MASONRY-LIKE CONSTRUCTION MATERIALS –
MASONRY-LIKE CONSTRUCTION MATERIALS INCLUDE FIBER REINFORCED CEMENT EXTERIOR SIDING, STUCCO, EXTERIOR INSULATED FINISH SYSTEMS (E.I.F.S.), OR SIMILAR EXTERIOR CLADDING; AND CONCRETE TILT WALL, POUR-IN-PLACE CONCRETE WALL AND PRE-CAST WALL THAT ARE AT LEAST TWO (2) INCHES THICK AND THAT ARE PROFILED, SCULPTURED, FLUTED, EXPOSED-AGGREGATED OR HAVE OTHER NON-SMOOTH ARCHITECTURAL CONCRETE FINISH. ORD. NO. 1484, 5/10/04)

WEST FACADE:
TOTAL SURFACE AREA: 23,202 SF
TILTWALL (MASONRY-LIKE-MATERIAL): 18,638 SF (80.3%)
OTHER MATERIALS: 4,564 SF (19.7%)



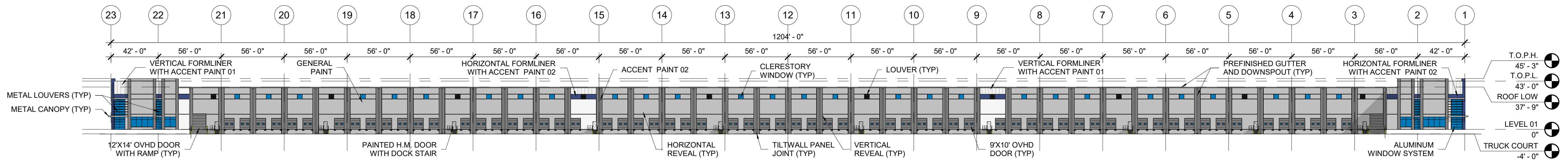
**MANSFIELD BUSINESS PARK- EXHIBIT C
ZC#21-009**

146.50 ACRES OF LAND LOCATED IN THE V.M. STYLES SURVEY ABSTRACT NO. 791, J.Q. WHEELER SURVEY, ABSTRACT NO. 903 & S.M. KEMP SURVEY, ABSTRACT NO. 492 MANSFIELD, JOHNSON COUNTY, TEXAS
PREPARED MARCH 26, 2021 & JULY 24, 2006

BUILDING 5- OVERALL ELEVATIONS- EXHIBIT C

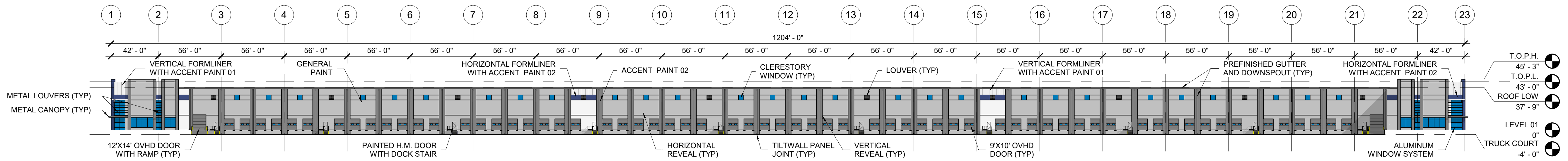
ELEVATIONS

SCALE: 1" = 50'-0"



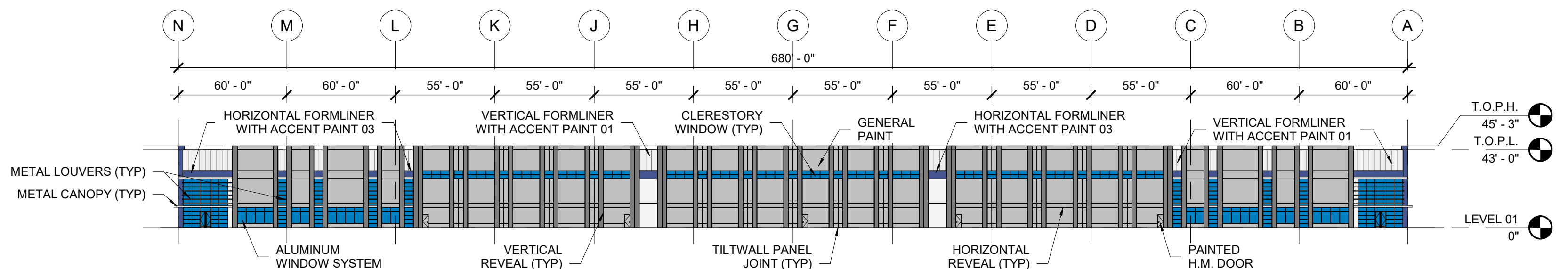
NORTH ELEVATION

SCALE: 1" = 50'-0"



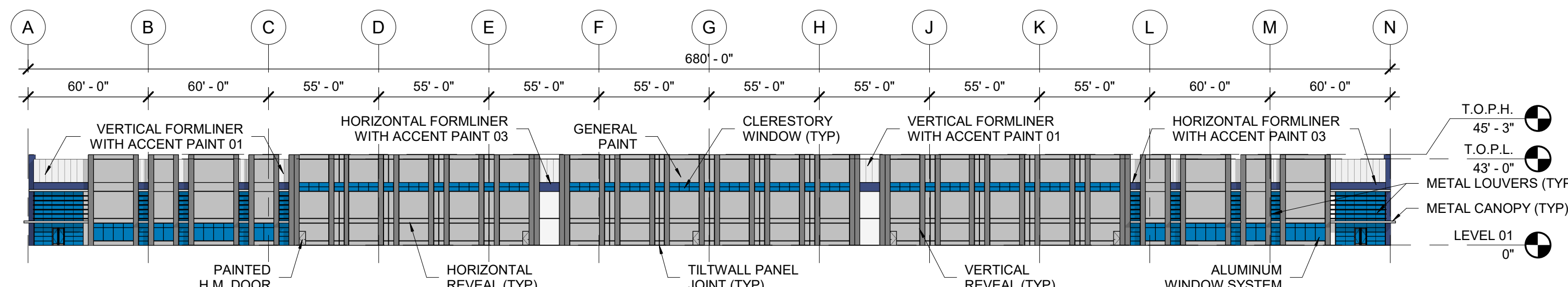
SOUTH ELEVATION

SCALE: 1" = 50'-0"



EAST ELEVATION

SCALE: 1" = 50'-0"



WEST ELEVATION

SCALE: 1" = 50'-0"

MANSFIELD BUSINESS PARK- EXHIBIT C
ZC#21-009

146.50 ACRES OF LAND LOCATED IN THE
V.M. STYLES SURVEY ABSTRACT NO. 791,
J.Q. WHEELER SURVEY, ABSTRACT NO. 903 &
S.M. KEMP SURVEY, ABSTRACT NO. 492
MANSFIELD, JOHNSON COUNTY, TEXAS
PREPARED MARCH 26, 2021 & JULY 24, 2006

MANSFIELD BUSINESS PARK
A PROJECT FOR
STONELAKE CAPITAL PARTNERS

HOUSTON

09/14/21

TEXAS

JT

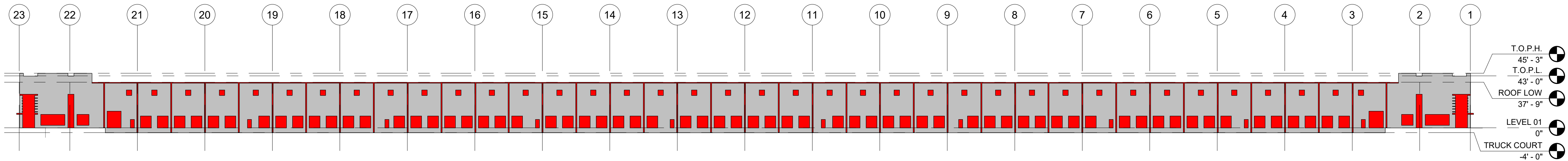
211057

powers
brown
archi
ecture

BUILDING 5- MATERIALS DIAGRAMS- EXHIBIT C

MATERIALS DIAGRAM

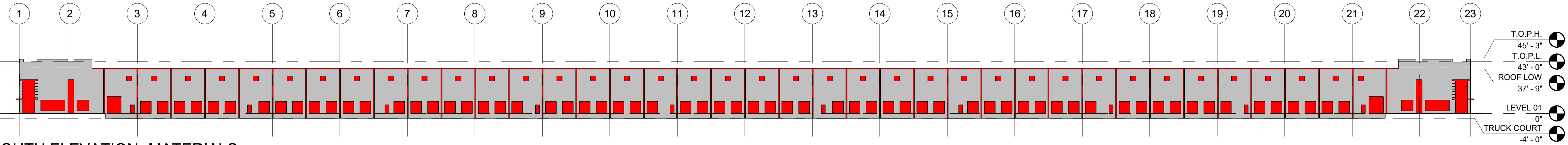
SCALE: 1" = 50'-0"



NORTH ELEVATION- MATERIALS

SCALE: 1" = 50'-0"

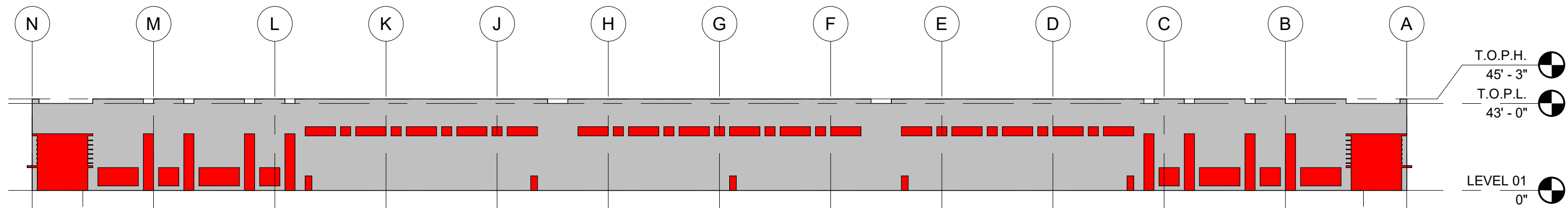
NORTH FACADE:
TOTAL SURFACE AREA: 50,529 SF
MASONRY MATERIALS: 39,704 SF (78.6%)
OTHER MATERIALS: 10,825 SF (21.4%)



SOUTH ELEVATION- MATERIALS

SCALE: 1" = 50'-0"

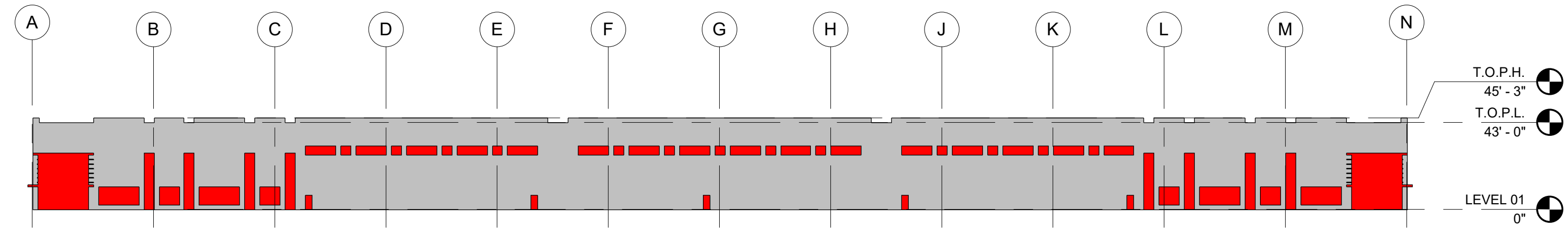
SOUTH FACADE:
TOTAL SURFACE AREA: 50,529 SF
MASONRY MATERIALS: 39,704 SF (78.6%)
OTHER MATERIALS: 10,825 SF (21.4%)



EAST ELEVATION- MATERIALS

SCALE: 1" = 50'-0"

EAST FACADE:
TOTAL SURFACE AREA: 30,520 SF
MASONRY MATERIALS: 25,392 SF (83.2%)
OTHER MATERIALS: 5,128 SF (16.8%)



WEST ELEVATION- MATERIALS

SCALE: 1" = 50'-0"

WEST FACADE:
TOTAL SURFACE AREA: 30,520 SF
MASONRY MATERIALS: 25,392 SF (83.2%)
OTHER MATERIALS: 5,128 SF (16.8%)

**MANSFIELD BUSINESS PARK- EXHIBIT C
ZC#21-009**

146.50 ACRES OF LAND LOCATED IN THE
V.M. STYLES SURVEY ABSTRACT NO. 791,
J.Q. WHEELER SURVEY, ABSTRACT NO. 903 &
S.M. KEMP SURVEY, ABSTRACT NO. 492
MANSFIELD, JOHNSON COUNTY, TEXAS
PREPARED MARCH 26, 2021 & JULY 24, 2006

BUILDING IMAGE- EXHIBIT C

CORNER ENTRY



**MANSFIELD BUSINESS PARK- EXHIBIT C
ZC#21-009**

146.50 ACRES OF LAND LOCATED IN THE
V.M. STYLES SURVEY ABSTRACT NO. 791,
J.Q. WHEELER SURVEY, ABSTRACT NO. 903 &
S.M. KEMP SURVEY, ABSTRACT NO. 492
MANSFIELD, JOHNSON COUNTY, TEXAS
PREPARED MARCH 26, 2021 & JULY 24, 2006

*RENDERING IS REPRESENTATIVE OF DESIGN INTENT ONLY. IT IS NOT A PHOTOREALISTIC REPRESENTATION OF ACTUAL MATERIALS PROPOSED AND SHOULD BE CONSIDERED PRELIMINARY AT ALL STAGES.

MANSFIELD BUSINESS PARK
A PROJECT FOR
STONELAKE CAPITAL PARTNERS

HOUSTON

09/14/21

TEXAS

JT

211057

powers
brown
archit
ecture