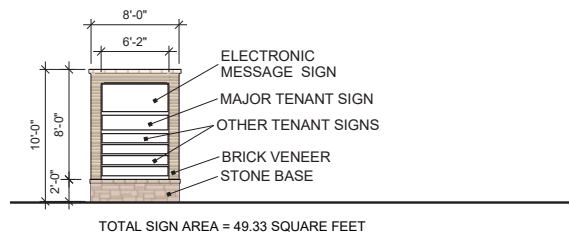
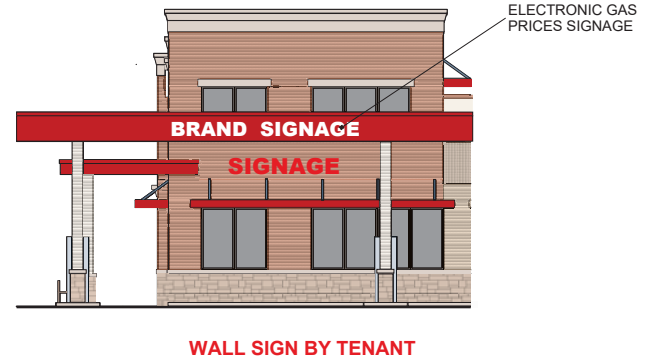


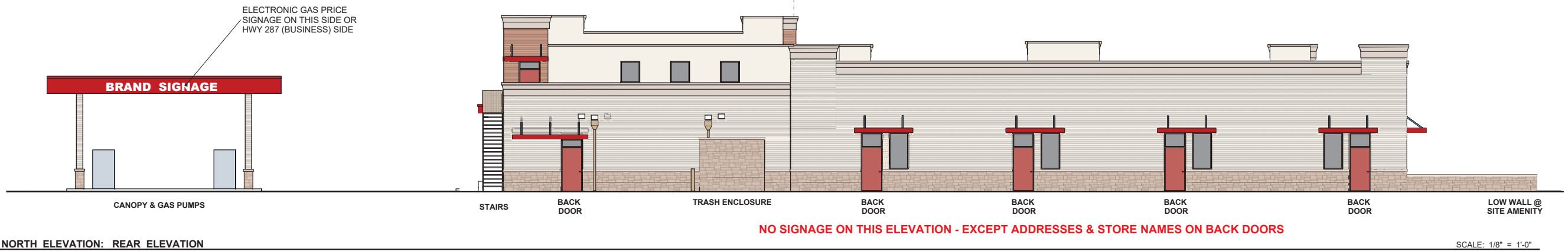
WEST ELEVATION: ELEVATION (GERTIE BARRETT ROAD SIDE) SCALE: 1/8" = 1'-0"



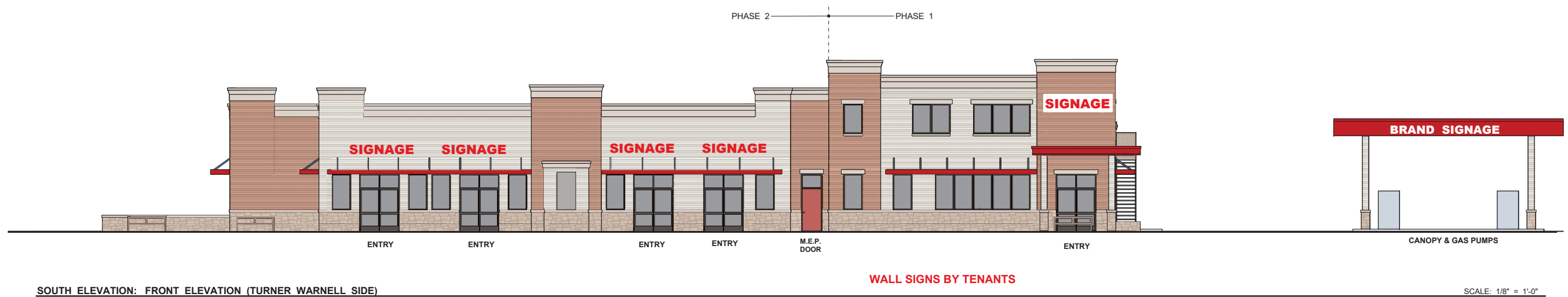
ELEVATION: MONUMENT SIGN SCALE: 1/8" = 1'-0"  
MONUMENT SIGN FACES HWY 287



ELEVATION: FROM Hwy 287 SCALE: 1/8" = 1'-0"



SCALE: 1/8" = 1'-0"



SCALE: 1/8" = 1'-0"